

CATALINA ESTATES

A REPLAT OF A PORTION OF SECTION 22, TOWNSHIP 44 SOUTH, RANGE 42 EAST CITY OF GREENACRES PALM BEACH COUNTY FLORIDA.

SHEET 2 OF 2

OCTOBER, 2019

THIS INSTRUMENT PREPARED BY ROBERT A. BUGGEE PROFESSIONAL SURVEYOR & MAPPER, #3302 STATE OF FLORIDA IN THE OFFICES OF "THE SURVEYOR" 233 EAST GATEWAY BOULEVARD BOYNTON BEACH, FLORIDA 33435 LICENSED BUSINESS #7890

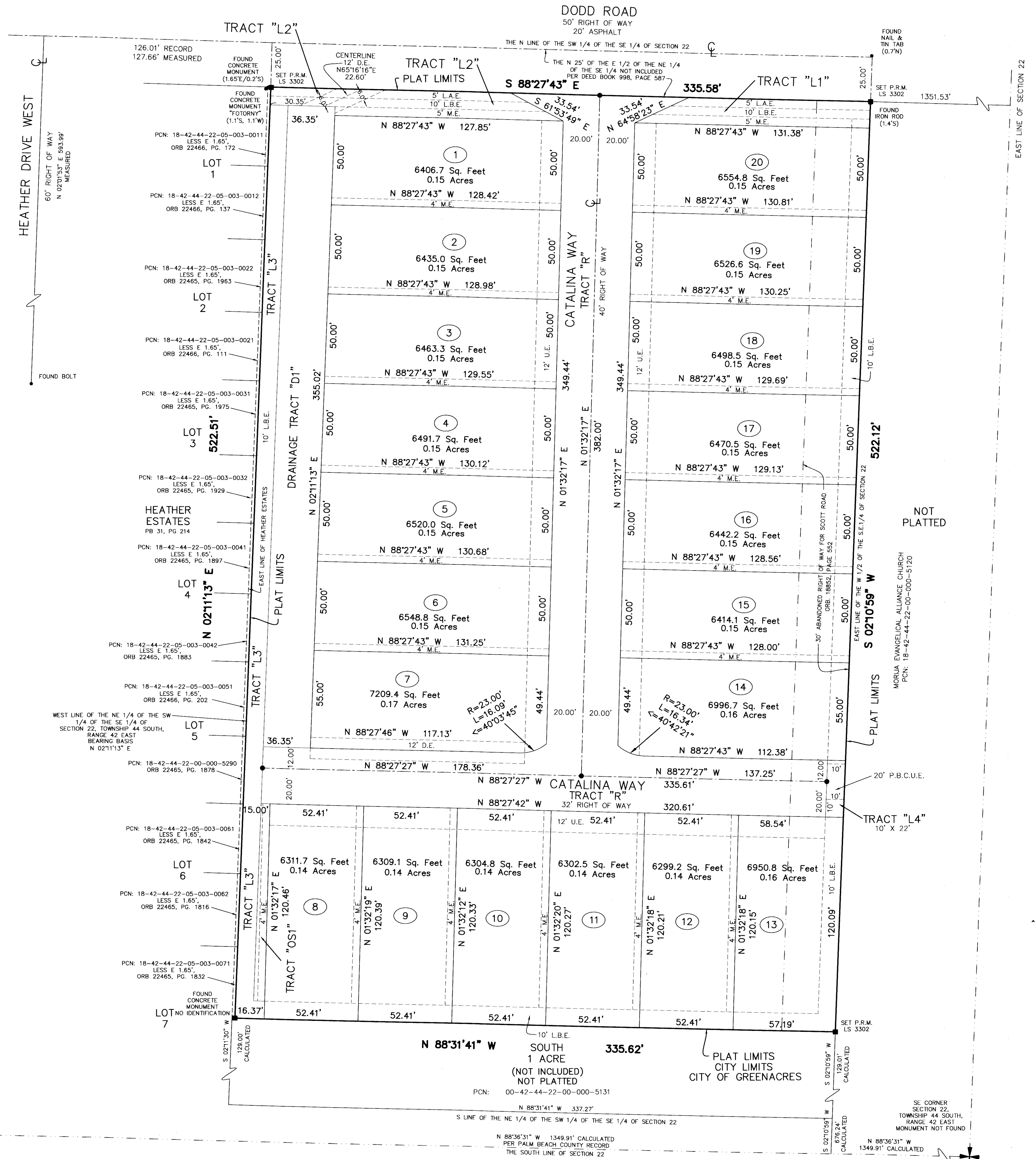
SURVEYOR'S NOTES

BEARINGS SHOWN HEREON ARE BASED ON THE WEST LINE OF THE NE 1/4 OF THE SW 1/4 OF SE 1/4 OF SECTION 22, TOWNSHIP 44 SOUTH, RANGE 42 EAST, WHICH BEARS N 02°11'13" E AND ALL OTHER BEARINGS ARE RELATIVE THERETO. ALL MEASUREMENTS ARE IN ACCORDANCE WITH THE UNITED STATES STANDARD, USING FEET AND DECIMAL PARTS THEREOF. ELEVATION ORIGIN: PALM BEACH COUNTY BRASS DISK ATOP CONCRETE MONUMENT "SILK OAK" AT SOUTHEAST CORNER OF THE INTERSECTION OF JOG ROAD & CANAL L-11, ELEV = 16.570' N.A.V.D. 88. PERMANENT REFERENCE MONUMENTS HAVE BEEN SET IN COMPLIANCE WITH CHAPTER 177, FLORIDA STATUTES, AS AMENDED. PERMANENT CONTROL POINTS WILL BE SET UNDER THE SUPERVISION OF THE SURVEYOR WITHIN ONE YEAR FROM THE DATE THE PLAT WAS RECORDED.

LEGEND

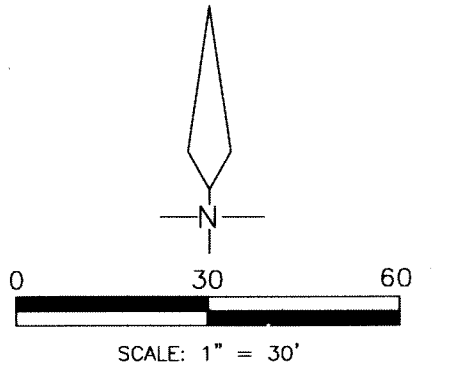
- P.R.M. = PERMANENT REFERENCE MONUMENT
- P.C.P. = PERMANENT CONTROL POINT
- = SET P.C.P. NAIL/DISK STAMPED 'LS 3302' UNLESS OTHERWISE NOTED
- = SET P.R.M. 4"x4" CONCRETE MONUMENT STAMPED 'LS 3302' UNLESS OTHERWISE NOTED
- R = RADIUS
- L = ARC LENGTH
- < = CENTRAL ANGLE
- ⊙ = CENTERLINE
- U.E. = UTILITY EASEMENT
- D.E. = DRAINAGE EASEMENT
- R/W = RIGHT OF WAY
- ORB = OFFICIAL RECORD BOOK
- PB = PLAT BOOK
- L.B.E. = LANDSCAPE BUFFER EASEMENT
- P.B.C.U.E. = PALM BEACH COUNTY UTILITY EASEMENT
- M.E. = MAINTENANCE EASEMENT
- SQ. FT = SQUARE FEET
- PCN = PROPERTY CONTROL NUMBER
- L.A.E. = LIMITED ACCESS EASEMENT

19 = LOT NUMBER



87

STATE OF FLORIDA
COUNTY OF PALM BEACH
THIS PLAT WAS FILED FOR
RECORD AT _____ M., THIS
DAY OF _____
2019, AND DULY RECORDED IN
PLAT BOOK NO. _____ ON
PAGE _____
SHARON R. BOCK
CLERK AND COMPTROLLER
BY: _____ D.C.



NOT PLATTED

MORUA EVANGELICAL ALLIANCE CHURCH
PCN: 18-42-44-22-00-000-5120

20' P.B.C.U.E.

TRACT "L4"
10' X 22'

SE CORNER
SECTION 22
TOWNSHIP 44 SOUTH,
RANGE 42 EAST
MONUMENT NOT FOUND

PCN: 00-42-44-22-00-000-5131
SOUTH 1 ACRE
(NOT INCLUDED)
NOT PLATTED

N 88°36'31" W 1349.91' CALCULATED
PER PALM BEACH COUNTY RECORD
THE SOUTH LINE OF SECTION 22

SE CORNER
SECTION 22
TOWNSHIP 44 SOUTH,
RANGE 42 EAST
MONUMENT NOT FOUND