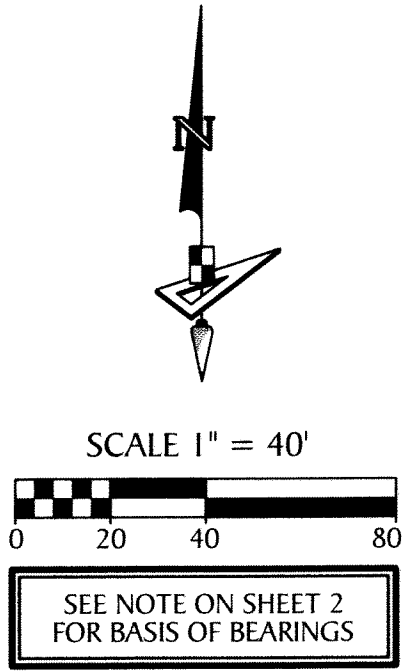


# MEADOWS OF WESTLAKE - PHASE II

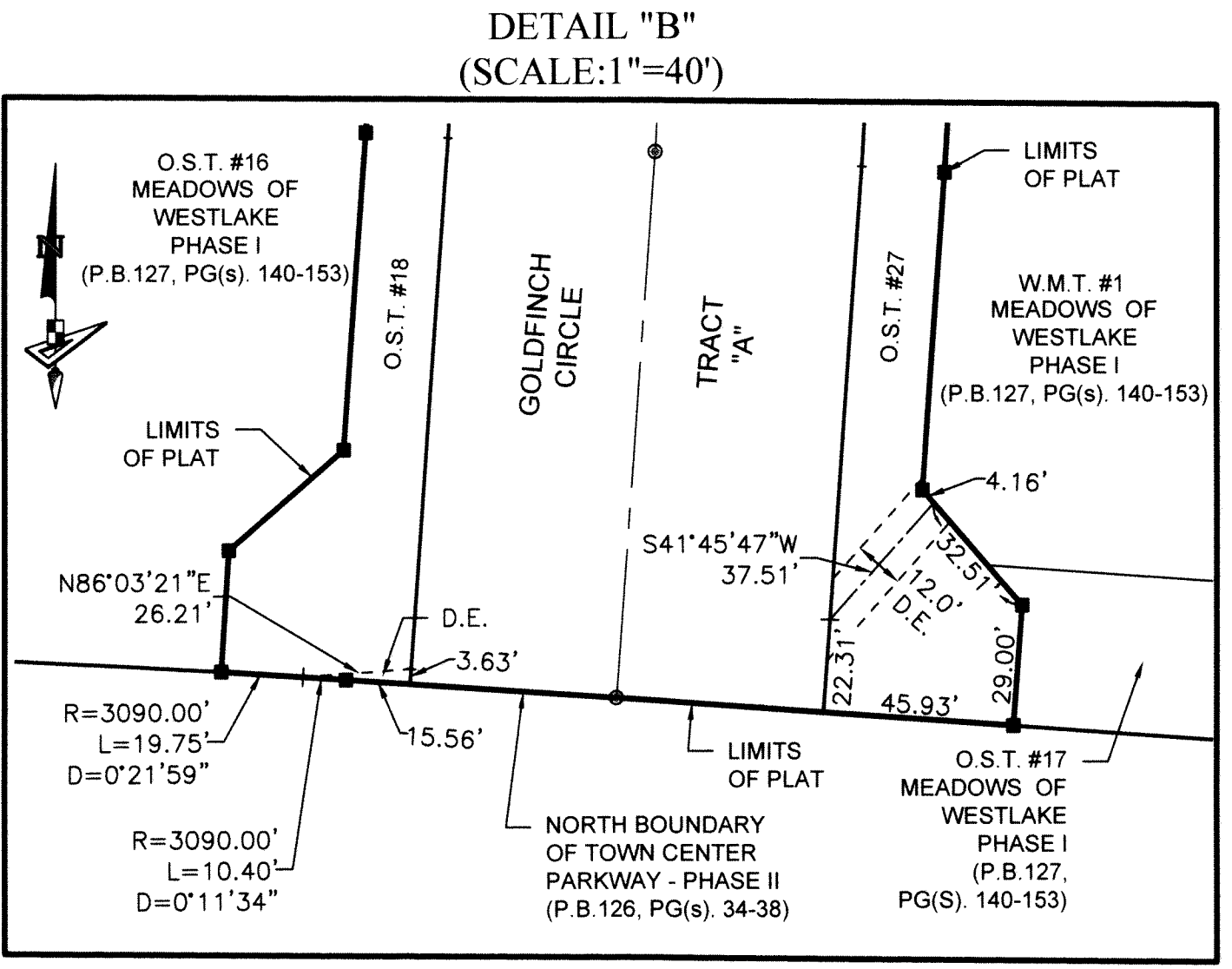
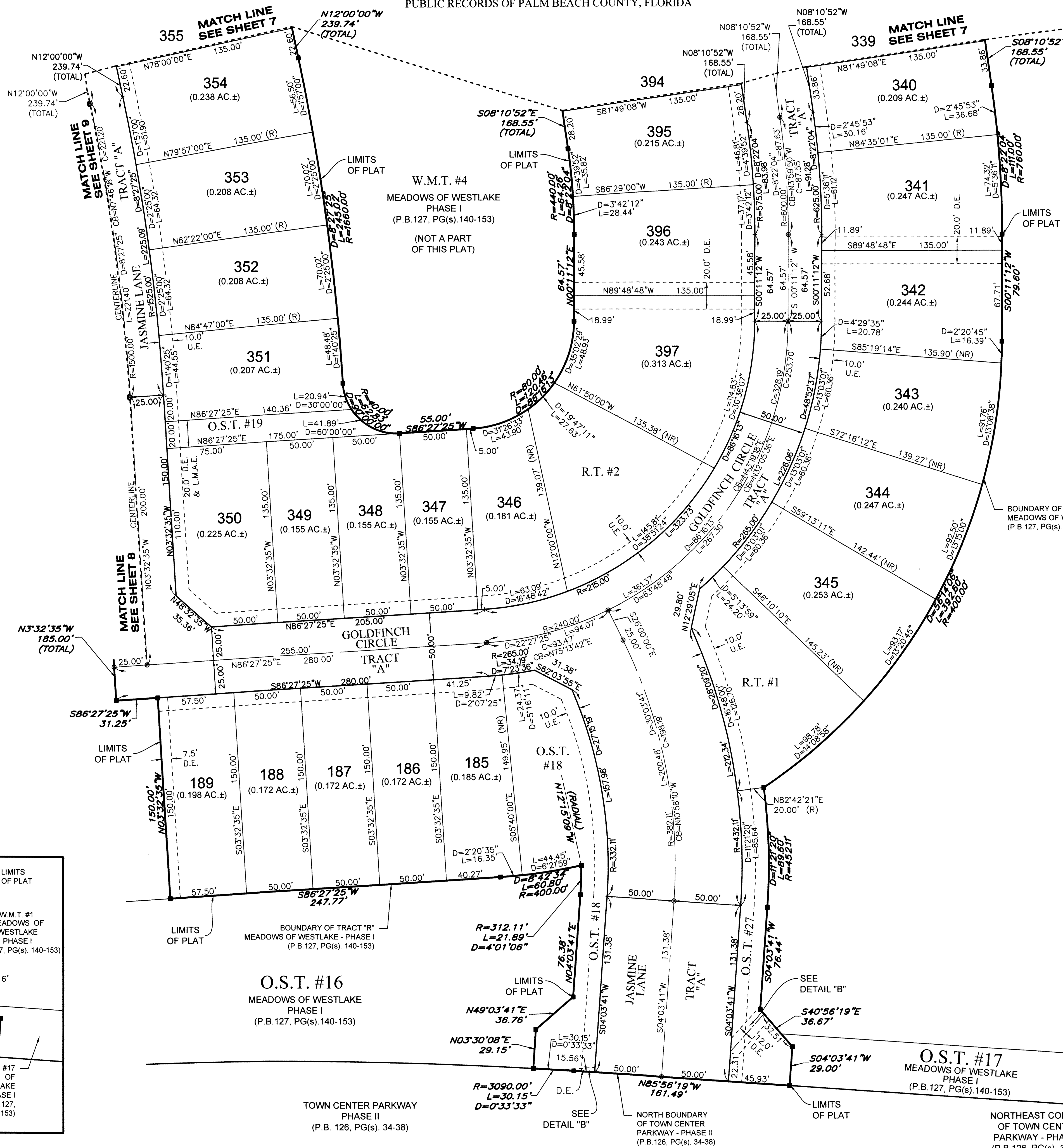
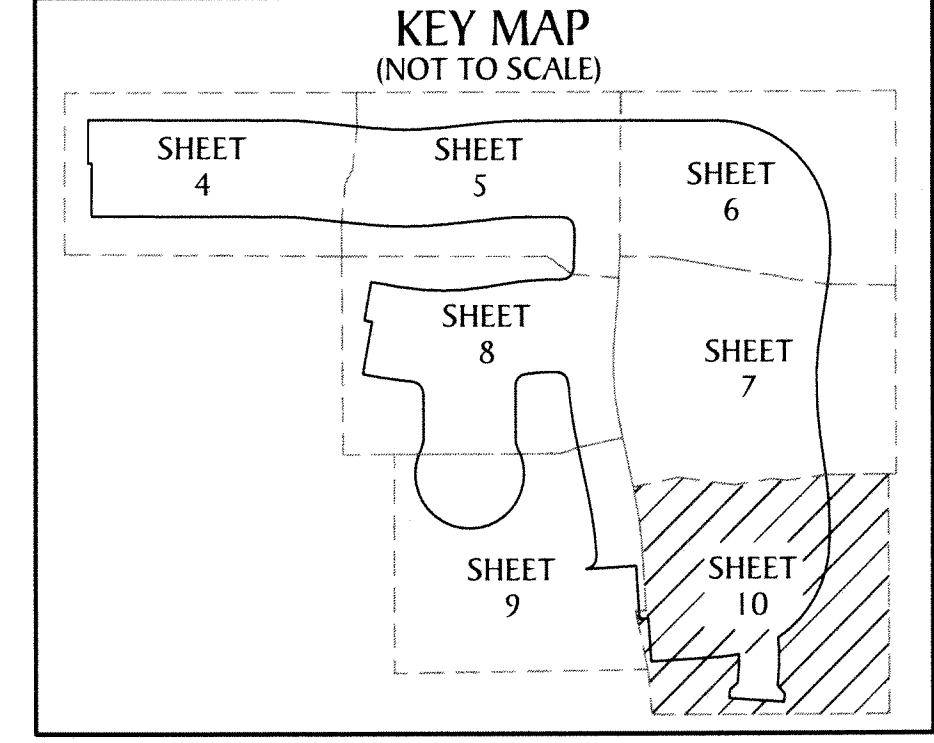
A SUBDIVISION IN SECTION 6, TOWNSHIP 43 SOUTH, RANGE 41 EAST,  
CITY OF WESTLAKE, PALM BEACH COUNTY, FLORIDA, BEING A REPLAT  
OF TRACT R AND OPEN SPACE TRACT #10 THROUGH OPEN SPACE TRACT #14 INCLUSIVE,  
MEADOWS OF WESTLAKE - PHASE I, PLAT BOOK 127, PAGES 140 THROUGH 153,  
PUBLIC RECORDS OF PALM BEACH COUNTY, FLORIDA

# 106



### LEGEND

- P.O.B. ----- POINT OF BEGINNING
- P.O.C. ----- POINT OF COMMENCEMENT
- P.B. ----- PLAT BOOK
- D.B. ----- DEED BOOK
- PG./PG(s) ----- PAGE(S)
- NAD ----- NORTH AMERICAN DATUM
- W.M.T. ----- WATER MANAGEMENT TRACT
- O.S.T. ----- OPEN SPACE TRACT
- R.T. ----- RECREATION TRACT
- P.B.C. ----- PALM BEACH COUNTY
- U.E. ----- UTILITY EASEMENT
- D.E. ----- DRAINAGE EASEMENT
- L.M.A.E. ----- LAKE MAINTENANCE ACCESS EASEMENT
- 6-43-41 ----- SECTION-TOWNSHIP-RANGE
- R ----- RADIUS
- L ----- ARC LENGTH
- D ----- DELTA ANGLE
- CB ----- CHORD BEARING
- C ----- CHORD
- R/W ----- RIGHT-OF-WAY
- (R) ----- RADIAL
- (NR) ----- NON-RADIAL
- PRM ----- PERMANENT REFERENCE MONUMENT
- ----- PERMANENT CONTROL POINT
- ----- FOUND PERMANENT REFERENCE MONUMENT
- ----- SET 4"x4" CONCRETE MONUMENT WITH 2" ALUMINUM DISK STAMPED "PRM LB 7768"



**W.M.T. #1**  
MEADOWS OF WESTLAKE  
PHASE I  
(P.B. 127 PG(S) 140-153)



1512 W. Blue Heron Blvd.  
Suite 105  
Riviera Beach, FL 33404  
Phone: (561) 444-2720  
www.geopointsurveying.com  
Licensed Business Number LB 7768