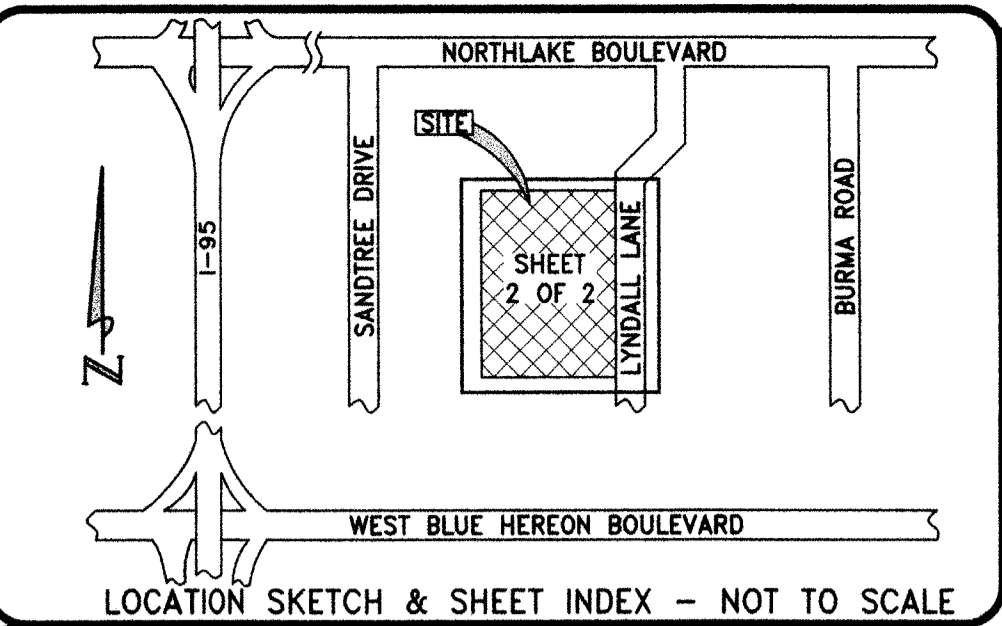


SUNSPIRE HEALTH, TYPE 3 CLF PLAT TWO

BEING A REPLAT OF TRACT A, SUNSPIRE HEALTH, TYPE 3 CLF, PLAT BOOK 125, PAGES 126 THROUGH 129, INCLUSIVE, PUBLIC RECORDS, PALM BEACH COUNTY, FLORIDA, TOGETHER WITH A PARCEL OF LAND LYING IN THE NORTHEAST QUARTER (NE 1/4) OF THE NORTHWEST QUARTER (NW 1/4) OF SECTION 19, TOWNSHIP 42 SOUTH, RANGE 43 EAST, PALM BEACH COUNTY, FLORIDA

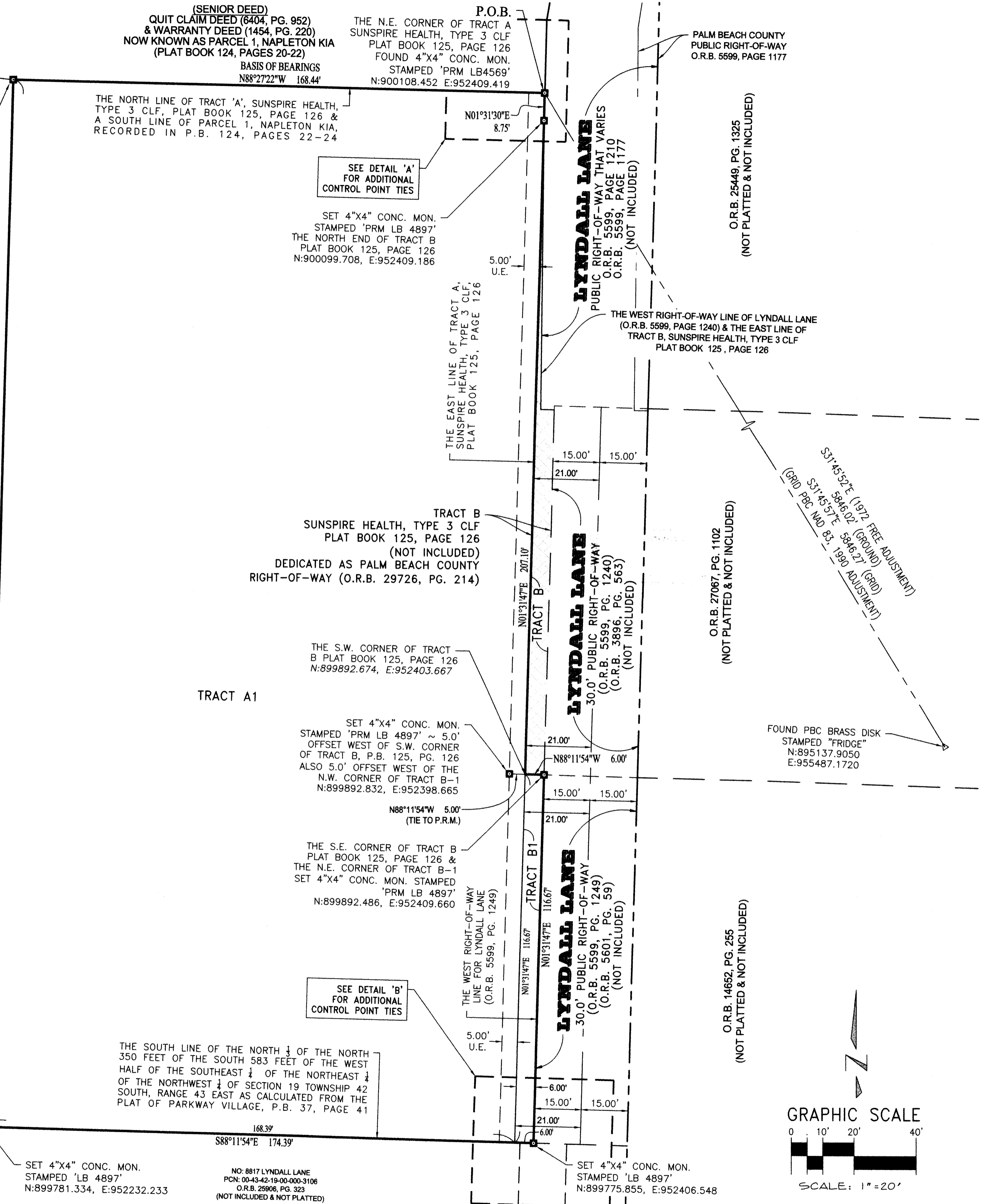
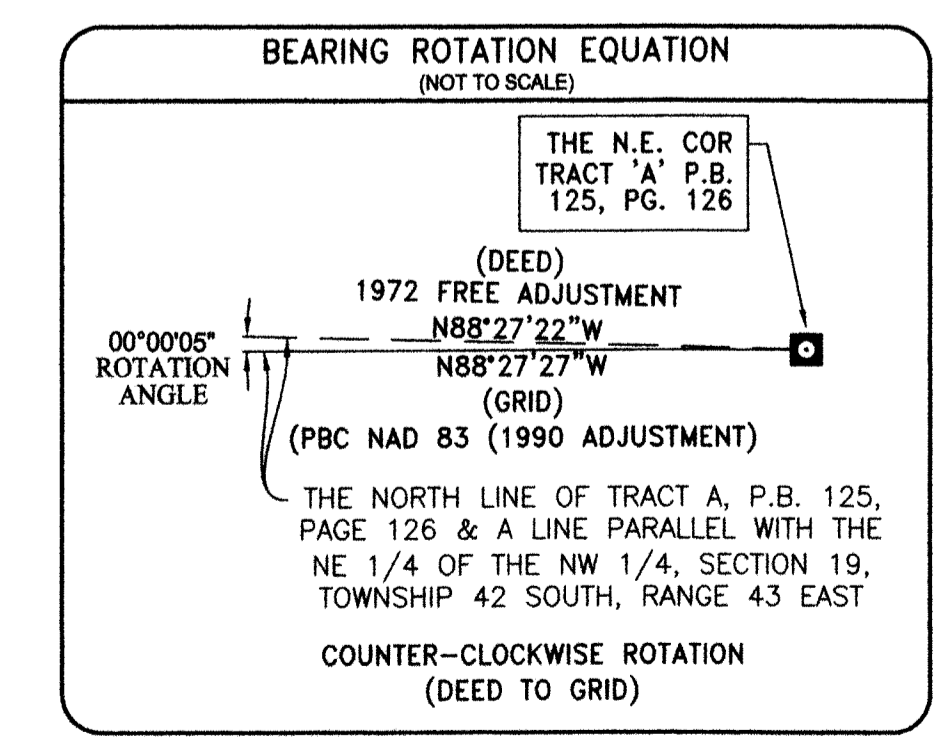
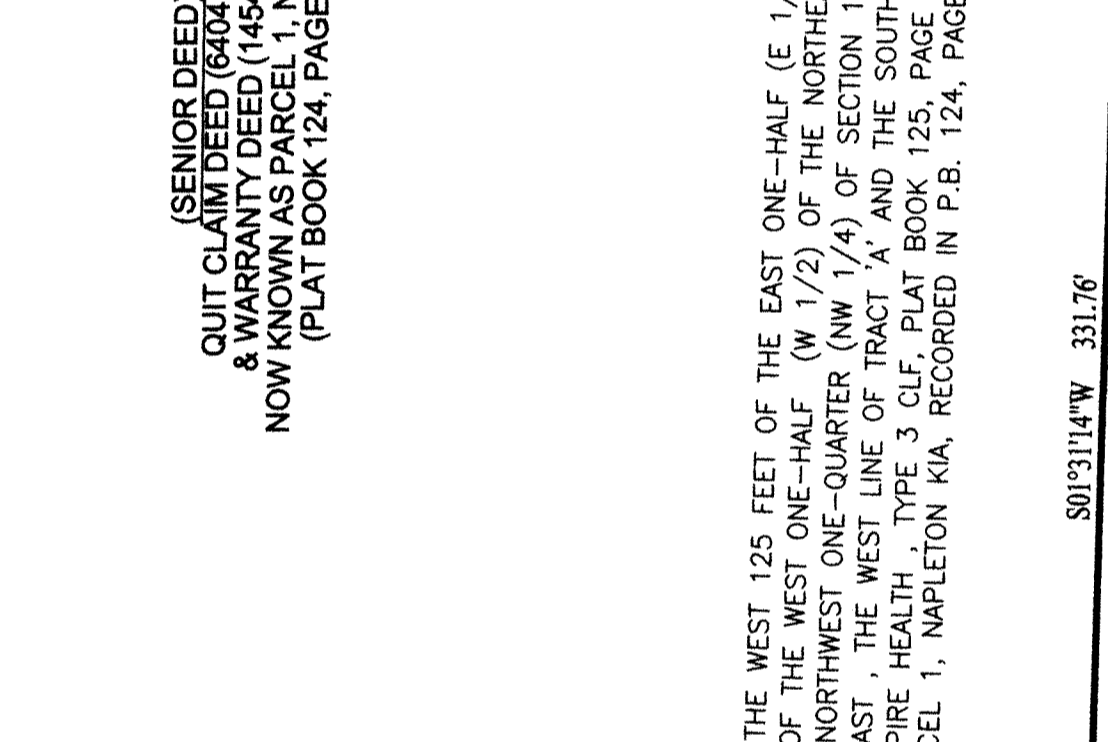
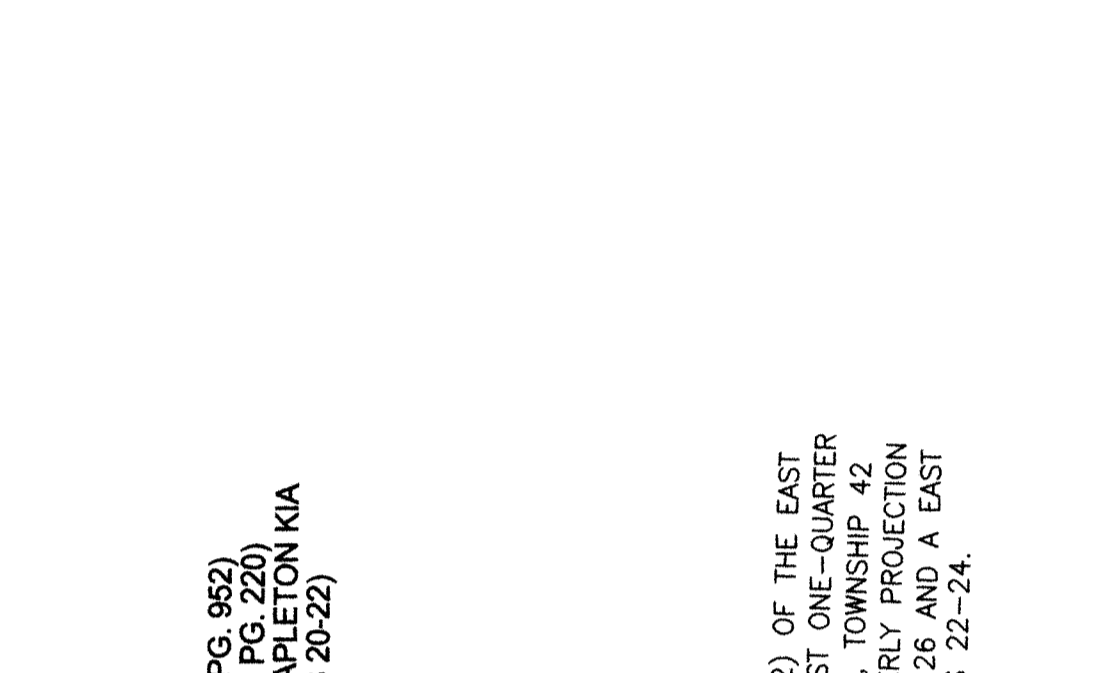
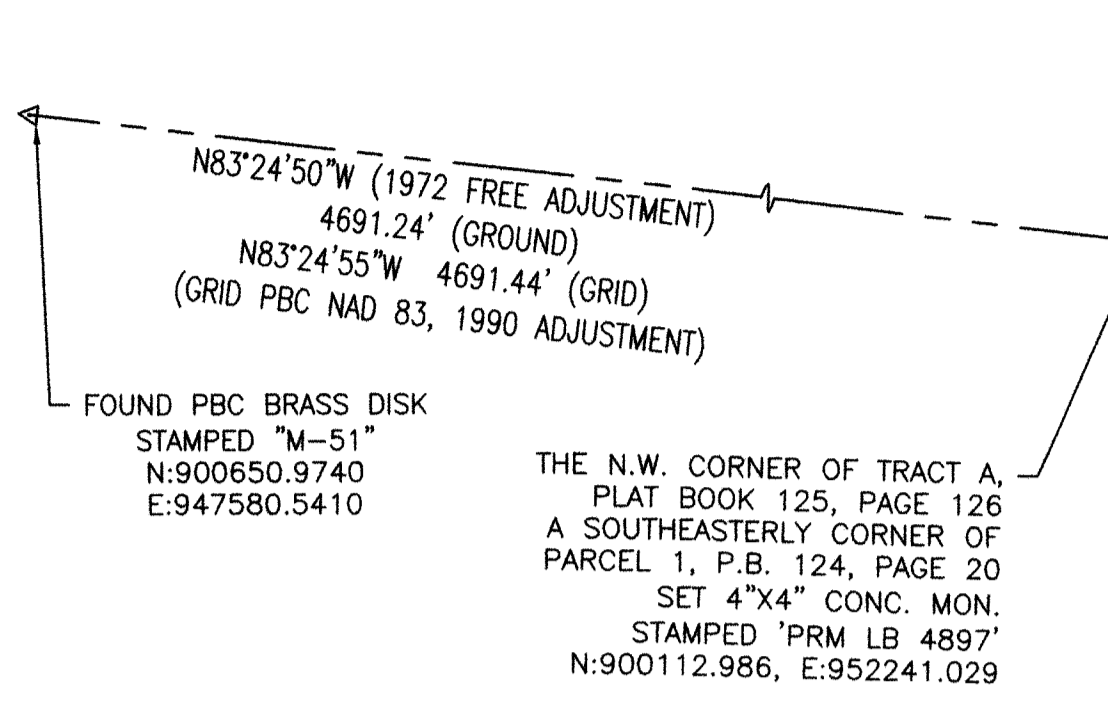
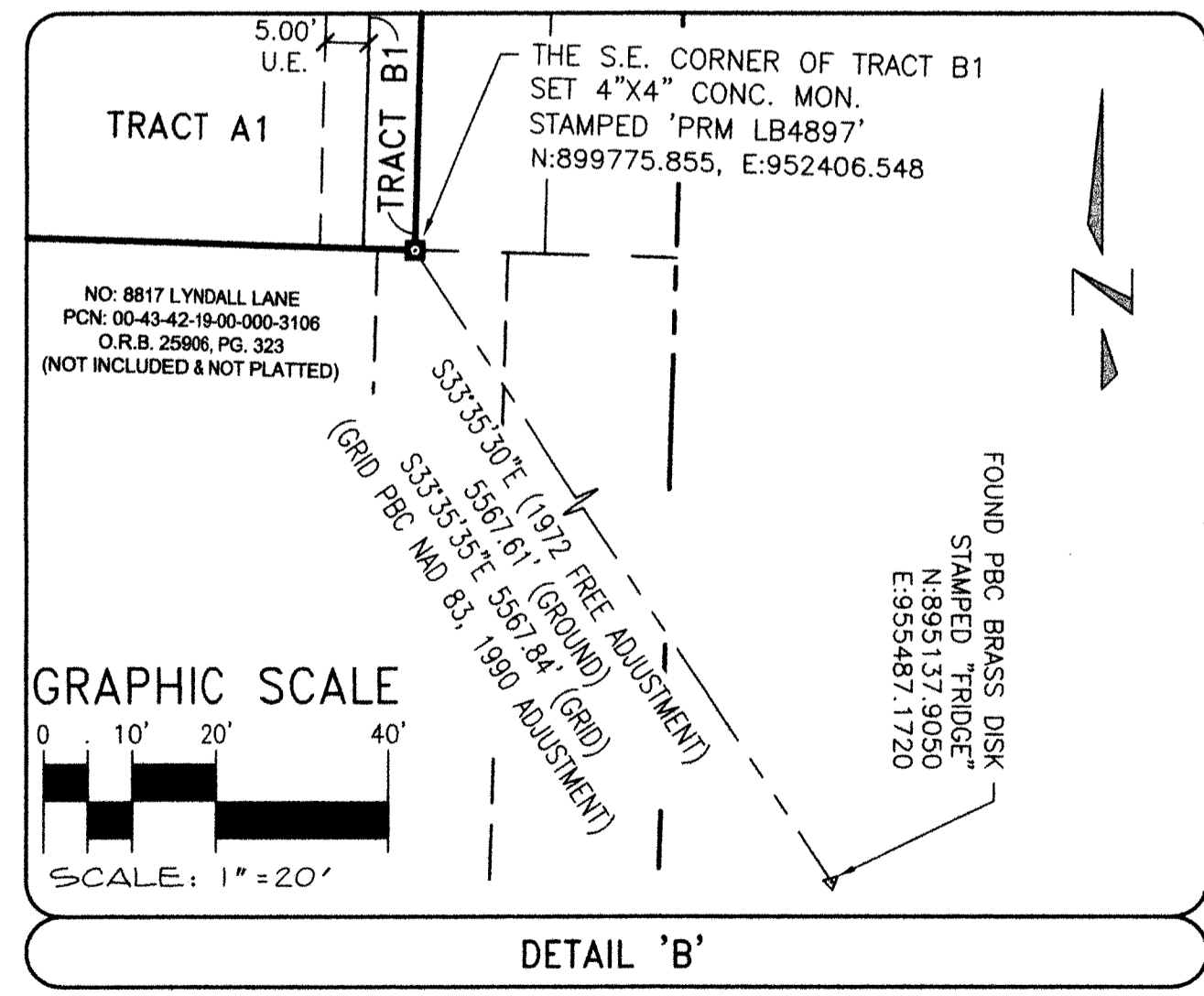
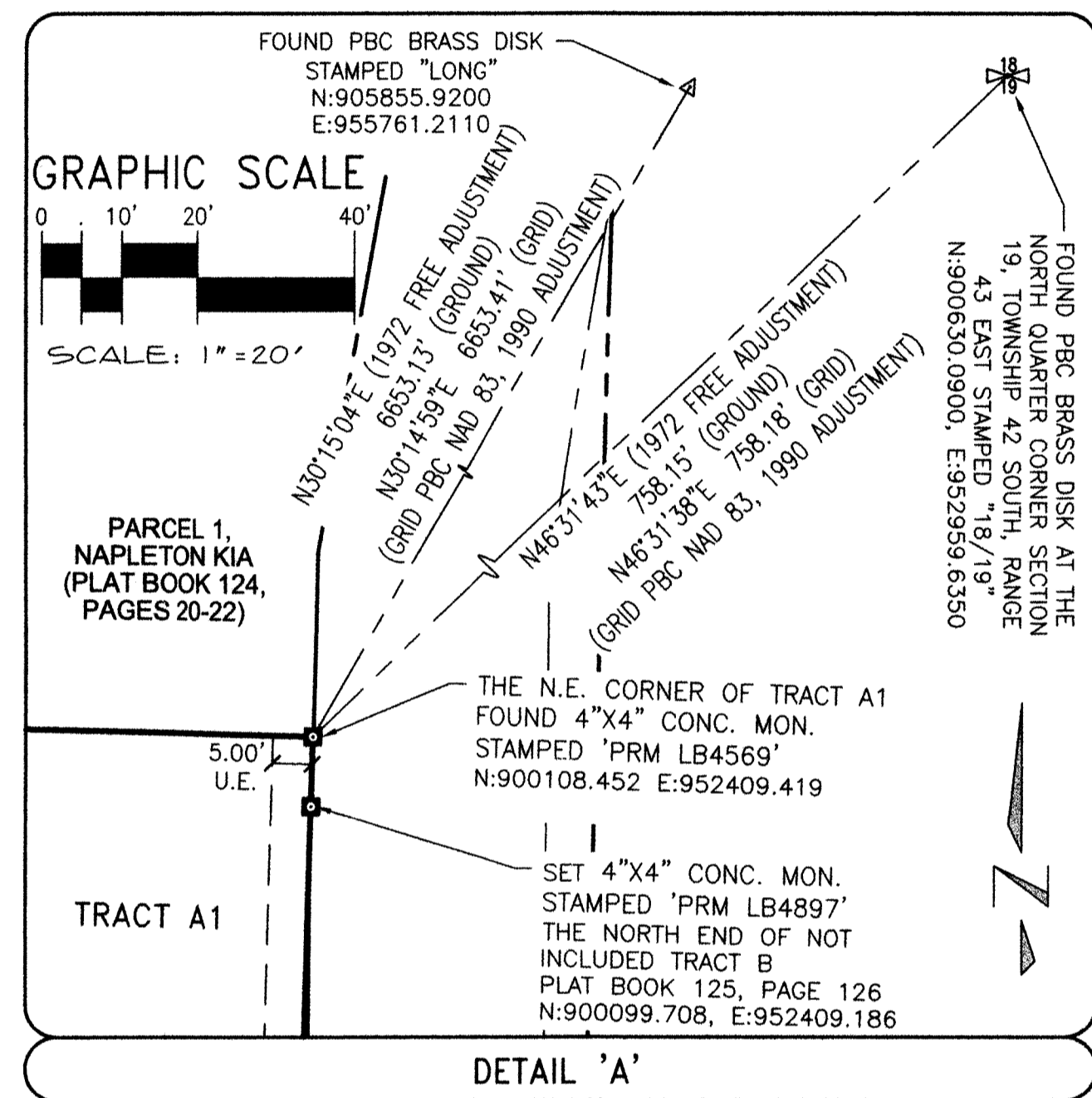
112

SHEET 2 OF 2



NOTES, COORDINATES, BEARINGS AND DISTANCES:

COORDINATES SHOWN ARE GRID DATUM = NAD 83 1990 ADJUSTMENT
 ZONE = FLORIDA EAST
 LINEAR UNIT = US SURVEY FEET
 COORDINATE SYSTEM 1983 STATE PLANE
 TRANSVERSE MERCATOR PROJECTION
 ALL DISTANCES ARE GROUND (UNLESS OTHERWISE NOTED)
 SCALE FACTOR = 1.000042169
 GROUND DISTANCE X SCALE FACTOR = GRID DISTANCE
 BEARINGS AS SHOWN HEREON ARE GRID
 (1972 PALM BEACH COUNTY FREE ADJUSTMENT)
 BEARING ROTATION EQUATION: 0°00'00" COUNTER CLOCKWISE ROTATION
 1972 PALM BEACH COUNTY FREE ADJUSTMENT TO NAD 1983/1990 ADJUSTMENT



LEGEND OF SYMBOLS:

- = 4"x4" CONCRETE MONUMENT STAMPED "P.R.M. LB4897" OR AS NOTED.
- △ = MAG NAIL & DISK STAMPED "P.R.M. LB 4897" OR AS NOTED.
- = A POINT REPRESENTING THE CHANGE IN DIRECTION FOR THE LINE FROM THE P.O.C. TO THE P.O.B.

PROPERTY CONTROL ABBREVIATIONS

- P.C.P. = PERMANENT CONTROL POINT
- PRM = PERMANENT REFERENCE MONUMENT
- CONC. = CONCRETE
- MON. = MONUMENT
- MND = MAG NAIL & DISK

LEGEND OF ABBREVIATIONS:

ARITHMETIC / ANNOTATION ABBREVIATIONS

- D = DEGREES
- M = MINUTES
- S = SECONDS
- R = RADIUS
- Δ = DELTA
- L = ARC LENGTH
- CB = CHORD BEARING
- P.C. = POINT OF CURVATURE
- P.T. = POINT OF TANGENCY
- P.R.C. = POINT OF REVERSE CURVE
- RAD. = RADIAL
- N.R. = NON-RADIAL
- T = TANGENT
- N.T. = NON-TANGENT
- C/L = CENTERLINE
- P.B. = PLAT BOOK
- D.B. = DEED BOOK
- O.R.B. = OFFICIAL RECORD BOOK

EASEMENT / MISCELLANEOUS ABBREVIATIONS

- PG. = PAGE
- P.O.C. = POINT OF COMMENCEMENT
- P.O.B. = POINT OF BEGINNING
- P.O.T. = POINT OF TERMINUS
- W.L.E. = WATER LINE EASEMENT
- P.B.C.U.E. = PALM BEACH COUNTY UTILITY EASEMENT
- ING-EGRESS = INGRESS EGRESS EASEMENT
- L.W.D.D. = LAKE WORTH DRAINAGE DISTRICT
- PGC = PALM BEACH COUNTY
- R/W = RIGHT-OF-WAY

KESHAVARZ & ASSOCIATES
 Civil Engineers • Land Surveyors
 711 North Dixie Highway, Suite 201
 West Palm Beach, Florida 33401
 Tel: (561) 689-8600 Fax: (561) 689-7176

THIS INSTRUMENT WAS PREPARED BY SCOTT F. BRYSON, IN AND FOR THE OFFICES OF KESHAVARZ & ASSOCIATES, INC. 711 NORTH DIXIE HIGHWAY, SUITE 201, WEST PALM BEACH, FLORIDA 33401 TELEPHONE (561) 689-8600.

| | | | |
|----------------|--------------------|-------------|-----------|
| DATE: 05/24/18 | CHECKED: SB | PROJECT No. | SHEET No. |
| SCALE: 1"=20' | APPROVED: SB | 14-1056 | 2 OF 2 |
| DRAWN: SB | DTG No: D14-1056PA | | |