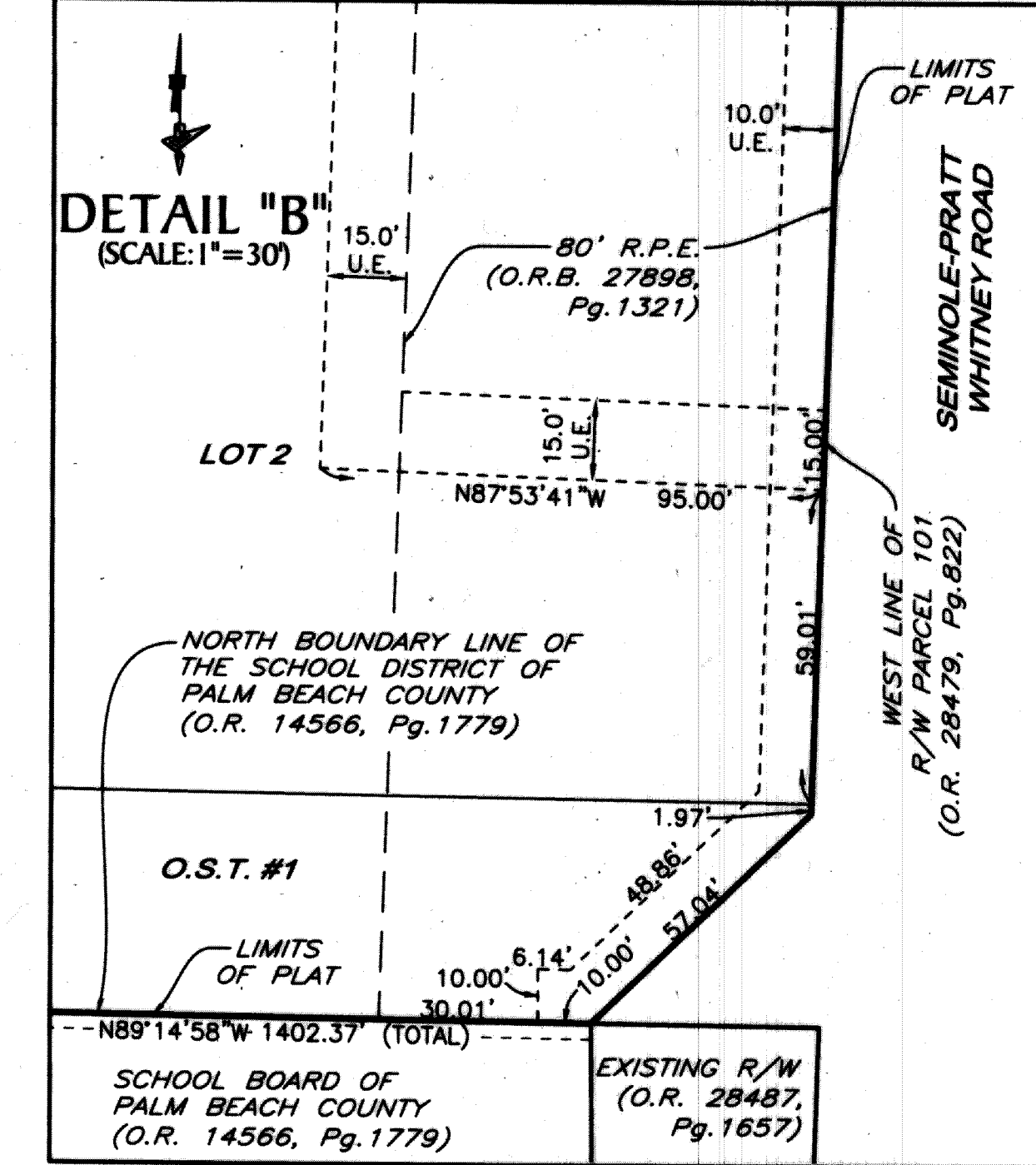
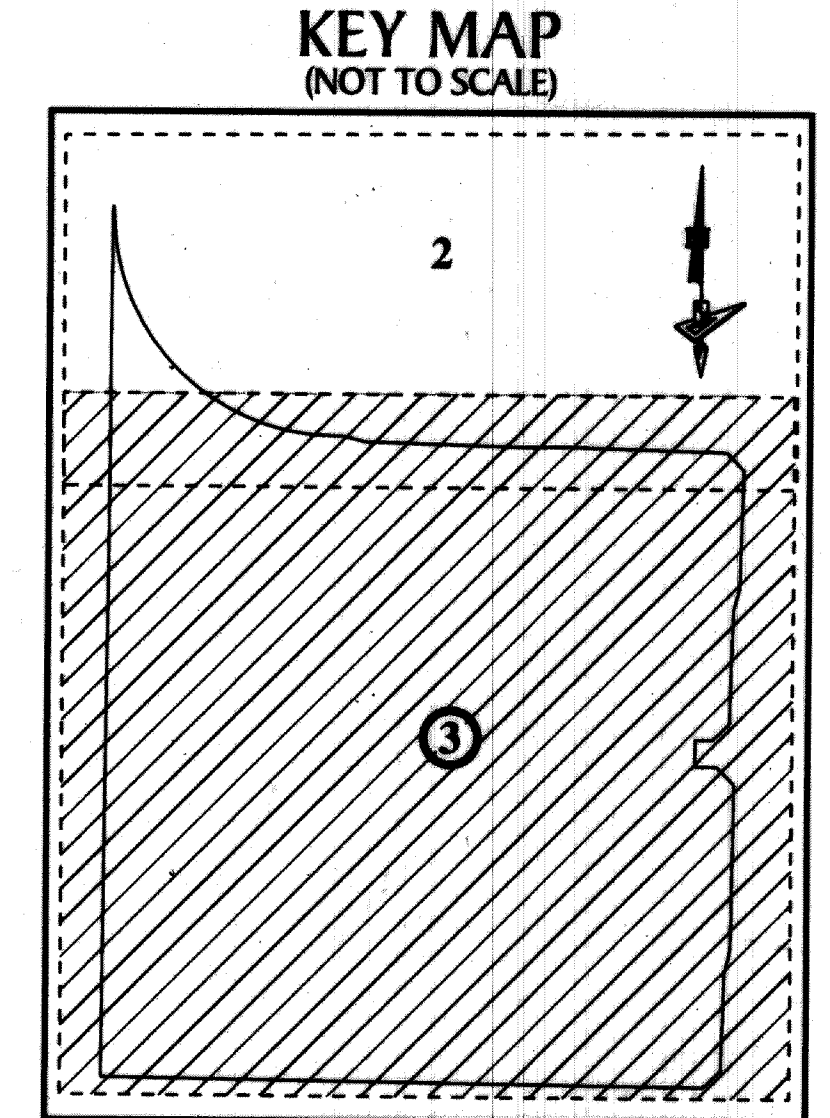
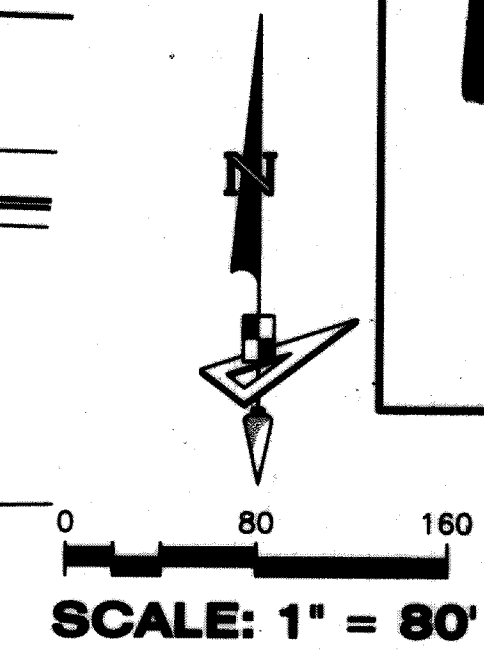
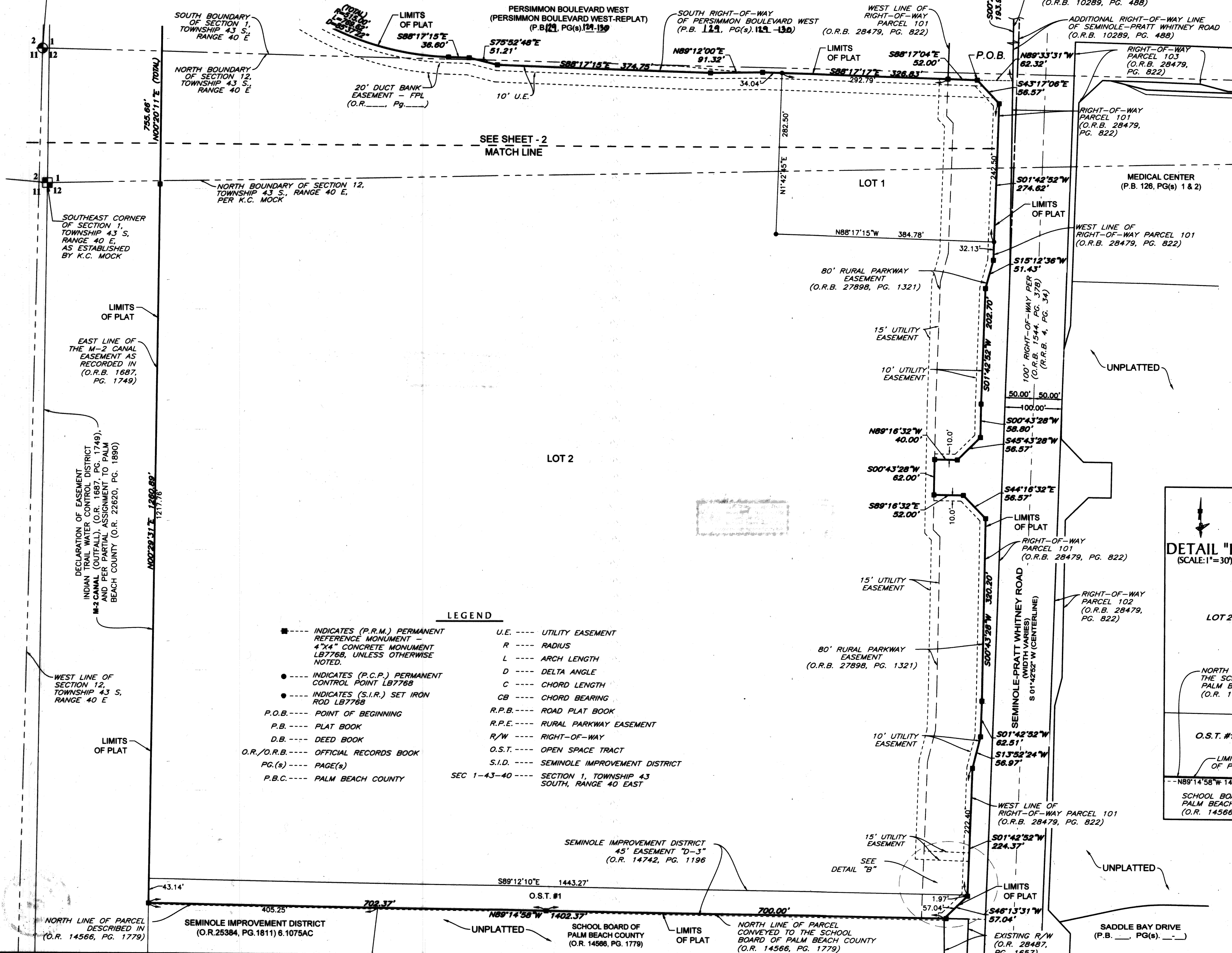


# WESTLAKE POD H

A SUBDIVISION BEING PORTIONS OF SECTIONS 1 AND 12, TOWNSHIP 43 SOUTH, RANGE 40 EAST, CITY OF WESTLAKE, PALM BEACH COUNTY, FLORIDA, BEING IN PART ALL OF TRACT M-1 AND TRACT M-2, AS SHOWN ON THE PLAT OF PERSIMMON BOULEVARD WEST - REPLAT, PLAT BOOK 121, PAGES 129 AND 130, PUBLIC RECORDS OF PALM BEACH COUNTY, FLORIDA

NORTHEAST CORNER OF SECTION 11, TOWNSHIP 43 S., RANGE 40 E SET 3.5" IRON PIPE "PUBLIC LAND SURVEY CORNER-TALLAHASSEE MERIDIAN" N: 879901.1924, E: 880403.6464 CERTIFIED CORNER RECORD #107586



**LEGEND**

<ul style="list-style-type: none"> <li>■ --- INDICATES (P.R.M.) PERMANENT REFERENCE MONUMENT - 4"x4" CONCRETE MONUMENT LB7768, UNLESS OTHERWISE NOTED.</li> <li>● --- INDICATES (P.C.P.) PERMANENT CONTROL POINT LB7768</li> <li>● --- INDICATES (S.I.R.) SET IRON ROD LB7768</li> <li>P.O.B. --- POINT OF BEGINNING</li> <li>P.B. --- PLAT BOOK</li> <li>D.B. --- DEED BOOK</li> <li>O.R./O.R.B. --- OFFICIAL RECORDS BOOK</li> <li>PG.(s) --- PAGE(S)</li> <li>P.B.C. --- PALM BEACH COUNTY</li> </ul>	<ul style="list-style-type: none"> <li>U.E. --- UTILITY EASEMENT</li> <li>R --- RADIUS</li> <li>L --- ARCH LENGTH</li> <li>D --- DELTA ANGLE</li> <li>C --- CHORD LENGTH</li> <li>CB --- CHORD BEARING</li> <li>R.P.B. --- ROAD PLAT BOOK</li> <li>R.P.E. --- RURAL PARKWAY EASEMENT</li> <li>R/W --- RIGHT-OF-WAY</li> <li>O.S.T. --- OPEN SPACE TRACT</li> <li>S.I.D. --- SEMINOLE IMPROVEMENT DISTRICT</li> <li>SEC 1-43-40 --- SECTION 1, TOWNSHIP 43 SOUTH, RANGE 40 EAST</li> </ul>
--	---

137