

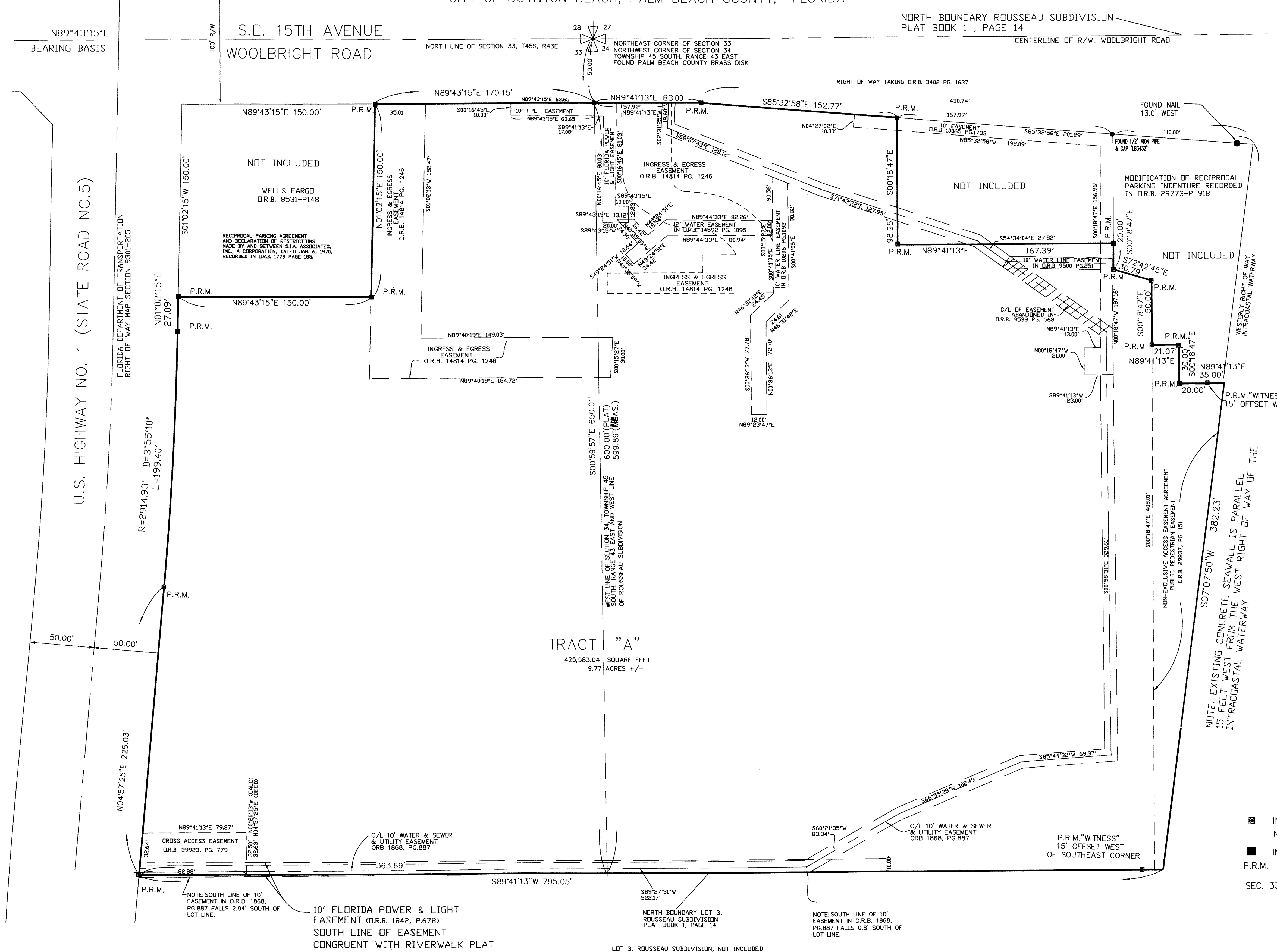
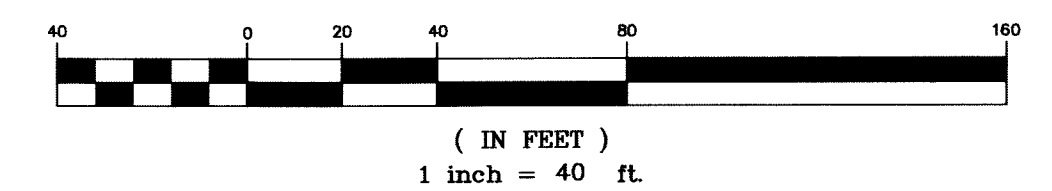
RIVERWALK PLAZA

BEING A REPLAT OF LOTS 1 & 2 OF ROUSSEAU'S SUBDIVISION AS RECORDED IN PLAT BOOK 1, PAGE 14 AND PART OF THE NORTH EAST QUARTER OF SECTION 33, TOWNSHIP 45 SOUTH, RANGE 43 EAST, PALM BEACH COUNTY, FLORIDA CITY OF BOYNTON BEACH, PALM BEACH COUNTY, FLORIDA

141

SHEET 2 OF 2

GRAPHIC SCALE



TIDAL WATERS
INTRACOASTAL WATERWAY
(ALSO KNOWN AS "FLORIDA EAST COAST CANAL"
RECORDED IN PLAT BOOK 17 PAGE 13A)

LEGEND

- ⊕ INDICATES CENTER LINE
- FND. INDICATES FOUND
- SEC. INDICATES SECTION
- Δ INDICATES DELTA
- R INDICATES RADIUS
- L INDICATES ARC LENGTH
- R.P.B. INDICATES ROAD PLAT BOOK
- PG. INDICATES PAGE
- PRM INDICATES PERMANENT REFERENCE MONUMENT
- R/W INDICATES RIGHT OF WAY
- O.R.B. INDICATES OFFICIAL RECORD BOOK
- MEAS. INDICATES MEASURED
- LB INDICATES LICENSED BUSINESS
- ⊙ INDICATES SET PERMANENT REFERENCE MONUMENT
NAIL & DISK LB#6936 SET IN PAVEMENT
- INDICATES SET PERMANENT REFERENCE MONUMENT
P.R.M. 4" x 4" x 24" CONCRETE MONUMENT WITH DISK-LB#6936
- SEC. 33/45/43 INDICATES SECTION/TOWNSHIP/RANGE

Dean Surveying & Mapping, Inc.
 (The Measuring Line Shall Go Forth Jer. 31:39)
 4201 Westgate Avenue, Suite A-3
 West Palm Beach, Florida 33409
 Tel: (561) 625-8748 Facsimile: (561) 626-4558
 DATE: 11-2017
 DRAWN: SK SCALE: GRAPHIC
 SHEET: 2 of 2 JOB No.: 017-1002

THIS INSTRUMENT WAS PREPARED BY RICHARD N. DEAN, P.S.M. #4406
 IN THE OFFICE OF DEAN SURVEYING & MAPPING, INC., LB#6936
 4201 WESTGATE AVENUE, SUITE A3, WEST PALM BEACH, FL. 33409