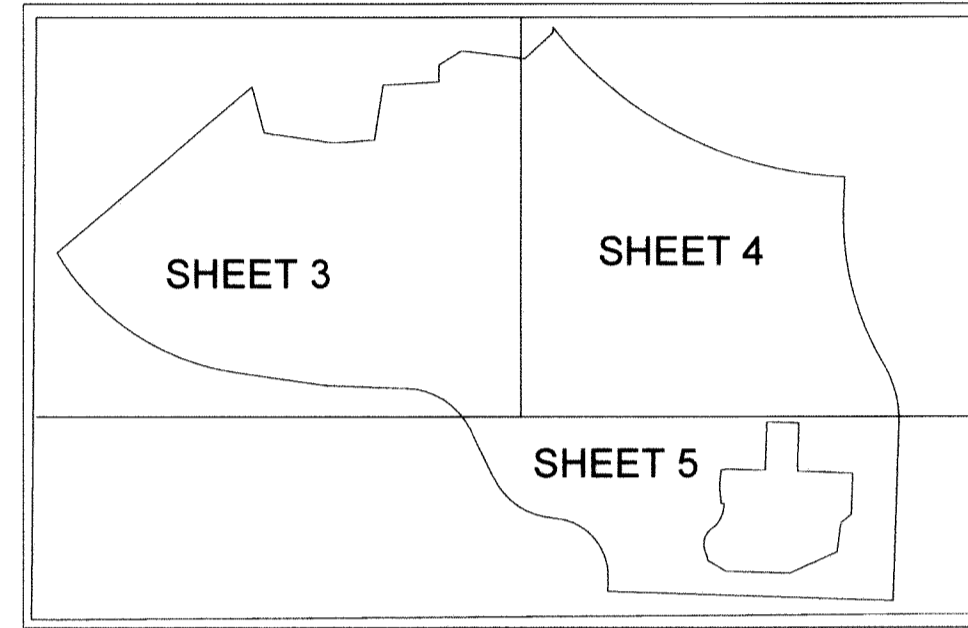


WELLINGTON GREEN, A MUPD/PUD, RE-PLAT NO. 4

BEING A REPLAT OF A PORTION OF WELLINGTON GREEN, A MUPD/PUD, A REPLAT OF A PORTION OF PARCEL 1, PLAT BOOK 112, PAGES 126 THROUGH 129 INCLUSIVE, PUBLIC RECORDS OF PALM BEACH COUNTY, FLORIDA, AND ALL OF WELLINGTON GREEN, A MUPD/PUD, RE-PLAT NO. 3, PLAT BOOK 112, PAGES 173 THROUGH 176 INCLUSIVE, PUBLIC RECORDS OF PALM BEACH COUNTY, FLORIDA. LYING IN SECTION 13, TOWNSHIP 44 SOUTH, RANGE 41 EAST, VILLAGE OF WELLINGTON, PALM BEACH COUNTY, FLORIDA.

5

SHEET INDEX

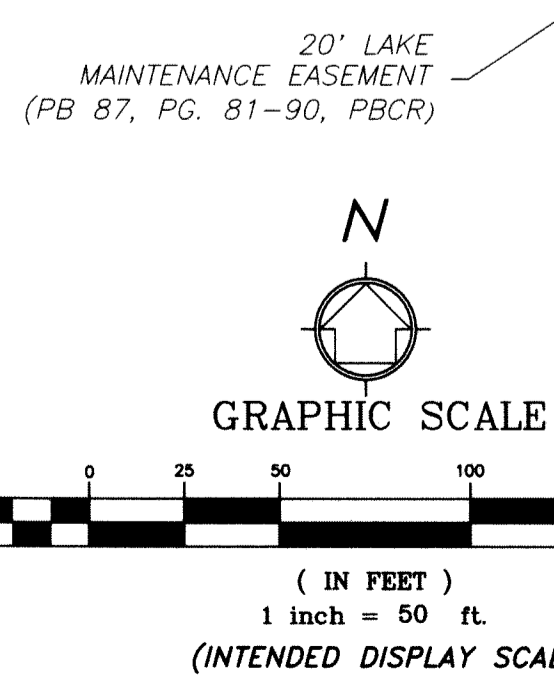


NOT TO SCALE

LEGEND

- CL = CENTER LINE
- CCR = CERTIFIED CORNER RECORD
- CONC. = CONCRETE
- CMON = CONCRETE MONUMENT
- CB = CORD BEARING
- CD = CORD DISTANCE
- Δ = DELTA (CENTRAL ANGLE)
- DE = DRAINAGE EASEMENT
- FPL = FLORIDA POWER & LIGHT
- FND. = FOUND
- LMAE = LAKE MAINTENANCE ACCESS EASEMENT
- L.M.E. = LAKE MAINTENANCE EASEMENT
- L = LENGTH OF ARC
- LB = LICENSED BUSINESS
- MUPD = MULTIPLE USE PLANNED DEVELOPMENT
- NAD = NORTH AMERICAN DATUM
- NO. = NUMBER
- NT = NON TANGENT
- (NR) = NON RADIAL
- ORB = OFFICIAL RECORDS BOOK
- PBCR = PALM BEACH COUNTY RECORDS
- PG. = PAGE
- PB. = PLAT BOOK
- PRM = PERMANENT REFERENCE MONUMENT
- PUD = PLANNED UNIT DEVELOPMENT
- PT = POINT OF TANGENCY
- PC = POINT OF CURVATURE
- PRC = POINT OF REVERSE CURVATURE
- R = RADIUS
- R/W = RIGHT-OF-WAY
- RPB = ROAD PLAT BOOK
- SSE = SANITARY SEWER EASEMENT
- (TYP.) = TYPICAL
- UE = UTILITY EASEMENT
- W/ = WITH
- WME = WATER MAIN EASEMENT
- WSE = WATER & SEWER EASEMENT
- UE = UTILITY EASEMENT
- = SET 4"x4" CONCRETE (PRM) W/ALUMINUM DISC STAMPED "LB 7055 PRM" UNLESS OTHERWISE NOTED
- ⊙ = SET NAIL & BRASS DISC STAMPED "LB 7055 PRM" UNLESS OTHERWISE NOTED

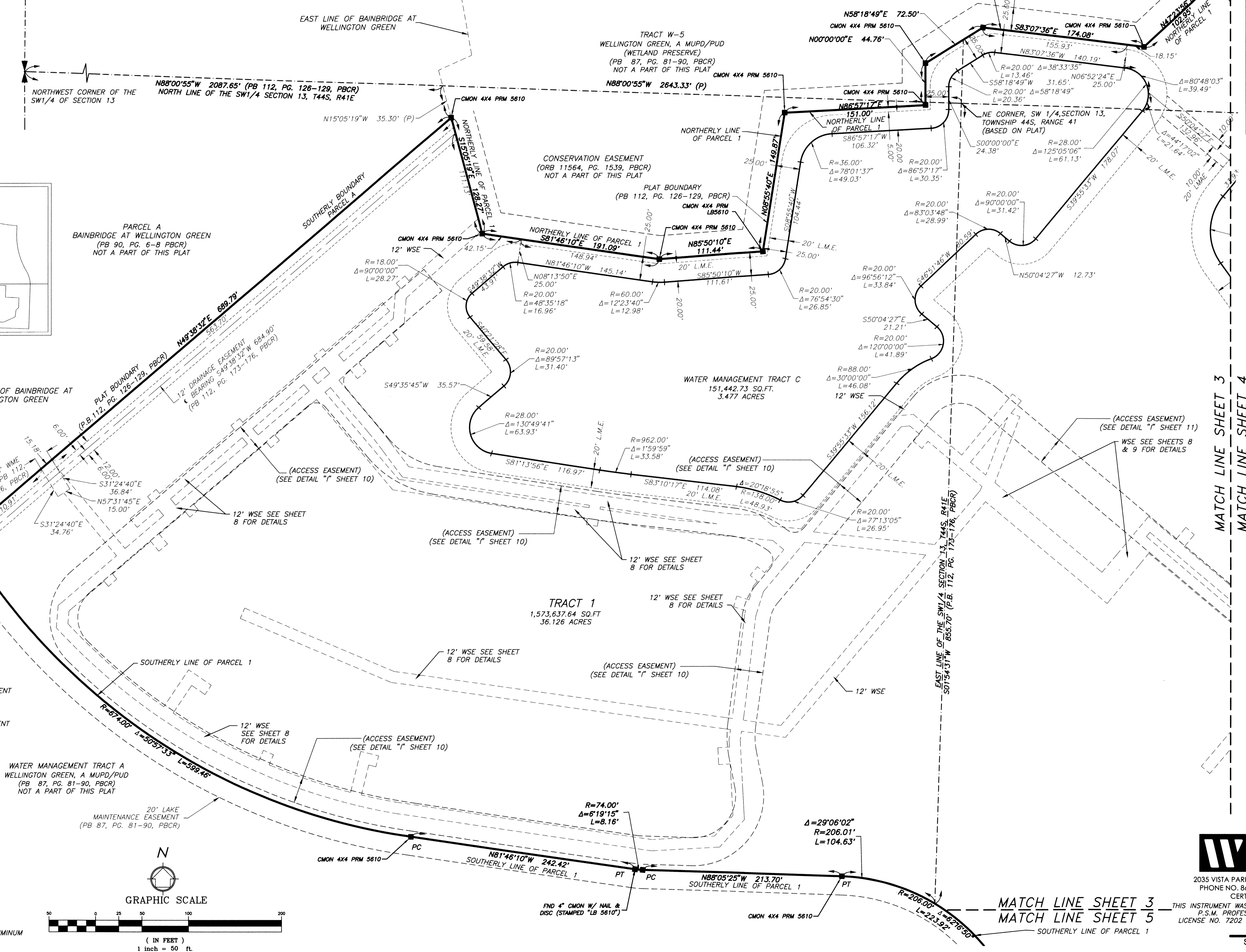
WATER MANAGEMENT TRACT A
WELLINGTON GREEN, A MUPD/PUD
(PB 87, PG. 81-90, PBCR)
NOT A PART OF THIS PLAT



WATER MANAGEMENT TRACT C
151,442.73 SQ.FT.
3.477 ACRES

TRACT 1
1,573,637.64 SQ.FT.
36.126 ACRES

FND 4" CMON W/ NAIL & DISC (STAMPED "LB 5610")



MATCH LINE SHEET 3
MATCH LINE SHEET 4

MATCH LINE SHEET 3
MATCH LINE SHEET 5



2035 VISTA PARKWAY, WEST PALM BEACH, FL 33411
PHONE NO. 866.909.2220 WWW.WGINC.COM
CERT NO. 6091 - LB NO. 7055

THIS INSTRUMENT WAS PREPARED BY KENNETH J. BUCHANAN, P.S.M. PROFESSIONAL SURVEYOR AND MAPPER, LICENSE NO. 7202 FOR THE FIRM: WANTMAN GROUP, INC.

SHEET #	TOTAL SHEETS
3	11