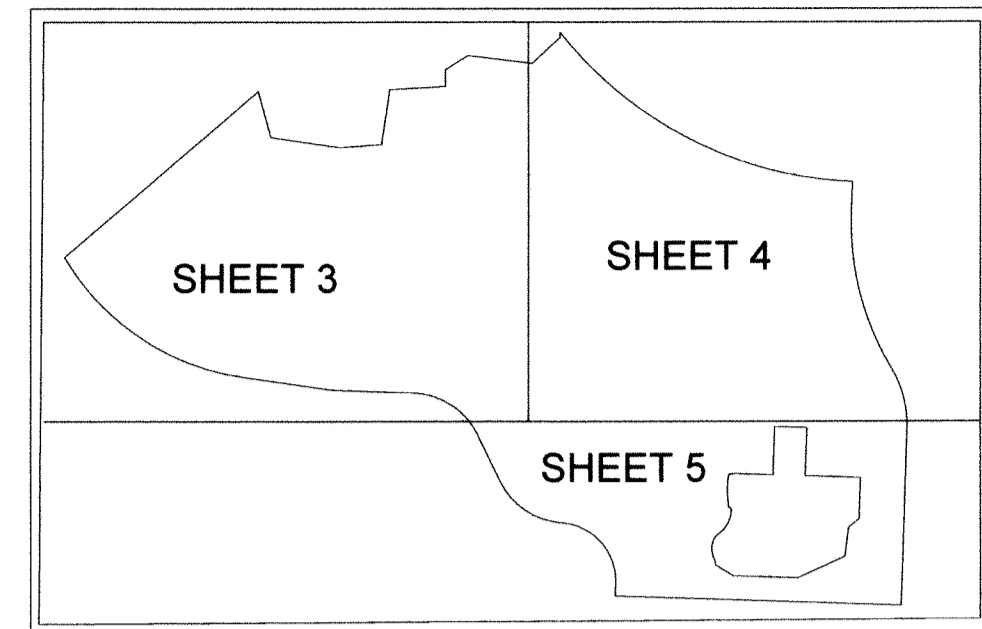


WELLINGTON GREEN, A MUPD/PUD, RE-PLAT NO. 4

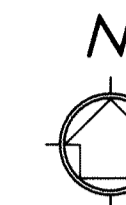
BEING A REPLAT OF A PORTION OF WELLINGTON GREEN, A MUPD/PUD, A REPLAT OF A PORTION OF PARCEL 1, PLAT BOOK 112, PAGES 126 THROUGH 129 INCLUSIVE, PUBLIC RECORDS OF PALM BEACH COUNTY, FLORIDA, AND ALL OF WELLINGTON GREEN, A MUPD/PUD, RE-PLAT NO. 3, PLAT BOOK 112, PAGES 173 THROUGH 176 INCLUSIVE, PUBLIC RECORDS OF PALM BEACH COUNTY, FLORIDA. LYING IN SECTION 13, TOWNSHIP 44 SOUTH, RANGE 41 EAST, VILLAGE OF WELLINGTON, PALM BEACH COUNTY, FLORIDA.

SHEET INDEX

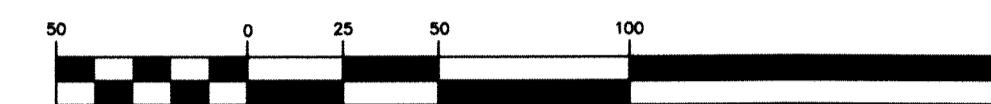


NOT TO SCALE

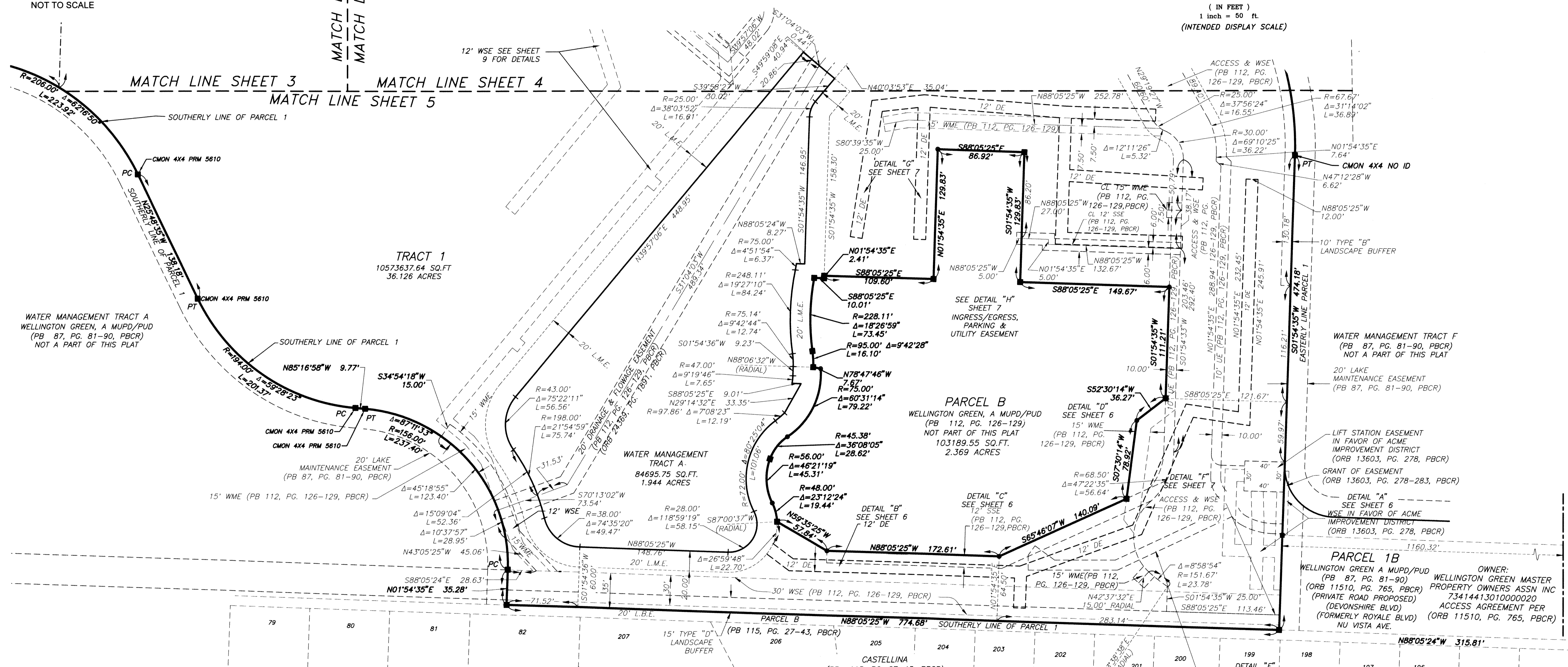
MATCH LINE SHEET 3
MATCH LINE SHEET 4



GRAPHIC SCALE



(IN FEET)
1 inch = 50 ft
(INTENDED DISPLAY SCALE)



LEGEND			
CL	= CENTER LINE	PB	= PLAT BOOK
CCR	= CERTIFIED CORNER RECORD	PRM	= PERMANENT REFERENCE MONUMENT
CONC.	= CONCRETE	PUD	= PLANNED UNIT DEVELOPMENT
CMON	= CONCRETE MONUMENT	PT	= POINT OF TANGENCY
CB	= CORD BEARING	PC	= POINT OF CURVATURE
CD	= CORD DISTANCE	PRC	= POINT OF REVERSE CURVATURE
Δ	= DELTA (CENTRAL ANGLE)	R	= RADIUS
DE	= DRAINAGE EASEMENT	R/W	= RIGHT-OF-WAY
FPL	= FLORIDA POWER & LIGHT	RPB	= ROAD PLAT BOOK
FND.	= FOUND	SSE	= SANITARY SEWER EASEMENT
LMAE	= LAKE MAINTENANCE ACCESS EASEMENT	(TYP.)	= TYPICAL
L.M.E.	= LAKE MAINTENANCE EASEMENT	UE	= UTILITY EASEMENT
L	= LENGTH OF ARC	W/	= WITH
LB	= LICENSED BUSINESS	WME	= WATER MAIN EASEMENT
MUPD	= MULTIPLE USE PLANNED DEVELOPMENT	WSE	= WATER & SEWER EASEMENT
NAD	= NORTH AMERICAN DATUM	UE	= UTILITY EASEMENT
NO.	= NUMBER	■	= SET 4"x4" CONCRETE (PRM) W/ALUMINUM DISC STAMPED "LB 7055 PRM" UNLESS OTHERWISE NOTED
NT	= NON TANGENT	⊙	= SET NAIL & BRASS DISC STAMPED "LB 7055 PRM" UNLESS OTHERWISE NOTED
(NR)	= NON RADIAL		
ORB	= OFFICIAL RECORDS BOOK		
PBCR	= PALM BEACH COUNTY RECORDS		
PG.	= PAGE		

PARCEL 1B
WELLINGTON GREEN A MUPD/PUD
(PB 87, PG. 81-90, PBCR)
(ORB 11510, PG. 765, PBCR)
(PRIVATE ROAD PROPOSED)
(DEVONSHIRE BLVD)
NU VISTA AVE.

OWNER:
WELLINGTON GREEN MASTER
PROPERTY OWNERS ASSN INC
7341441301000020
ACCESS AGREEMENT PER
(ORB 11510, PG. 765, PBCR)



2035 VISTA PARKWAY, WEST PALM BEACH, FL 33411
PHONE NO. 866.909.2220 WWW.WGINC.COM
CERT NO. 6091 - LB NO. 7055

THIS INSTRUMENT WAS PREPARED BY KENNETH J. BUCHANAN, P.S.M. PROFESSIONAL SURVEYOR AND MAPPER, LICENSE NO. 7202 FOR THE FIRM: WANTMAN GROUP, INC.

7