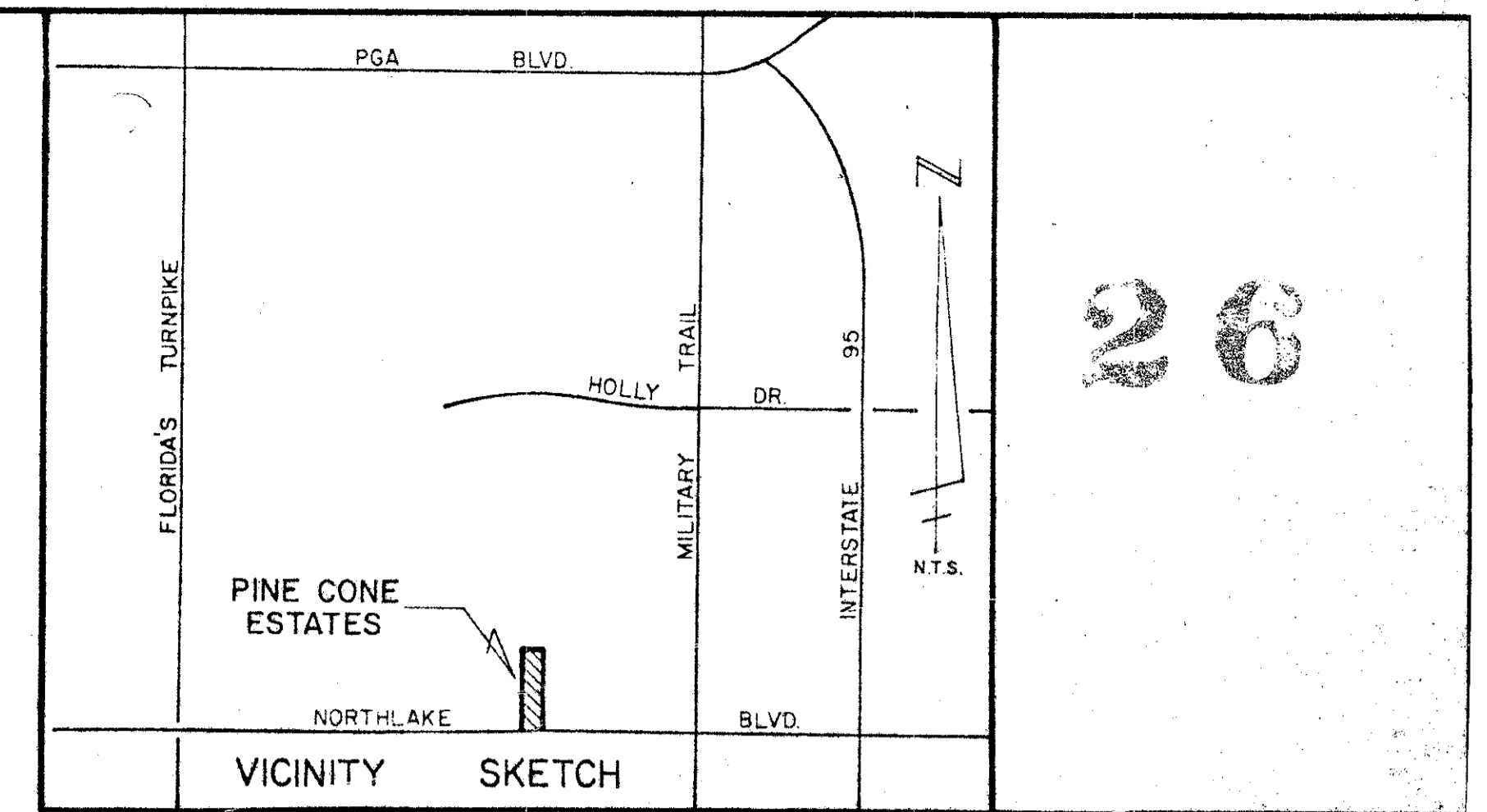


# PLAT OF PINE CONE ESTATES

IN SECTION 13, TOWNSHIP 42 SOUTH, RANGE 42 EAST.  
PALM BEACH COUNTY, FLORIDA

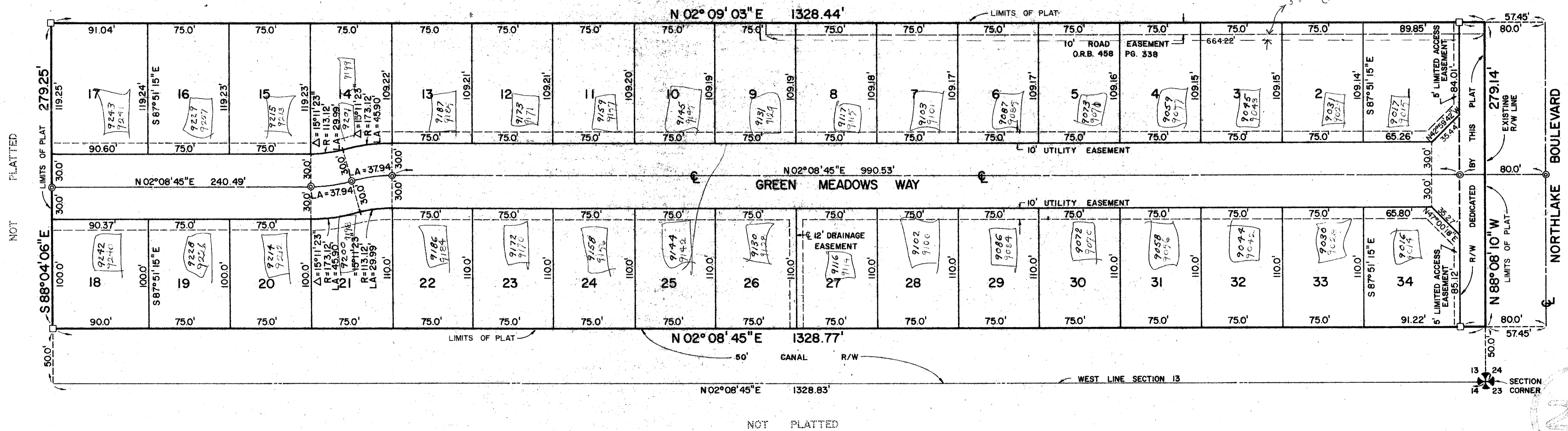


28



SCALE: 1" = 50'

NOT PLATTED



NOTES:

- There shall be no buildings or structures placed on public utility easements.
- There shall be no buildings or the planting of trees or shrubs on drainage easements.
- Bearings shown hereon refer to an assumed bearing of North 02° 08' 45" East along the West Line of Section 13, Township 42 South, Range 42 East, Palm Beach County, Florida.
- ⊙ Denotes Permanent Control Points (P.C.P.)
- = Denotes Permanent Reference Monuments (P.R.M.)

1000-093

13/42/42

This instrument was prepared by Kenneth L. Scrape, at the office of William G. Wallace, Inc., 321 Northlake Boulevard, Suite 109, North Palm Beach, Florida 33408.

PINE CONE ESTATES

36  
26

PLAT OF			
PINE CONE ESTATES			
WILLIAM G. WALLACE, INC. Consulting Engineers & Land Surveyors 321 Northlake Blvd., Suite 109, North Palm Beach, Florida			
FIELD NO. K.N.	JOB NO. J76-826	FILE NO. 13-42-42	
OFFICE W.JORDAN	DATE JAN. 1978	DWG. NO. 76-492	
CK'D: K.L.S.	REF.	SHEET 2 OF 2	