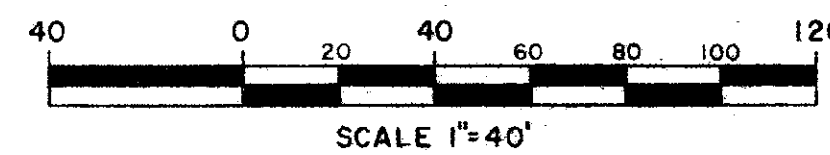


# PERIGON POINT

A SUBDIVISION LYING IN A PORTION OF GOVERNMENT LOT 5, SECTION 36, TOWNSHIP 40 SOUTH, RANGE 42 EAST  
PALM BEACH COUNTY, FLORIDA

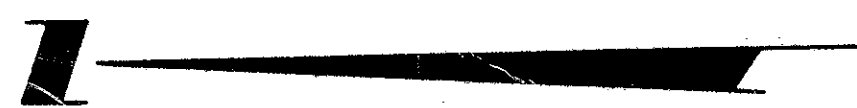
38

SHEET 2 OF 2



DECEMBER 1977

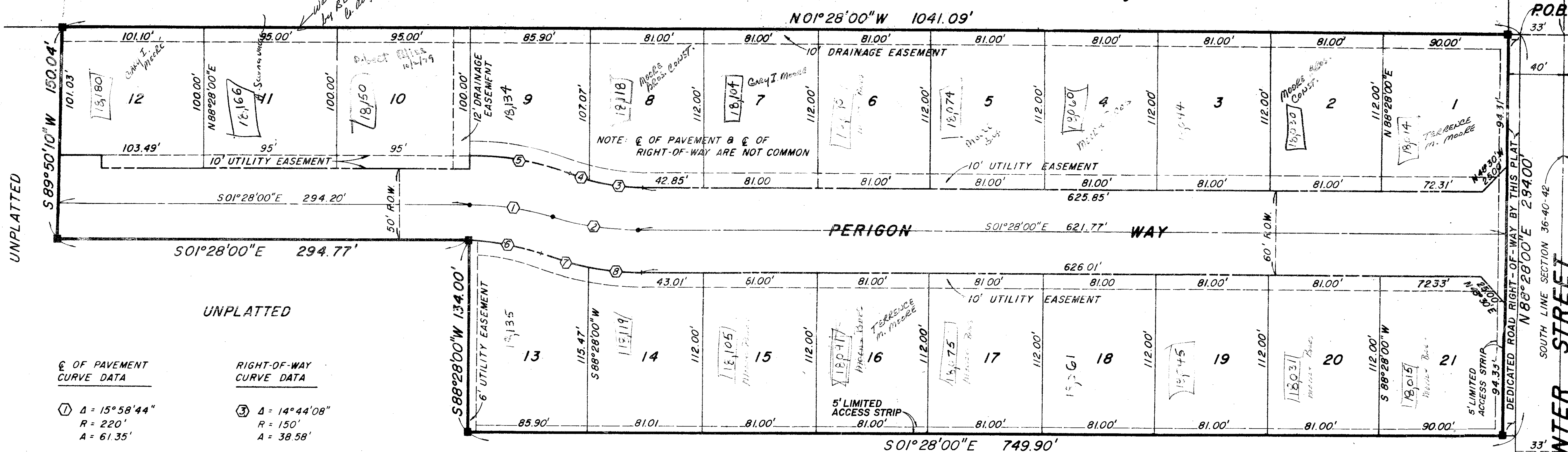
S. E. CORNER GOV'T LOT 5 SEC. 36-40-42  
EAST LINE S.W. 1/4 SEC. 36-40-42  
EAST LINE GOV'T. LOT 5 SEC. 36-40-42  
SOUTH 1/4 CORNER SEC. 36-40-42



PENN WATERWAY  
P.B. 25 Pg. 203

LIMITS OF TOWN OF JUPITER

40' Palm Beach County Drainage Easement Recorded In O.R. Book 198 Page 59



1st ADDITION TO IRONWOOD  
P.B. 31, Pg. 1

PENN PARK  
P.B. 25, Pg. 189

Δ OF PAVEMENT CURVE DATA	RIGHT-OF-WAY CURVE DATA	RIGHT-OF-WAY CURVE DATA
① Δ = 15°58'44" R = 220' A = 61.35'	③ Δ = 14°44'08" R = 150' A = 38.58'	⑦ Δ = 09°42'35" R = 210' A = 35.59'
② Δ = 15°58'44" R = 220' A = 61.35'	④ Δ = 5°23'56" R = 150' A = 14.13'	⑧ Δ = 10°25'29" R = 210' A = 38.21'
	⑤ Δ = 20°08'03" R = 210' A = 73.80'	
	⑥ Δ = 20°08'03" R = 150' A = 52.71'	

Surveyor's Notes  
MONUMENTATION:  
■ DENOTES PERMANENT REFERENCE MONUMENT (P.R.M.)  
● DENOTES PERMANENT CONTROL POINT (P.C.P.)  
BEARING BASE:  
N 88°28'00" E CENTERLINE OF CENTER STREET AS PER PLATS OF PENN PARK, PLAT BOOK 25, PAGE 89 AND FIRST ADDITION TO IRONWOOD, PLAT BOOK 31, PAGE 1, PALM BEACH COUNTY, FLORIDA PUBLIC RECORDS.

1000-095