

STATE OF FLORIDA
COUNTY OF PALM BEACH
THIS PLAT WAS FILED FOR
RECORD AT _____ M.
THIS _____ DAY OF _____
A.D., 1978 AND DULY RE-
CORDED IN PLAT BOOK _____
ON PAGES _____ AND _____
JOHN B. DUNKLE, CLERK
CIRCUIT COURT
BY: _____ DC

UNPLATTED ACREAGE
N. 89° 58' 28" E. 1278.99'

N. LINE S.E. 1/4-S.E. 1/4-SEC. 2-42-

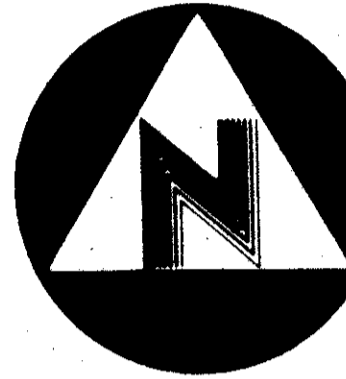
W. LINE S.E. 1/4-S.E. 1/4-SEC. 2-42-42

N. 00° 25' 27" E. 957.85'

111.00'

128.70'

MATCH



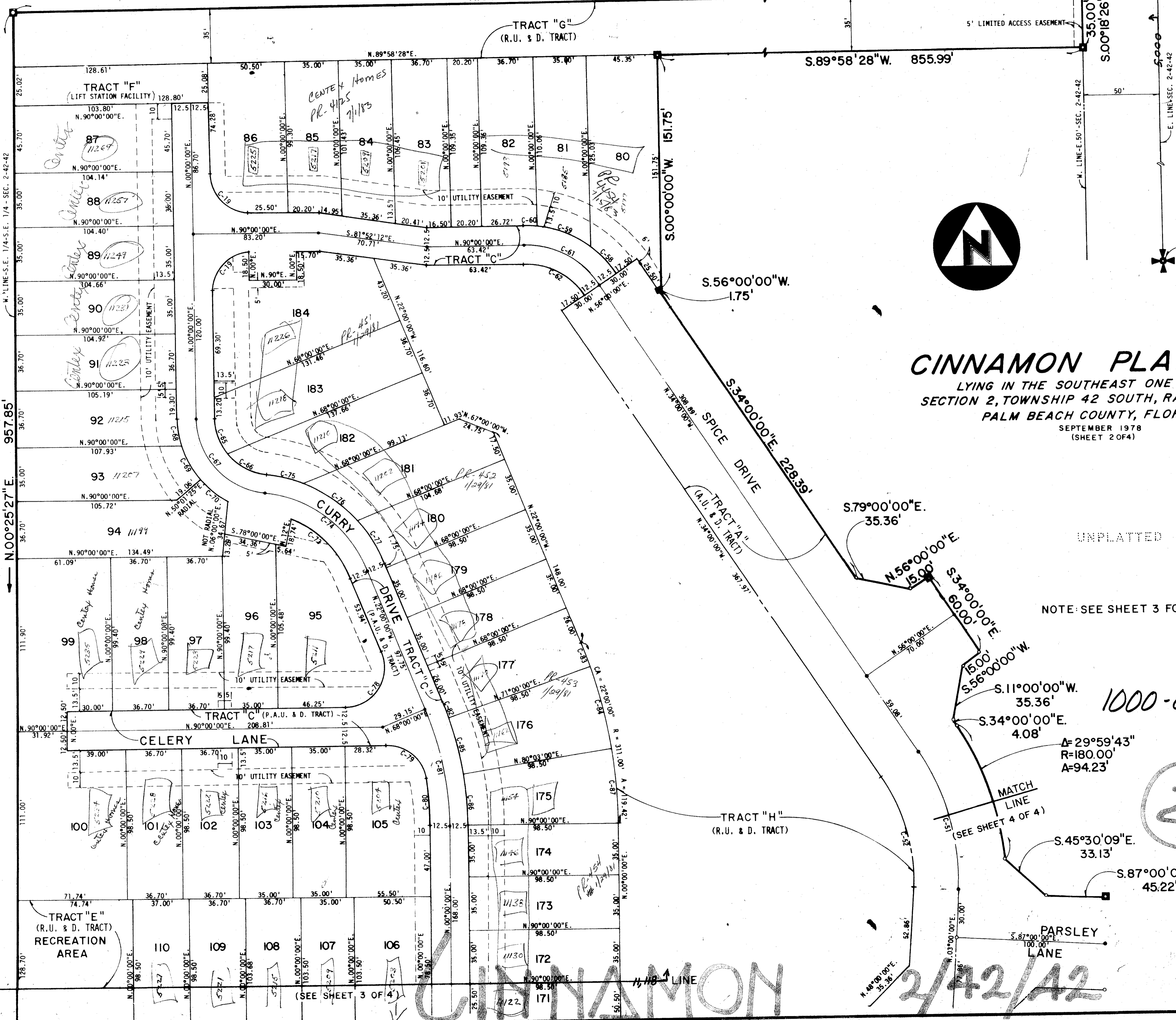
CINNAMON PLAT NO. 1

LYING IN THE SOUTHEAST ONE QUARTER
SECTION 2, TOWNSHIP 42 SOUTH, RANGE 42 EAST,
PALM BEACH COUNTY, FLORIDA.

SEPTEMBER 1978
(SHEET 2 OF 4)

UNPLATTED ACREAGE

NOTE: SEE SHEET 3 FOR CURVE DATA



1000-097

28

$\Delta = 29^\circ 59' 43''$
 $R = 180.00'$
 $A = 94.23'$

MATCH LINE
(SEE SHEET 4 OF 4)

S. 45° 30' 09" E. 33.13'

S. 87° 00' 00" E. 45.22'

PARSLEY LANE

2/42/42

THIS INSTRUMENT WAS PREPARED BY ROBERT J. WHIDDEN IN THE OFFICES OF BENCH MARK LAND SURVEYING AND ENGINEERING, INC., 3509 S.W. 15th AVENUE, WEST PALM BEACH, FLORIDA 33409. PHONE NO. (305) 889-2111.

CONRAD W. SCHAEFER CONSULTING ENGINEERS, INC.
PALM BEACH COUNTY, FLORIDA

DATE OF FIELD SURVEY	SHEET 2 OF 4
DRAWN BY	EMERSON SEAL
SCALE	1" = 50'
DATE OF PLAT	
BY WHO AND NO.	
DATE OF FIELD SURVEY	

CINNAMON PLAT NO. 1

CONRAD W. SCHAEFER CONSULTING ENGINEERS, INC.
PALM BEACH COUNTY, FLORIDA

UNPLATTED ACREAGE