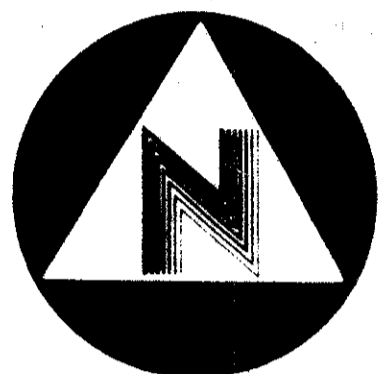


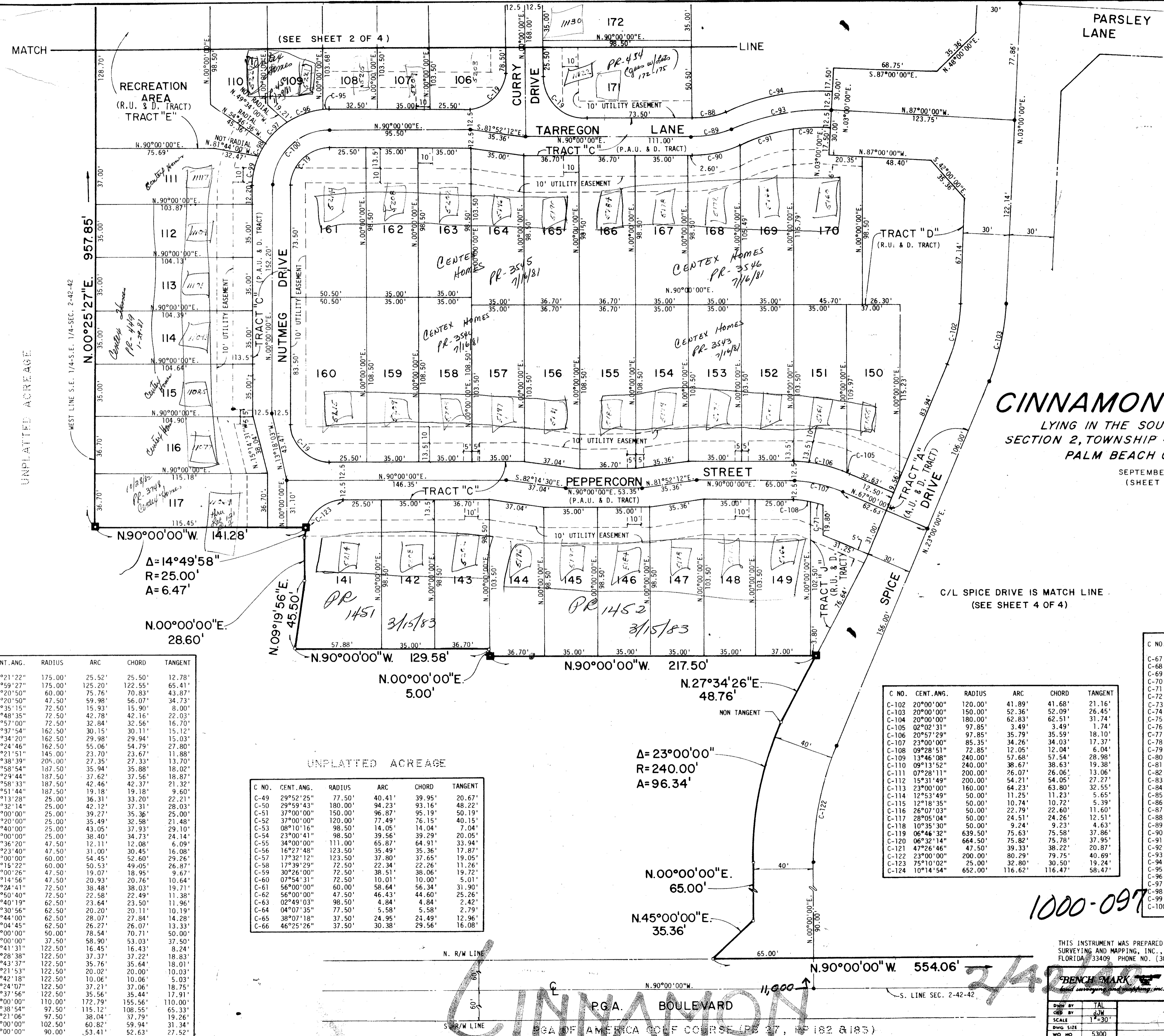
STATE OF FLORIDA
COUNTY OF PALM BEACH
THIS PLAT WAS FILED FOR
RECORD AT _____ M.
THIS _____ DAY OF _____
A.D., 1978 AND DULY RE-
CORDED IN PLAT BOOK
PAGES _____ AND _____
JOHN B. DUNKLE, CLERK
CIRCUIT COURT
BY: _____ DC



CINNAMON PLAT NO. 1

LYING IN THE SOUTHEAST ONE QUARTER
SECTION 2, TOWNSHIP 42 SOUTH, RANGE 42 EAST,
PALM BEACH COUNTY, FLORIDA.

SEPTEMBER 1978
(SHEET 3 OF 4)



$\Delta = 14^{\circ}49'58''$
 $R = 25.00'$
 $A = 6.47'$

$N.00^{\circ}00'00''E.$
 $28.60'$

$\Delta = 23^{\circ}00'00''$
 $R = 240.00'$
 $A = 96.34'$

C/L SPICE DRIVE IS MATCH LINE
(SEE SHEET 4 OF 4)

C. NO.	CENT. ANG.	RADIUS	ARC	CHORD	TANGENT
C-1	08°21'22"	175.00'	25.52'	25.50'	12.78'
C-2	40°59'27"	175.00'	125.20'	125.55'	65.41'
C-3	72°20'50"	60.00'	75.76'	70.83'	43.87'
C-4	72°20'50"	47.50'	59.98'	56.07'	34.73'
C-5	12°35'15"	72.50'	15.93'	15.90'	8.00'
C-6	33°48'35"	72.50'	42.78'	42.16'	22.03'
C-7	25°57'00"	72.50'	32.84'	32.56'	16.70'
C-8	10°37'54"	162.50'	30.15'	30.11'	15.12'
C-9	10°34'20"	162.50'	29.98'	29.94'	15.03'
C-10	19°24'46"	162.50'	55.06'	54.79'	27.80'
C-11	09°21'51"	145.00'	23.70'	23.67'	11.88'
C-12	07°38'39"	205.00'	27.35'	27.33'	13.70'
C-13	10°58'54"	187.50'	35.94'	35.88'	18.02'
C-14	11°29'44"	187.50'	37.62'	37.56'	18.87'
C-15	12°58'33"	187.50'	42.46'	42.37'	21.32'
C-16	05°51'44"	187.50'	19.18'	19.18'	9.60'
C-17	83°13'28"	25.00'	36.31'	33.20'	22.21'
C-18	96°32'14"	25.00'	42.12'	37.31'	28.03'
C-19	90°00'00"	25.00'	39.27'	35.36'	25.00'
C-20	81°20'00"	25.00'	35.49'	32.58'	21.48'
C-21	98°40'00"	25.00'	43.05'	37.93'	29.10'
C-22	88°00'00"	25.00'	38.40'	34.73'	24.14'
C-23	147°36'20"	47.50'	12.11'	12.08'	6.09'
C-24	37°23'40"	47.50'	31.00'	30.45'	16.08'
C-25	52°00'00"	60.00'	54.45'	52.60'	29.26'
C-26	48°15'22"	60.00'	50.53'	49.05'	26.87'
C-27	23°00'26"	47.50'	19.07'	18.95'	9.67'
C-28	25°14'56"	47.50'	20.93'	20.76'	10.64'
C-29	30°24'41"	72.50'	38.48'	38.03'	19.71'
C-30	17°50'40"	72.50'	22.58'	22.49'	11.38'
C-31	21°40'19"	62.50'	23.64'	23.50'	11.96'
C-32	18°30'56"	62.50'	20.20'	20.11'	10.19'
C-33	25°44'00"	62.50'	28.07'	27.84'	14.28'
C-34	24°04'45"	62.50'	26.27'	26.07'	13.33'
C-35	90°00'00"	50.00'	78.54'	70.71'	50.00'
C-36	90°00'00"	37.50'	58.90'	53.03'	37.50'
C-37	07°41'31"	122.50'	16.45'	16.43'	8.24'
C-38	17°28'38"	122.50'	37.37'	37.22'	18.83'
C-39	16°43'37"	122.50'	35.76'	35.64'	18.01'
C-40	09°21'53"	122.50'	20.02'	20.00'	10.03'
C-41	04°42'18"	122.50'	10.06'	10.06'	5.03'
C-42	17°24'07"	122.50'	37.21'	37.06'	18.75'
C-43	16°37'56"	122.50'	35.56'	35.44'	17.91'
C-44	90°00'00"	110.00'	172.79'	155.56'	110.00'
C-45	67°38'54"	97.50'	115.12'	108.55'	65.33'
C-46	22°21'06"	97.50'	38.04'	37.79'	19.26'
C-47	34°00'00"	102.50'	60.82'	59.94'	31.34'
C-48	34°00'00"	90.00'	53.41'	52.63'	27.52'

C. NO.	CENT. ANG.	RADIUS	ARC	CHORD	TANGENT
C-49	29°52'25"	77.50'	40.41'	39.95'	20.67'
C-50	29°59'43"	180.00'	94.23'	93.16'	48.22'
C-51	37°00'00"	150.00'	96.87'	95.19'	50.19'
C-52	37°00'00"	120.00'	76.15'	76.15'	40.15'
C-53	08°10'16"	98.50'	14.05'	14.04'	7.04'
C-54	23°00'41"	98.50'	39.56'	39.29'	20.05'
C-55	34°00'00"	111.00'	65.87'	64.91'	33.94'
C-56	16°27'48"	123.50'	35.49'	35.36'	17.87'
C-57	17°32'12"	123.50'	37.80'	37.65'	19.05'
C-58	17°39'29"	72.50'	22.34'	22.26'	11.26'
C-59	30°26'00"	72.50'	38.51'	38.06'	19.72'
C-60	07°54'31"	72.50'	10.01'	10.00'	5.01'
C-61	56°00'00"	60.00'	58.64'	56.34'	31.90'
C-62	56°00'00"	47.50'	46.43'	44.60'	25.26'
C-63	02°49'03"	98.50'	4.84'	4.84'	2.42'
C-64	04°07'35"	77.50'	5.58'	5.58'	2.79'
C-65	38°07'18"	37.50'	24.95'	24.49'	12.96'
C-66	46°25'26"	37.50'	30.38'	29.56'	16.08'

C. NO.	CENT. ANG.	RADIUS	ARC	CHORD	TANGENT
C-102	20°00'00"	120.00'	41.89'	41.68'	21.16'
C-103	20°00'00"	150.00'	52.36'	52.09'	26.45'
C-104	20°00'00"	180.00'	62.83'	62.51'	31.74'
C-105	02°02'31"	97.85'	3.49'	3.49'	1.74'
C-106	20°57'29"	97.85'	35.79'	35.59'	18.10'
C-107	23°00'00"	85.35'	34.26'	34.03'	17.37'
C-108	09°28'51"	72.85'	12.05'	12.04'	6.04'
C-109	13°46'08"	240.00'	57.68'	57.54'	28.98'
C-110	09°13'52"	240.00'	38.67'	38.63'	19.38'
C-111	07°28'11"	200.00'	26.07'	26.06'	13.06'
C-112	15°31'49"	200.00'	54.21'	54.05'	27.27'
C-113	23°00'00"	160.00'	64.23'	63.80'	32.55'
C-114	12°53'49"	50.00'	11.25'	11.23'	5.65'
C-115	12°18'35"	50.00'	10.74'	10.72'	5.39'
C-116	26°07'03"	50.00'	22.60'	22.60'	11.60'
C-117	28°05'04"	50.00'	24.51'	24.26'	12.51'
C-118	10°35'30"	50.00'	9.24'	9.23'	4.63'
C-119	06°46'32"	639.50'	75.63'	75.58'	37.86'
C-120	06°32'14"	664.50'	75.82'	75.78'	37.95'
C-121	47°26'46"	47.50'	39.33'	38.22'	20.87'
C-122	23°00'00"	200.00'	80.29'	79.75'	40.89'
C-123	75°10'02"	25.00'	32.80'	30.50'	19.24'
C-124	10°14'54"	652.00'	116.62'	116.47'	58.47'

1000-097

THIS INSTRUMENT WAS PREPARED BY ROBERT J. WHIDDEN IN THE OFFICES OF BENCH MARK LAND SURVEYING AND MAPPING, INC., 2300 PALM BEACH LAKES BLVD., SUITE 209, WEST PALM BEACH, FLORIDA 33409. PHONE NO. (305) 689-2111.

BENCH MARK
LAND SURVEYING AND MAPPING, INC.

CONRAD W. SCHAEFER CONSULTING ENGINEERS, INC.
PALM BEACH COUNTY, FLORIDA

CINNAMON PLAT NO. 1

EMBOSSED SEAL

DRAWN BY	TAL
CHECKED BY	LJM
SCALE	1"=30'
DWG. SIZE	
WO. NO.	5300
PAGE	
DATE OF FIELD SURVEY	
SHEET	3 OF