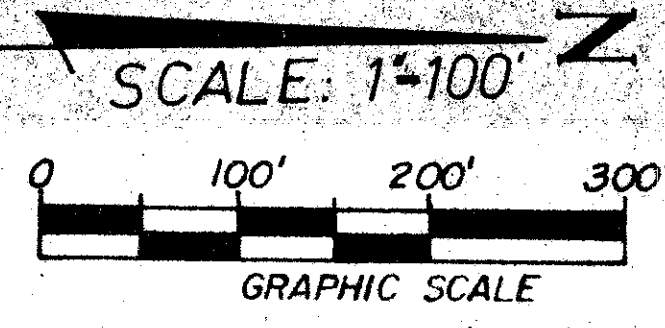


AMERICAN HOMES AT BOCA RATON

PLAT NO. 7

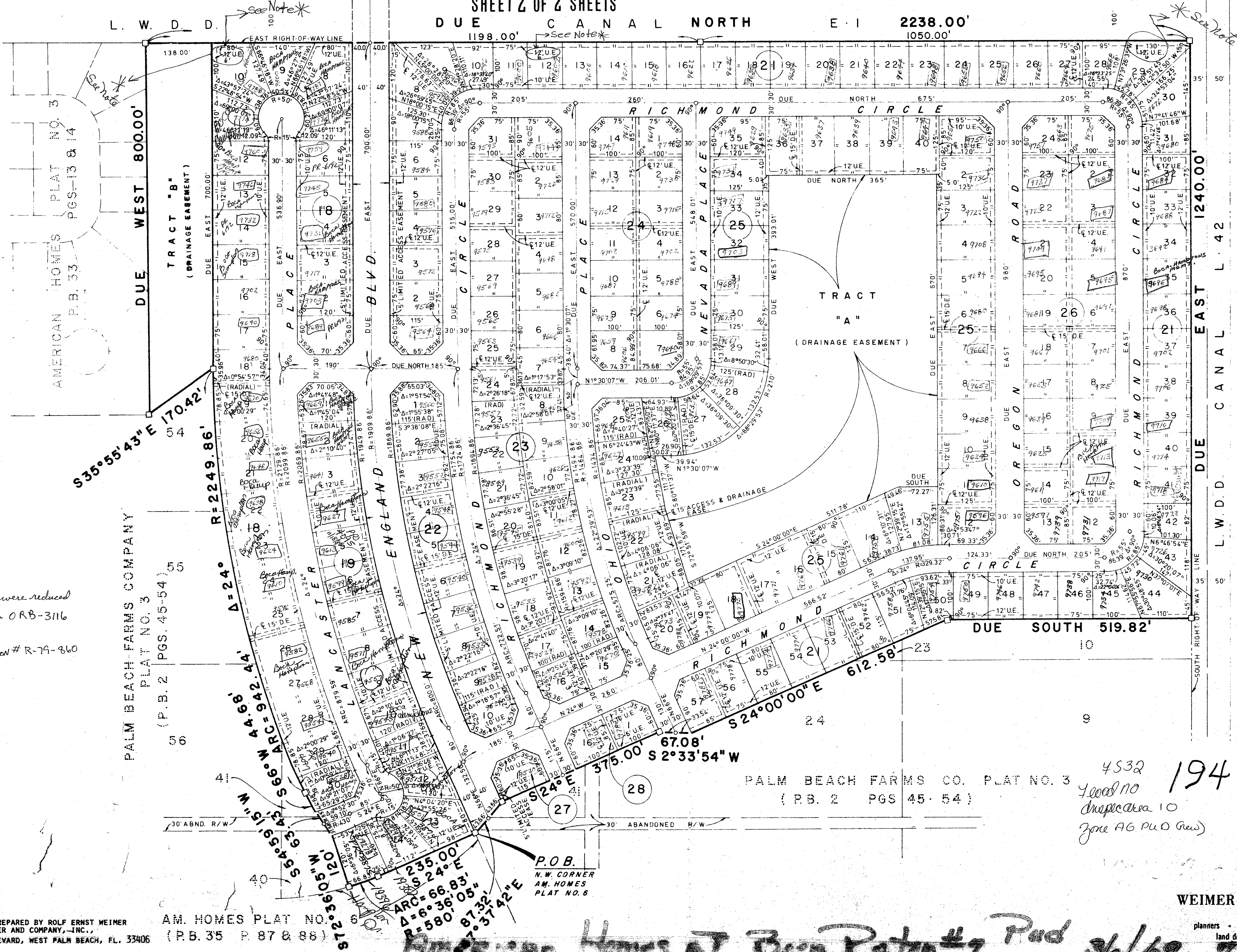


69

See BACK

SHEET 2 OF 2 SHEETS

DUE CANAL NORTH 1198.00' 2238.00' 1050.00'



Note: 12' UE were reduced by 6' per ORB-3116 PG.0037 Resolution # R-79-860

PALM BEACH FARMS COMPANY PLAT NO. 3 (P.B. 2 PGS. 45-54)

PALM BEACH FARMS CO. PLAT NO. 3 (P.B. 2 PGS. 45-54)

4532
 Year no 194-304
 Inprec area 10
 Zone AG PUO (Rev)

53

AM. HOMES PLAT NO. (P.B. 35 P. 87 & 88)

P.O.B. N.W. CORNER AM. HOMES PLAT NO. 6

WEIMER AND COMPANY INCORPORATED
 planners • land surveyors • engineers
 land development consultants

American Homes at Boca Raton #7 Pad 36/69 7/4/69