

# HOLIDAY CITY AT BOCA RATON SECTION 8

## A PLAT OF A PORTION OF SECT.25&26, TOWNSHIP 47 SOUTH, RANGE 41 EAST AND A REPLAT OF A PORTION OF BLK.12, FLORIDA FRUIT LAND CO. SUBDIVISION NO. 2 AS RECORDED IN PLAT BOOK NO.1, PAGE 102, PUBLIC RECORD OF PALM BEACH COUNTY, FLORIDA

71

**TABLE OF ARCS**

NUMBER	RADIUS	ARC	DELTA	TAN	CHORD	CHORD BRNG
1	50.00	78.99	090°30'46"	50.45	71.03	S44°19'01.0"W
2	50.00	78.13	089°31'55"	49.59	70.42	N45°39'38.5"W
3	50.00	76.95	090°28'05"	50.41	71.00	N44°20'21.5"E
4	50.00	76.09	089°29'14"	49.55	70.33	S45°40'59.0"E
5	75.00	117.14	089°29'14"	74.33	105.53	N45°40'59.0"W
5-1	16.17	012°21'15"	6.12	16.14	N0°06'59.5"W	
5-2	53.82	041°06'55"	28.13	52.67	N33°51'04.5"W	
5-3	53.82	041°06'55"	28.13	52.67	N33°51'04.5"W	
6	75.00	118.42	089°29'14"	74.33	106.50	S44°20'21.5"W
6-1	26.82	020°29'28"	13.56	26.68	S79°19'40.0"W	
6-2	53.82	041°06'55"	28.13	52.67	S48°31'28.0"W	
6-3	53.82	041°06'55"	28.13	52.67	S48°31'28.0"W	
7	75.00	117.20	089°31'55"	74.33	105.53	S45°39'38.5"E
7-1	13.08	010°00'13"	6.96	13.08	S09°53'47.5"E	
7-2	53.82	041°06'55"	28.13	52.67	S31°27'21.5"E	
7-3	53.82	041°06'55"	28.13	52.67	S31°27'21.5"E	
8	75.00	118.46	089°30'46"	74.37	106.54	N44°19'01.0"E
8-1	23.83	018°12'14"	12.05	23.79	N80°28'17.0"E	
8-2	53.82	041°06'56"	28.13	52.67	N50°48'42.0"E	
8-3	40.83	031°11'36"	20.94	40.33	N14°39'26.0"E	

**TABLE OF AREAS**

BLK. 32	SQ. FT.
L-1	9,187
L-2	10,209
L-3	14,368
L-4	8,376
L-5	7,512
L-6	7,508
L-7	7,504
L-8	7,500
L-9	7,496
L-10	7,492
L-11	7,488
L-12	7,484
L-13	7,480
L-14	7,476
L-15	7,472
L-16	7,468
L-17	7,464
L-18	7,460
L-19	7,456
L-20	7,452
L-21	7,448
L-22	7,444
L-23	7,440
L-24	7,436
L-25	7,432
L-26	7,428
L-27	7,424
L-28	7,420
L-29	7,416
L-30	7,412
L-31	7,408
L-32	7,404
L-33	7,400
L-34	7,396
L-35	7,392
L-36	7,388
L-37	7,384
L-38	7,380
L-39	7,376
L-40	7,372
L-41	7,368
TRACT-A	177,614
TRACT-B	102,423
CANAL-A	51,735
CANAL-B	25,410

BLK. 33	SQ. FT.
L-1	9,350
L-2	7,875
L-3	7,875
L-4	7,875
L-5	7,875
L-6	7,875
L-7	7,875
L-8	7,875
L-9	7,875
L-10	7,875
L-11	7,875
L-12	7,875
L-13	7,875
L-14	7,875
L-15	7,875
L-16	7,875

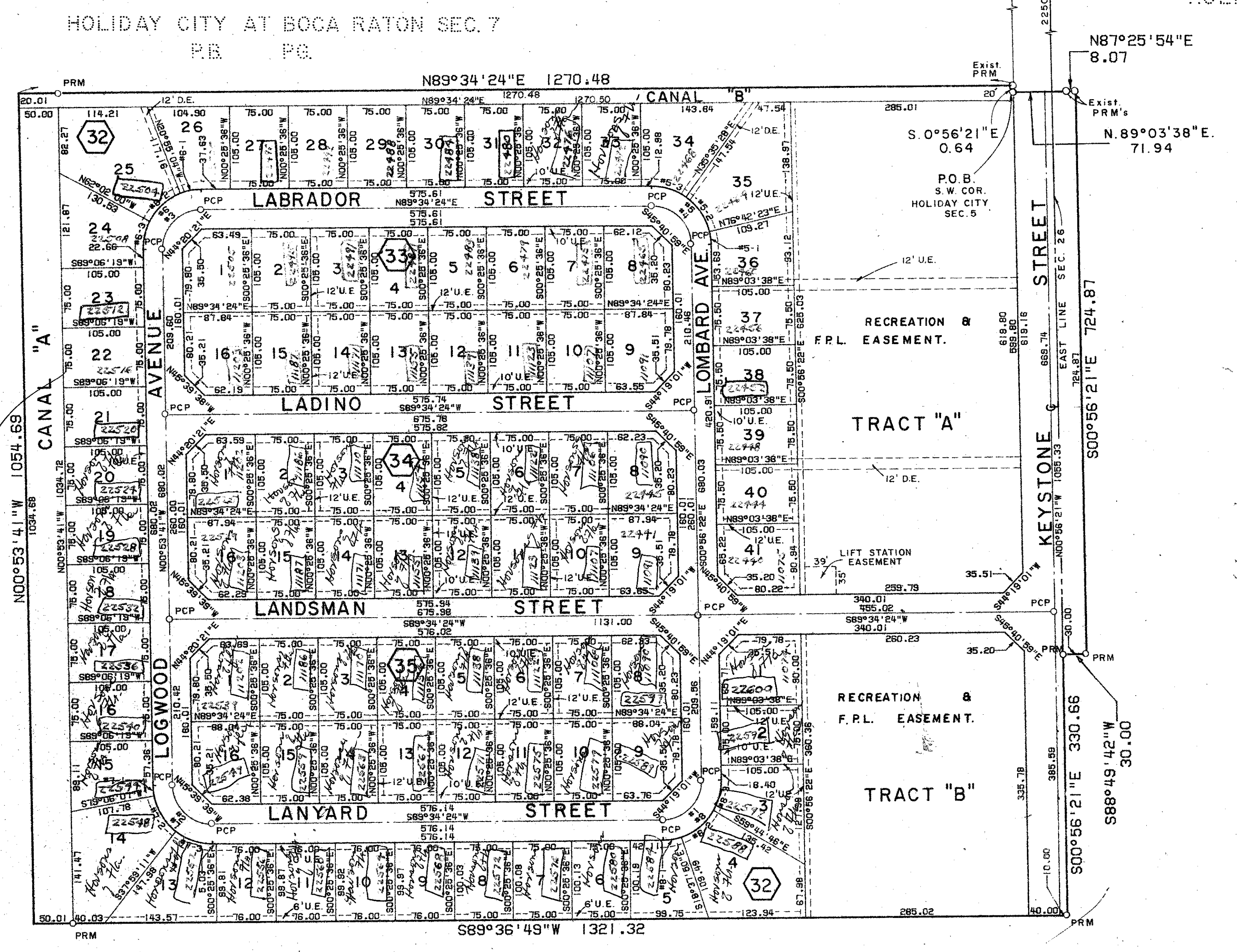
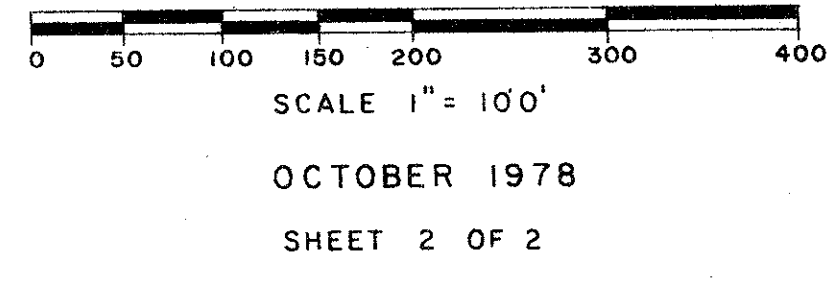
  

BLK. 34	SQ. FT.
L-1	8,361
L-2	7,875
L-3	7,875
L-4	7,875
L-5	7,875
L-6	7,875
L-7	7,875
L-8	7,875
L-9	7,875
L-10	7,875
L-11	7,875
L-12	7,875
L-13	7,875
L-14	7,875
L-15	7,875
L-16	7,875

BLK. 35	SQ. FT.
L-1	8,872
L-2	7,875
L-3	7,875
L-4	7,875
L-5	7,875
L-6	7,875
L-7	7,875
L-8	7,875
L-9	7,875
L-10	7,875
L-11	7,875
L-12	7,875
L-13	7,875
L-14	7,875
L-15	7,875
L-16	7,875
STREET	302,351
UNIT-8	1,415,217

PALM BEACH COUNTY, FLORIDA  
 JOHN A. GRANT, JR., INC. CONSULTING ENGINEERS AND LAND SURVEYORS BOCA RATON, FLORIDA



ORIOLE COUNTRY  
P.B. 32, PG. 175-180

FLORIDA FRUIT LANDS CO. SUB. NO. 2  
P.B. 1, PG. 102

FLORIDA FRUIT LANDS CO. SUB. NO. 2  
P.B. 1, PG. 102

**NOTES**

- P. R. M. Indicates Permanent Reference Monuments.
- P. C. P. Indicates Permanent Control Points.
- U. E. Utility Easement - 6' rear and side lot line, 10' front.
- D. E. Drainage Easement - 6' each side of lot line.

Bearings shown hereon are based on a bearing of S.0°56'21\"/>

There will be no buildings, trees, or shrubs placed on easements.

301  
0478-000

69

This instrument was prepared by:  
 John A. Grant, Jr., John A. Grant, Jr., Inc.  
 3333 North Federal Hwy., Boca Raton, Fla.

25/26/47/41

Holiday City at Boca Raton Section 8

36/71