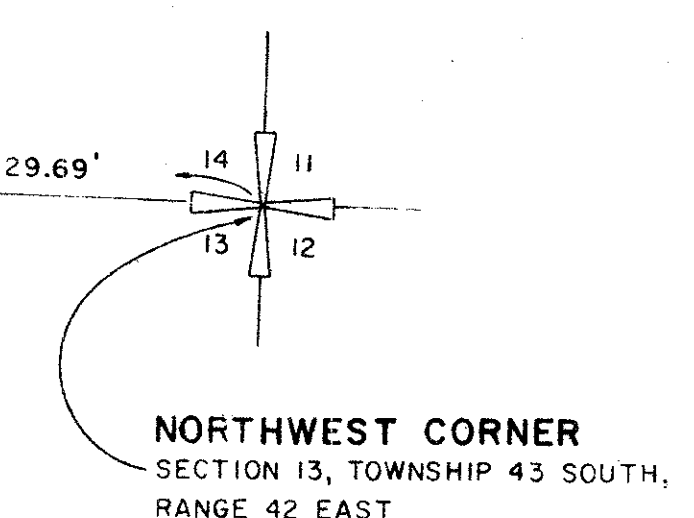
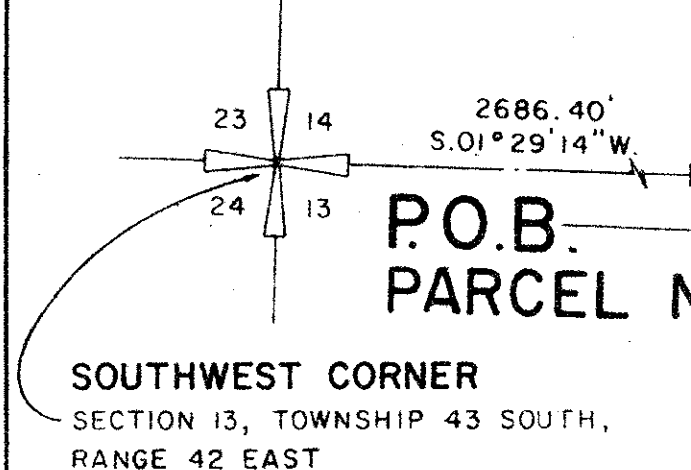
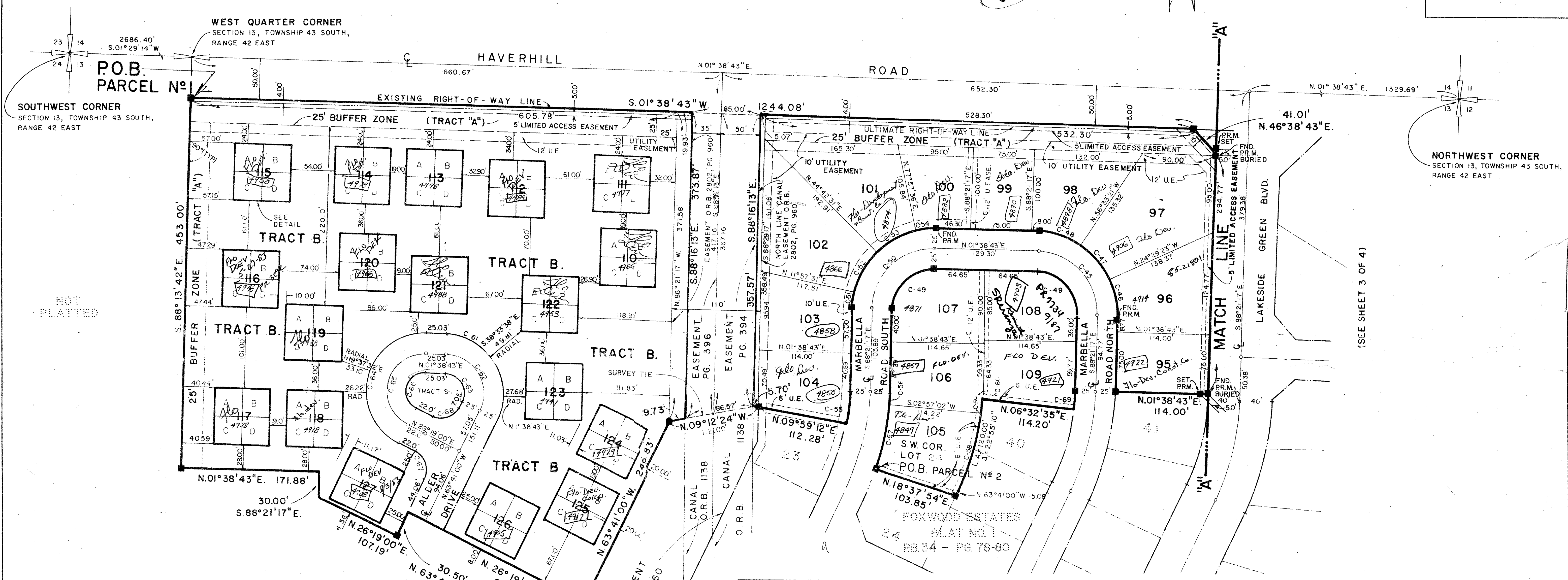
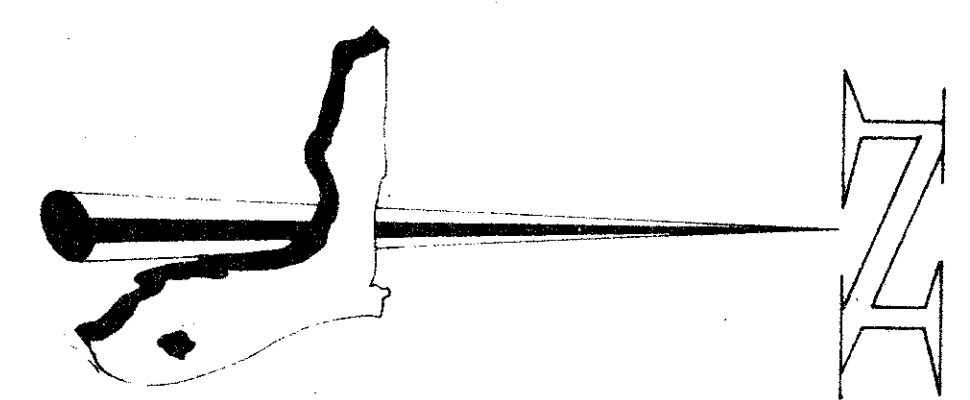


FOXWOOD ESTATES PLAT NO. 2

OF LAKESIDE GREEN (A PLANNED UNIT DEVELOPMENT)

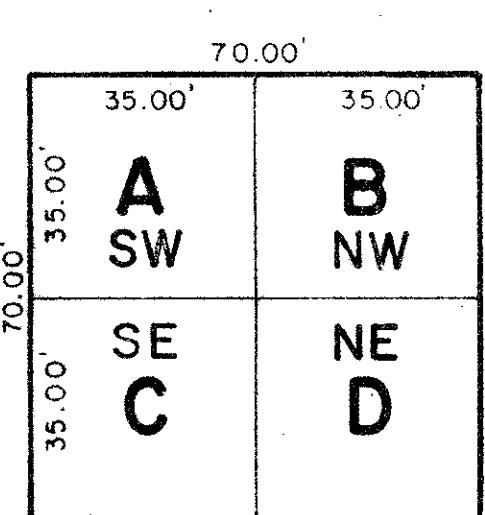
LYING IN SECTION 13, TOWNSHIP 43 SOUTH, RANGE 42 EAST
COUNTY OF PALM BEACH, STATE OF FLORIDA

85



NOT PLATTED

(SEE SHEET 3 OF 4)

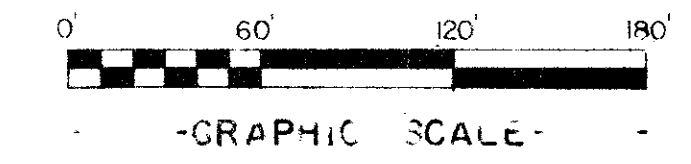


TYPICAL BLOCK DETAIL

FOXWOOD ESTATES
PLAT NO. 1
PB. 34 - PG. 78-80

- SURVEYOR'S NOTES:**
- DENOTES PERMANENT CONTROL POINTS (P.C.P.'s).
 - DENOTES PERMANENT REFERENCE MONUMENTS (P.R.M.'s).
 - THERE SHALL BE NO BUILDINGS OR STRUCTURES PLACED ON PUBLIC UTILITY EASEMENTS.
 - THERE SHALL BE NO BUILDINGS OF ANY KIND OR TREES OR SHRUBS PLACED ON DRAINAGE EASEMENTS.
 - BUILDING SETBACK LINES SHALL BE AS REQUIRED BY ORDINANCES OF PALM BEACH COUNTY, FLORIDA.
 - BEARING DATUM - THE WEST LINE OF THE NORTHWEST QUARTER OF SECTION 13, TOWNSHIP 43 SOUTH, RANGE 42 EAST, IS ASSUMED TO BEAR NORTH 01° 38' 43" EAST, AND ALL BEARINGS SHOWN HEREON ARE RELATIVE THERETO.

CURVE DATA			CURVE DATA		
C-NO	CENTRAL ANGLE	RADIUS	C-NO	CENTRAL ANGLE	RADIUS
1	25°40'17"	300.00'	35	90°00'00"	50.00'
2	24°40'17"	300.00'	36	90°00'00"	50.00'
3	18°56'31"	260.00'	37	90°00'00"	75.00'
4	05°43'46"	260.00'	38	08°37'34"	100.00'
5	08°23'47"	100.00'	39	55°21'07"	100.00'
6	32°08'10"	100.00'	40	10°05'58"	340.00'
7	30°49'06"	100.00'	41	12°24'18"	340.00'
8	32°23'43"	100.00'	42	02°10'01"	340.00'
9	10°53'31"	100.00'	43	09°33'49"	90.00'
10	114°40'17"	150.10'	44	15°09'28"	90.00'
11	114°40'17"	50.00'	45	90°00'00"	75.00'
12	155°19'43"	50.00'	46	26°08'06"	100.00'
13	155°19'43"	75.00'	47	32°03'58"	100.00'
14	45°50'12"	100.00'	48	31°47'56"	100.00'
15	50°09'22"	100.00'	49	90°00'00"	50.00'
16	NO CURVE ASSIGNED		50	90°00'00"	75.00'
17	24°48'17"	250.00'	51	10°18'48"	100.00'
18	90°00'00"	117.81'	52	32°45'00"	100.00'
19	03°11'05"	225.00'	53	33°15'05"	100.00'
20	21°29'12"	225.00'	54	13°41'07"	100.00'
21	09°45'57"	100.00'	55	08°20'29"	275.00'
22	34°11'38"	100.00'	56	02°33'23"	325.00'
23	33°31'57"	100.00'	57	14°25'48"	325.00'
24	12°30'28"	100.00'	58	20°31'55"	300.00'
25	15°49'36"	275.00'	59	04°08'22"	300.00'
26	08°50'41"	275.00'	60	01°45'07"	300.00'
27	90°00'00"	50.00'	61	114°40'17"	73.78'
28	70°31'44"	25.00'	62	114°40'17"	48.78'
29	160°31'44"	50.00'	63	114°40'17"	23.78'
30	90°00'00"	50.00'	64	155°19'43"	72.64'
31	90°00'00"	75.00'	65	155°19'43"	47.64'
32	27°41'58"	100.00'	66	155°19'43"	22.64'
33	30°42'32"	100.00'	67	90°00'00"	25.00'
34	31°35'30"	100.00'	68	90°00'00"	25.00'



0265-300

TURNOUT REQUIRED S.F.D. only
Flood Hazard No

THIS INSTRUMENT WAS PREPARED BY JORGE PERDOMO IN THE OFFICES OF FLORIDA SURVEYING & MAPPING, INC., 941 NORTH MILITARY TRAIL, WEST PALM BEACH, FLORIDA, 33406

13/43/42
SHEET 4 OF 4

FLORIDA SURVEYING & MAPPING, INC.
REGISTERED LAND SURVEYORS
WEST PALM BEACH, FLORIDA 33401

36/85

FOXWOOD ESTATES PLAT NO. 2 177-162

Foxwood Estates Plat #2 PUD