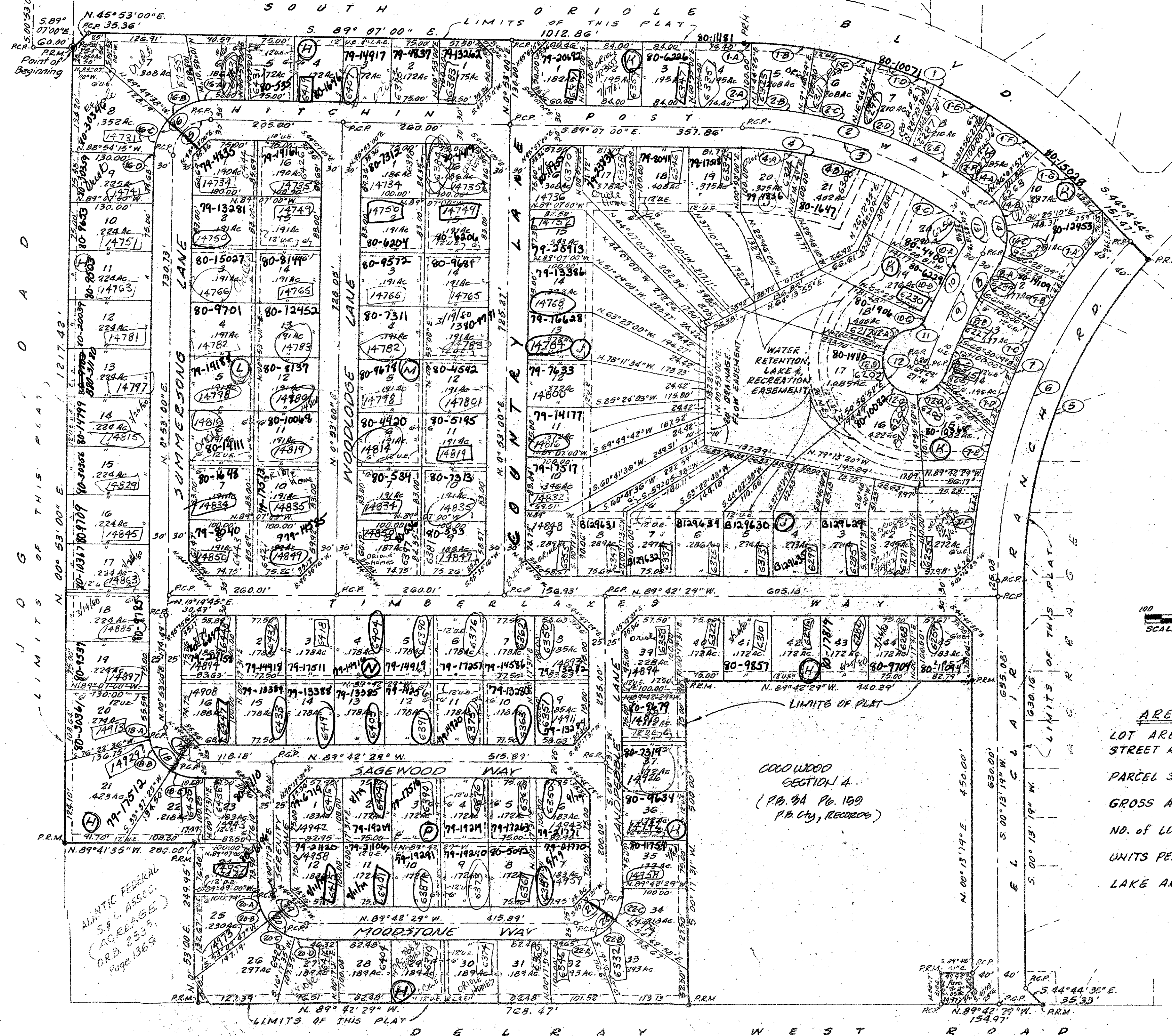


COCO WOOD LAKES - SECTION 2

A SUBDIVISION OF A PORTION OF
SECTION 15, TOWNSHIP 46 SOUTH, RANGE 42 EAST
PALM BEACH COUNTY, FLORIDA

Center Section
15-46-42

COUNTRY LANE ESTATES
R.B. 32 Page 104



CURVE DATA			
(NO)	RADIUS	DELTA	ARC
1	742.06'	44°52'16"	581.14'
1-A	742.06'	0°51'25"	11.10'
1-B	742.06'	7°30'05"	97.15'
1-C	742.06'	7°30'05"	97.15'
1-D	742.06'	7°39'27"	78.31'
1-E	742.06'	7°35'27"	98.31'
1-F	742.06'	7°09'45"	92.76'
1-G	742.06'	6°40'04"	86.36'
2	642.06'	35°50'42"	401.68'
2-A	642.06'	0°51'25"	9.60'
2-B	642.06'	7°30'05"	84.06'
2-C	642.06'	7°30'05"	84.06'
2-D	642.06'	7°35'27"	85.06'
2-E	642.06'	7°35'27"	85.06'
2-F	642.06'	4°48'15"	53.88'
3	612.06'	35°50'42"	382.91'
4	582.06'	35°50'42"	364.14'
4-A	582.06'	9°21'49"	95.12'
4-B	582.06'	14°05'11"	143.10'
4-C	582.06'	12°29'42"	125.92'
5	732.40'	42°25'07"	545.19'
6	776.40'	42°34'46"	576.96'
7	816.40'	39°03'38"	556.54'
7-A	816.40'	6°56'07"	98.82'
7-B	816.40'	5°44'20"	81.77'
7-C	816.40'	5°09'17"	73.45'
7-D	816.40'	7°11'43"	102.52'
7-E	816.40'	5°51'03"	83.37'
7-F	816.40'	8°11'02"	116.61'
8	916.40'	11°51'20"	129.62'
8-A	916.40'	3°42'55"	59.22'
8-B	916.40'	5°09'17"	82.44'
8-C	916.40'	2°59'09"	47.75'
9	946.40'	11°51'20"	129.62'
10	976.40'	7°59'28"	136.18'
10-A	976.40'	3°30'44"	59.85'
10-B	976.40'	4°16'59"	72.99'
10-C	976.40'	0°11'45"	3.34'
11	25.00'	60°15'28"	26.29'
12	50.00'	24°08'27"	23.05'
12-A	50.00'	6°23'58"	58.96'
12-B	50.00'	5°45'12"	48.99'
12-C	50.00'	55°47'42"	48.69'
12-D	50.00'	43°09'09"	37.66'
12-E	50.00'	21°29'28"	18.75'
13	55.00'	85°38'11"	82.20'
14	85.00'	85°38'11"	127.04'
14-A	85.00'	9°24'15"	13.95'
14-B	85.00'	34°17'13"	50.87'
14-C	85.00'	39°26'41"	48.12'
14-D	85.00'	8°50'02"	13.11'
15	55.00'	90°0'0"	86.39'
16	85.00'	90°0'0"	133.52'
16-A	85.00'	11°32'01"	17.26'
16-B	85.00'	39°09'37"	51.97'
16-C	85.00'	39°04'37"	57.97'
16-D	85.00'	0°12'45"	0.32'
17	50.00'	70°35'29"	79.06'
18	75.00'	70°35'29"	118.58'
18-A	75.00'	14°30'24"	18.99'
18-B	75.00'	42°45'13"	55.96'
18-C	75.00'	33°19'52"	43.63'
19	50.00'	90°0'0"	78.54'
20	75.00'	90°0'0"	117.81'
20-A	75.00'	0°28'31"	0.62'
20-B	75.00'	36°39'13"	47.92'
20-C	75.00'	36°52'12"	48.22'
20-D	75.00'	16°00'14"	20.95'
21	50.00'	90°0'0"	78.54'
22	75.00'	90°0'0"	117.81'
22-A	75.00'	19°28'13"	25.49'
22-B	75.00'	35°32'16"	46.52'
22-C	75.00'	34°29'31"	45.80'

AREA TABULATIONS

LOT AREA	33,190 R.C. (INCLUDES WATER RETENTION, LAKE & RECREATION EASEMENT)
STREET AREA	11,700 R.C.
PARCEL S-14-5-2	.100 R.C.
GROSS AREA	44,990 R.C.
NO. OF LOTS	146 (Single Family D.U.)
UNITS PER GROSS AREA	3.24
LAKE AREA	4,657 R.C.

ALANTIC FEDERAL
S.F. L. ASSOC.
D.R.A. 2533
PAGE 1363

COCO WOOD
SECTION A.
(P.B. 34 P.B. 169
P.B. City, Records)

Coco Wood Lakes Section 2

1000-100
15/46/42
36/89-90
36/90