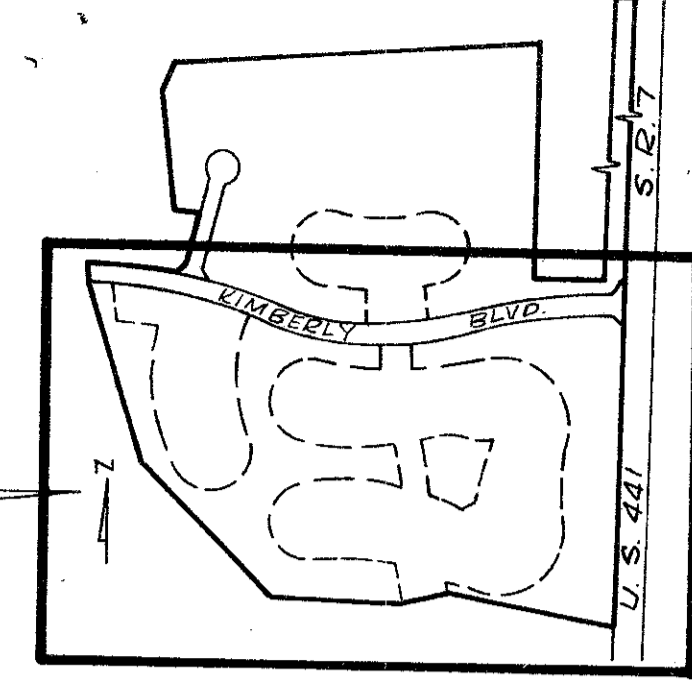
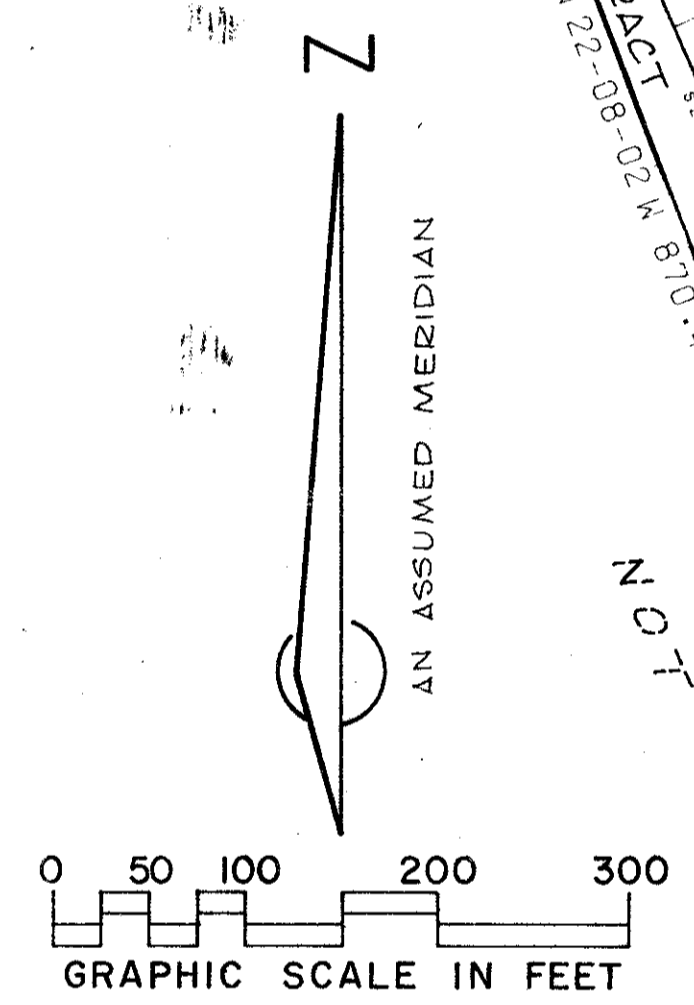
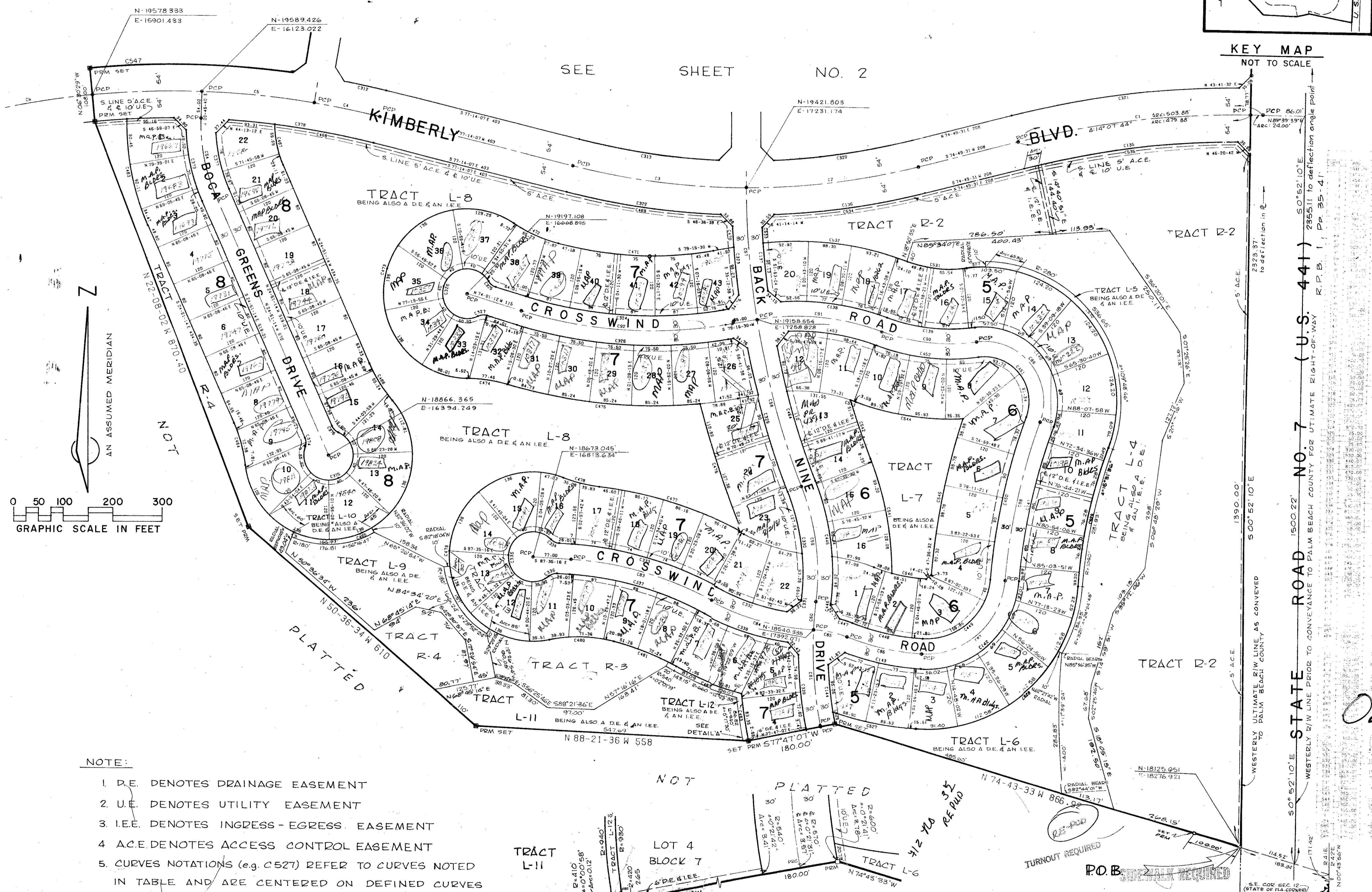


A PLANNED UNIT DEVELOPMENT
BOCA GREENS PLAT NO. I
 IN 3 SHEETS SHEET NO. 3

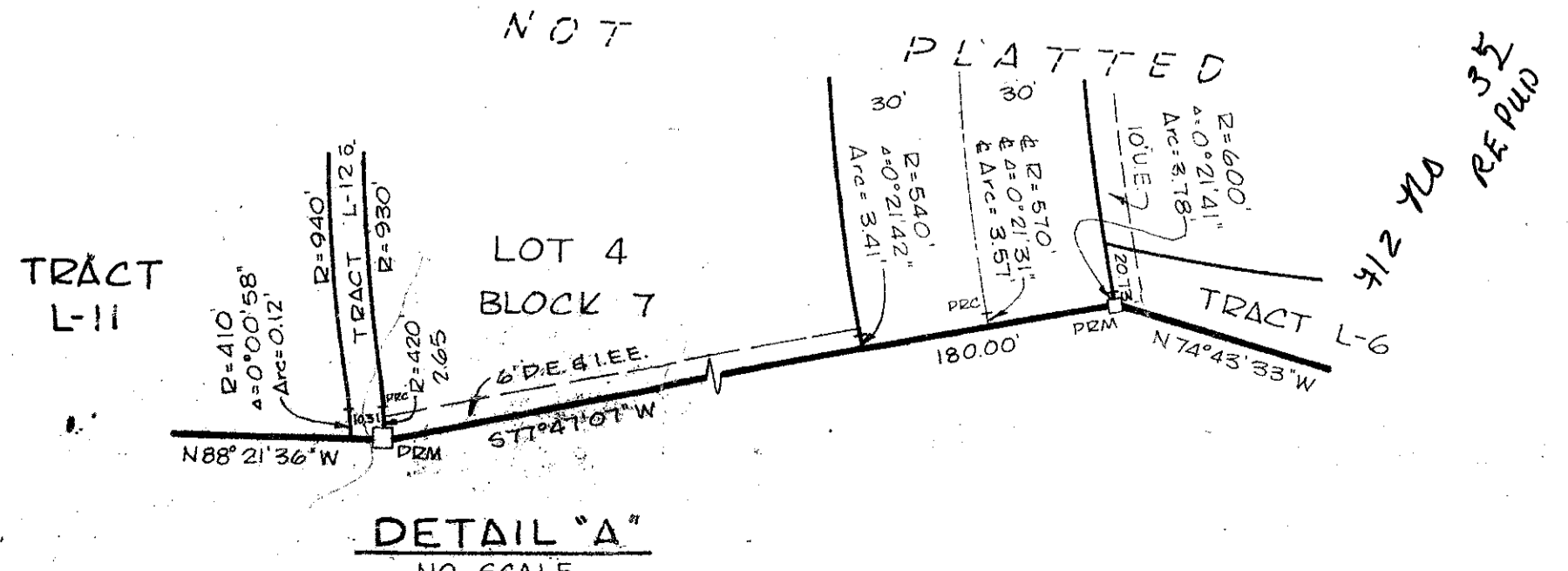
SHEET 3



134



- NOTE:
1. D.E. DENOTES DRAINAGE EASEMENT
 2. U.E. DENOTES UTILITY EASEMENT
 3. I.E.E. DENOTES INGRESS - EGRESS EASEMENT
 4. A.C.E. DENOTES ACCESS CONTROL EASEMENT
 5. CURVES NOTATIONS (e.g. C527) REFER TO CURVES NOTED IN TABLE AND ARE CENTERED ON DEFINED CURVES



STATE ROAD 1500'22" (U.S. 441) 295511 to deflection angle point
 WESTERLY 21/4" LINE PRIOR TO CONVEYANCE TO PALM BEACH COUNTY FOR ULTIMATE RIGHT-OF-WAY R.P.B. 1, PP. 35-41
 WESTERLY 1390.00' 500'52"10'E
 WESTERLY ULTIMATE 21/4" LINE AS CONVEYED TO PALM BEACH COUNTY
 500'52"10'E
 1390.00'

0208-000

68

36/124

Field Book No. D-75 Pg. 2d	ROBERT E. OWEN & ASSOCIATES, INC. ENGINEERS · PLANNERS · SURVEYORS WEST PALM BEACH FLORIDA	Job No. 77-0344
Design D.M. WHITE		Scale 1" = 100'
Drawn MAR/COM/CG		Date JULY, 1977
Checked D.M. White		Sheet 3
Field & DIEMER		BF-2259

BOCA GREENS PLAT NO. I

IN 3 SHEETS SHEET NO. 3

Boca Greens Plat No. I
 D-3585-01 W&S DEVELOPMENT PLANS D-3585-01B P&D