

A PLANNED UNIT DEVELOPMENT  
**PLAT 2, HAMLET "C" AT BOCA WEST**

LYING IN PART OF SECTION 9 TOWNSHIP 47 SOUTH  
 RANGE 42 EAST, PALM BEACH COUNTY, FLORIDA.

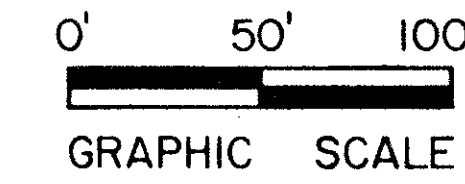
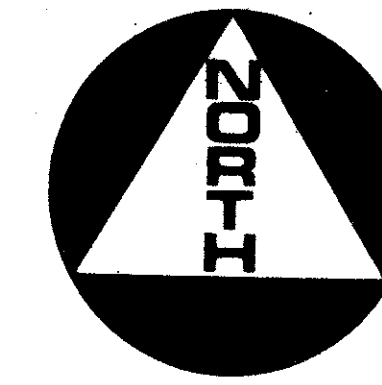
128

STATE OF FLORIDA  
 COUNTY OF PALM BEACH

THIS PLAT WAS FILED FOR  
 RECORD AT \_\_\_\_\_ M.  
 THIS \_\_\_\_\_ DAY OF \_\_\_\_\_  
 A.D., AND DULY RE-  
 CORDED IN PLAT BOOK \_\_\_\_\_  
 ON PAGES \_\_\_\_\_ AND \_\_\_\_\_.

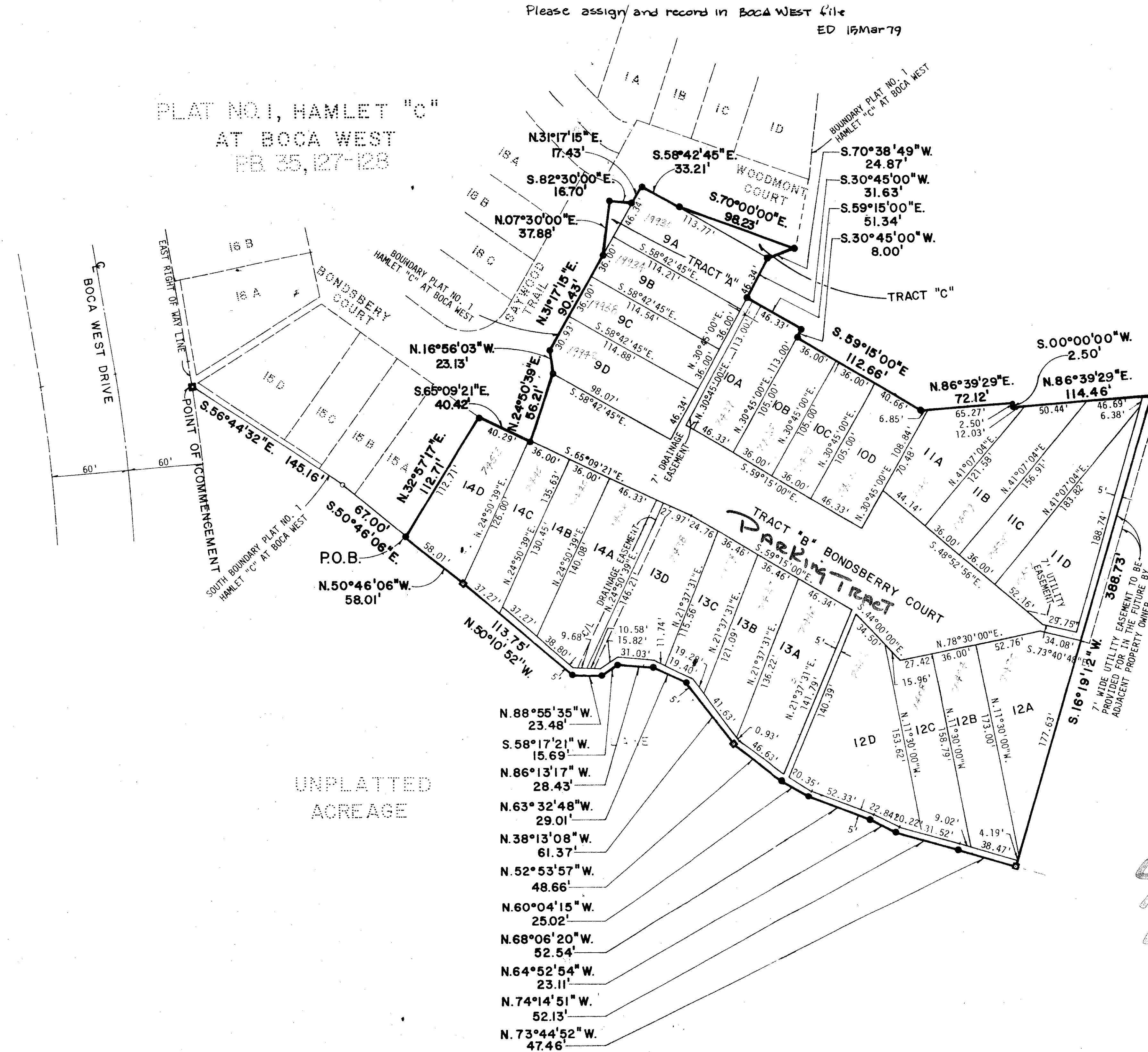
JOHN B. DUNKLE, CLERK  
 CIRCUIT COURT

BY: \_\_\_\_\_ DC



Please assign and record in Boca West file  
 ED 15 Mar 79

PLAT NO. 1, HAMLET "C"  
 AT BOCA WEST  
 PB 35, 127-128

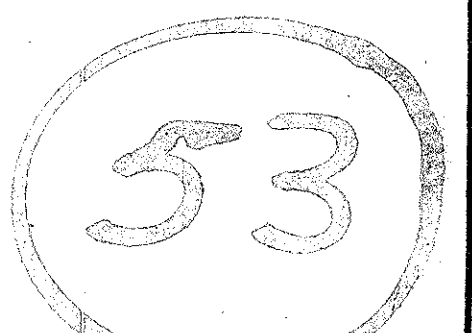


UNPLATTED  
 ACREAGE

UNPLATTED  
 ACREAGE

- N. 88°55'35" W. 23.48'
- S. 58°17'21" W. 15.69'
- N. 86°13'17" W. 28.43'
- N. 63°32'48" W. 29.01'
- N. 38°13'08" W. 61.37'
- N. 52°53'57" W. 48.66'
- N. 60°04'15" W. 25.02'
- N. 68°06'20" W. 52.54'
- N. 64°52'54" W. 23.11'
- N. 74°14'51" W. 52.13'
- N. 73°44'52" W. 47.46'

9/47/42  
 0214-309  
 36/128



**BENCH MARK**  
 land surveying and mapping, inc.

CONRAD W. SCHAEFER CONSULTING ENGINEERS, INC.  
 PALM BEACH COUNTY, FLORIDA

PLAT 2, HAMLET "C" AT BOCA WEST

| DESIGNED | DRAWN    | CHECKED  | JOB NO.  | DRAWING NO. |
|----------|----------|----------|----------|-------------|
| CWS      | TAL      | RJW      | 4800     |             |
| DATE     | SCALE    | APPROVED | FILE NO. | SHEET OF    |
| CWS      | 1" = 50' |          |          | 2 OF 2      |

Plat 2, Hamlet "C" Boca West PUD