

WOODED ACRES

A SUBDIVISION IN THE NORTHWEST QUARTER (NW1/4) OF SECTION 35, T 43 S, R 42 E, PALM BEACH COUNTY, FLORIDA.
 BEING A REPLAT OF TRACTS 41, 42, 43 AND THE SOUTH 1/2 OF TRACT 44, LESS THE NORTH 100 FEET
 THEREOF AND PART OF TRACTS 44 THRU 48, ALL IN MODEL LAND COMPANY SUBDIVISION. (PLAT BOOK
 5, PAGE 77)

140

IN 2 SHEETS
 SHEET 2 OF 2

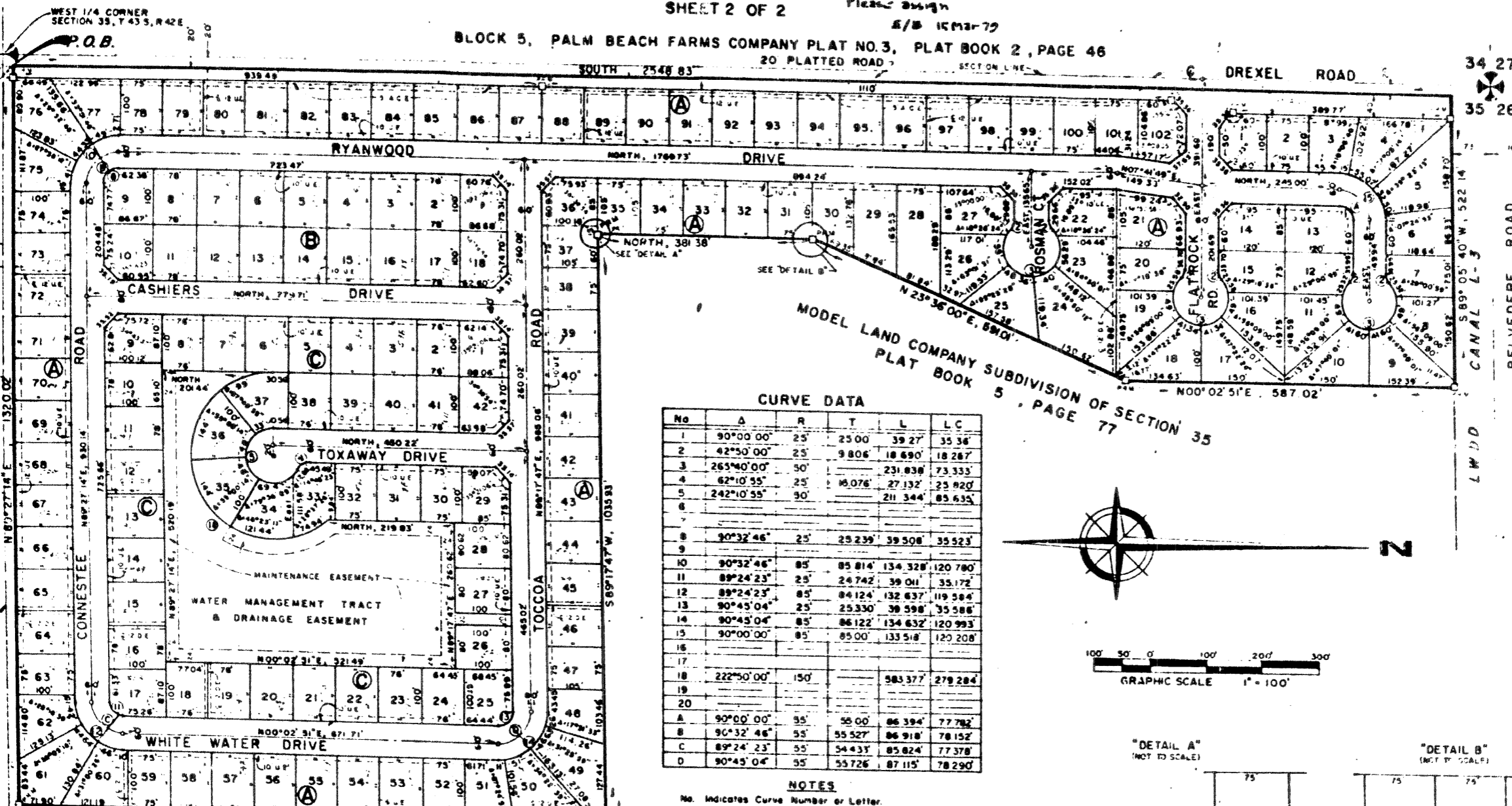
Please assign
 E/B 15 MAR 79

BLOCK 5, PALM BEACH FARMS COMPANY PLAT NO. 3, PLAT BOOK 2, PAGE 46
 20 PLATTED ROAD

ROYAL PALM ESTATES
 PLAT BOOK 23, PAGE 136

ROYAL PALM ESTATES
 PLAT BOOK 23, PAGE 20

WYNNEWOOD
 ACRES
 PLAT BOOK 26, PAGE 128

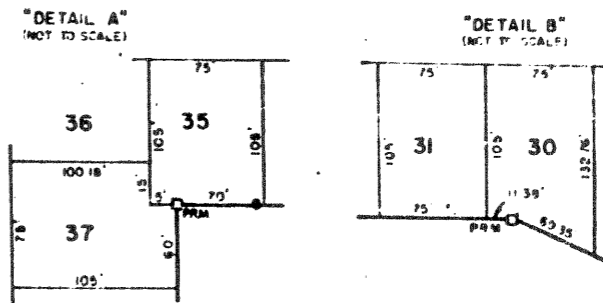
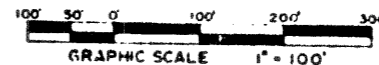


CURVE DATA

No	Δ	R	T	L	LC
1	90°00'00"	25'	25.00'	39.27'	35.36'
2	42°50'00"	25'	9.806'	18.690'	18.287'
3	263°40'00"	50'	231.838'	73.333'	73.333'
4	62°10'55"	25'	16.076'	27.132'	25.820'
5	242°10'55"	30'	211.344'	85.635'	85.635'
6					
7					
8	90°32'46"	25'	25.239'	39.508'	35.523'
9					
10	90°32'46"	85'	85.814'	134.328'	120.780'
11	89°24'23"	25'	24.742'	39.011'	35.172'
12	89°24'23"	85'	84.124'	132.637'	119.584'
13	90°45'04"	25'	25.330'	38.598'	35.588'
14	90°45'04"	85'	86.122'	134.632'	120.993'
15	90°00'00"	85'	85.00'	133.518'	120.208'
16					
17					
18	222°50'00"	150'	583.377'	279.284'	279.284'
19					
20					
A	90°00'00"	35'	55.00'	86.394'	77.782'
B	90°32'46"	55'	55.527'	86.918'	78.152'
C	89°24'23"	55'	54.433'	85.824'	77.378'
D	90°45'04"	55'	55.726'	87.115'	78.290'

NOTES

- No. Indicates Curve Number or Letter.
 - Δ Central Angle of Curve or Arc.
 - R Radius of Curve
 - T Length of Tangent
 - L Length of Curve
 - LC Long Chord of Curve from PC to PT
 - DE Drainage Easement
 - UE Utility Easement
 - ACE Access Easement
 - PRM Denotes Permanent Reference Monument (P.R.M.'s)
 - PCP Denotes Permanent Control Point (P.C.P.'s)
- All side lot lines are perpendicular or radial to the street Right of Way line, except as noted.
- Bearings are in a meridian assuming north along the western line of section 35.



PROJ# 1000-090

4th ADDITION TO PLAT OF
 LAKE BELVEDERE ESTATES
 PLAT BOOK 27, PAGE 9

2nd ADDITION TO PLAT OF
 LAKE BELVEDERE ESTATES
 PLAT BOOK 26, PAGE 139

Field Book No. Pg.	ROBERT E. OWEN & ASSOCIATES, INC. ENGINEERS PLANNERS SURVEYORS WEST PALM BEACH FLORIDA	WOODED ACRES PALM BEACH COUNTY, FLORIDA	78-1055
Design C. GIVENS			1" = 100'
Drawn C. GIVENS			JUNE, 1978
Checked			2 2
			BF 2278