

# PLAT NO. 2 Century Village West

SHEET 2 OF 7 SHEETS

WEIMER AND COMPANY

BLOCK NO. 5

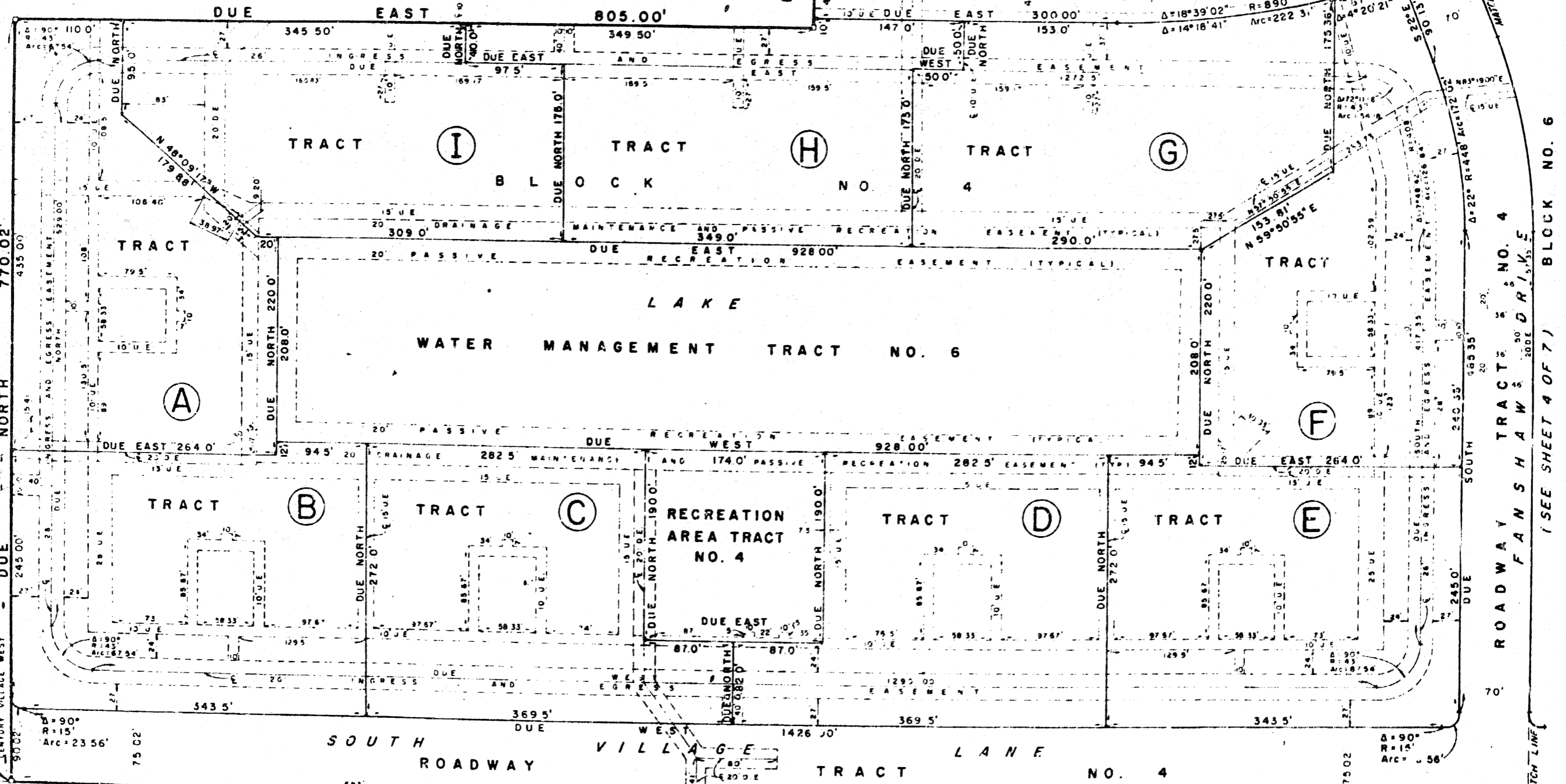
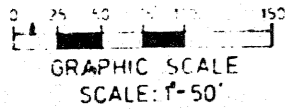
(SEE SHEET 3 OF 7)

0221-303

36.  
149

planners • land surveyors • engineers  
land development consultants

PLAT NO. 1 CENTURY VILLAGE WEST - P.B. 35 PGS 80-85



ROADWAY TRACT NO. 4  
FANSHAW DRIVE  
BLOCK NO. 6  
(SEE SHEET 4 OF 7)