

LUCERNE LAKES HOMES

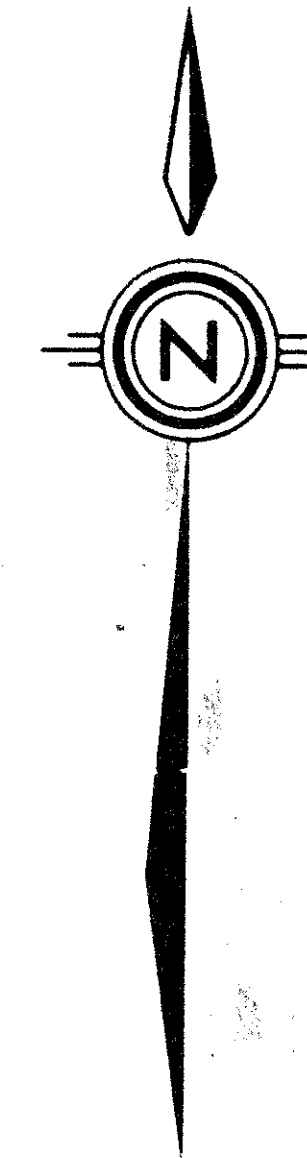
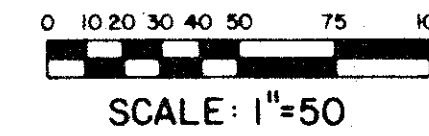
VILLAGE II FIRST ADDITION

A PORTION OF LUCERNE LAKES PLANNED UNIT DEVELOPMENT
 BEING A REPLAT OF A PORTION OF BLOCK 29 OF
 PALM BEACH FARMS COMPANY, PLAT NO. 3 PLAT
 BOOK 2, PAGES 45 THRU 54, PUBLIC RECORDS OF
 PALM BEACH COUNTY, FLORIDA, BEING IN SECTION
 28, TWP. 44S., RGE. 42E., PALM BEACH COUNTY,
 FLORIDA.

SHEET 2 OF 2

186

STATE OF FLORIDA
 COUNTY OF PALM BEACH
 THIS PLAT WAS FILED FOR
 RECORD AT
 THIS DAY OF
 AD. 1979 AND DULY RECORDED
 IN PLAT BOOK ON PAGES
 AND
 JOHN B. DUNKLE, CLERK
 CIRCUIT COURT
 BY: DC



(TANGENT TABLE - "T" NO.S)

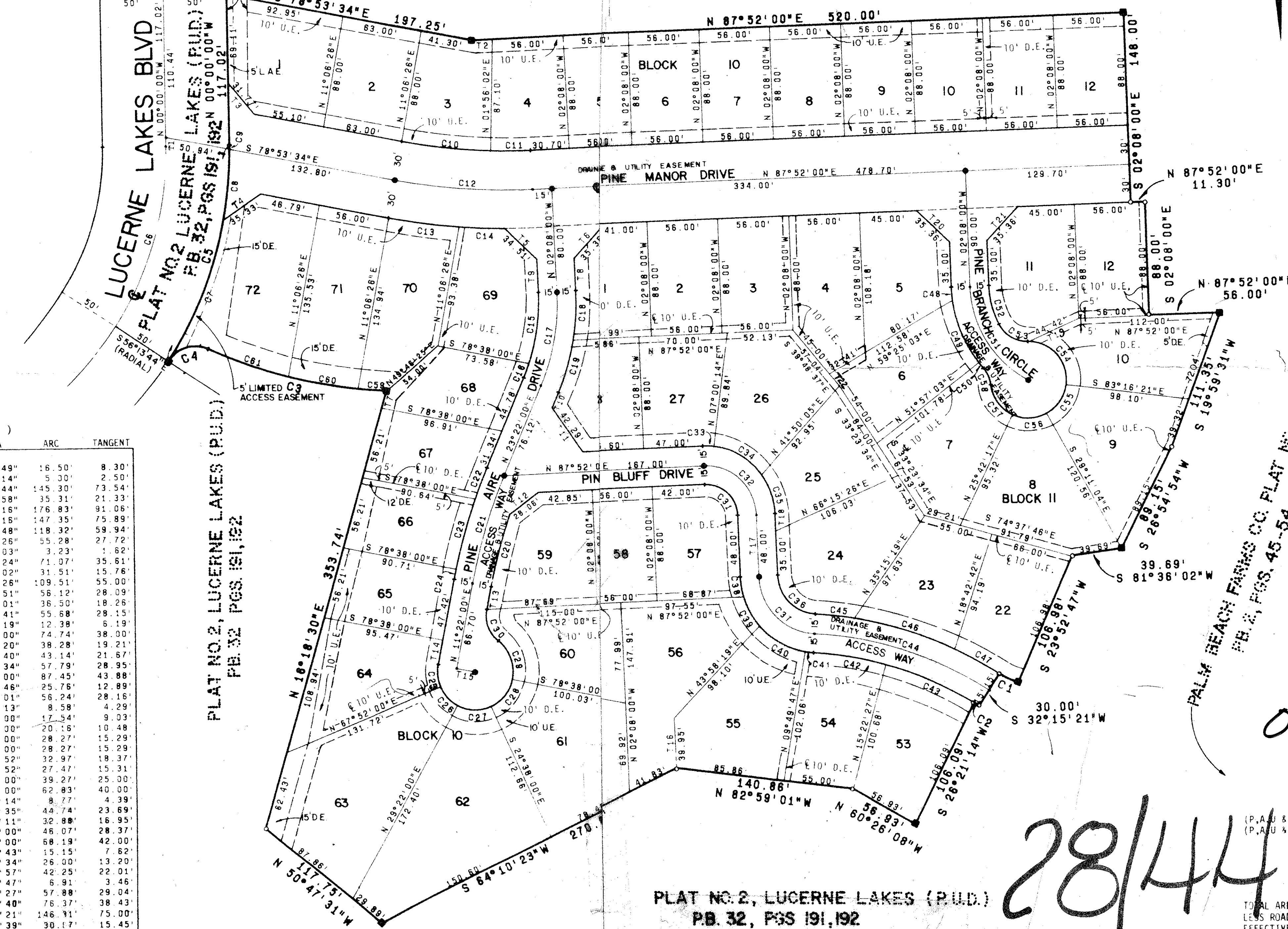
NO.	BEARING	DIST.
1	N 00°00'00"W	6.58'
2	N 87°52'00"E	16.00'
3	S 39°26'47"E	31.77'
4	N 56°08'27"E	35.33'
5	S 45°46'43"E	34.51'
6	N 42°52'00"E	35.38'
7	N 18°18'30"E	13.74'
8	N 02°08'00"W	25.00'
9	N 02°08'00"W	25.59'
10	N 23°22'00"E	12.72'
11	S 34°23'00"E	42.29'
12	N 53°43'47"E	28.08'
13	N 11°22'00"E	17.71'
14	N 11°22'00"E	19.20'
15	S 78°38'00"E	15.00'
16	N 02°08'00"W	39.95'
17	N 02°08'00"W	48.00'
18	N 02°08'00"W	13.00'
19	N 52°21'19"E	44.42'
20	S 47°08'00"E	35.36'
21	N 42°52'00"E	35.36'
22	S 39°48'37"E	12.04'

(CURVE TABLE - "C" NO.S)

NO.	CH. BRNG.	CHORD	RADIUS	DELTA	ARC	TANGENT
1	S 65°31'33"E	16.45'	60.74'	15°33'49"	16.50'	8.30'
2	S 58°15'46"E	5.00'	276.16'	01°02'14"	5.30'	2.50'
3	S 76°10'08"E	144.43'	382.85'	21°44'44"	145.30'	73.54'
4	N 74°14'15"E	32.45'	25.00'	80°25'58"	35.31'	21.33'
5	N 18°53'08"E	174.28'	300.00'	33°48'18"	176.15'	91.06'
6	N 18°53'08"E	174.28'	250.00'	33°48'18"	147.35'	75.89'
7	N 22°28'22"E	117.55'	300.00'	22°35'48"	118.32'	59.94'
8	N 05°53'45"E	55.20'	300.00'	10°33'26"	55.28'	27.72'
9	N 00°18'31"E	3.23'	300.00'	00°37'03"	3.23'	1.62'
10	N 83°28'46"E	70.99'	443.88'	09°10'24"	71.07'	35.61'
11	N 89°54'01"E	31.50'	443.88'	04°04'02"	31.51'	15.76'
12	N 85°30'47"E	109.27'	473.88'	13°14'28"	109.51'	55.06'
13	N 82°15'00"E	36.09'	503.88'	06°22'51"	36.12'	28.09'
14	N 87°20'58"E	36.09'	503.88'	04°09'01"	36.50'	18.26'
15	N 08°17'51"E	55.38'	152.94'	20°51'41"	55.68'	28.15'
16	N 21°02'51"E	12.38'	152.94'	04°38'19"	12.38'	6.19'
17	N 10°37'00"E	74.13'	167.94'	25°30'00"	74.74'	38.00'
18	N 03°51'40"E	38.21'	182.94'	11°59'20"	38.28'	19.21'
19	N 16°36'40"E	43.04'	182.94'	15°30'40"	43.14'	21.69'
20	N 15°28'47"E	57.74'	402.52'	08°13'34"	57.79'	28.95'
21	N 17°22'00"E	87.29'	417.52'	12°00'00"	87.45'	43.88'
22	N 21°39'37"E	25.76'	432.52'	03°24'46"	25.76'	12.89'
23	N 16°13'43"E	56.20'	432.52'	07°27'01"	56.24'	28.16'
24	N 11°56'06"E	8.58'	432.52'	01°08'13"	8.58'	4.29'
25	S 05°23'00"E	17.29'	30.00'	33°30'00"	17.54'	9.03'
26	S 41°23'00"E	19.78'	30.00'	38°30'30"	20.16'	10.48'
27	S 89°38'00"E	27.24'	30.00'	54°00'00"	28.27'	15.29'
28	N 38°22'00"E	27.24'	30.00'	54°00'00"	28.27'	15.29'
29	S 20°05'56"E	31.33'	30.00'	62°57'52"	32.97'	18.37'
30	S 20°05'56"E	26.11'	25.00'	62°57'52"	27.47'	15.31'
31	S 47°08'00"E	35.36'	25.00'	90°00'00"	39.27'	25.00'
32	S 47°08'00"E	56.57'	40.00'	90°00'00"	62.89'	40.00'
33	S 87°33'53"E	8.76'	55.00'	09°08'14"	8.77'	4.39'
34	S 59°41'29"E	43.52'	55.00'	46°36'55"	46.74'	23.69'
35	N 19°15'38"E	32.39'	55.00'	34°15'11"	32.88'	16.95'
36	S 44°23'00"E	42.01'	31.24'	84°30'00"	46.07'	28.37'
37	S 44°23'00"E	62.18'	46.24'	84°30'00"	68.19'	42.00'
38	S 08°13'21"E	15.12'	61.24'	14°10'43"	15.15'	7.62'
39	S 28°28'30"E	25.81'	61.24'	24°19'34"	26.00'	13.20'
40	S 60°24'15"E	41.42'	61.24'	39°31'57"	42.25'	22.01'
41	S 89°24'07"E	6.50'	6.50'	05°38'21"	10.00'	5.00'
42	S 80°37'48"E	57.77'	276.16'	12°00'27"	57.88'	29.04'
43	S 66°42'13"E	76.13'	276.16'	15°50'40"	76.37'	38.43'
44	S 72°11'19"E	145.26'	291.16'	28°53'21"	146.11'	75.00'
45	S 83°44'41"E	30.86'	306.16'	05°46'39"	30.17'	15.45'
46	S 73°05'23"E	82.75'	306.16'	15°31'58"	83.03'	41.76'
47	S 61°32'01"E	40.47'	306.16'	07°34'45"	40.51'	20.28'
48	S 04°57'11"E	10.00'	101.80'	05°38'21"	10.00'	5.00'
49	N 22°54'39"E	53.07'	101.60'	30°18'36"	53.69'	27.49'
50	S 39°42'24"E	5.88'	101.60'	03°18'53"	5.88'	2.94'
51	S 32°08'00"E	86.60'	86.60'	60°00'00"	90.69'	50.00'
52	S 14°50'59"E	31.52'	71.80'	25°25'57"	31.70'	16.18'
53	S 59°13'00"E	28.24'	25.00'	83°18'06"	27.62'	15.41'
54	S 42°04'12"E	45.14'	30.00'	89°35'42"	51.10'	34.27'
55	N 33°46'18"E	27.28'	30.00'	54°00'00"	28.74'	15.31'
56	S 11°51'00"E	57.00'	56.56'	56°56'26"	62.70'	36.25'
57	S 23°23'33"E	4.59'	5.00'	33°56'33"	4.81'	2.41'
58	S 81°21'53"E	2.85'	2.85'	03°22'14"	3.24'	1.61'
59	S 72°29'37"E	5.00'	2.85'	08°22'19"	5.05'	2.58'
60	S 11°51'00"E	7.16'	2.85'	10°37'06"	7.51'	3.76'

POINT OF BEGINNING
 S.E. CORNER TRACT "A" PLAT
 NO. 1, LUCERNE LAKES (PUD.)

PLAT NO. 1, LUCERNE LAKES (P.U.D.)
 P.B. 30, PAGES 41, 42



PLAT NO. 2, LUCERNE LAKES (P.U.D.)
 P.B. 32, PAGES 191, 192

PLAT NO. 2, LUCERNE LAKES (P.U.D.)
 P.B. 32, PAGES 191, 192

PALM BEACH FARMS CO. PLAT NO. 3
 P.B. 2, PAGES 45-54

0277-306

48

28/44/42

ACREAGE SUMMARY

(P.A.U. & D.) ROAD RIGHT-OF-WAY	1.006 AC.
(P.A.U. & D.) ROADS	0.820 AC.
(S.S. 51)	7.608 AC.
TOTAL	9.434 AC.

PLANNED UNIT DEVELOPMENT DATA

TOTAL AREA THIS PLAT	9.434 AC.
LESS ROAD RIGHT-OF-WAY	1.006 AC.
EFFECTIVE BASE RESIDENTIAL AREA	8.428 AC.

TOTAL UNITS THIS PLAT
 OPEN SPACE THIS PLAT
 DENSITY

36/156
 36/156

EDM EDM SURVEYING & MAPPING INC.
 1000 PALM BEACH BOULEVARD
 SUITE 100 WEST PALM BEACH, FL 33409

DATE: 06/15/79
 SCALE: 1"=50'
 DRAWN: JCS
 CHECKED: RCF
 FIELD BOOK NO. PL. DRAWING NO.

PLAT NO. 1
 LUCERNE LAKES HOMES
 VILLAGE II
 SHEET 2 OF 2

Lucerne Lakes Homes Village II 1st Addition