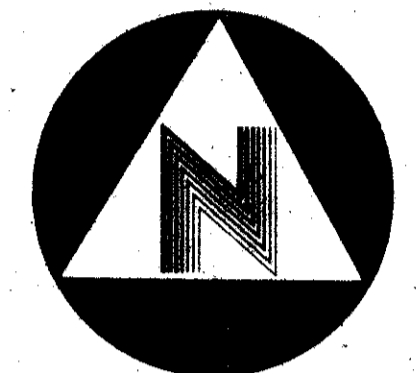


STATE OF FLORIDA
 COUNTY OF PALM BEACH
 THIS PLAT WAS FILED FOR
 RECORD AT _____ M.
 THIS DAY OF _____
 A.D., 1978 AND DULY RE-
 CORDED IN PLAT BOOK
 ON PAGES _____ AND _____
 JOHN B. DUNKLE, CLERK
 CIRCUIT COURT
 BY: _____ DC



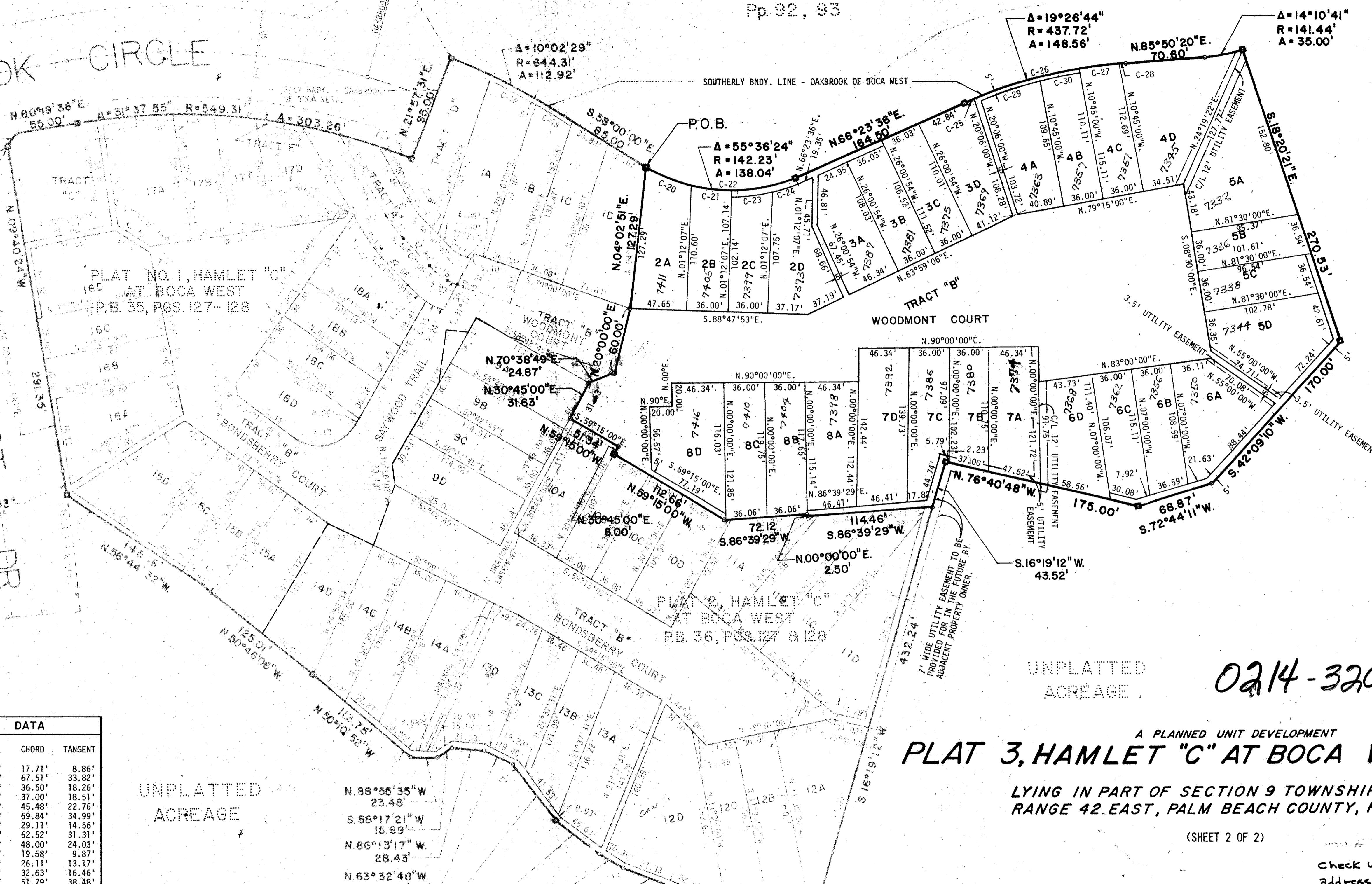
0' 50' 100'
 GRAPHIC SCALE

53

OAKBROOK OF BOCA WEST
 PB 32,
 P 02, 03

OAKBROOK CIRCLE

BOCA WEST DR



CURVE	DATA				
C. NO.	CENT. ANG.	RADIUS	ARC	CHORD	TANGENT
C-1	01°50'59"	549.31'	17.71'	17.71'	8.86'
C-2	07°02'44"	549.31'	67.55'	67.51'	33.82'
C-3	03°48'29"	549.31'	36.51'	36.50'	18.26'
C-4	03°51'35"	549.31'	37.01'	37.00'	18.51'
C-5	04°44'43"	549.31'	45.49'	45.48'	22.76'
C-6	07°17'21"	549.31'	69.88'	69.84'	34.99'
C-7	03°02'13"	549.31'	29.12'	29.11'	14.56'
C-8	06°35'04"	544.31'	62.55'	62.52'	31.31'
C-9	05°03'17"	544.31'	48.02'	48.00'	24.03'
C-10	15°00'00"	75.00'	19.63'	19.58'	9.87'
C-11	15°00'00"	100.00'	26.18'	26.11'	13.17'
C-12	15°00'00"	125.00'	32.72'	32.63'	16.46'
C-13	95°25'45"	35.00'	58.29'	51.79'	38.48'
C-14	16°08'36"	75.00'	21.13'	21.06'	10.64'
C-15	09°51'24"	75.00'	12.90'	12.89'	6.47'
C-16	26°00'00"	50.00'	22.69'	22.50'	11.54'
C-17	26°00'00"	25.00'	11.34'	11.25'	5.77'
C-18	04°11'27"	639.31'	46.76'	46.75'	23.39'
C-19	03°17'30"	639.31'	36.73'	36.72'	18.37'
C-20	18°00'23"	142.23'	44.70'	44.52'	22.54'
C-21	14°36'31"	142.23'	36.26'	36.17'	18.23'
C-22	22°59'30"	142.23'	57.07'	56.69'	28.93'
C-23	14°12'56"	147.23'	36.53'	36.44'	18.36'
C-24	08°50'17"	147.23'	22.71'	22.69'	11.38'
C-25	01°14'36"	437.72'	9.50'	9.50'	4.75'
C-26	13°05'53"	437.72'	100.06'	99.85'	50.25'
C-27	04°43'23"	437.72'	36.09'	36.08'	18.06'
C-28	00°22'48"	437.72'	2.90'	2.90'	1.45'
C-29	07°42'37"	432.72'	58.23'	58.19'	29.16'
C-30	04°46'07"	432.72'	36.01'	36.00'	18.02'

UNPLATTED
 ACREAGE

N. 88°56'35"W
 23.45'
 S. 58°17'21"W
 15.69'
 N. 86°13'17"W
 28.43'
 N. 63°32'48"W
 29.01'
 N. 38°18'08"W
 61.37'
 N. 52°52'57"W
 48.66'
 N. 60°04'15"W
 25.02'
 N. 68°06'20"W
 52.54'
 N. 64°52'54"W
 23.11'
 N. 74°14'51"W
 52.13'
 N. 73°44'52"W
 47.45'

UNPLATTED
 ACREAGE
 0214-320
 A PLANNED UNIT DEVELOPMENT
PLAT 3, HAMLET "C" AT BOCA WEST

LYING IN PART OF SECTION 9 TOWNSHIP 47 SOUTH
 RANGE 42 EAST, PALM BEACH COUNTY, FLORIDA.

(SHEET 2 OF 2)

Check w/ Boca West file before
 addressing, and reorganize file
 of Boca West the same as B.D.M
 + Indian Springs

9/47/42

A.D. 3/30/79

PUD

Hamlet "C" @ Boca West Plat 3

- NOTES:
- INDICATES A 4" x 4" PERMANENT REFERENCE MONUMENT, FLA. CERT. #2424.
 - INDICATES A PERMANENT CONTROL POINT, FLA. CERT. #2424.

BUILDING SET BACK LINES SHALL BE AS REQUIRED BY CURRENT PALM BEACH COUNTY ZONING
 REGULATIONS.
 THIS INSTRUMENT WAS PREPARED BY ROBERT J. WHITTON IN THE OFFICES OF BENCH MARK
 LAND SURVEYING AND MAPPING, INC., 300 PALM BEACH LAKES BLVD., WEST PALM BEACH,
 FLORIDA 33409, PHONE NO. 689-1111.

BENCH MARK
land surveying and mapping, inc.

CONR... CONSULTING ENGINEERS, INC.
 PALM BEACH COUNTY, FLORIDA

DESIGNED BY: [Signature]
 DATE: 4-17-78
 SCALE: 1" = 50'
 SHEET NO. 183 OF 2