

PLAT OF FAIRWAY PARK

A PORTION OF INDIAN SPRING A PLANNED UNIT DEVELOPMENT
A PARCEL OF LAND IN THE SOUTHWEST ONE-QUARTER
OF SECTION 35, TOWNSHIP 45 SOUTH, RANGE 42 EAST.
PALM BEACH COUNTY, FLORIDA

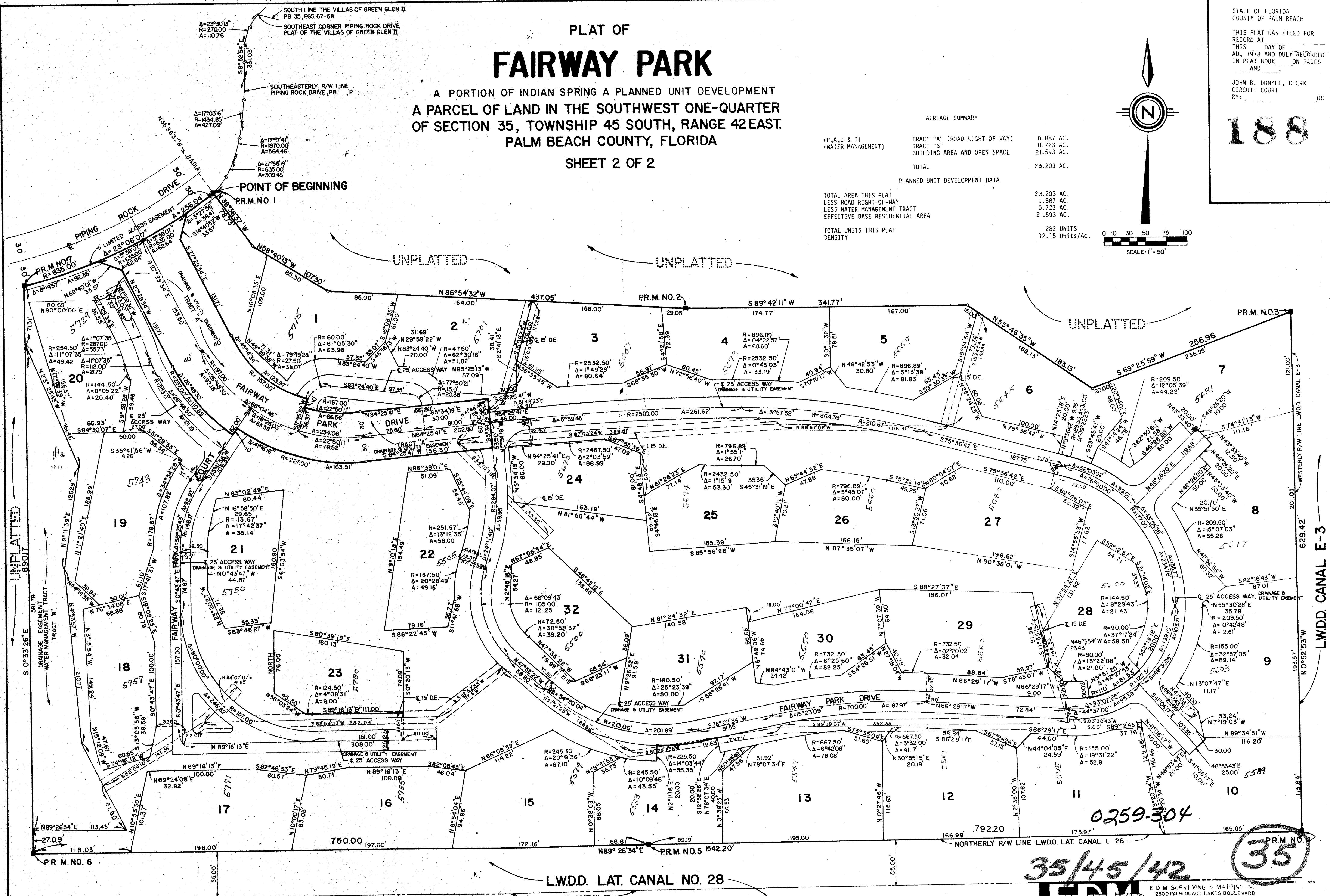
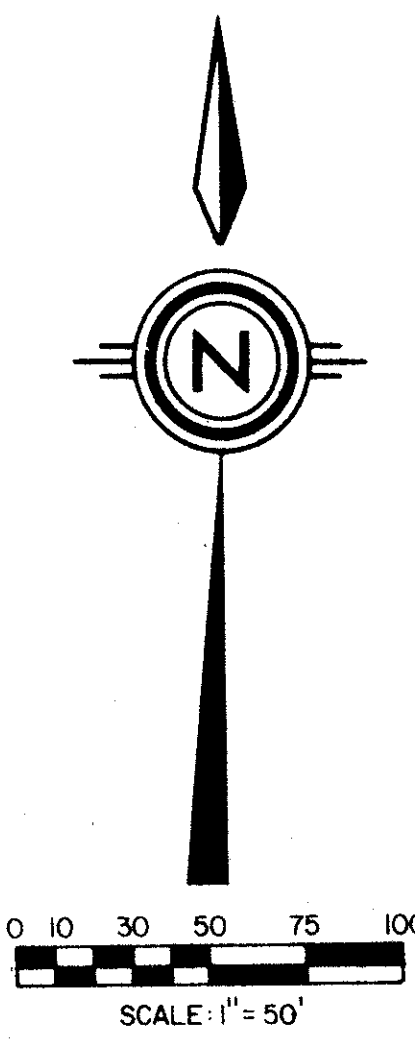
SHEET 2 OF 2

STATE OF FLORIDA
COUNTY OF PALM BEACH
THIS PLAT WAS FILED FOR
RECORD AT
THIS DAY OF
AD, 1978 AND DULY RECORDED
IN PLAT BOOK ON PAGES
AND
JOHN B. DUNKLE, CLERK
CIRCUIT COURT
BY: DC

188

ACREAGE SUMMARY

(P, A, U & D) (WATER MANAGEMENT)	TRACT "A" (ROAD RIGHT-OF-WAY)	0.887 AC.
	TRACT "B"	0.723 AC.
	BUILDING AREA AND OPEN SPACE	21.593 AC.
	TOTAL	23.203 AC.
PLANNED UNIT DEVELOPMENT DATA		
TOTAL AREA THIS PLAT	23.203 AC.	
LESS ROAD RIGHT-OF-WAY	0.887 AC.	
LESS WATER MANAGEMENT TRACT	0.723 AC.	
EFFECTIVE BASE RESIDENTIAL AREA	21.593 AC.	
TOTAL UNITS THIS PLAT	282 UNITS	
DENSITY	12.15 Units/Ac.	



0259-304
35/45/42

PR.M. NO. 35

FAIRWAY PARK-Indian Spring PUD

EDM

E D M SURVEYING & MAPPING, INC.
2300 PALM BEACH LAKES BOULEVARD
SUITE 109 305 684-3770
WEST PALM BEACH FL 33409

DESIGNED BY: RCF
DATE: NOV 1978
SCALE: 1"=50'
SHEET: 78-101
DATE: 03 1981

PLAT OF
FAIRWAY PARK
36/188