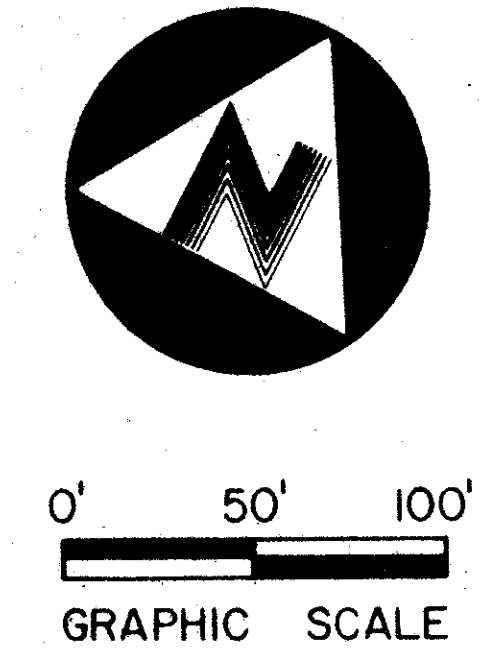


**WINDWARD
AT
JONATHAN'S LANDING**

Being A Replat of Parcel "C", Jonathan's Landing Plat One,
P.U.D., PB. 34, Pg. 29-31, and Lying in Section 6, Town-
ship 41 South, Range 43 East, Palm Beach County, Florida.
Sheet 2 of 2 November, 1978

194

STATE OF FLORIDA
COUNTY OF PALM BEACH
THIS PLAT WAS FILED FOR
RECORD AT _____ M,
THIS DAY OF _____
A.D., 1978 AND DULY RE-
CORDED IN PLAT BOOK
ON PAGES _____ AND _____
JOHN B. DUNKLE, CLERK
CIRCUIT COURT
BY: _____ DC



NOTE:
SAME AS 187

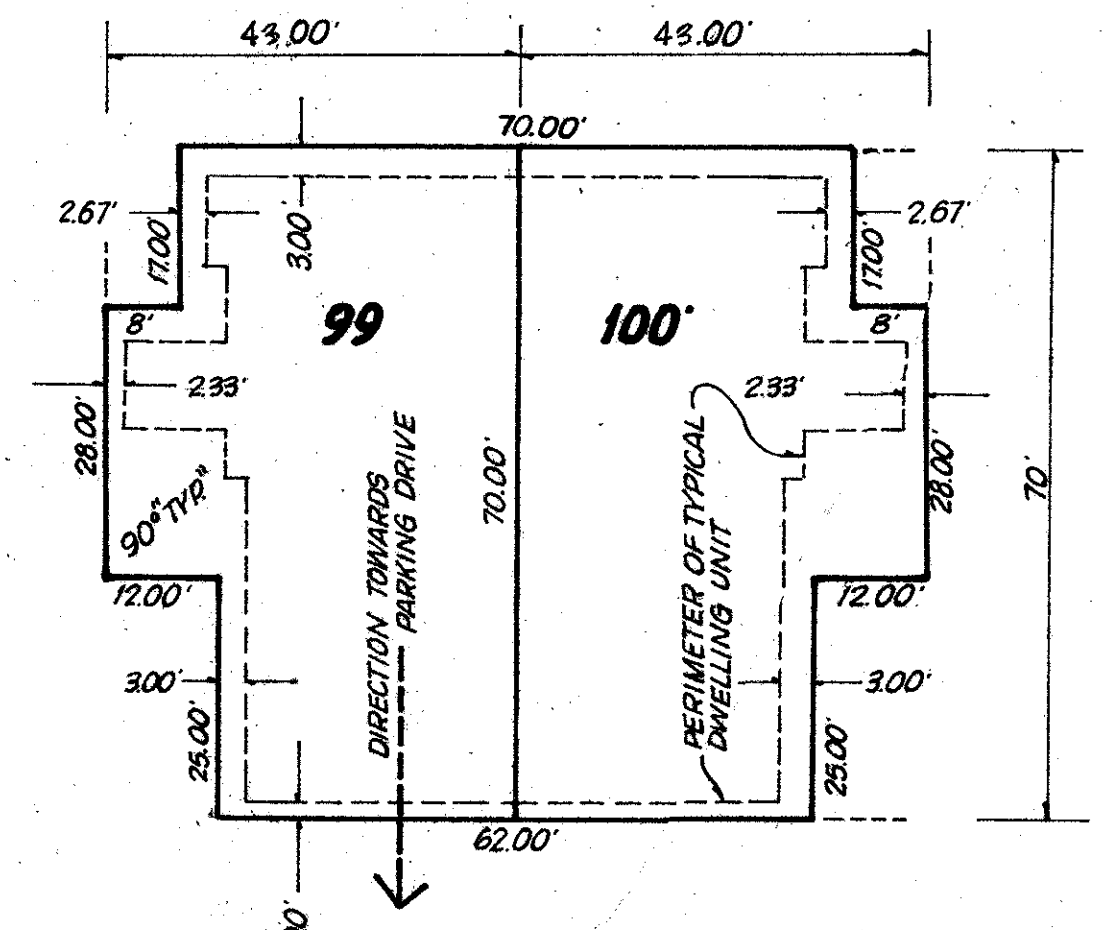
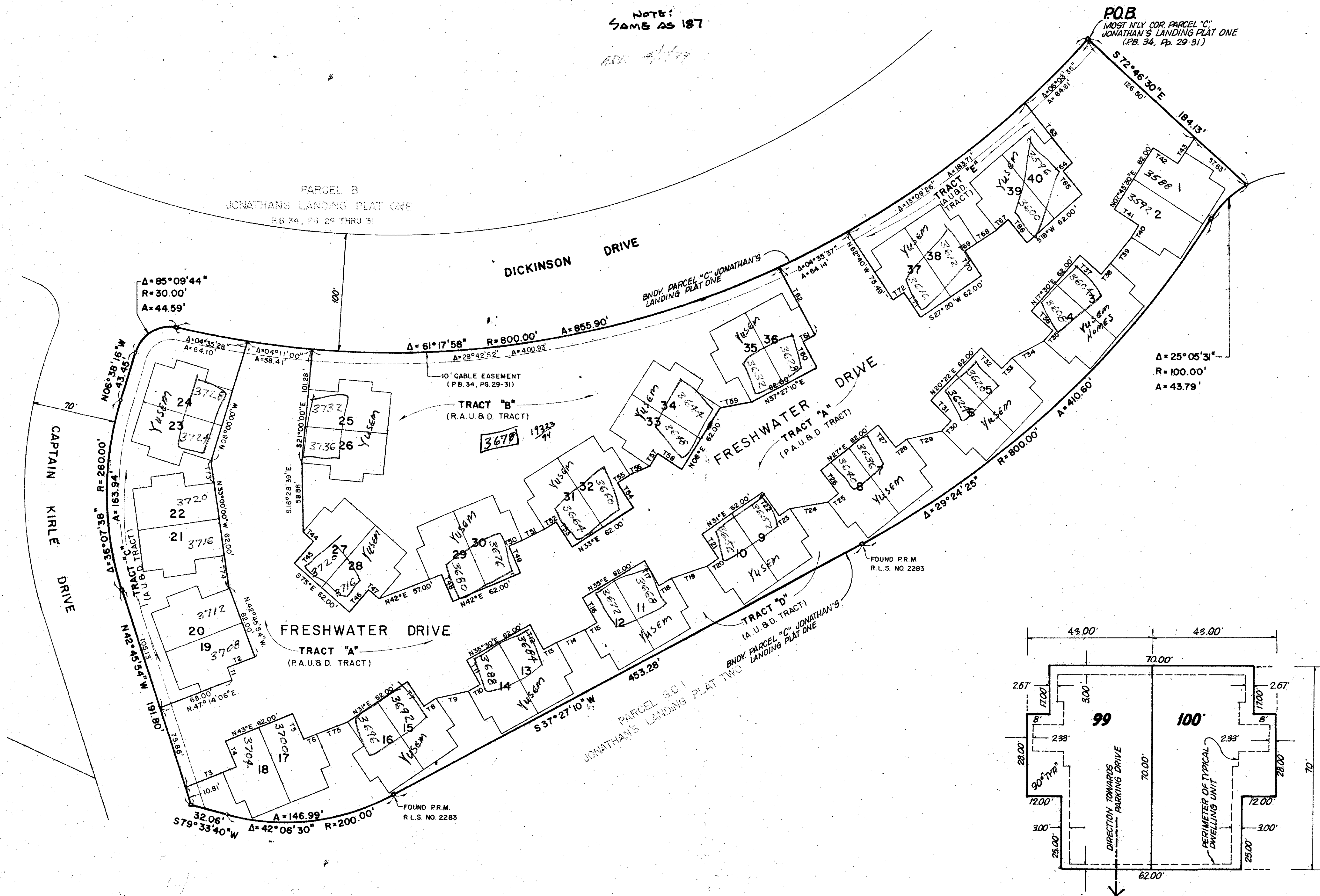


TABLE OF "T" NUMBERS

"T" NO.	BEARING	DIST.	"T" NO.	BEARING	DIST.
T1	N 42°45'54" W	12.00'	T37	S 72°30'00" E	25.00'
T2	N 47°14'06" E	25.00'	T38	N 17°30'00" E	12.00'
T3	N 43°00'00" E	52.75'	T39	N 13°55'04" E	30.86'
T4	N 47°00'00" W	25.00'	T40	N 07°43'30" E	12.00'
T5	S 47°00'00" E	25.00'	T41	N 82°16'30" W	25.00'
T6	N 43°00'00" E	12.00'	T42	S 82°16'30" E	25.00'
T7	S 59°00'00" E	25.00'	T43	N 07°43'30" E	26.53'
T8	N 31°00'00" E	12.00'	T44	S 75°00'00" E	12.00'
T9	N 58°30'00" E	28.00'	T45	S 15°00'00" W	25.00'
T10	N 35°30'00" E	12.00'	T46	N 15°00'00" E	25.00'
T11	N 54°30'00" W	25.00'	T47	S 75°00'00" E	12.00'
T12	S 54°30'00" E	25.00'	T48	N 48°00'00" W	25.03'
T13	N 35°30'00" E	12.00'	T49	N 48°00'00" W	25.00'
T14	N 41°30'00" E	27.00'	T50	N 42°00'00" E	12.00'
T15	N 35°00'00" E	12.00'	T51	N 37°30'00" E	21.00'
T16	N 55°00'00" W	25.00'	T52	N 33°30'00" E	12.00'
T17	S 55°00'00" E	25.00'	T53	S 57°00'00" E	25.00'
T18	N 35°00'00" E	12.00'	T54	N 57°00'00" W	25.00'
T19	N 50°25'56" E	33.75'	T55	N 33°00'00" E	12.00'
T20	N 31°00'00" E	12.00'	T56	N 40°45'40" E	21.98'
T21	N 59°00'00" W	25.00'	T57	N 06°00'00" E	12.00'
T22	S 59°00'00" E	25.00'	T58	S 84°00'00" E	25.00'
T23	N 31°00'00" E	12.00'	T59	N 67°25'05" E	26.33'
T24	N 57°40'59" E	33.80'	T60	N 52°32'50" W	25.00'
T25	N 27°00'00" E	12.00'	T61	N 37°27'10" E	12.00'
T26	N 63°00'00" W	25.00'	T62	S 52°32'50" W	67.02'
T27	S 63°00'00" E	25.00'	T63	S 72°00'00" E	66.08'
T28	N 27°00'00" E	12.00'	T64	S 18°00'00" W	12.00'
T29	N 50°54'37" E	30.65'	T65	N 72°00'00" W	25.00'
T30	N 20°22'00" E	12.00'	T66	N 72°00'00" W	25.00'
T31	S 69°38'00" E	25.00'	T67	S 18°00'00" W	12.00'
T32	S 69°38'00" E	25.00'	T68	S 54°24'38" W	25.81'
T33	N 20°22'00" E	12.00'	T69	S 27°20'00" W	12.00'
T34	N 34°21'26" E	29.31'	T70	S 62°40'00" E	25.00'
T35	N 17°30'00" E	12.00'	T71	N 62°40'00" W	25.00'
T36	N 72°30'00" W	25.00'	T72	S 27°20'00" W	12.00'
T73	N 19°46'28" W	19.93'			
T74	N 43°19'39" W	29.83'			
T75	N 30°38'55" E	24.00'			

0261-309

Flood Hazard Yes
AS 6'

Windward AT Jonathan's Landing

6/4/78

WINDWARD
AT
JONATHAN'S LANDING

DESIGNED	DRAWN	CHECKED	DATE
C.B.	R.J.W.	R.J.W.	12-1-78
SCALE	APPROVED	DATE	
1"=50'	R.J.W.		

194

THIS INSTRUMENT WAS PREPARED BY ROBERT J. WHITMAN IN THE OFFICES OF BENCH MARK LAND SURVEYING AND MAPPING, INC., 2300 PALM BEACH LANE BLVD., SUITE 208, WEST PALM BEACH, FLA. 33409. PHONE 689-2111.