

THE PINES OF WELLINGTON

P.U.D.

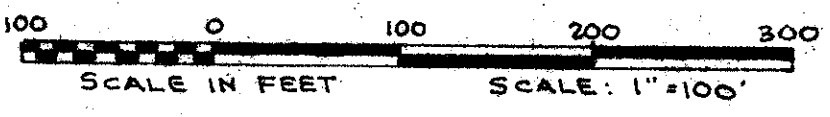
IN PART OF SECTIONS 3 & 4, TWP. 44 S., RGE. 41 E.

PALM BEACH COUNTY, FLORIDA
IN 3 SHEETS SHEET NO. 2

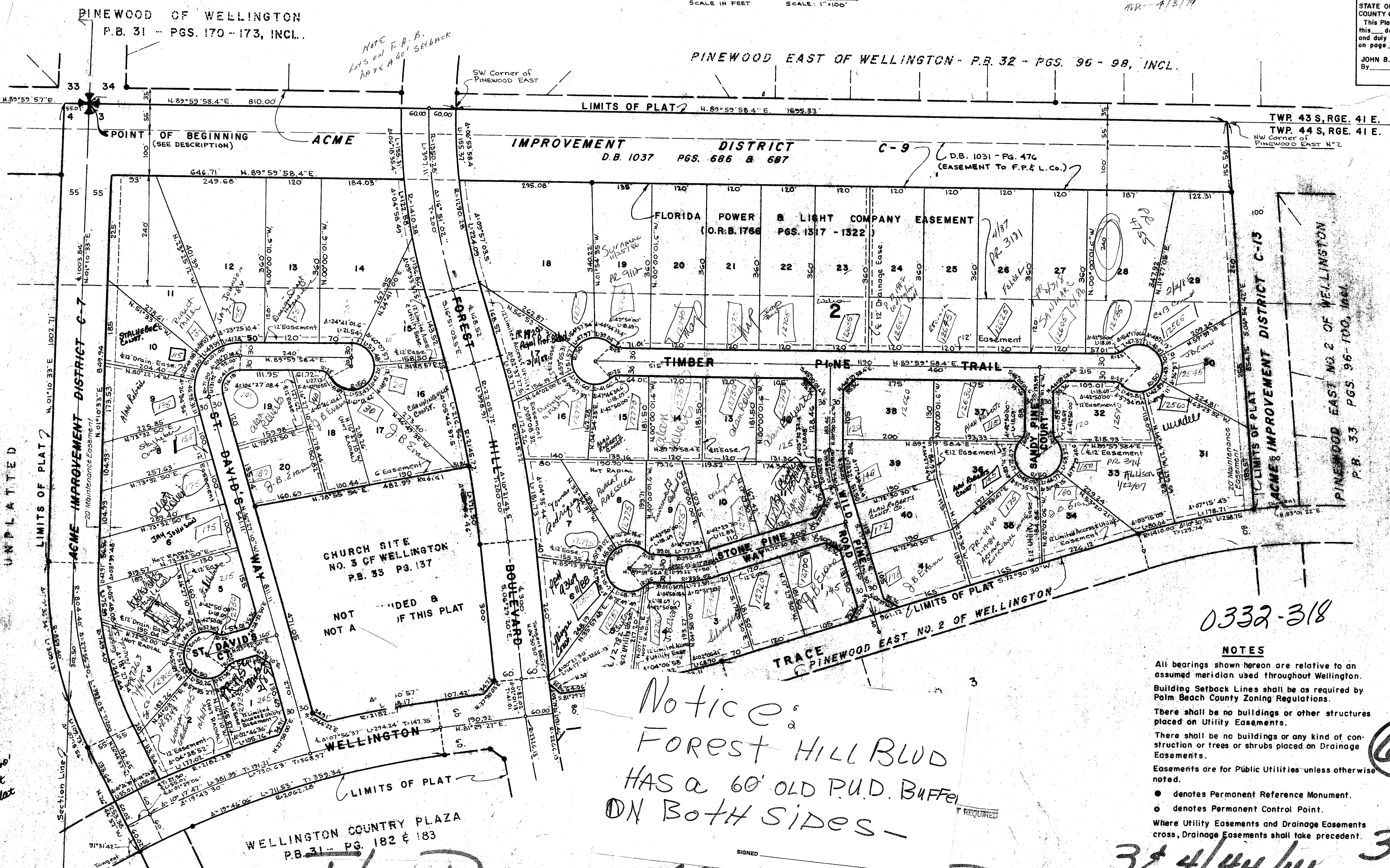
GEE & JENSON
ENGINEERS - ARCHITECTS - PLANNERS, INC.
WEST PALM BEACH, FLORIDA
AUGUST 1977

Please Address and reflect same
on Wellington Master sheet in P.U.D. file

E/B
2 APR. 79



STATE OF FLORIDA
COUNTY OF PALM BEACH
This Plat was filed for record at _____ M.
this day of _____, 1979,
and duly recorded in Plat Book No. _____
on page _____
JOHN B. DUNKLE, Clerk Circuit Court
By _____, D.C.



NOTE
Lots on F.P.B.
have a 60' setback

1/3/79



Notice:
Forest Hill Blvd
HAS a 60' OLD P.U.D. BUFFER
ON BOTH SIDES -

WELLINGTON COUNTRY PLAZA
P.B. 31 - PG. 182 & 183

The Pines of Wellington PUD

0332-318

NOTES

- All bearings shown hereon are relative to an assumed meridian used throughout Wellington.
- Building Setback Lines shall be as required by Palm Beach County Zoning Regulations.
- There shall be no buildings or other structures placed on Utility Easements.
- There shall be no buildings or any kind of construction or trees or shrubs placed on Drainage Easements.
- Easements are for Public Utilities unless otherwise noted.
- denotes Permanent Reference Monument.
- denotes Permanent Control Point.
- Where Utility Easements and Drainage Easements cross, Drainage Easements shall take precedent.

62

3 & 4/44/41 37/9

Handwritten note: 1/23/79, lot 6, street, etc.