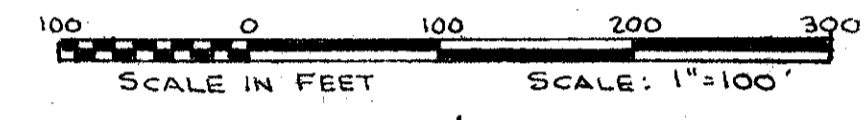


STATE OF FLORIDA
COUNTY OF PALM BEACH
This Plat was filed for record at
this day of 1975,
and duly recorded in Plat Book No.
on page
JOHN B. DUNKLE, Clerk Circuit Court
By _____ D.C.

THE PINES OF WELLINGTON

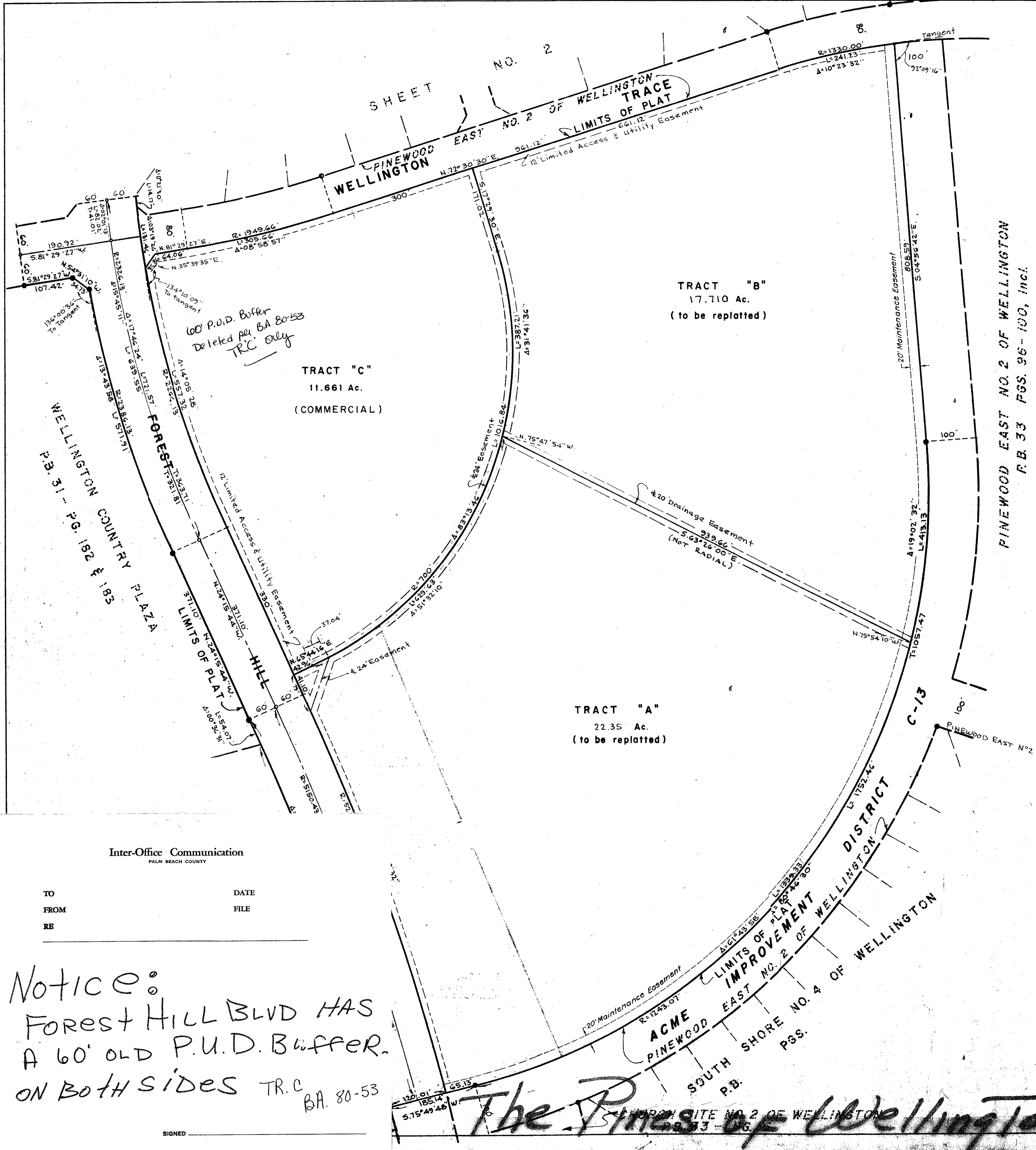
P.U.D.
IN PART OF SECTIONS 3 & 4, TWP. 44 S., RGE. 41 E.
PALM BEACH COUNTY, FLORIDA
IN 3 SHEETS SHEET NO. 3

GEE & JENSON
ENGINEERS - ARCHITECTS - PLANNERS, INC.
WEST PALM BEACH, FLORIDA
AUGUST 1977



NOTES

- All bearings shown hereon are relative to an assumed meridian used throughout Wellington.
- Building Setback Lines shall be as required by Palm Beach County Zoning Regulations.
- There shall be no buildings or other structures placed on Utility Easements.
- There shall be no buildings or any kind of construction or trees or shrubs placed on Drainage Easements.
- Easements are for Public Utilities, unless otherwise noted.
- denotes Permanent Reference Monument.
- denotes Permanent Control Point.
- Where Utility Easements and Drainage Easements cross, Drainage Easements shall take precedent.



TRACT "B"
17.710 Ac.
(to be replatted)

TRACT "C"
11.661 Ac.
(COMMERCIAL)

TRACT "A"
22.35 Ac.
(to be replatted)

Inter-Office Communication

TO	DATE
FROM	FILE
RE	

Notice:
Forest Hill Blvd HAS
A 60' OLD P.U.D. Buffer.
ON BOTH SIDES TR. C
BA. 80-53

0332-318
3 & 4/44/41
37/10
62

The Pines of Wellington P.U.D.