

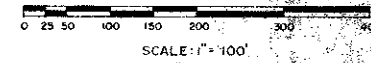
# SILVER WOODS PHASE II

A PLAT OF A PORTION OF SECTION 21, TWP. 47 S., RGE. 42 E.  
AND ALSO BEING A REPLAT OF TRACT 2, BOCA DEL MAR NO. 5, AS RECORDED IN  
PLAT BOOK 30, PAGES 127-128 OF THE PUBLIC RECORDS OF PALM BEACH COUNTY, FLORIDA  
PALM BEACH COUNTY, FLORIDA

JOHN A. GRANT, JR., INC. CONSULTING ENGINEERS & LAND SURVEYORS BOCA RATON, FLORIDA

NOVEMBER, 1978

SHEET 2 OF 2



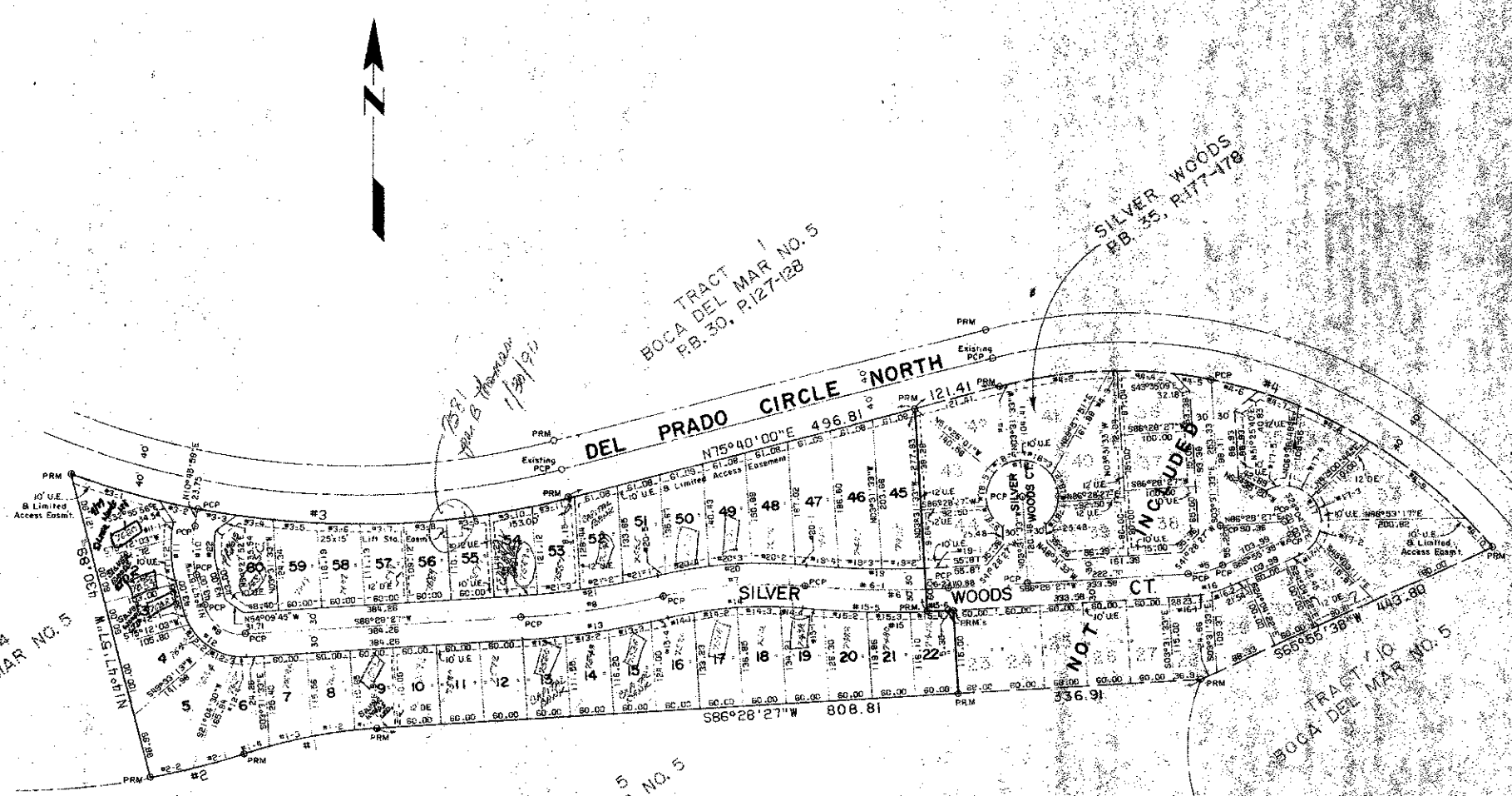
TOTAL AREA TRACT 2	14,400 AC.
TOTAL UNITS ALLOWED, TRACT 2	99
TOTAL UNITS PROPOSED, TRACT 2	60
DENSITY PROPOSED, TRACT 2	4.17 UNITS/AC.
AREA OF LOTS, PHASE II	6,972 AC.
AREA, PLATED ROAD R/W, PHASE II	1,617 AC.
TOTAL AREA PHASE II (THIS PLAT)	8,589 AC.
NO. UNITS PROPOSED, PHASE II	38
DENSITY PROPOSED, PHASE II	4.42 UNITS/AC.
LAND USE	SINGLE FAMILY

29

LOT NO.	SQ. FT.
L-1	9,894
L-2	6,359
L-3	6,200
L-4	8,281
L-5	13,246
L-6	9,787
L-7	7,324
L-8	6,785
L-9	6,807
L-10	6,600
L-11	6,800
L-12	6,800
L-13	6,631
L-14	6,611
L-15	7,190
L-16	7,732
L-17	8,134
L-18	8,183
L-19	7,828
L-20	7,271
L-21	7,050
L-22	6,900
L-23	6,800
L-24	6,900
L-25	6,900
L-26	6,800
L-27	6,900
L-28	6,800
L-29	6,900
L-30	6,800
L-31	7,945
L-32	17,366
L-33	13,096
L-34	7,433
L-35	9,225
L-36	7,965
L-37	7,600
L-38	6,887
L-39	6,246
L-40	10,676
L-41	10,610
L-42	9,890
L-43	9,077
L-44	8,242
L-45	12,881
L-46	11,792
L-47	10,615
L-48	9,503
L-49	9,711
L-50	9,254
L-51	9,082
L-52	7,679
L-53	7,680
L-54	7,061
L-55	6,715
L-56	6,363
L-57	6,363
L-58	6,804
L-59	7,300
L-60	5,907
STREET	132,942
TOTAL	627,594

TABLE OF ARCS

NUMBER	BEARING	ARC	CHORD	AREA	CHORD BEARING
1	N 15° 40' 00" E	121.41	121.41	0.00	N 15° 40' 00" E
2	S 86° 26' 27" W	808.81	808.81	0.00	S 86° 26' 27" W
3	N 75° 40' 00" E	496.81	496.81	0.00	N 75° 40' 00" E
4	S 86° 26' 27" W	808.81	808.81	0.00	S 86° 26' 27" W
5	N 15° 40' 00" E	121.41	121.41	0.00	N 15° 40' 00" E
6	S 86° 26' 27" W	808.81	808.81	0.00	S 86° 26' 27" W
7	N 75° 40' 00" E	496.81	496.81	0.00	N 75° 40' 00" E
8	S 86° 26' 27" W	808.81	808.81	0.00	S 86° 26' 27" W
9	N 15° 40' 00" E	121.41	121.41	0.00	N 15° 40' 00" E
10	S 86° 26' 27" W	808.81	808.81	0.00	S 86° 26' 27" W
11	N 75° 40' 00" E	496.81	496.81	0.00	N 75° 40' 00" E
12	S 86° 26' 27" W	808.81	808.81	0.00	S 86° 26' 27" W
13	N 15° 40' 00" E	121.41	121.41	0.00	N 15° 40' 00" E
14	S 86° 26' 27" W	808.81	808.81	0.00	S 86° 26' 27" W
15	N 75° 40' 00" E	496.81	496.81	0.00	N 75° 40' 00" E
16	S 86° 26' 27" W	808.81	808.81	0.00	S 86° 26' 27" W
17	N 15° 40' 00" E	121.41	121.41	0.00	N 15° 40' 00" E
18	S 86° 26' 27" W	808.81	808.81	0.00	S 86° 26' 27" W
19	N 75° 40' 00" E	496.81	496.81	0.00	N 75° 40' 00" E
20	S 86° 26' 27" W	808.81	808.81	0.00	S 86° 26' 27" W
21	N 15° 40' 00" E	121.41	121.41	0.00	N 15° 40' 00" E
22	S 86° 26' 27" W	808.81	808.81	0.00	S 86° 26' 27" W
23	N 75° 40' 00" E	496.81	496.81	0.00	N 75° 40' 00" E
24	S 86° 26' 27" W	808.81	808.81	0.00	S 86° 26' 27" W
25	N 15° 40' 00" E	121.41	121.41	0.00	N 15° 40' 00" E
26	S 86° 26' 27" W	808.81	808.81	0.00	S 86° 26' 27" W
27	N 75° 40' 00" E	496.81	496.81	0.00	N 75° 40' 00" E
28	S 86° 26' 27" W	808.81	808.81	0.00	S 86° 26' 27" W
29	N 15° 40' 00" E	121.41	121.41	0.00	N 15° 40' 00" E
30	S 86° 26' 27" W	808.81	808.81	0.00	S 86° 26' 27" W
31	N 75° 40' 00" E	496.81	496.81	0.00	N 75° 40' 00" E
32	S 86° 26' 27" W	808.81	808.81	0.00	S 86° 26' 27" W
33	N 15° 40' 00" E	121.41	121.41	0.00	N 15° 40' 00" E
34	S 86° 26' 27" W	808.81	808.81	0.00	S 86° 26' 27" W
35	N 75° 40' 00" E	496.81	496.81	0.00	N 75° 40' 00" E
36	S 86° 26' 27" W	808.81	808.81	0.00	S 86° 26' 27" W
37	N 15° 40' 00" E	121.41	121.41	0.00	N 15° 40' 00" E
38	S 86° 26' 27" W	808.81	808.81	0.00	S 86° 26' 27" W
39	N 75° 40' 00" E	496.81	496.81	0.00	N 75° 40' 00" E
40	S 86° 26' 27" W	808.81	808.81	0.00	S 86° 26' 27" W
41	N 15° 40' 00" E	121.41	121.41	0.00	N 15° 40' 00" E
42	S 86° 26' 27" W	808.81	808.81	0.00	S 86° 26' 27" W
43	N 75° 40' 00" E	496.81	496.81	0.00	N 75° 40' 00" E
44	S 86° 26' 27" W	808.81	808.81	0.00	S 86° 26' 27" W
45	N 15° 40' 00" E	121.41	121.41	0.00	N 15° 40' 00" E
46	S 86° 26' 27" W	808.81	808.81	0.00	S 86° 26' 27" W
47	N 75° 40' 00" E	496.81	496.81	0.00	N 75° 40' 00" E
48	S 86° 26' 27" W	808.81	808.81	0.00	S 86° 26' 27" W
49	N 15° 40' 00" E	121.41	121.41	0.00	N 15° 40' 00" E
50	S 86° 26' 27" W	808.81	808.81	0.00	S 86° 26' 27" W
51	N 75° 40' 00" E	496.81	496.81	0.00	N 75° 40' 00" E
52	S 86° 26' 27" W	808.81	808.81	0.00	S 86° 26' 27" W
53	N 15° 40' 00" E	121.41	121.41	0.00	N 15° 40' 00" E
54	S 86° 26' 27" W	808.81	808.81	0.00	S 86° 26' 27" W
55	N 75° 40' 00" E	496.81	496.81	0.00	N 75° 40' 00" E
56	S 86° 26' 27" W	808.81	808.81	0.00	S 86° 26' 27" W
57	N 15° 40' 00" E	121.41	121.41	0.00	N 15° 40' 00" E
58	S 86° 26' 27" W	808.81	808.81	0.00	S 86° 26' 27" W
59	N 75° 40' 00" E	496.81	496.81	0.00	N 75° 40' 00" E
60	S 86° 26' 27" W	808.81	808.81	0.00	S 86° 26' 27" W



**NOTES**

Bearings shown hereon are based on bearings shown on the Plat of BOCA DEL MAR NO. 5, as recorded in Plat Book 30, Pages 127-128 of the Public Records of Palm Beach County, Florida.

No buildings, trees, or shrubs shall be placed on easements.

PRM Indicates Permanent Reference Monument (Existing)  
PCP Indicates Permanent Control Point  
U.E. Indicates Utility Easement  
D.E. Indicates Drainage Easement

This instrument was prepared by  
John A. Grant, Jr., John A. Grant, Jr., Inc.  
3333 North Federal Highway, Boca Raton, Florida

Silver Woods Phase II - Boca Del Mar PUD

54  
37/29  
0205-349

21/47/42