

PLAT NO. 1 ORIOLE BOULEVARD

PART OF A
P.U.D.

BEING A REPLAT OF A PORTION OF TRACT A
PLAT NO. 1 VILLAGES OF ORIOLE (P.B. 30, P.B. 38, 39, 40)
TOWNSHIP 48 SOUTH, RANGE 42 EAST
SECTION 10, PALM BEACH COUNTY, FLORIDA

PREPARED BY:
BROOME & FARINA, INC.
Engineers - Planners - Surveyors
Coral Springs, Florida
R. M. Kirk
Professional Land Surveyor
*2024

38

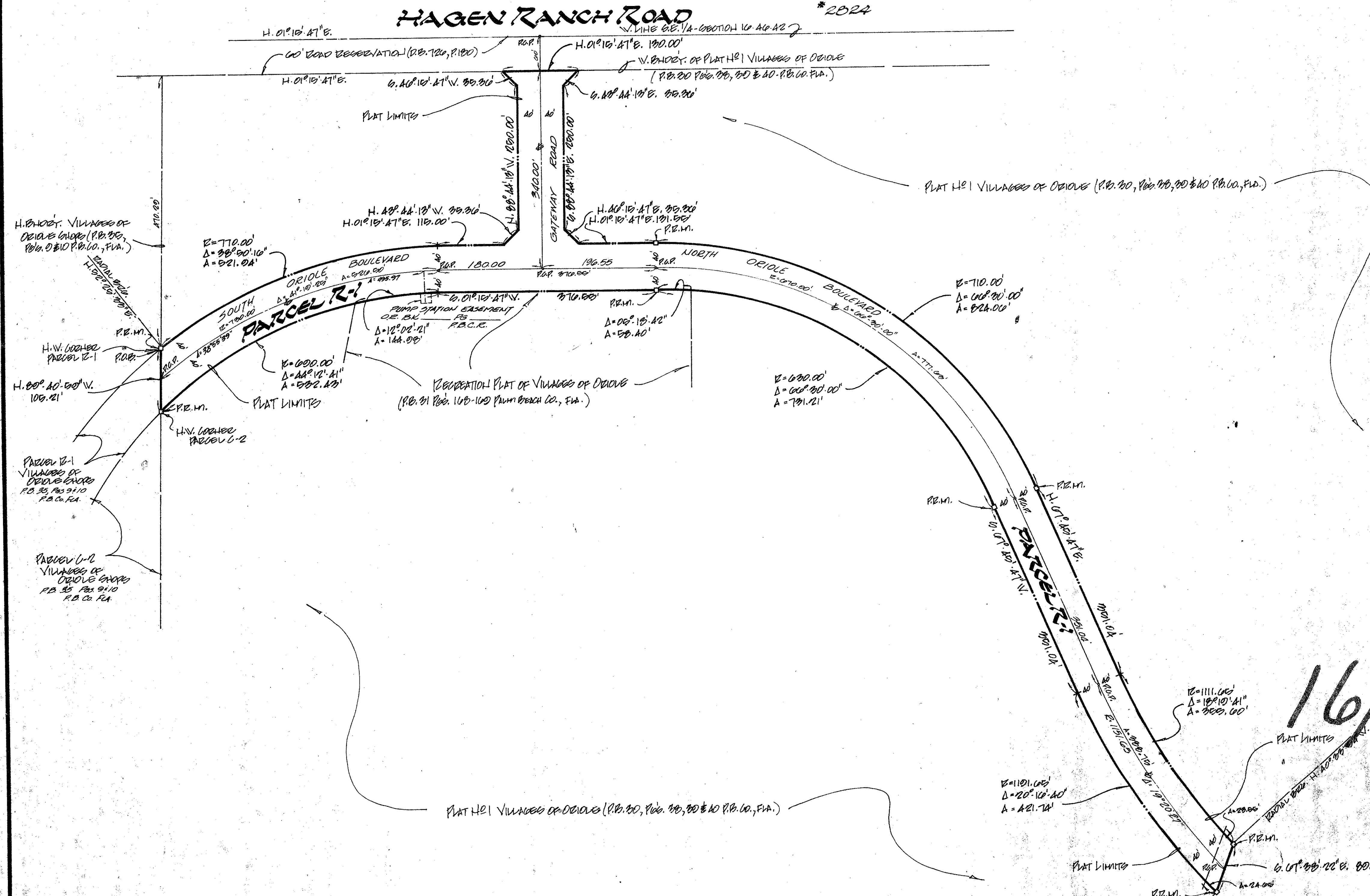
STATE OF FLORIDA }
COUNTY OF PALM BEACH } 46

THIS PLAT WAS FILED FOR
RECORD AT _____ ON THE
_____ DAY OF _____
1970, AND FULLY RECORDED
IN PLAT BOOK _____ PAGE _____

JOHN B. DUNN
CLERK OF CIRCUIT COURT

BY _____

FLOOD ZONE 'B'
SHEET 2 OF 2



16/46/42

51

37/38

Oriole Boulevard PLAT #I Pud