

☒ NORTHLAKE BLVD.

N. LINE SECT. 19/42/43

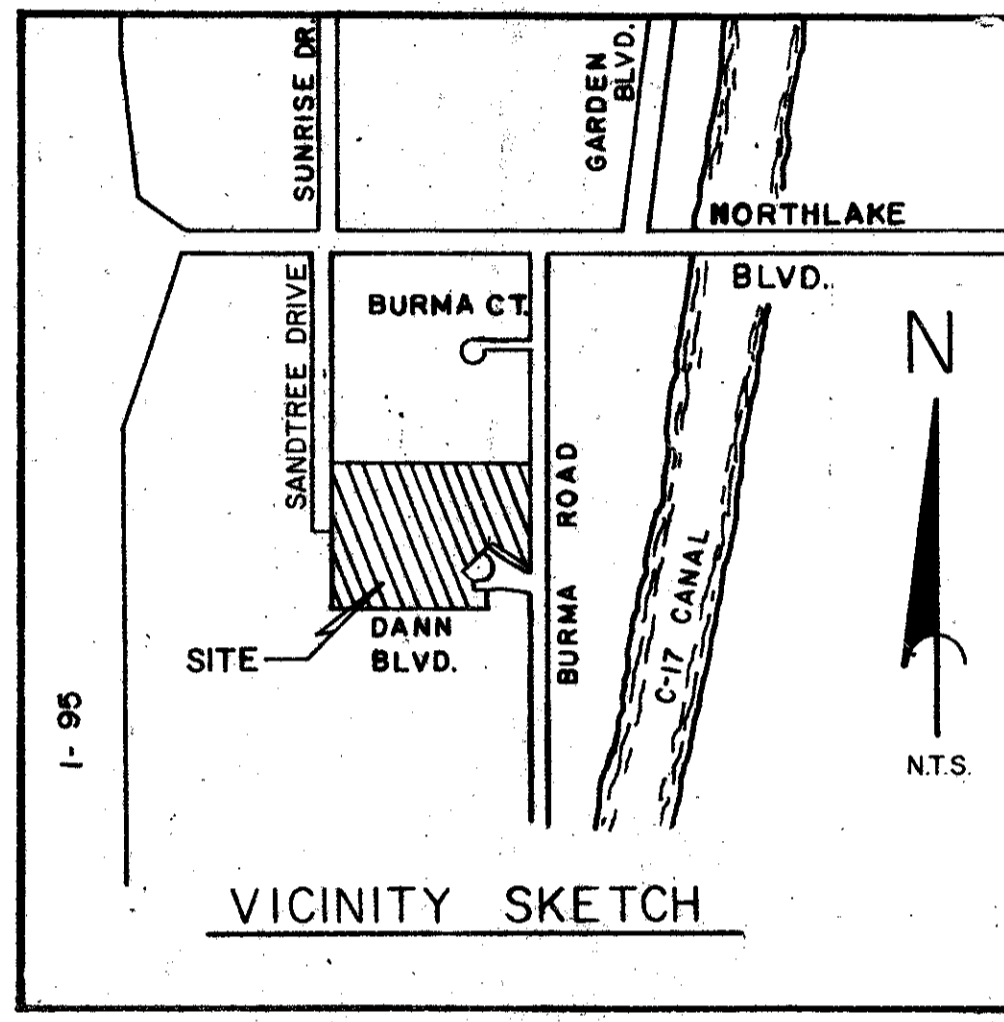
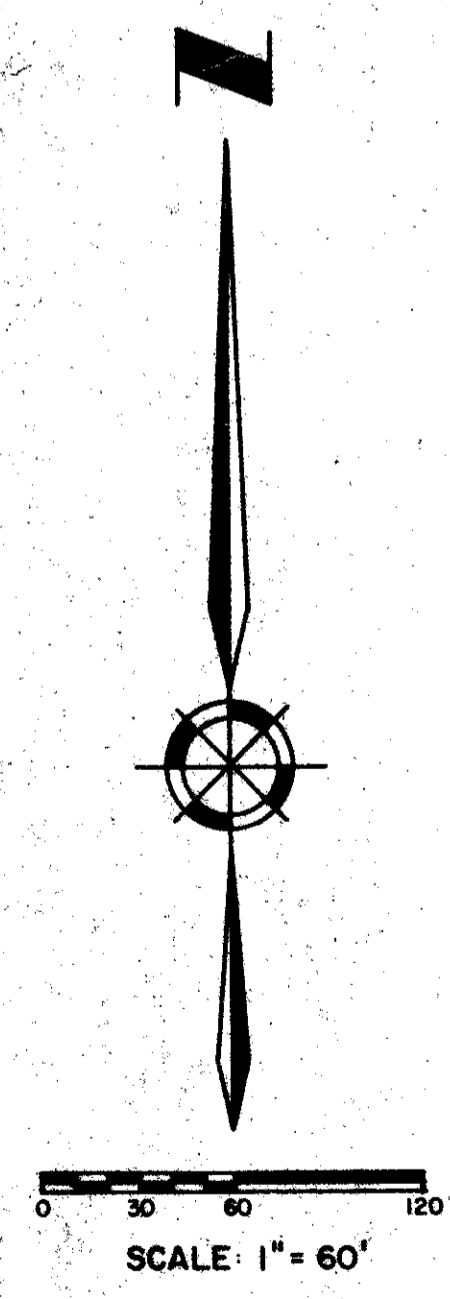
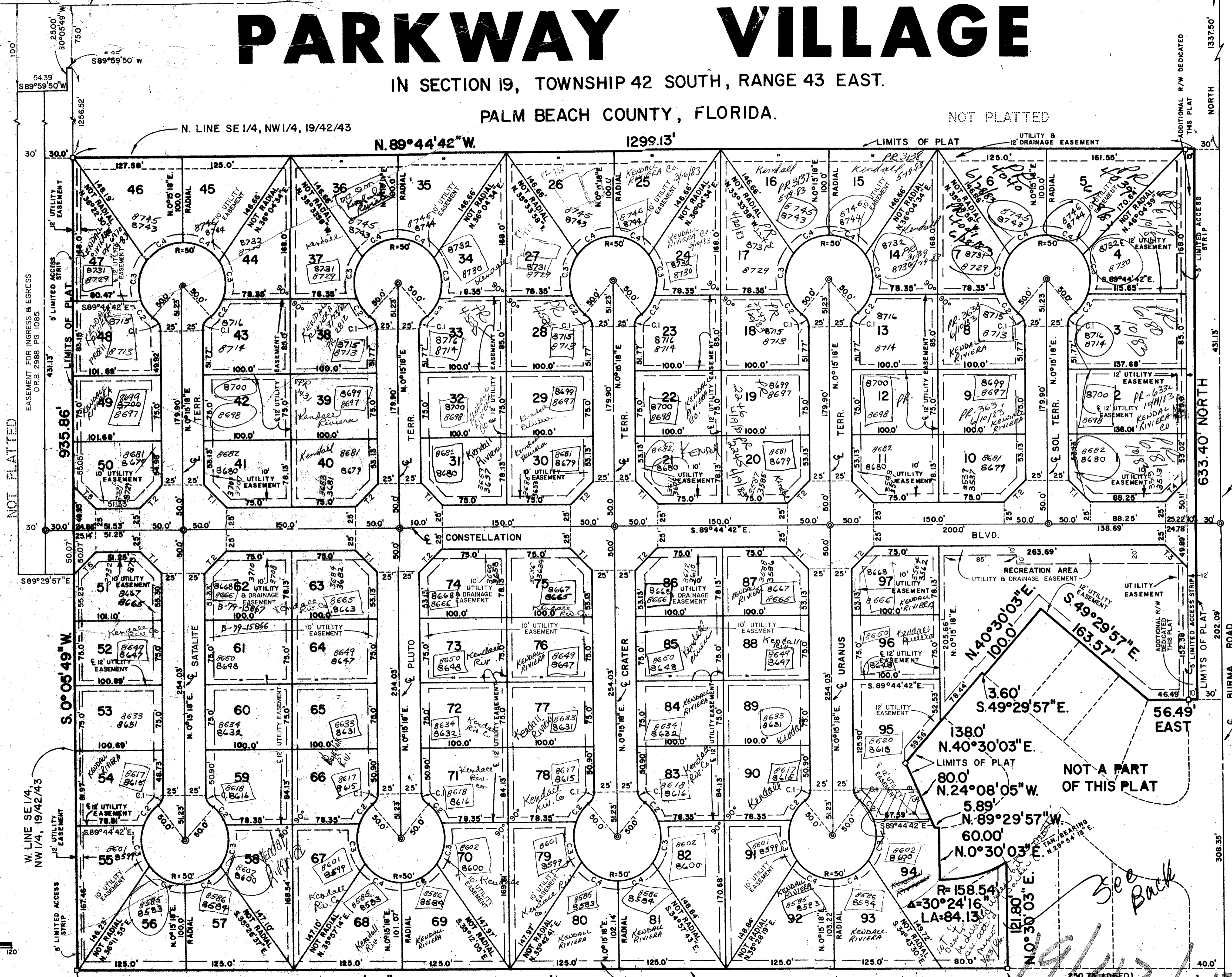
NORTH 1/4 CORNER SECTION 19, TOWNSHIP 42 SOUTH, RANGE 43 EAST

PLAT OF PARKWAY VILLAGE

IN SECTION 19, TOWNSHIP 42 SOUTH, RANGE 43 EAST.

PALM BEACH COUNTY, FLORIDA.

NOT PLATTED



- NOTES:
- There shall be no buildings or structures placed on public utility easements.
 - There shall be no buildings or the planting of trees and shrubs on drainage easements.
 - Bearings shown refer to an assumed bearing of North along the North-South quarter section line of Section 19, Township 42 South, Range 43 East, Palm Beach County, Florida.
 - ⊙ = Denotes Permanent Control Points (P.C.P.)
 - = Denotes Permanent Reference Monuments (P.R.M.)
 - Where Drainage and Utility Easements coincide, the Utilities must be placed in such a manner that they will not interfere with the Drainage facilities.

0327-001
14

TANGENT DATA

No.	Bearing	Length
T.1	S. 44°44'42" E.	35.36'
T.2	N. 45°15'18" E.	35.36'
T.3	S. 44°52'21" E.	35.28'
T.4	S. 45°07'39" W.	35.43'
T.5	N. 44°49'27" W.	35.31'
T.6	N. 45°10'33" E.	35.40'

CURVE DATA

No.	radius	Delta	Length of Arc
C.1	15.00'	52°01'12"	13.62'
C.2	50.00'	30°55'11"	26.98'
C.3	5000'	5°32'03"	51.95'
C.4	5000'	51°33'58"	45.00'

S. 89° 29' 57" E. 1080.00'

NOT PLATTED

PARKWAY VILLAGE

S. LINE NW 1/4, 19/42/43

N 89°29'57" W

CENTER OF SECT.

37/42

PARKWAY VILLAGE

WILLIAM G. WALLACE, INC.
Consulting Engineers & Land Surveyors
321 Northlake Blvd., Suite 113, North Palm Beach, Florida

FIELD: D.L.	JOB NO: J77-51	FILE NO: 19/42/43
OFFICE: C.A.W. II	DATE: AUG. 1977	DWG. NO: 77-23
CHK'D: K.S.	REF: 70-130 668-360	SHEET 2 OF 2

FLOOD ZONE 'B'

42

39/42

See Back

RM 19/42/43

FSZ 10 FLOOD

P.O.B.

S.E. CORNER, N.W. 1/4 SECTION 19, TOWNSHIP 42 SOUTH, RANGE 43 EAST