

VISTA DEL BOCA

BEING A REPLAT OF TRACTS 20 AND 21 BLOCK 79, PALM BEACH FARMS COMPANY PLAT NO. 3, P.B. 2, PP. 45-54 INCLUSIVE, AND SITUATE IN SECTION 20, TWP. 47 SO., RGE. 42 EAST, PALM BEACH COUNTY, FLORIDA

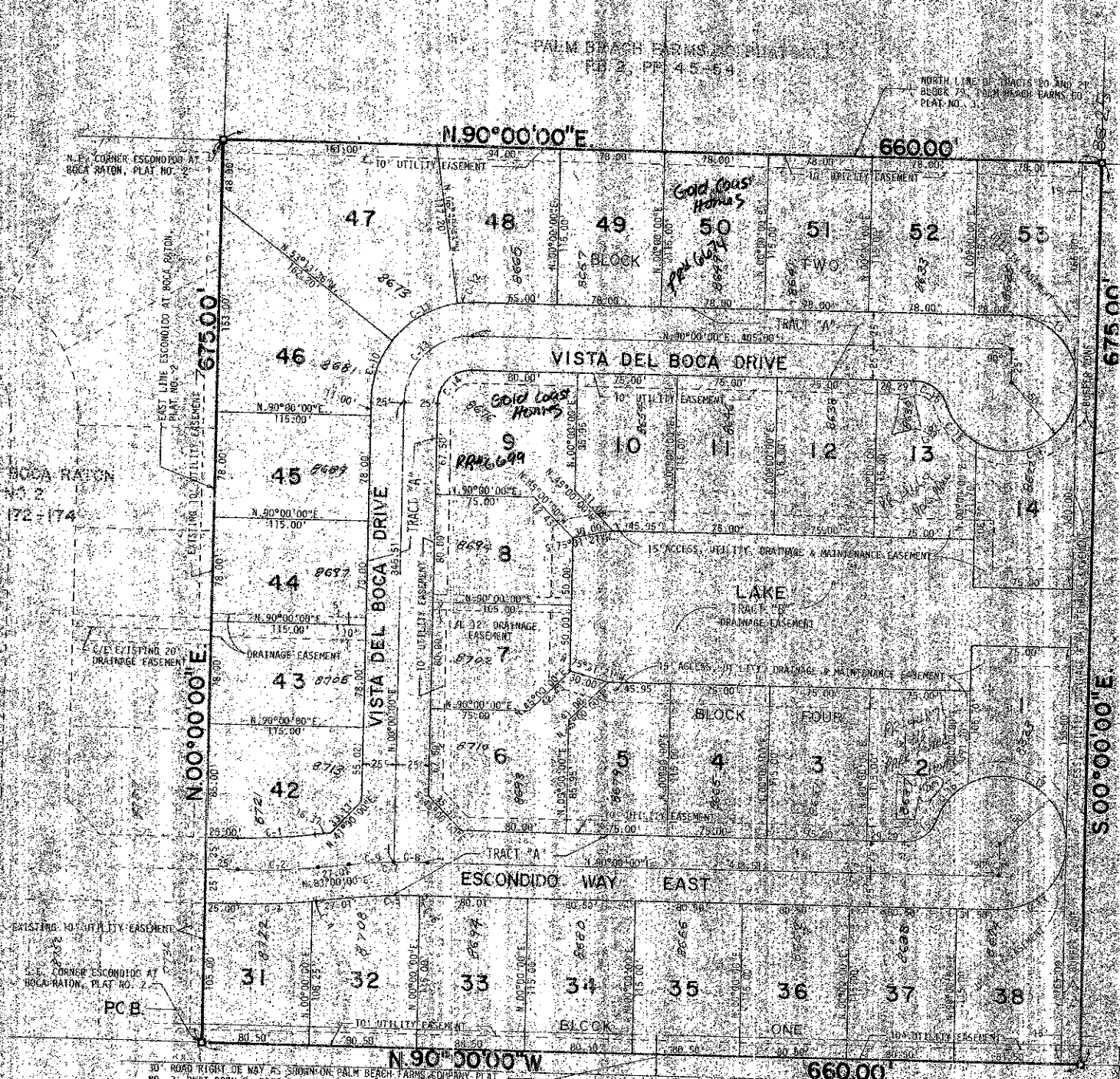
FEBRUARY, 1978

SHEET 2 OF 2



GRAPHIC SCALE
ONE INCH = FIFTY FEET

FLOOD ZONE B



ESCONDIDO AT BOCA RAYON
PLAT NO. 2
P.B. 32, PP. 172-174

PALM BEACH FARMS
P.B. 2, PP. 45-54

CURVE DATA

CURVE	CHORD	RADIUS	ANGLE	CHORD BEARING	STATION
C-1	10720.00'	435.00'	90.00°	N 00° 00' 00" E	10720.00'
C-2	10720.00'	435.00'	90.00°	N 00° 00' 00" E	10720.00'
C-3	10720.00'	435.00'	90.00°	N 00° 00' 00" E	10720.00'
C-4	10720.00'	435.00'	90.00°	N 00° 00' 00" E	10720.00'
C-5	10720.00'	435.00'	90.00°	N 00° 00' 00" E	10720.00'
C-6	10720.00'	435.00'	90.00°	N 00° 00' 00" E	10720.00'
C-7	10720.00'	435.00'	90.00°	N 00° 00' 00" E	10720.00'
C-8	10720.00'	435.00'	90.00°	N 00° 00' 00" E	10720.00'
C-9	10720.00'	435.00'	90.00°	N 00° 00' 00" E	10720.00'
C-10	10720.00'	435.00'	90.00°	N 00° 00' 00" E	10720.00'
C-11	10720.00'	435.00'	90.00°	N 00° 00' 00" E	10720.00'
C-12	10720.00'	435.00'	90.00°	N 00° 00' 00" E	10720.00'
C-13	10720.00'	435.00'	90.00°	N 00° 00' 00" E	10720.00'
C-14	10720.00'	435.00'	90.00°	N 00° 00' 00" E	10720.00'
C-15	10720.00'	435.00'	90.00°	N 00° 00' 00" E	10720.00'
C-16	10720.00'	435.00'	90.00°	N 00° 00' 00" E	10720.00'
C-17	10720.00'	435.00'	90.00°	N 00° 00' 00" E	10720.00'
C-18	10720.00'	435.00'	90.00°	N 00° 00' 00" E	10720.00'
C-19	10720.00'	435.00'	90.00°	N 00° 00' 00" E	10720.00'
C-20	10720.00'	435.00'	90.00°	N 00° 00' 00" E	10720.00'

1000-080
BENCH MARK
land surveying and mapping, inc.

CONWAY SCHAFFER CONSULTING ENGINEERS, INC.
PALM BEACH COUNTY, FLORIDA

VISTA DEL BOCA

37/56

30' ROAD RIGHT OF WAY AS SHOWN ON PALM BEACH FARMS COMPANY PLAT NO. 3, PLAT BOOK 2, PAGES 45 THROUGH 54, INCLUSIVE, (FORMERLY PLATZED, NOW ABANDONED, AS PER D.R.B. 2838, PGS. 1226-1228)

REPLAT OF BOCA LAGO, P.B. 32, PP. 172-174