

PLAT NO. IV-B LE CHALET (P.U.D.)

IN SECTIONS 14 & 15, TOWNSHIP 45 SOUTH, RANGE 42 EAST
PALM BEACH COUNTY, FLORIDA
IN 6 SHEETS SHEET NO. 3

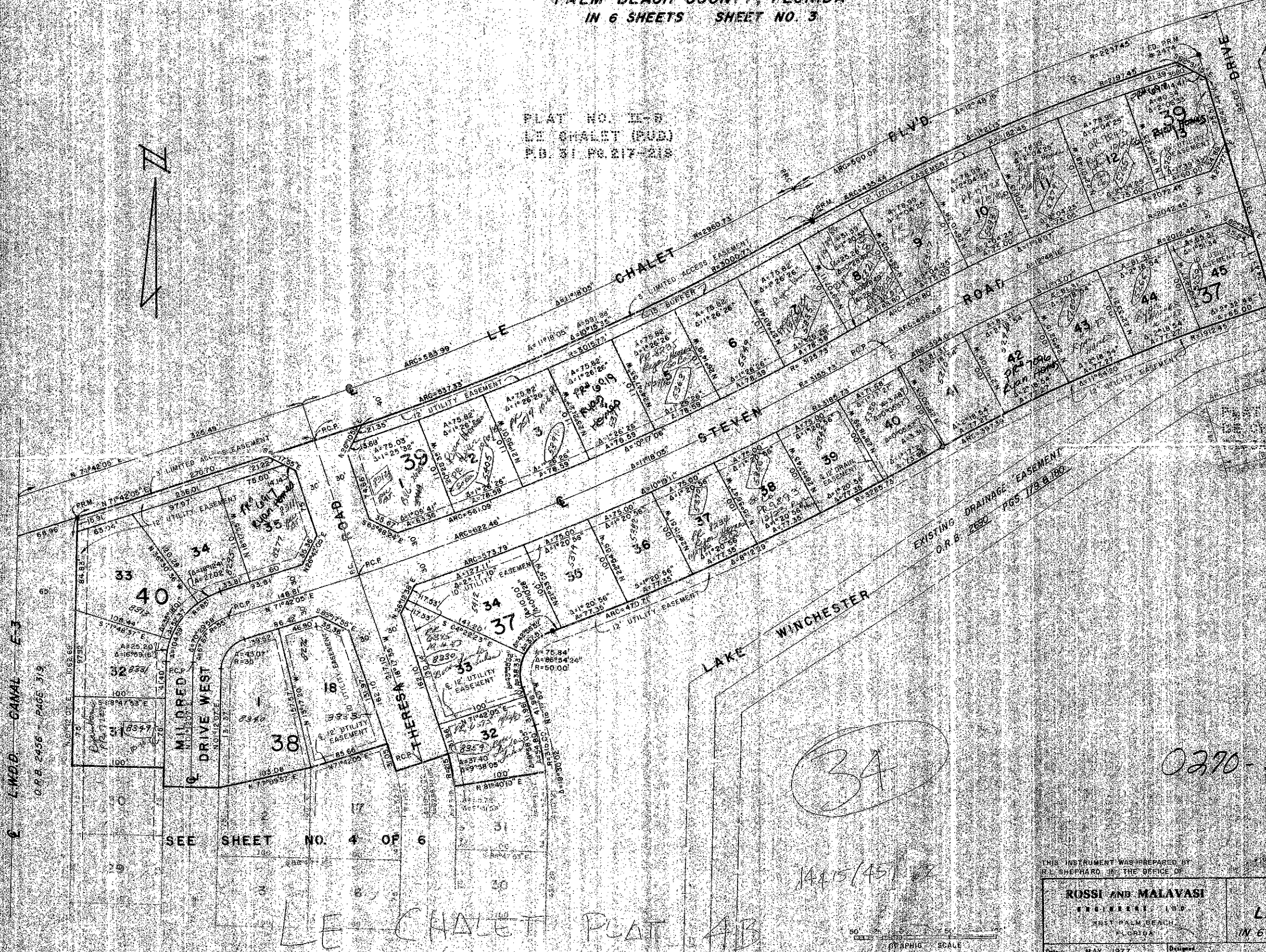
59

STATE OF FLORIDA
COUNTY OF PALM BEACH
The Plat was filed for record on _____
this _____ day of _____
19____ and duly recorded in Plat Book No. _____
of page _____
By JOHN S. DUNKLE, Clerk Circuit Court
O.C.

PLAT NO. IV-B
LE CHALET (P.U.D.)
P.B. 31 PG. 217-218

FLOOD ZONE "B"

PLAT NO. IV-B
LE CHALET (P.U.D.)
P.B. 31 PG. 217-218



SEE SHEET NO. 4 OF 6

LE CHALET PLAT AB

34

1445/451

0270-307
37/57

THIS INSTRUMENT WAS PREPARED BY
R.L. SHEPARD, IN THE OFFICE OF

ROSSI AND MALAVASI
ENGINEERS, INC.
WEST PALM BEACH
FLORIDA

PLAT NO. IV-B
LE CHALET (P.U.D.)
IN 6 SHEETS SHEET NO. 3

Date	MAY 1977	Designed		Scale	1" = 50'
Drawn	F. McEVOY	Checked		Job No.	4275-77
Approved		Checked		File No.	