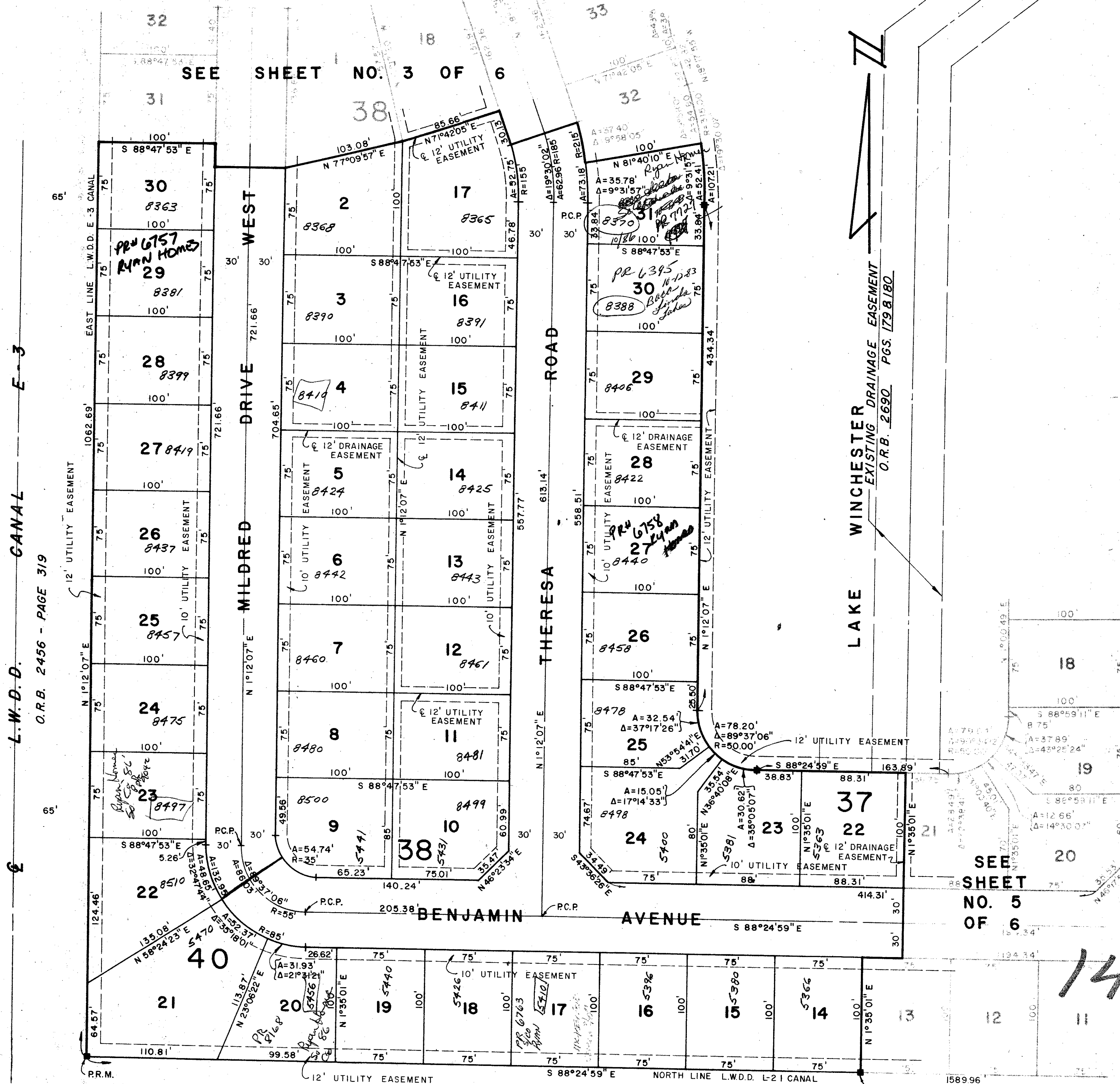


PLAT NO. IV-B LE CHALET (P.U.D.)

IN SECTIONS 14 & 15, TOWNSHIP 45 SOUTH, RANGE 42 EAST
PALM BEACH COUNTY, FLORIDA
IN 6 SHEETS SHEET NO. 4

60

STATE OF FLORIDA }
COUNTY OF PALM BEACH }
This Plat was filed for record at _____ M.
this _____ day of _____
19 _____, and duly recorded in Plat Book No. _____
on page _____
JOHN B. DUNKLE, Clerk Circuit Court
By _____, D. C.
FLOOD ZONE "B"



L.W.D.D. CANAL E-3
O.R.B. 2456 - PAGE 319

LAKE WINCHESTER
EXISTING DRAINAGE EASEMENT
O.R.B. 2690 PGS. 179B, 180

SEE SHEET NO. 5 OF 6

0270-307

34

14 & 15 / 45 / 42

37/60

Le Chalet Plat # IV - PUD

THIS INSTRUMENT WAS PREPARED BY
R. L. SHEPHARD IN THE OFFICE OF
ROSSI AND MALAVASI
ENGINEERS, INC.
WEST PALM BEACH,
FLORIDA

PLAT NO. IV-B
LE CHALET (P.U.D.)
IN 6 SHEETS SHEET NO. 4

Date	MAY, 1977	Designed		Scale	1" = 60'	Sheet	
Drawn		Drawn	F. McELROY	Job No.	4203-77		
Checked		Checked		File No.			4 of 6

