

ST. ANDREWS OF SHERBROOKE P.U.D.

IN PART OF TRACT 42, TWP. 44 1/2 S., RGE. 42 E. & SEC. 6, TWP. 45 S., RGE. 42 E.
PALM BEACH COUNTY, FLORIDA
IN 3 SHEETS SHEET NO. 2

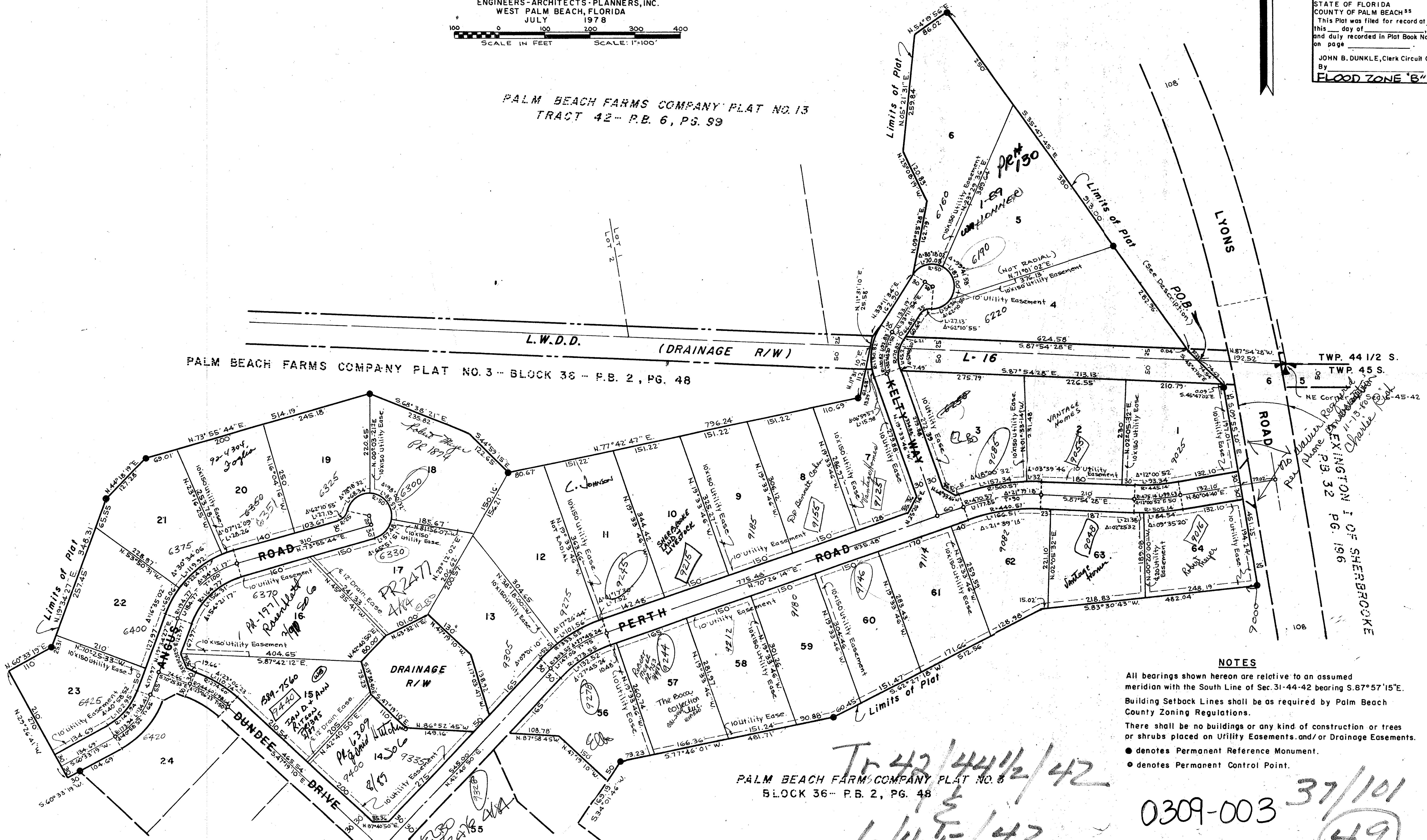
GEE & JENSON
ENGINEERS-ARCHITECTS-PLANNERS, INC.
WEST PALM BEACH, FLORIDA
JULY 1978
SCALE IN FEET SCALE: 1"=100'

101

STATE OF FLORIDA
COUNTY OF PALM BEACH
This Plat was filed for record at _____ M.
this day of _____, 1978,
and duly recorded in Plat Book No. _____
on page _____
JOHN B. DUNKLE, Clerk Circuit Court
By _____, D.C.
FLOOD ZONE "B"

PALM BEACH FARMS COMPANY PLAT NO. 13
TRACT 42 - P.B. 6, PG. 99

PALM BEACH FARMS COMPANY PLAT NO. 3 - BLOCK 36 - P.B. 2, PG. 48



NOTES
All bearings shown hereon are relative to an assumed meridian with the South Line of Sec. 31-44-42 bearing S. 87° 57' 15" E.
Building Setback Lines shall be as required by Palm Beach County Zoning Regulations.
There shall be no buildings or any kind of construction or trees or shrubs placed on Utility Easements and/or Drainage Easements.
● denotes Permanent Reference Monument.
● denotes Permanent Control Point.

Tr 42/44 1/2/42
PALM BEACH FARM COMPANY PLAT NO. 3
BLOCK 36 - P.B. 2, PG. 48
6/45/42
0309-003 37/101
49

SHEET *St Andrews of Sherbrooke PUD*