

# ST. ANDREWS OF SHERBROOKE P.U.D.

IN PART OF TRACT 42, TWP. 44 1/2 S., RGE. 42 E. 8 SEC. 6, TWP. 45 S., RGE. 42 E.  
PALM BEACH COUNTY, FLORIDA  
IN 3 SHEETS SHEET NO. 3

SHEET NO. 2

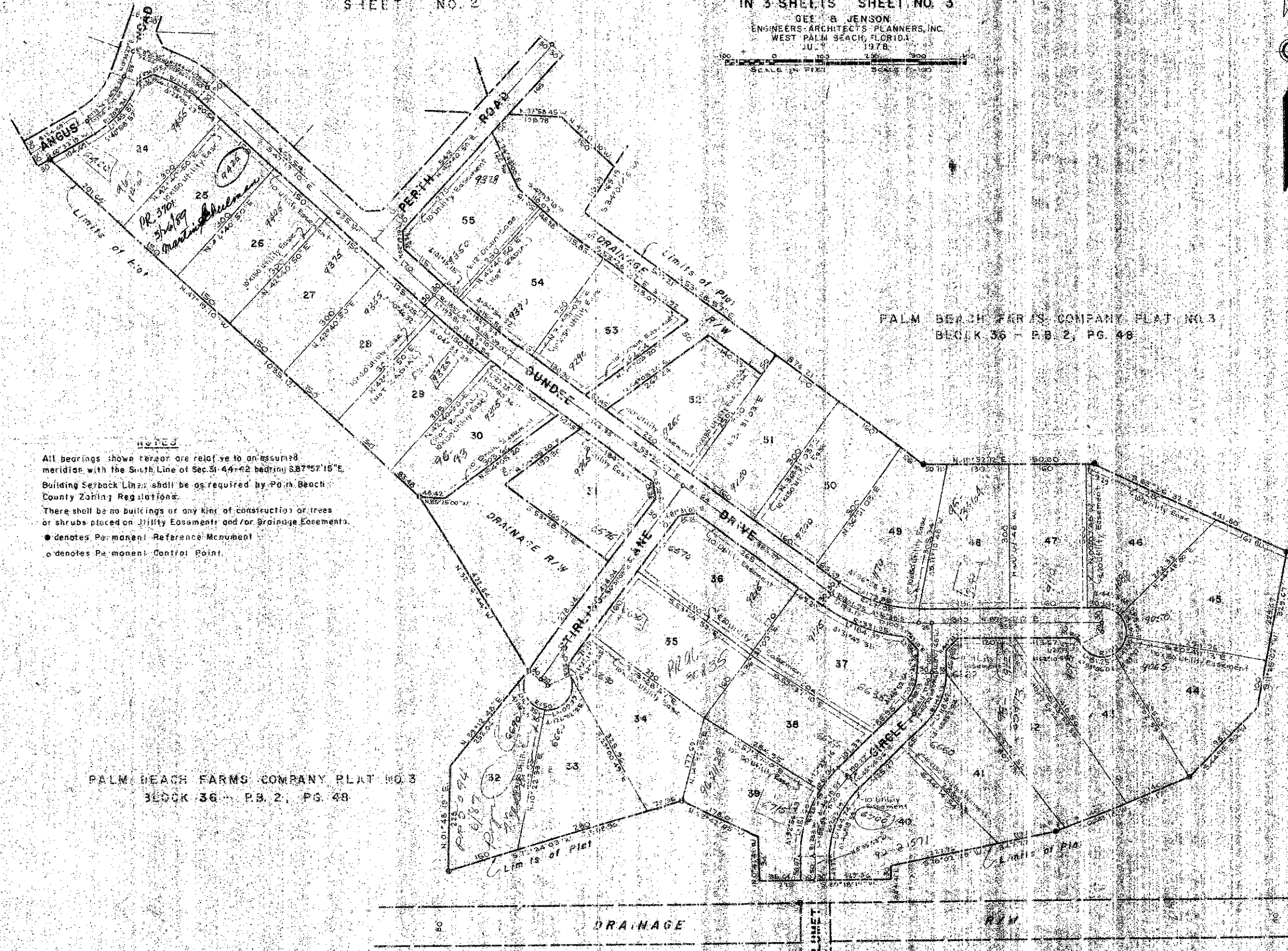
GEE & JENSON  
ENGINEERS-ARCHITECTS-PLANNERS, INC.  
WEST PALM BEACH, FLORIDA  
JULY 1978  
SCALE IN FEET 1" = 200'



37/  
**102**

STATE OF FLORIDA  
COUNTY OF PALM BEACH  
This Plat was filed for record on  
this day of 1978  
and duly recorded in Plat Book No.  
on page  
By JOHN B. DUNKLE, Clerk Circuit Court  
D.C.  
**FLOOD ZONE 'B'**

*Duplicate  
copy*



PALM BEACH FARMS COMPANY PLAT NO. 3  
BLOCK 36 - P.B. 2, PG. 46

PALM BEACH FARMS COMPANY PLAT NO. 3  
BLOCK 36 - P.B. 2, PG. 48

**NOTES**  
All bearings shown hereon are relative to an assumed  
meridian with the South Line of Sec. 31-44-42 bearing S 87° 57' 15" E.  
Building Setback Lines shall be as required by Palm Beach  
County Zoning Regulations.  
There shall be no buildings or any kind of construction or trees  
or shrubs placed on Utility Easements and/or Drainage Easements.  
● denotes Permanent Reference Monument  
○ denotes Permanent Control Point

EVONS ROAD

0309-00  
37/102

LEXINGTON I OF SHERBROOKE

P.B. 32 - PG. 195 - 198, INCL.