

MALLET HILL OF WELLINGTON COUNTRYPLACE - P.U.D.

IN PART OF SECTION 21, TWP. 44 S., RGE. 41E.
PALM BEACH COUNTY, FLORIDA
IN 2 SHEETS SHEET NO. 2

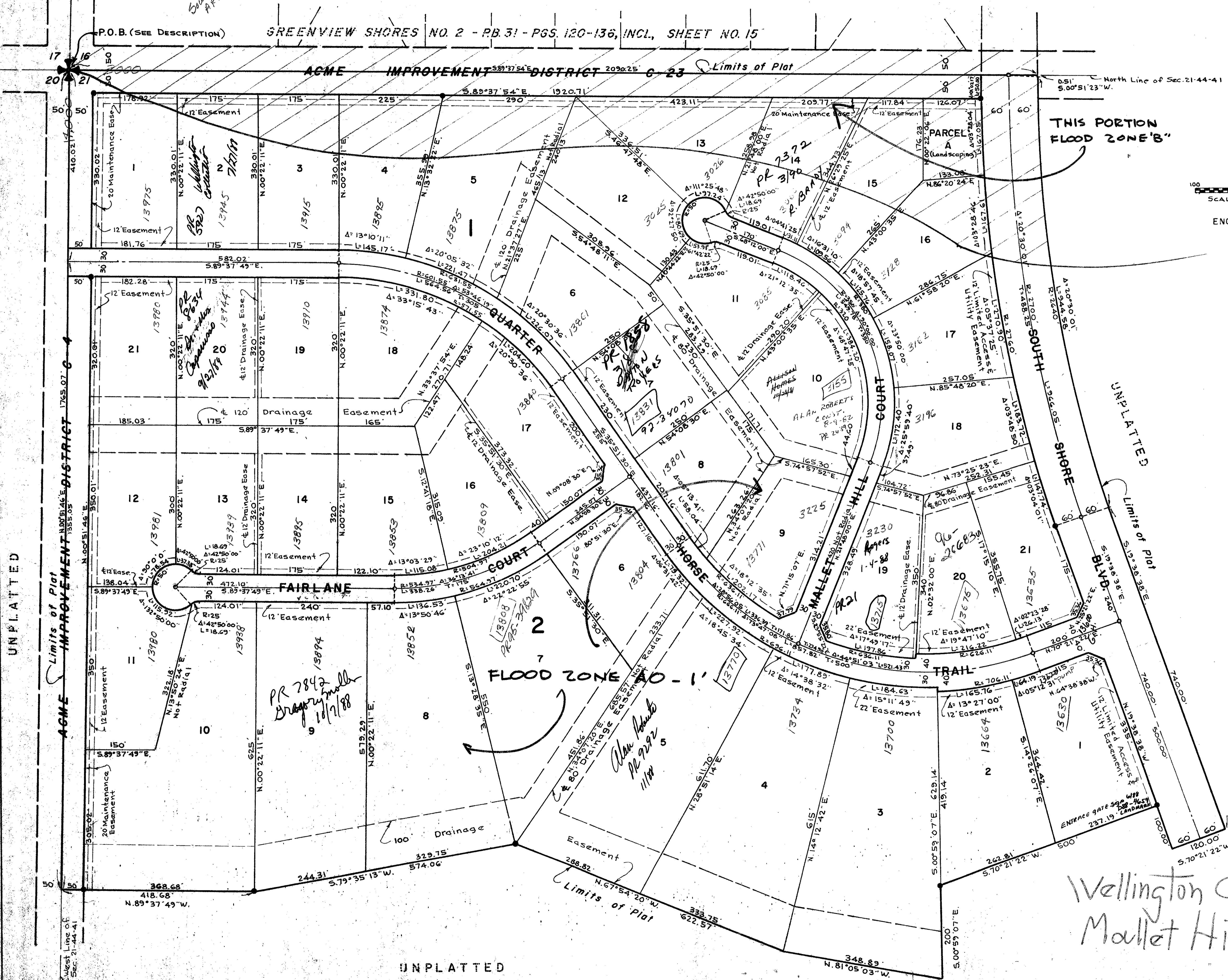
124



STATE OF FLORIDA
COUNTY OF PALM BEACH
This Plat was filed for record at _____ M.
this day of _____, 1979,
and duly recorded in Plat Book No. _____
on page _____
JOHN B. DUNKLE, Clerk Circuit Court
By _____ D.C.

SCALE IN FEET SCALE: 1"=100'

GEE & JENSON
ENGINEERS-ARCHITECTS-PLANNERS, INC.
WEST PALM BEACH, FLORIDA
JULY 1978



NOTE

All bearings shown hereon are relative to an assumed meridian used throughout Wellington.
Building Setback Lines shall be as required by Palm Beach County Zoning Regulations.
There shall be no buildings or other structures placed on Utility Easements.
There shall be no buildings or any kind of construction or trees or shrubs placed on Drainage Easements.
Easements are for Public Utilities, unless otherwise noted.
● denotes Permanent Reference Monument.
○ denotes Permanent Control Point.
Where Utility Easements and Drainage Easements cross, Drainage Easements shall take precedent.

RE/PUD
IMPACT FEE
RET. 76-60
80% - SF UNDER 2000 sq ft
10% - SF OVER 2000 sq ft
50% - SF OVER 2000 sq ft
149.66 PER BAR
COLLECTOR
UNPLATTED

Wellington Countryplace
Mallet Hill
0333-001
37/124

UNPLATTED

UNPLATTED