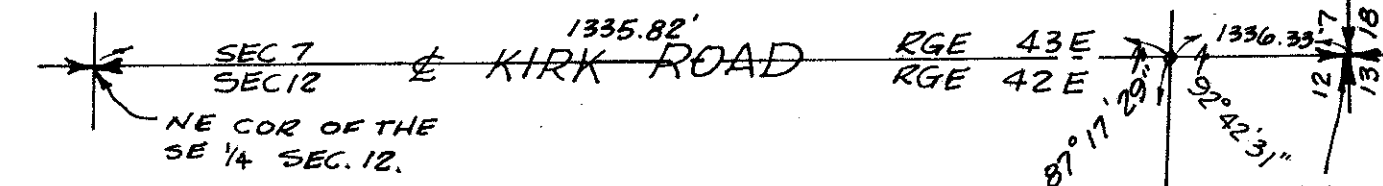


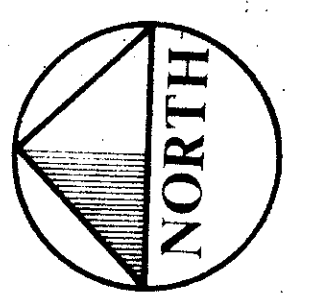
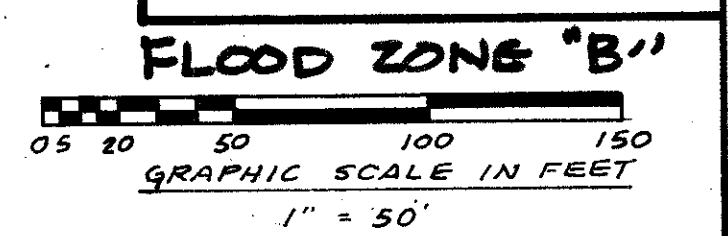
PLAT OF
FOREST LAKES

BEING IN SECTION 12, TOWNSHIP 44 SOUTH,
RANGE 42 EAST, PALM BEACH COUNTY, FLA.
APRIL, 1979
SHEET 2 IN 2 SHEETS

SEE BACK

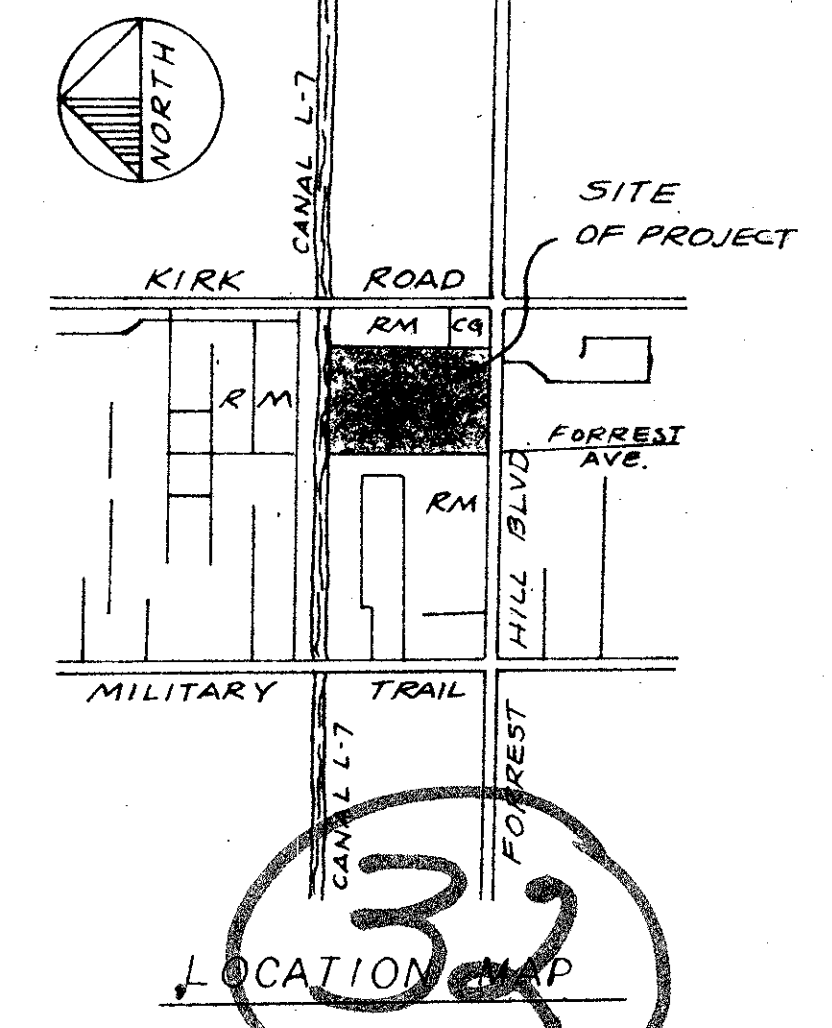


126



CURVE DATA

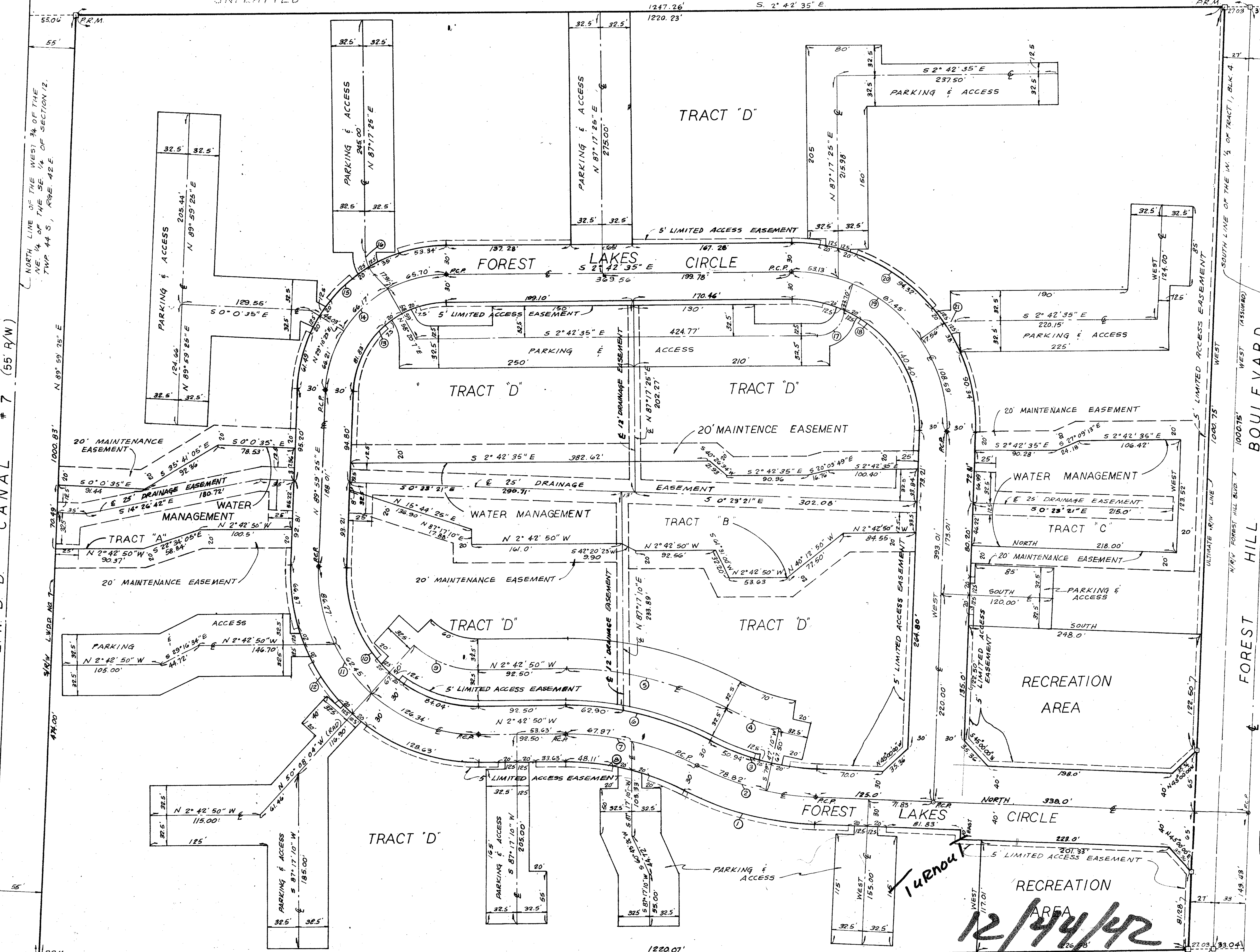
CURVE#	Δ	RADIUS	ARC	TAN	CHORD
(1)	25-16-02	330'	145.53'	73.97'	144.35'
(2)	25-16-02	300'	132.30'	67.24'	131.23'
(3)	25-16-02	270'	119.07'	60.52'	118.11'
(4)	15-03-12	232.5'	61.08'	30.72'	60.91'
(5)	27-58-52	367.5'	179.47'	91.56'	177.70'
(6)	27-58-52	330'	161.16'	82.22'	159.56'
(7)	27-58-52	300'	146.51'	74.75'	145.06'
(8)	27-58-52	270'	131.86'	67.27'	130.55'
(9)	42-34-46	102.5'	76.17'	39.94'	74.43'
(10)	92-42-15	140'	226.52'	146.77'	202.61'
(11)	92-42-15	170'	275.06'	178.22'	246.02'
(12)	92-42-15	200'	323.60'	209.67'	289.44'
(13)	87-18-00	100'	152.37'	95.40'	138.05'
(14)	87-18-00	130'	198.08'	124.01'	179.47'
(15)	87-18-00	160'	243.79'	152.63'	220.88'
(16)	43-1-13	37.5'	28.15'	14.78'	27.50'
(17)	65-22-02	37.5'	42.78'	24.06'	40.50'
(18)	92-42-35	135'	218.44'	141.54'	195.38'
(19)	92-42-35	165'	264.98'	172.99'	238.80'
(20)	92-42-35	195'	315.52'	204.45'	282.22'
(21)	35-00-00	37.5'	22.91'	11.82'	22.55'



1000-063

This Instrument Was Prepared by:
Anthony J. Michuda
2829 Okeechobee Boulevard
West Palm Beach, Florida 33411
3/7/26

JAMES D. CARLTON, INC.
ENGINEERS • LAND SURVEYORS
2829 OKEECHOBEE BLVD • WEST PALM BEACH, FLA.



UNPLATTED

ARNOLD PARK
PG. 23, PG. 34

MELALEUCA PARK
PG. 24, PG. 4

Forest Lakes

12/44/92