

STATE OF FLORIDA  
COUNTY OF PALM BEACH  
THIS PLAT WAS FILED FOR  
RECORD AT \_\_\_\_\_ M.  
THIS \_\_\_\_\_ DAY OF \_\_\_\_\_  
A.D., 1976 AND DULY RE-  
CORDED IN PLAT BOOK \_\_\_\_\_  
ON PAGES \_\_\_\_\_ AND \_\_\_\_\_  
JOHN B. DUNKLE, CLERK  
CIRCUIT COURT BY: \_\_\_\_\_ DC



0' 50' 100'  
GRAPHIC SCALE

THE TIMBERS  
OF BOCA

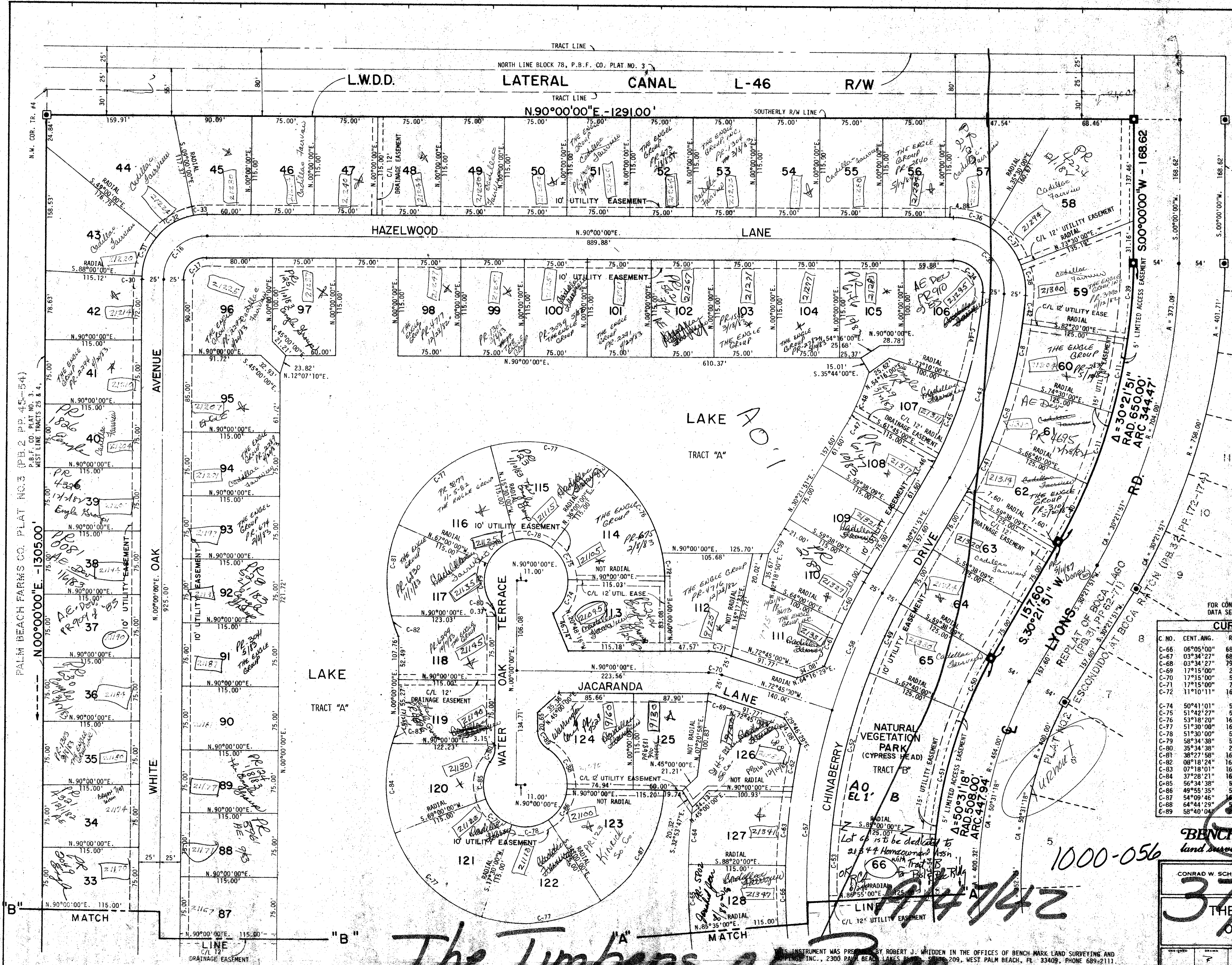
FOR CONTINUATION OF CURVE  
DATA SEE SHEET 2 OF 3.

C. NO.	CENT. ANG.	RADIUS	ARC	CHORD	TANGENT
C-66	06°05'00"	683.00'	72.52'	72.48'	36.29'
C-67	03°34'27"	683.00'	42.61'	42.60'	21.31'
C-68	03°34'27"	798.00'	49.78'	49.77'	24.90'
C-69	17°15'00"	25.00'	7.53'	7.50'	3.79'
C-70	17°15'00"	50.00'	15.05'	15.00'	7.58'
C-71	17°15'00"	75.00'	22.58'	22.50'	11.38'
C-72	11°10'11"	165.00'	32.17'	32.12'	16.13'
C-74	50°41'01"	50.00'	44.23'	42.80'	23.68'
C-75	51°42'27"	50.00'	45.12'	43.61'	24.23'
C-76	53°18'20"	165.00'	153.51'	148.03'	82.82'
C-77	51°30'08"	165.00'	148.31'	143.37'	79.59'
C-78	51°30'00"	50.00'	44.94'	43.44'	24.12'
C-79	58°34'38"	50.00'	51.12'	48.92'	28.05'
C-80	35°34'38"	25.00'	15.52'	15.28'	8.02'
C-81	38°27'58"	165.00'	110.77'	108.71'	57.57'
C-82	08°18'24"	165.00'	28.92'	23.90'	11.98'
C-83	07°18'01"	165.00'	21.02'	21.01'	10.53'
C-84	37°28'21"	165.00'	107.91'	106.00'	55.97'
C-85	56°34'38"	50.00'	43.57'	42.39'	26.91'
C-86	49°55'35"	50.00'	43.57'	42.39'	23.28'
C-87	54°09'46"	165.00'	155.98'	150.25'	84.37'
C-88	64°44'29"	165.00'	156.50'	151.54'	91.70'
C-89	58°40'04"	165.00'	156.50'	151.54'	91.70'

BENCH MARK  
land surveying and mapping, inc.

CONRAD W. SCHAEFER CONSULTING ENGINEERS, INC.  
37/158  
THE TIMBERS  
OF BOCA

DATE	SCALE	CHECKED	APP. NO.	DRAWING NO.
7-7-78	1"=50'			33



The Timbers of Boca

THIS INSTRUMENT WAS PREPARED BY ROBERT J. WHIDDEN IN THE OFFICES OF BENCH MARK LAND SURVEYING AND MAPPING, INC., 2300 PALM BEACH LAKES BLVD., SUITE 209, WEST PALM BEACH, FL 33409, PHONE 689-2111