

# DEL AIRE GOLF CLUB FIRST ADDITION

A PLAT OF A PORTION OF SECT. 25, TWP. 46 S., RGE. 42 E., & SECT. 30, TWP. 46 S., RGE. 43 E.  
ALSO BEING A REPLAT OF A PORTION OF MODEL LAND COMPANY'S SUBDIVISION, AS RECORDED  
IN PLAT BOOK 6, PAGE 52, PUBLIC RECORDS OF PALM BEACH COUNTY, FLORIDA

PALM BEACH COUNTY, FLORIDA

JOHN A. GRANT JR. INC. CONSULTING ENGINEERS & LAND SURVEYORS BOCA RATON, FLORIDA  
SHEET 3 OF 4 APRIL 1978

P.R.M. Denotes Permanent Reference Monument  
P.C.P. Denotes Permanent Control Point  
U.E. Denotes Utility Easement  
D.E. Denotes Drainage Easement

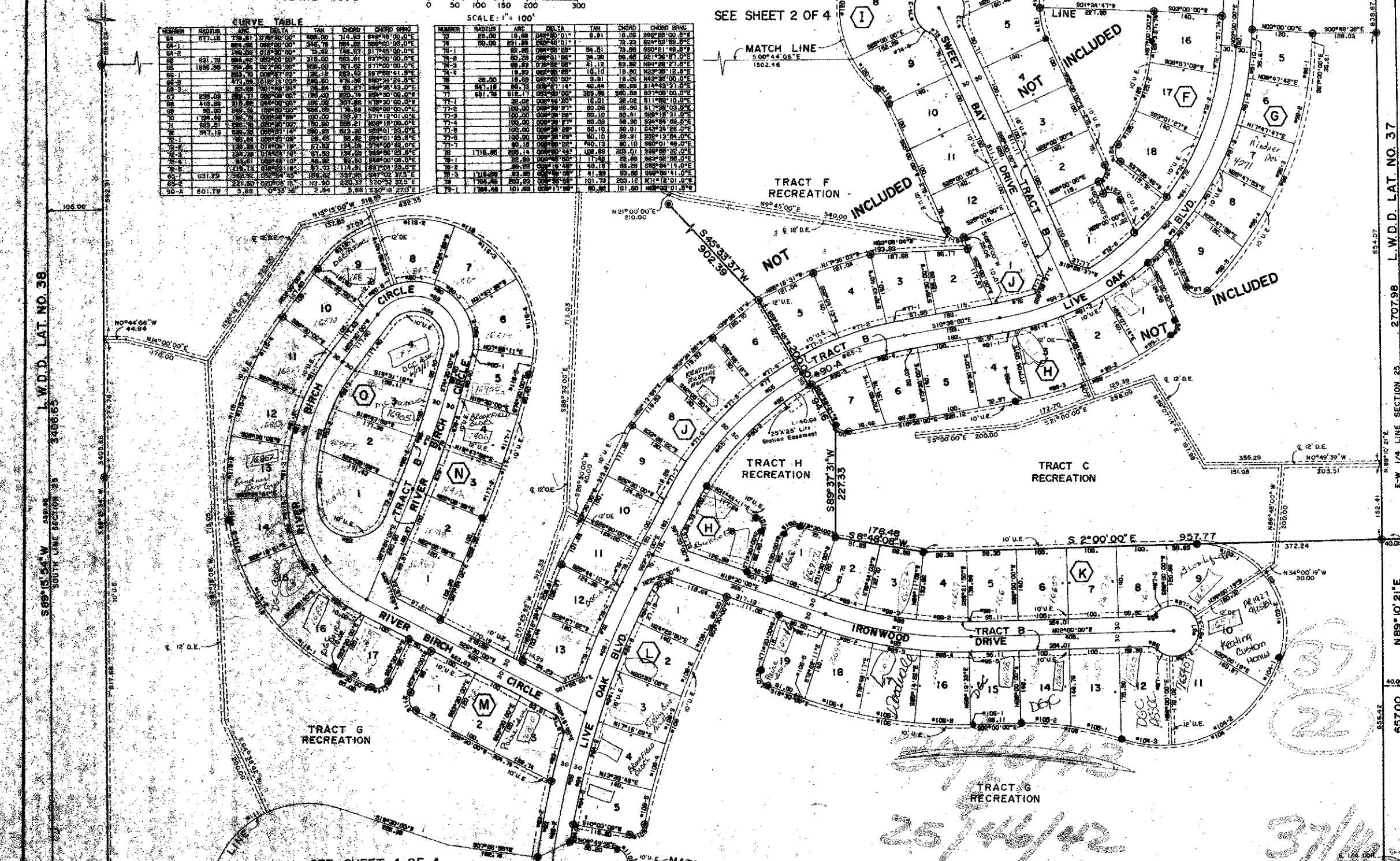
## 165

**CURVE TABLE**

| NUMBER | RADIUS | ARC    | DELTA     | TAN  | CHORD  | CHORD BRNG. |
|--------|--------|--------|-----------|------|--------|-------------|
| 68-1   | 117.18 | 117.18 | 90°00'00" | 0.00 | 117.18 | 000°00'00"  |
| 68-2   | 117.18 | 117.18 | 90°00'00" | 0.00 | 117.18 | 000°00'00"  |
| 68-3   | 117.18 | 117.18 | 90°00'00" | 0.00 | 117.18 | 000°00'00"  |
| 68-4   | 117.18 | 117.18 | 90°00'00" | 0.00 | 117.18 | 000°00'00"  |
| 68-5   | 117.18 | 117.18 | 90°00'00" | 0.00 | 117.18 | 000°00'00"  |
| 68-6   | 117.18 | 117.18 | 90°00'00" | 0.00 | 117.18 | 000°00'00"  |
| 68-7   | 117.18 | 117.18 | 90°00'00" | 0.00 | 117.18 | 000°00'00"  |
| 68-8   | 117.18 | 117.18 | 90°00'00" | 0.00 | 117.18 | 000°00'00"  |
| 68-9   | 117.18 | 117.18 | 90°00'00" | 0.00 | 117.18 | 000°00'00"  |
| 68-10  | 117.18 | 117.18 | 90°00'00" | 0.00 | 117.18 | 000°00'00"  |
| 68-11  | 117.18 | 117.18 | 90°00'00" | 0.00 | 117.18 | 000°00'00"  |
| 68-12  | 117.18 | 117.18 | 90°00'00" | 0.00 | 117.18 | 000°00'00"  |
| 68-13  | 117.18 | 117.18 | 90°00'00" | 0.00 | 117.18 | 000°00'00"  |
| 68-14  | 117.18 | 117.18 | 90°00'00" | 0.00 | 117.18 | 000°00'00"  |
| 68-15  | 117.18 | 117.18 | 90°00'00" | 0.00 | 117.18 | 000°00'00"  |
| 68-16  | 117.18 | 117.18 | 90°00'00" | 0.00 | 117.18 | 000°00'00"  |
| 68-17  | 117.18 | 117.18 | 90°00'00" | 0.00 | 117.18 | 000°00'00"  |
| 68-18  | 117.18 | 117.18 | 90°00'00" | 0.00 | 117.18 | 000°00'00"  |
| 68-19  | 117.18 | 117.18 | 90°00'00" | 0.00 | 117.18 | 000°00'00"  |
| 68-20  | 117.18 | 117.18 | 90°00'00" | 0.00 | 117.18 | 000°00'00"  |

**CURVE TABLE**

| NUMBER | RADIUS | ARC   | DELTA     | TAN  | CHORD | CHORD BRNG. |
|--------|--------|-------|-----------|------|-------|-------------|
| 70     | 50.00  | 50.00 | 90°00'00" | 0.00 | 50.00 | 000°00'00"  |
| 71     | 50.00  | 50.00 | 90°00'00" | 0.00 | 50.00 | 000°00'00"  |
| 72     | 50.00  | 50.00 | 90°00'00" | 0.00 | 50.00 | 000°00'00"  |
| 73     | 50.00  | 50.00 | 90°00'00" | 0.00 | 50.00 | 000°00'00"  |
| 74     | 50.00  | 50.00 | 90°00'00" | 0.00 | 50.00 | 000°00'00"  |
| 75     | 50.00  | 50.00 | 90°00'00" | 0.00 | 50.00 | 000°00'00"  |
| 76     | 50.00  | 50.00 | 90°00'00" | 0.00 | 50.00 | 000°00'00"  |
| 77     | 50.00  | 50.00 | 90°00'00" | 0.00 | 50.00 | 000°00'00"  |
| 78     | 50.00  | 50.00 | 90°00'00" | 0.00 | 50.00 | 000°00'00"  |
| 79     | 50.00  | 50.00 | 90°00'00" | 0.00 | 50.00 | 000°00'00"  |
| 80     | 50.00  | 50.00 | 90°00'00" | 0.00 | 50.00 | 000°00'00"  |
| 81     | 50.00  | 50.00 | 90°00'00" | 0.00 | 50.00 | 000°00'00"  |
| 82     | 50.00  | 50.00 | 90°00'00" | 0.00 | 50.00 | 000°00'00"  |
| 83     | 50.00  | 50.00 | 90°00'00" | 0.00 | 50.00 | 000°00'00"  |
| 84     | 50.00  | 50.00 | 90°00'00" | 0.00 | 50.00 | 000°00'00"  |
| 85     | 50.00  | 50.00 | 90°00'00" | 0.00 | 50.00 | 000°00'00"  |
| 86     | 50.00  | 50.00 | 90°00'00" | 0.00 | 50.00 | 000°00'00"  |
| 87     | 50.00  | 50.00 | 90°00'00" | 0.00 | 50.00 | 000°00'00"  |
| 88     | 50.00  | 50.00 | 90°00'00" | 0.00 | 50.00 | 000°00'00"  |
| 89     | 50.00  | 50.00 | 90°00'00" | 0.00 | 50.00 | 000°00'00"  |
| 90     | 50.00  | 50.00 | 90°00'00" | 0.00 | 50.00 | 000°00'00"  |



**CURVE TABLE**

| NUMBER | RADIUS | ARC   | DELTA     | TAN  | CHORD | CHORD BRNG. |
|--------|--------|-------|-----------|------|-------|-------------|
| 91     | 50.00  | 50.00 | 90°00'00" | 0.00 | 50.00 | 000°00'00"  |
| 92     | 50.00  | 50.00 | 90°00'00" | 0.00 | 50.00 | 000°00'00"  |
| 93     | 50.00  | 50.00 | 90°00'00" | 0.00 | 50.00 | 000°00'00"  |
| 94     | 50.00  | 50.00 | 90°00'00" | 0.00 | 50.00 | 000°00'00"  |
| 95     | 50.00  | 50.00 | 90°00'00" | 0.00 | 50.00 | 000°00'00"  |
| 96     | 50.00  | 50.00 | 90°00'00" | 0.00 | 50.00 | 000°00'00"  |
| 97     | 50.00  | 50.00 | 90°00'00" | 0.00 | 50.00 | 000°00'00"  |
| 98     | 50.00  | 50.00 | 90°00'00" | 0.00 | 50.00 | 000°00'00"  |
| 99     | 50.00  | 50.00 | 90°00'00" | 0.00 | 50.00 | 000°00'00"  |
| 100    | 50.00  | 50.00 | 90°00'00" | 0.00 | 50.00 | 000°00'00"  |
| 101    | 50.00  | 50.00 | 90°00'00" | 0.00 | 50.00 | 000°00'00"  |
| 102    | 50.00  | 50.00 | 90°00'00" | 0.00 | 50.00 | 000°00'00"  |
| 103    | 50.00  | 50.00 | 90°00'00" | 0.00 | 50.00 | 000°00'00"  |
| 104    | 50.00  | 50.00 | 90°00'00" | 0.00 | 50.00 | 000°00'00"  |
| 105    | 50.00  | 50.00 | 90°00'00" | 0.00 | 50.00 | 000°00'00"  |
| 106    | 50.00  | 50.00 | 90°00'00" | 0.00 | 50.00 | 000°00'00"  |
| 107    | 50.00  | 50.00 | 90°00'00" | 0.00 | 50.00 | 000°00'00"  |
| 108    | 50.00  | 50.00 | 90°00'00" | 0.00 | 50.00 | 000°00'00"  |
| 109    | 50.00  | 50.00 | 90°00'00" | 0.00 | 50.00 | 000°00'00"  |
| 110    | 50.00  | 50.00 | 90°00'00" | 0.00 | 50.00 | 000°00'00"  |
| 111    | 50.00  | 50.00 | 90°00'00" | 0.00 | 50.00 | 000°00'00"  |
| 112    | 50.00  | 50.00 | 90°00'00" | 0.00 | 50.00 | 000°00'00"  |
| 113    | 50.00  | 50.00 | 90°00'00" | 0.00 | 50.00 | 000°00'00"  |
| 114    | 50.00  | 50.00 | 90°00'00" | 0.00 | 50.00 | 000°00'00"  |
| 115    | 50.00  | 50.00 | 90°00'00" | 0.00 | 50.00 | 000°00'00"  |
| 116    | 50.00  | 50.00 | 90°00'00" | 0.00 | 50.00 | 000°00'00"  |
| 117    | 50.00  | 50.00 | 90°00'00" | 0.00 | 50.00 | 000°00'00"  |
| 118    | 50.00  | 50.00 | 90°00'00" | 0.00 | 50.00 | 000°00'00"  |
| 119    | 50.00  | 50.00 | 90°00'00" | 0.00 | 50.00 | 000°00'00"  |
| 120    | 50.00  | 50.00 | 90°00'00" | 0.00 | 50.00 | 000°00'00"  |

**CURVE TABLE**

| NUMBER | RADIUS | ARC   | DELTA     | TAN  | CHORD | CHORD BRNG. |
|--------|--------|-------|-----------|------|-------|-------------|
| 121    | 50.00  | 50.00 | 90°00'00" | 0.00 | 50.00 | 000°00'00"  |
| 122    | 50.00  | 50.00 | 90°00'00" | 0.00 | 50.00 | 000°00'00"  |
| 123    | 50.00  | 50.00 | 90°00'00" | 0.00 | 50.00 | 000°00'00"  |
| 124    | 50.00  | 50.00 | 90°00'00" | 0.00 | 50.00 | 000°00'00"  |
| 125    | 50.00  | 50.00 | 90°00'00" | 0.00 | 50.00 | 000°00'00"  |
| 126    | 50.00  | 50.00 | 90°00'00" | 0.00 | 50.00 | 000°00'00"  |
| 127    | 50.00  | 50.00 | 90°00'00" | 0.00 | 50.00 | 000°00'00"  |
| 128    | 50.00  | 50.00 | 90°00'00" | 0.00 | 50.00 | 000°00'00"  |
| 129    | 50.00  | 50.00 | 90°00'00" | 0.00 | 50.00 | 000°00'00"  |
| 130    | 50.00  | 50.00 | 90°00'00" | 0.00 | 50.00 | 000°00'00"  |
| 131    | 50.00  | 50.00 | 90°00'00" | 0.00 | 50.00 | 000°00'00"  |
| 132    | 50.00  | 50.00 | 90°00'00" | 0.00 | 50.00 | 000°00'00"  |
| 133    | 50.00  | 50.00 | 90°00'00" | 0.00 | 50.00 | 000°00'00"  |
| 134    | 50.00  | 50.00 | 90°00'00" | 0.00 | 50.00 | 000°00'00"  |
| 135    | 50.00  | 50.00 | 90°00'00" | 0.00 | 50.00 | 000°00'00"  |
| 136    | 50.00  | 50.00 | 90°00'00" | 0.00 | 50.00 | 000°00'00"  |
| 137    | 50.00  | 50.00 | 90°00'00" | 0.00 | 50.00 | 000°00'00"  |
| 138    | 50.00  | 50.00 | 90°00'00" | 0.00 | 50.00 | 000°00'00"  |
| 139    | 50.00  | 50.00 | 90°00'00" | 0.00 | 50.00 | 000°00'00"  |
| 140    | 50.00  | 50.00 | 90°00'00" | 0.00 | 50.00 | 000°00'00"  |

Note: There will be no building, trees or shrubs placed on easements.

This instrument prepared by  
John A. Grant Jr., John A. Grant, Surveyors  
3333 North Federal Highway, Boca Raton, Fla. 33431

MODEL LAND CO.'S S.D.  
PLAT BOOK 6, PAGE 52

25/46/42

37/42

1000 P.P.S.

SECTION 25, TWP. 46 S., RGE. 42 E., PLAT NO. 39

L.W.D.D. LAT. NO. 37

E-W 1/4 LINE SECTION 25 2707.98 L.W.D.D. LAT. NO. 37

N 89° 10' 21" E

657.00

40.00

655.42

N 89° 10' 21" E

2707.98

L.W.D.D. LAT. NO. 37