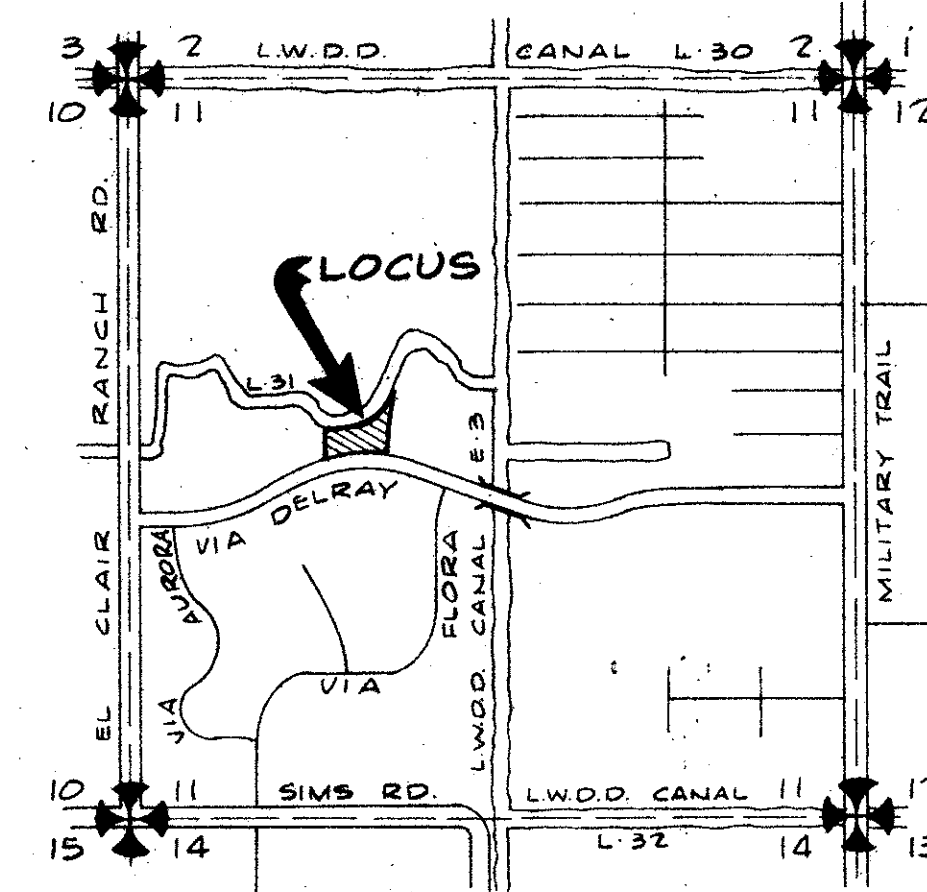


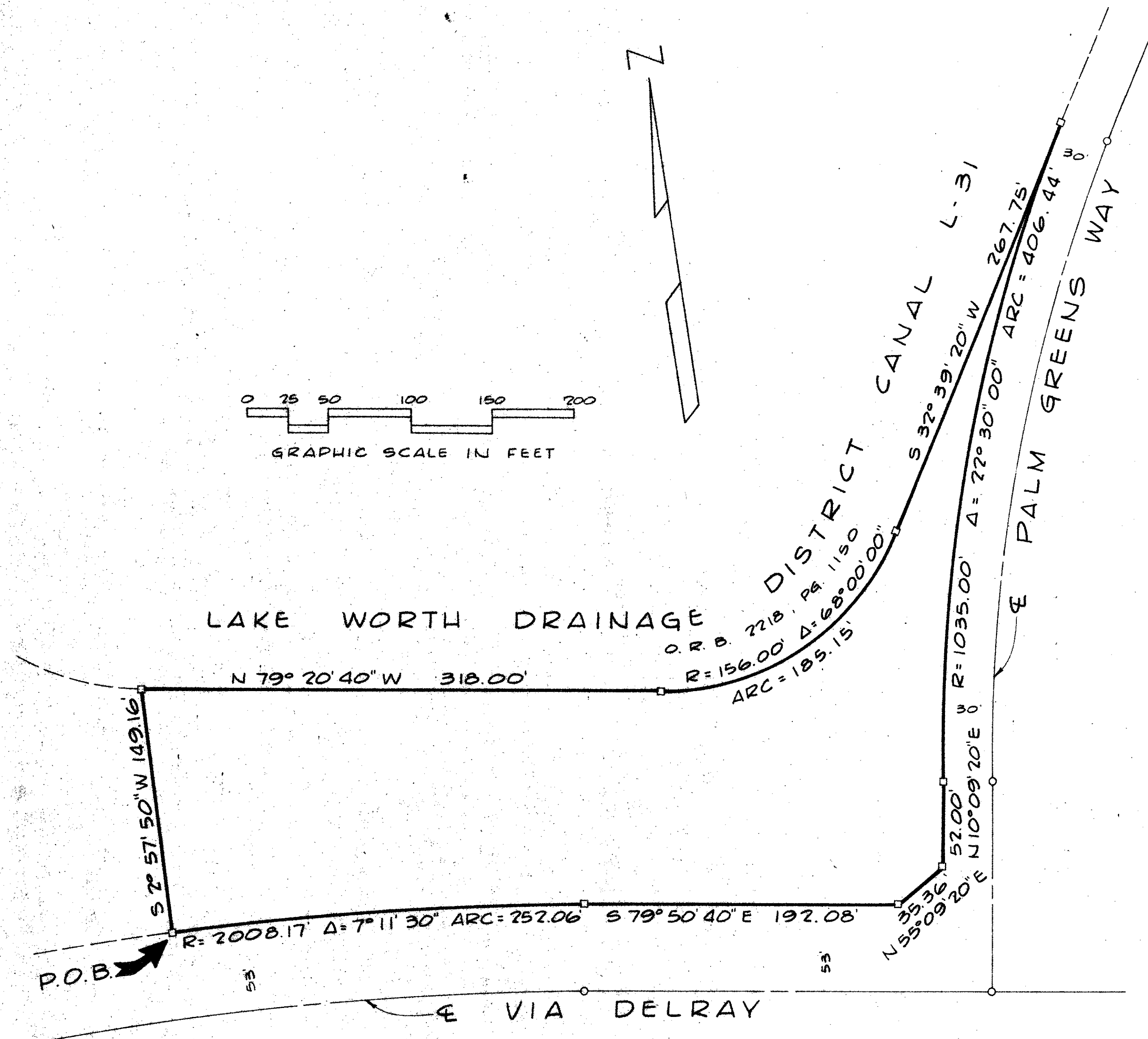
A PLANNED UNIT DEVELOPMENT
PLAT 25 VILLADELRAY

A PARCEL OF LAND IN SECTION 11, TOWNSHIP 46 SOUTH, RANGE 42 EAST
 PALM BEACH COUNTY, FLORIDA
 IN TWO SHEETS - SHEET NO. TWO



LOCATION MAP
 NOT TO SCALE

189



VILLADELRAY SECTION 6
 P.B. 33, PP. 194 & 195

PLAT II VILLADELRAY
 P.B. 30, PP. 77, 78 & 79
 TRACT "F"

NOTES

1. BEARINGS CITED HEREON ARE IN THE MERIDIAN OF PLAT 2 VILLADELRAY (PLAT BOOK 30, PAGES 77, 78 AND 79).
2. BUILDING SETBACK LINES WILL BE AS REQUIRED THE PALM BEACH COUNTY ZONING REGULATIONS.
3. PERMANENT REFERENCE MONUMENTS (P.R.M.) ARE DENOTED THUS: □
4. PERMANENT CONTROL POINTS (P.C.P.) ARE DENOTED THUS: ○

PLAT II VILLADELRAY
 P.B. 30, PP. 77, 78 & 79

11/46/42

0324-302 37/189

36

PLAT 25 Villadelray

Field Book No.	Pg.	ROBERT E. OWEN & ASSOCIATES, INC.	Job No.	77-1126
Design	W. MITZELFELD	ENGINEERS · PLANNERS · SURVEYORS	Scale	1" = 50'
Drawn	M. SIKORA	WEST PALM BEACH FLORIDA	Date	AUGUST, 1978
Checked	W. MITZELFELD		Sheet	2
			of	2
			File No.	BF-2266