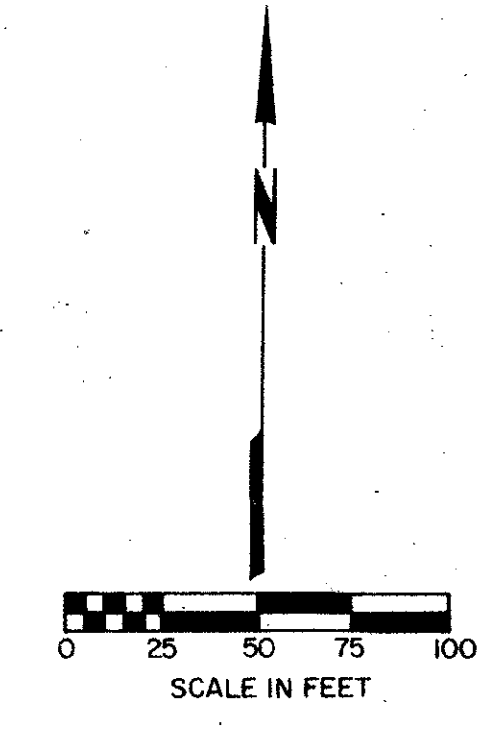


STATE OF FLORIDA
 COUNTY OF PALM BEACH
 THIS PLAT WAS FILED FOR
 RECORD AT _____
 THIS _____ DAY OF _____
 AD., 1979 AND DULY RECORDED
 IN PLAT BOOK _____
 ON PAGES _____ AND _____
 JOHN B. DUNKLE, CLERK
 CIRCUIT COURT
 BY: _____ D.C.

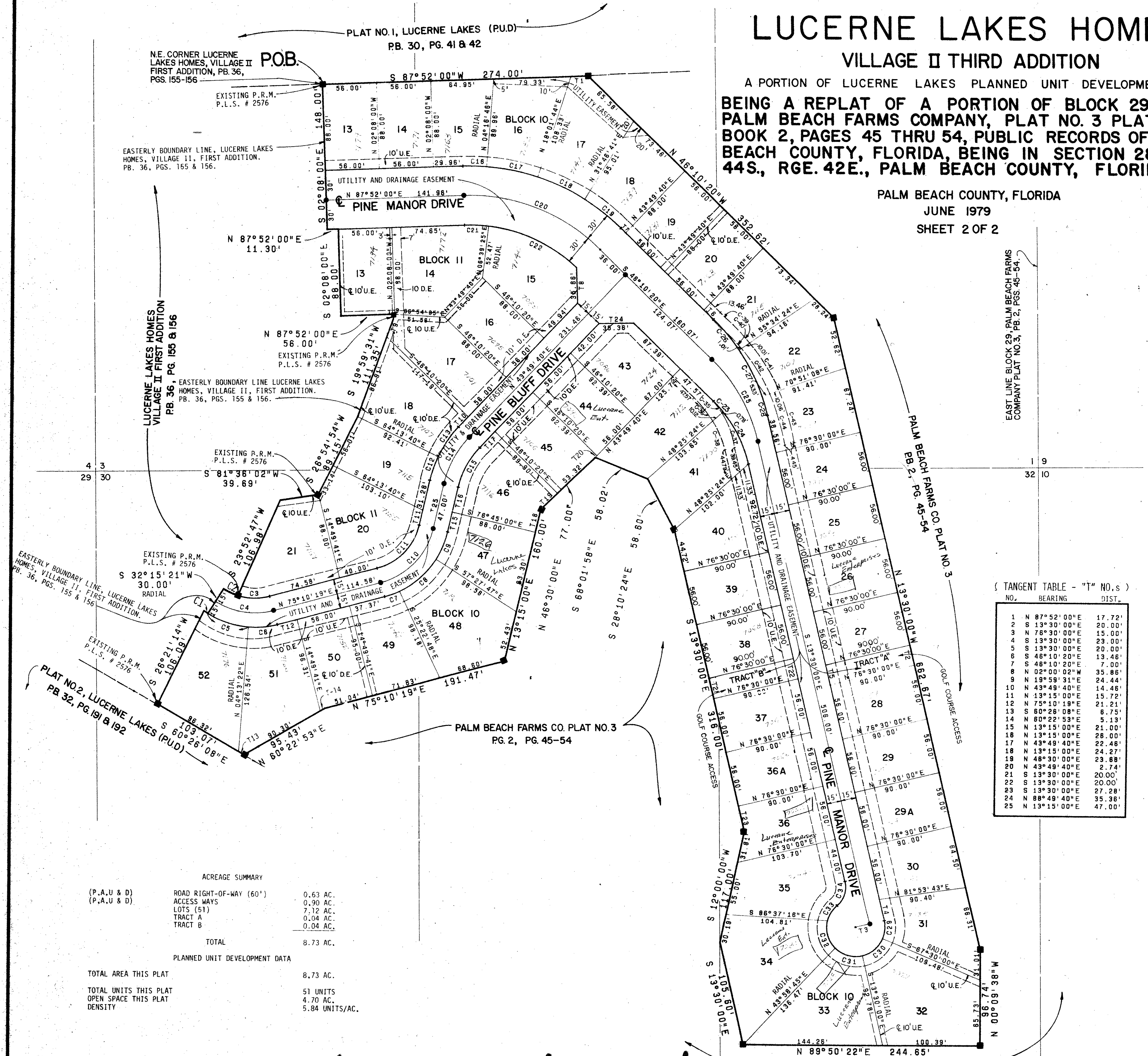


LUCERNE LAKES HOMES

VILLAGE II THIRD ADDITION

A PORTION OF LUCERNE LAKES PLANNED UNIT DEVELOPMENT
 BEING A REPLAT OF A PORTION OF BLOCK 29 OF
 PALM BEACH FARMS COMPANY, PLAT NO. 3 PLAT
 BOOK 2, PAGES 45 THRU 54, PUBLIC RECORDS OF PALM
 BEACH COUNTY, FLORIDA, BEING IN SECTION 28, TWP.
 44S., RGE. 42E., PALM BEACH COUNTY, FLORIDA.

PALM BEACH COUNTY, FLORIDA
 JUNE 1979
 SHEET 2 OF 2



CURVE TABLE - "C" NO. S

NO.	CH. BRNG.	CHORD	RADIUS	DELTA	ARC	TANGENT
1	S 58°15'46"E	5.00'	276.16'	01°02'14"	5.00'	2.50'
2	S 65°31'33"E	18.45'	60.74'	15°33'49"	18.50'	9.30'
3	S 89°04'04"E	33.00'	60.74'	31°31'13"	33.42'	17.14'
4	S 81°17'10"E	60.51'	75.74'	47°05'02"	62.24'	33.00'
5	S 71°45'38"E	43.96'	90.74'	28°01'59"	44.40'	22.65'
6	N 84°41'51"E	30.03'	90.74'	19°03'03"	30.17'	15.23'
7	N 69°53'45"E	16.55'	90.01'	10°33'07"	16.58'	8.31'
8	N 48°34'42"E	49.74'	90.01'	32°04'59"	50.40'	25.88'
9	N 22°53'37"E	30.16'	90.01'	19°17'13"	30.30'	15.29'
10	N 44°12'39"E	77.18'	75.01'	61°55'19"	81.06'	45.00'
11	N 44°12'40"E	61.74'	60.01'	61°55'19"	64.85'	36.00'
12	N 19°30'40"E	25.61'	117.43'	12°31'20"	25.66'	12.88'
13	N 34°48'00"E	36.85'	117.43'	18°03'20"	37.01'	18.66'
14	N 28°32'20"E	54.02'	102.43'	30°34'40"	54.66'	28.00'
15	N 28°32'20"E	46.11'	87.43'	30°34'40"	46.66'	23.90'
16	S 88°55'37"E	24.99'	223.36'	06°24'46"	25.00'	12.51'
17	S 78°50'45"E	53.47'	223.36'	13°44'57"	53.60'	26.93'
18	S 65°05'48"E	53.47'	223.36'	13°44'57"	53.60'	26.93'
19	S 52°11'49"E	46.89'	223.36'	12°02'59"	46.97'	23.57'
20	S 69°09'10"E	150.98'	193.36'	45°57'40"	155.11'	82.00'
21	S 87°44'18"E	25.04'	163.36'	08°47'25"	25.08'	12.56'
22	S 65°35'10"E	99.65'	163.36'	35°30'51"	101.29'	52.32'
23	S 42°57'07"E	14.80'	130.00'	06°28'25"	14.81'	7.31'
24	S 26°36'57"E	59.00'	130.00'	28°13'55"	59.52'	30.29'
25	S 29°50'10"E	95.96'	170.59'	32°40'20"	97.28'	50.00'
26	S 40°17'58"E	40.93'	200.00'	11°44'44"	41.00'	20.57'
27	S 26°47'14"E	53.18'	200.00'	15°16'44"	53.33'	26.83'
28	S 16°19'26"E	19.71'	200.00'	05°38'52"	19.71'	9.87'
29	N 04°30'00"E	18.54'	30.00'	36°00'00"	18.85'	9.75'
30	N 49°30'00"E	27.24'	30.00'	54°00'00"	28.27'	15.29'
31	S 74°45'38"E	28.85'	30.00'	57°28'45"	30.10'	16.45'
32	S 17°00'38"E	29.10'	30.00'	58°01'15"	30.38'	16.64'
33	N 30°43'58"E	19.27'	30.00'	37°27'52"	19.62'	10.17'
34	N 17°58'56"E	28.11'	25.00'	62°57'52"	27.47'	15.31'
35	N 39°53'46"E	14.61'	66.80'	12°33'14"	14.64'	7.35'
36	S 39°11'23"E	13.81'	56.80'	13°58'01"	13.85'	6.96'
37	S 23°33'31"W	23.34'	66.80'	20°07'06"	23.46'	11.85'
38	S 22°51'07"E	18.46'	56.80'	18°42'19"	18.54'	9.36'
39	N 41°38'55"W	43.09'	273.20'	09°02'47"	43.14'	21.61'
40	S 41°42'00"E	41.04'	263.20'	08°56'38"	41.09'	20.59'
41	N 31°09'12"W	56.85'	273.20'	11°56'40"	56.95'	28.58'
42	S 31°19'11"E	54.19'	263.20'	11°49'01"	54.28'	27.24'
43	N 19°20'27"W	55.60'	273.20'	11°40'52"	55.70'	27.95'
44	S 19°27'22"E	54.62'	263.20'	11°54'41"	54.72'	27.46'

TANGENT TABLE - "T" NO. S

NO.	BEARING	DIST.
1	N 87°52'00"E	17.72'
2	S 13°30'00"E	20.00'
3	N 76°30'00"E	15.00'
4	S 13°30'00"E	23.00'
5	S 13°30'00"E	20.00'
6	S 48°10'20"E	13.46'
7	S 48°10'20"E	7.00'
8	N 02°00'02"W	35.88'
9	N 19°59'31"E	24.44'
10	N 43°49'40"E	14.46'
11	N 13°15'00"E	15.72'
12	N 75°10'19"E	21.21'
13	S 60°28'08"E	6.75'
14	N 80°22'53"E	5.13'
15	N 13°15'00"E	21.00'
16	N 13°15'00"E	28.00'
17	N 43°49'40"E	22.46'
18	N 13°15'00"E	24.27'
19	N 43°49'40"E	23.88'
20	N 43°49'40"E	2.74'
21	S 13°30'00"E	20.00'
22	S 13°30'00"E	20.00'
23	S 13°30'00"E	27.28'
24	N 88°49'40"E	35.36'
25	N 13°15'00"E	47.00'

ACREAGE SUMMARY

(P.A.U & D)	ROAD RIGHT-OF-WAY (60')	0.63 AC.
(P.A.U & D)	ACCESS WAYS	0.90 AC.
	LOTS (51)	7.12 AC.
	TRACT A	0.04 AC.
	TRACT B	0.04 AC.
	TOTAL	8.73 AC.

PLANNED UNIT DEVELOPMENT DATA

TOTAL AREA THIS PLAT	8.73 AC.
TOTAL UNITS THIS PLAT	51 UNITS
OPEN SPACE THIS PLAT	4.70 AC.
DENSITY	5.84 UNITS/AC.

LUCERNE LAKES HOMES VILLAGE II THIRD ADDITION

PALM BEACH FARMS CO. PLAT NO. 3 PG. 2, PG. 45-54

EDM ENGINEERING & SURVEYING

DRAWN R.R. JUN 1979 LUCERNE LAKES HOMES

DESIGNED S.H. JUN 1979 VILLAGE II THIRD ADDITION

SCALE 1"=50'

2 2

48

0277-304
 28/44/42
 37/191