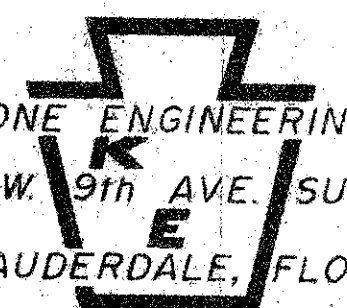
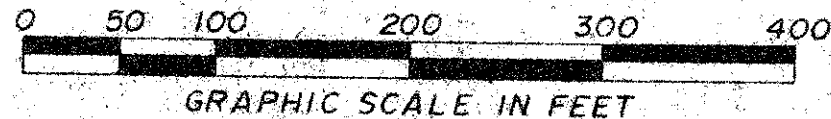


# BOCA CHASE SECTION TWO

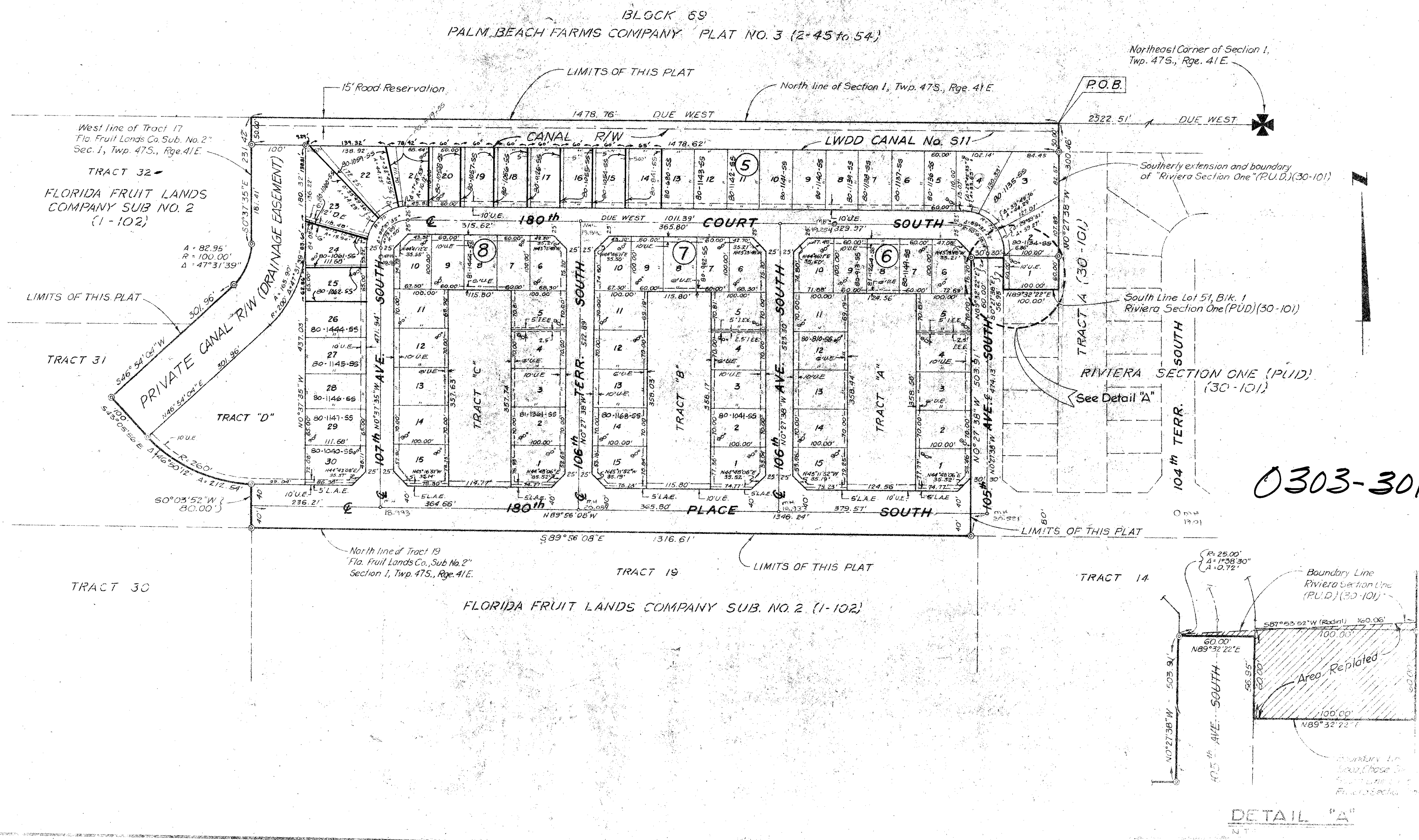
A PORTION OF RIVIERA (P.U.D.)  
 A REPLAT OF PORTIONS OF TRACTS 16, 17, 18, 31 AND 32  
 "FLORIDA FRUIT LANDS CO. SUBDIVISION NO. 2" (1-102) IN SECTION 1, TOWNSHIP 47S., RANGE 41E,  
 AND A REPLAT OF A PORTION OF "RIVIERA SECTION ONE" (PUD) (30-101), PALM BEACH COUNTY, FLORIDA.

**NOTES**

- 1) • Indicates Permanent Control Points.
- 2) © Indicates Permanent Reference Monument.
- 3) D.E. Indicates Drainage Easement
- 4) U.E. Indicates Drainage Easement
- 5) I.E.E. Indicates Ingress and Egress Easements (For Pedestrian use only)
- 6) Bearings shown hereon are based on the North line of Section 1 Twp. 47 South, Range 41 East, having an assumed bearing of Due West as shown on Riviera Section One (P.U.D.) P.B. 30 Pg. 101 P.B.C.R.
- 7) L.A.E. Indicates Limited Access Easement.

PREPARED BY  
  
 KEYSTONE ENGINEERING INC.  
 6301 N.W. 9th AVE. SUITE B  
 FT. LAUDERDALE, FLORIDA  
 ORDER NO. 46114 - E  


37  
 19  
 SHEET 2 OF 2



DRAWING NUMBER  
**57-193**

DRAWING NUMBER

DRAWING NUMBER

DRAWING NUMBER

DETAIL "A"  
 NT