

38-4

VILLAS AT LUCERNE LAKES PLAT NO.1

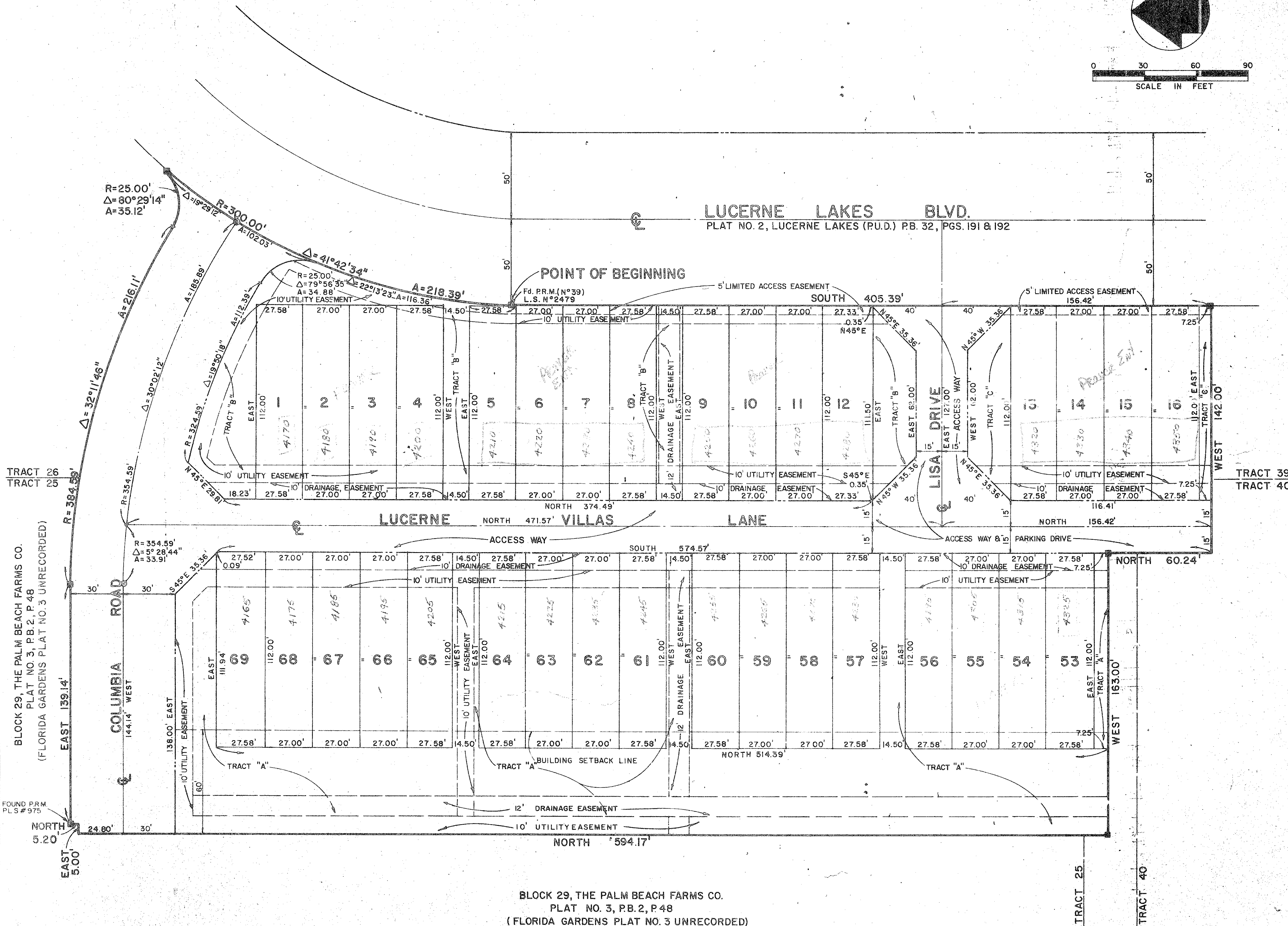
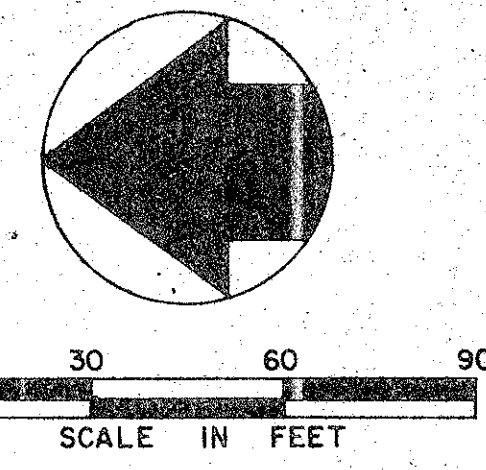
BEING A PORTION OF LUCERNE LAKES P.U.D.

BEING A REPLAT OF A PORTION OF BLOCK 29, PALM BEACH FARMS PLAT NO.3 PALM BEACH COUNTY, FLORIDA AS RECORDED IN PLAT BOOK 2, PAGE 48 PALM BEACH COUNTY PUBLIC RECORDS.

APRIL 1979
SHEET 2 OF 2

4

STATE OF FLORIDA
COUNTY OF PALM BEACH
THIS PLAT WAS FILED FOR
RECORD AT
THIS DAY OF
AD, 1979 AND DULY RECORDED
IN PLAT BOOK ON PAGES
AND
JOHN B. DUNKLE, CLERK
CIRCUIT COURT
BY: DC.



BLOCK 29, THE PALM BEACH FARMS CO.
PLAT NO. 3, PB. 2, P. 48
(FLORIDA GARDENS PLAT NO. 3 UNRECORDED)

0277-303

BLOCK 29, THE PALM BEACH FARMS CO.
PLAT NO. 3, PB. 2, P. 48
(FLORIDA GARDENS PLAT NO. 3 UNRECORDED)

EDM		E D M SURVEYING & MAPPING INC. 2300 PALM BEACH LAKES BOULEVARD SUITE 109 305 684-3770 WEST PALM BEACH, FL 33409		RECORDED	DEAL
DRAWN R.R.	DATE APR. 1979	VILLAS AT LUCERNE LAKES		SHEET 2 OF 2	
CHECKED	SCALE 1" = 30'	PLAT NO. 1			
DESIGNED	78-058				
FIELD BOOK NO.	78-03-058				