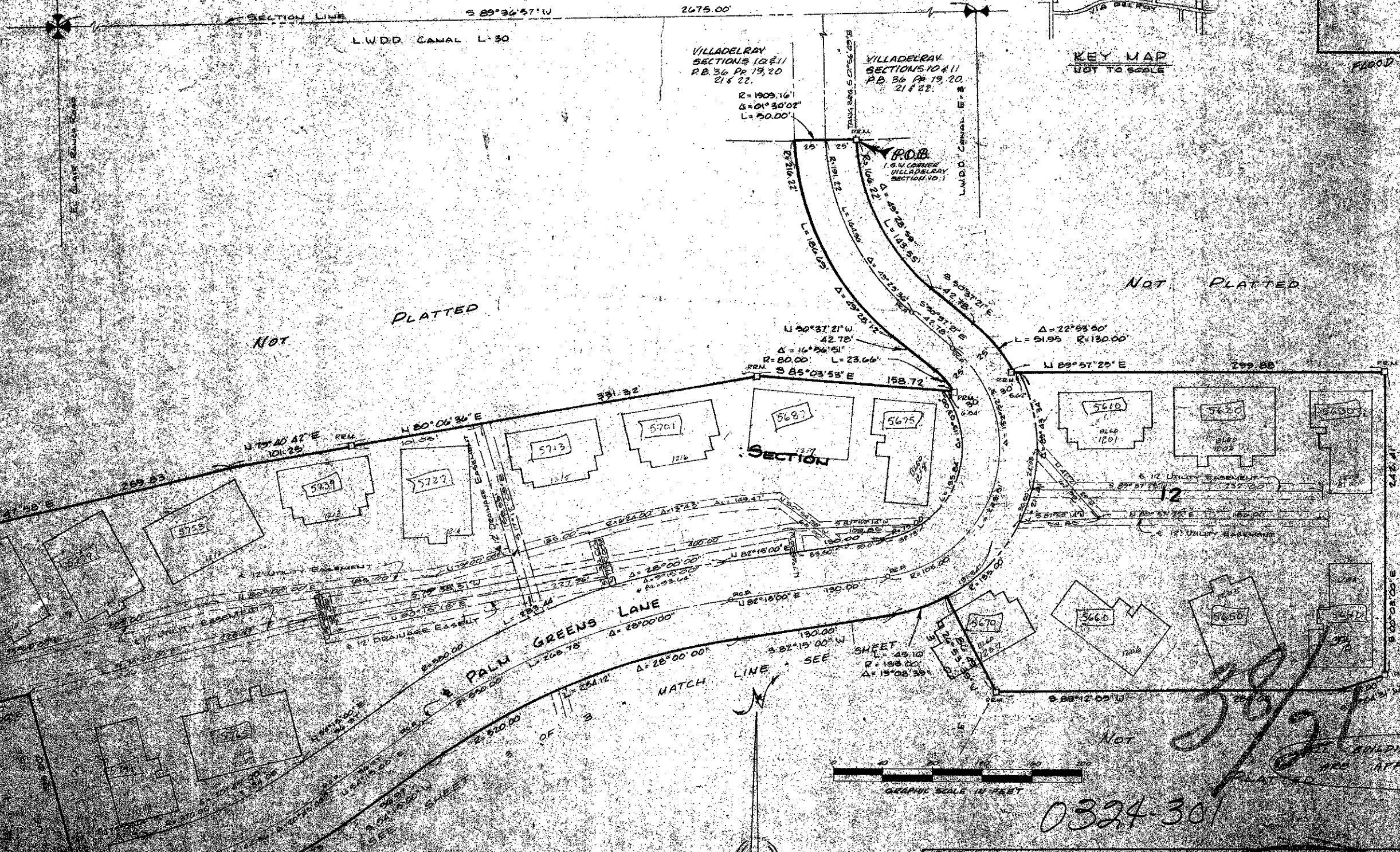
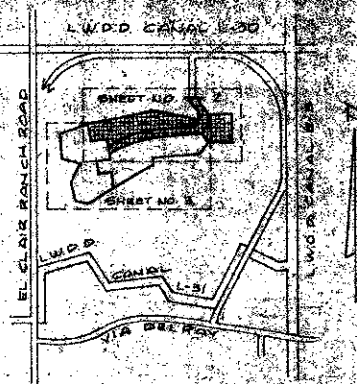


A PLANNED UNIT DEVELOPMENT VILLADELRAY - SECTIONS 12, 13 AND 14 PALM BEACH COUNTY, FLORIDA IN 3 SHEETS - SHEET NO. 2



0324-30

Field Book No.	Pa.	ROBERT E. OWEN & ASSOCIATES, INC. ENGINEERS, PLANNERS, SURVEYORS WEST PALM BEACH, FLORIDA	PLANNED UNIT DEVELOPMENT VILLADELRAY SECTIONS 12, 13 & 14 PALM BEACH COUNTY, FLORIDA	NO. TO US
Design	Drawn			NO. TO US
Checked	Checked			2