

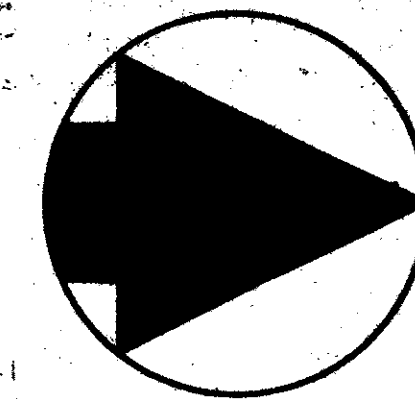
38-44

PLAT OF THE COUNTRYSIDE TOWNHOMES PLAT NO. 2

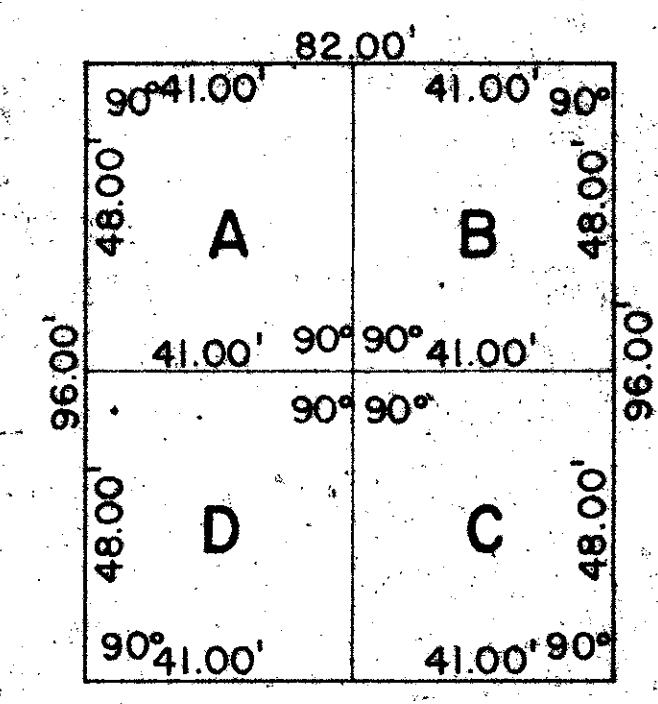
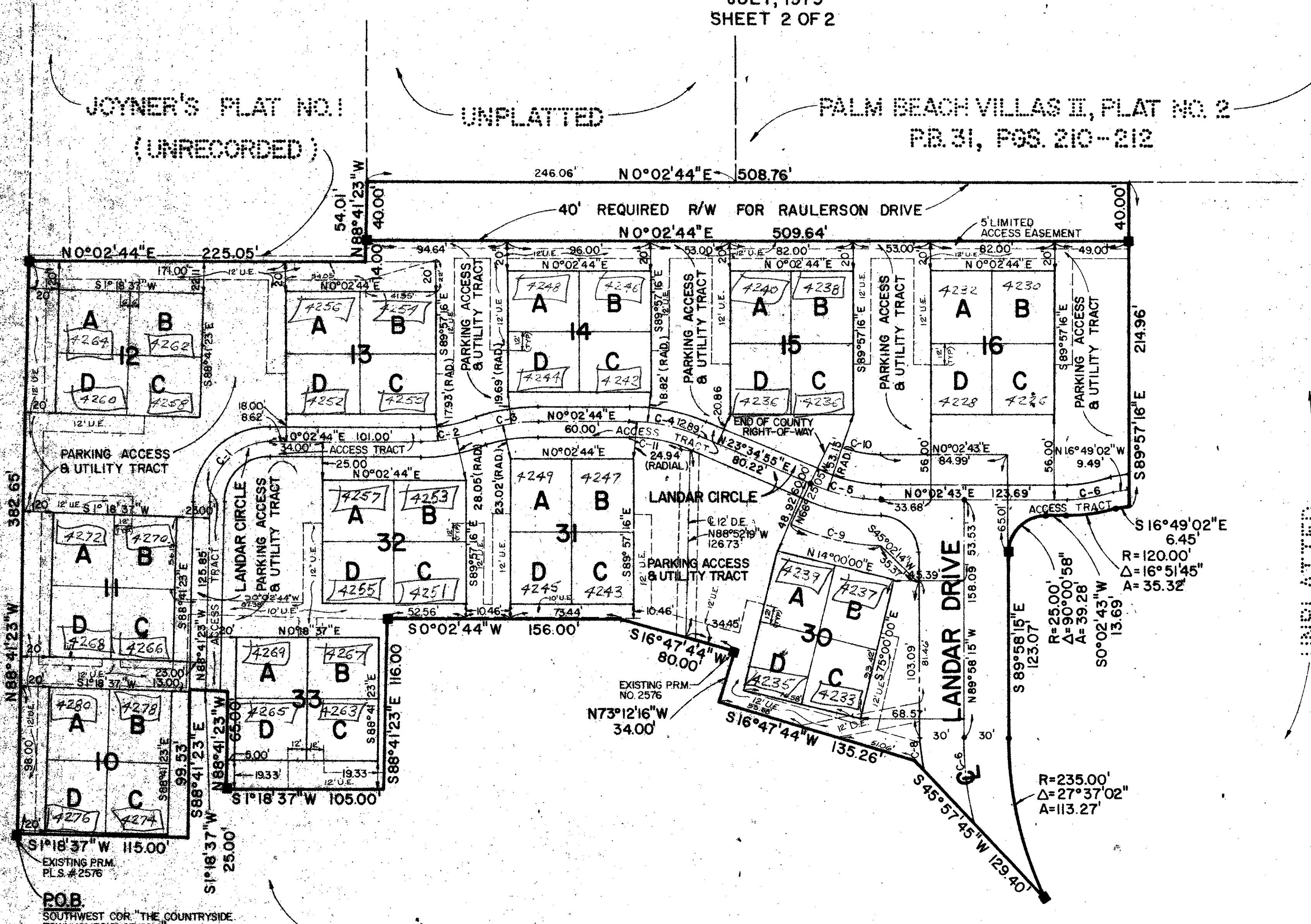
BEING A PORTION OF THE NORTHWEST ONE-QUARTER
OF SECTION 25, TOWNSHIP 44 SOUTH, RANGE 42 EAST
PALM BEACH COUNTY, FLORIDA
JULY, 1979
SHEET 2 OF 2

44

THIS PLAT WAS FILED FOR
RECORD AT
THIS DAY OF
AD, 1979 AND DULY RECORDED
IN PLAT BOOK ON PAGES
AND
JOHN B. DUNKLE, CLERK
CIRCUIT COURT.
BY: _____ DC.



0 50 100 150
SCALE IN FEET
1"=50'



TYPICAL TOWNHOMES LOT DETAIL
SCALE 1"=30'

UNPLATTED

UNPLATTED

THE COUNTRYSIDE TOWNHOMES PLAT NO. 1
PB. 35 PG. 145-148

- SURVEYORS' NOTES:**
1. ALL LOTS ARE 41.00 FEET BY 48.00 FEET, AND ARE RECTANGULAR IN SHAPE.
 2. ALL AREAS INCLUDED WITHIN THE BOUNDARIES OF THIS PLAT, EXCLUDING HOWEVER ALL DESIGNATED LOTS AND LANDAR DRIVE ARE CLASSIFIED AS "PARKING, ACCESS, AND UTILITY TRACTS".

NO.	RADIUS	DELTA	ARC
C-1	40.89'	88°44'08"	63.33'
C-2	110.96'	20°27'19"	39.61'
C-3	110.96'	20°27'19"	39.61'
C-4	120.00'	23°32'12"	49.30'
C-5	120.00'	23°32'12"	49.30'
C-6	110.00'	16°51'45"	32.37'
C-7	265.00'	12°19'56"	57.04'
C-8	295.00'	3°53'07"	20.00'
C-9	150.00'	23°32'12"	61.62'
C-10	90.00'	23°32'12"	36.97'
C-11	110.00'	21°49'30"	41.90'

38/44

0227-003

EDM E D M SURVEYING & MAPPING INC.
2300 PALM BEACH LAKES BOULEVARD
SUITE 100, PALM BEACH, FL 33409
WEST PALM BEACH, FL 33409

DATE: JUNE, 1979
SCALE: 1"=50'
CONTR: W.L.F.
JOB NO: 78-043
PLAT BOOK NO: 78-P-043

THE COUNTRYSIDE
TOWNHOMES
PLAT NO. 2