

38-49

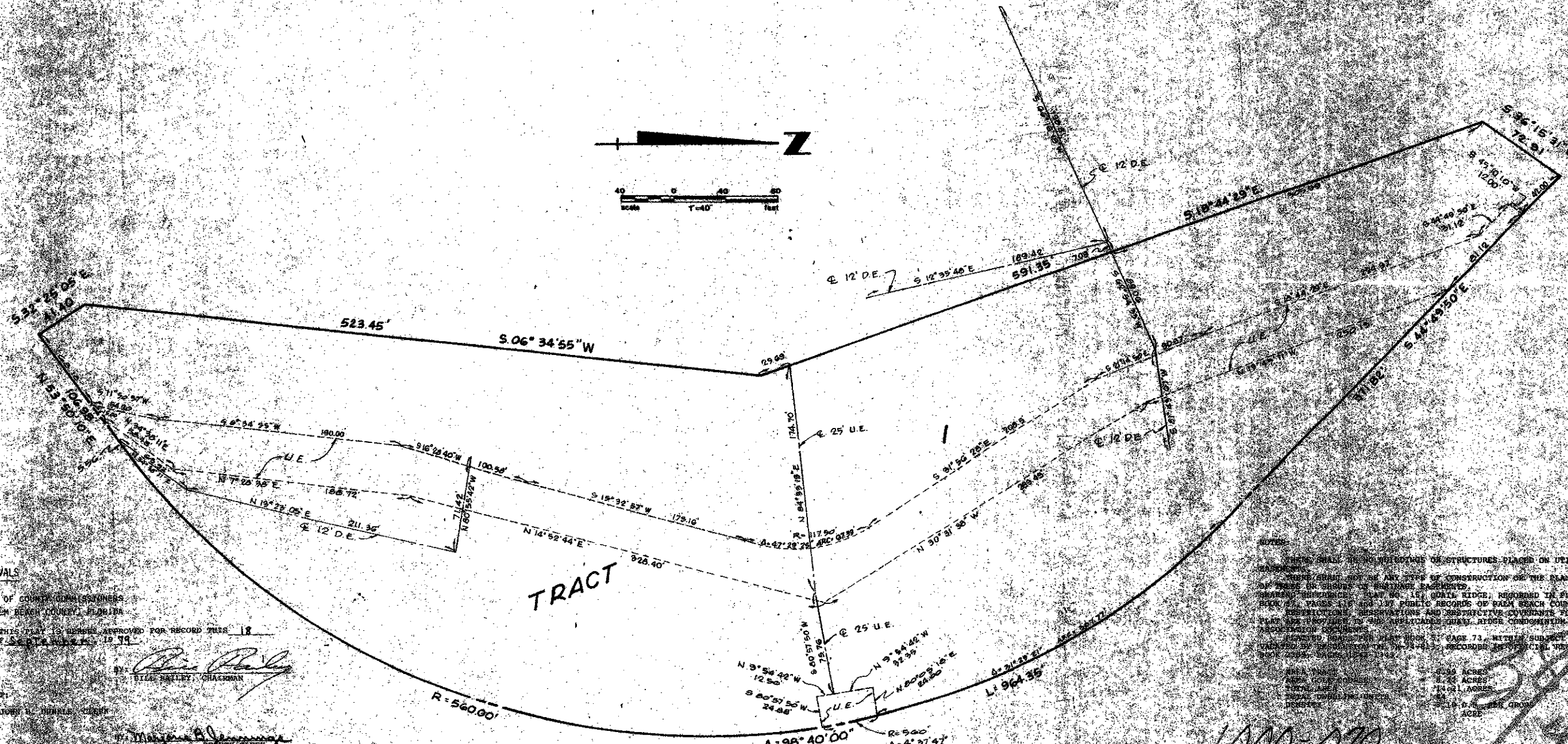
# PLAT NO. 17 QUAIL RIDGE

(A PLANNED UNIT DEVELOPMENT)

IN SECTION 30 TOWNSHIP 45 SOUTH, RANGE 43 EAST  
PALM BEACH COUNTY, FLORIDA, BEING A REPLAT OF  
PORTIONS OF TRACTS 85,86,87,106,107,108,117 AND 118  
PALM BEACH FARMS COMPANY PLAT NO. 8 SEC. 30  
T-45-S, R-43-E PLAT BOOK 5 PAGE 73 AND OTHER LANDS

IN 3 SHEETS SHEET NO. 3

49



### APPROVALS

BOARD OF COUNTY COMMISSIONERS  
OF PALM BEACH COUNTY, FLORIDA

THIS PLAT IS HEREBY APPROVED FOR RECORD THIS 18  
DAY OF SEPTEMBER, 1979

*Billie Bailey*  
BILLIE BAILEY, CHAIRMAN

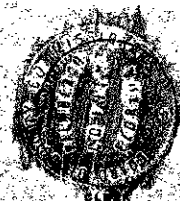
JOHN L. HERRICK, CLERK

*Margaret A. Jennings*  
MARGARET A. JENNINGS, DEPUTY CLERK

COUNTY ENGINEER

THIS PLAT IS HEREBY APPROVED FOR RECORD THIS 18  
DAY OF SEPTEMBER, 1979

*W. D. Walling*  
W. D. WALLING, COUNTY ENGINEER



NOTES:

1. THERE SHALL BE NO STRUCTURES PLACED ON UTILITY EASEMENTS.
2. THERE SHALL NOT BE ANY TYPE OF CONSTRUCTION OR THE PLANNING OF SAME IN SHOWS OF BUSINESS FACILITIES.
3. THERE SHALL BE NO CONSTRUCTION OF ANY TYPE OF CONSTRUCTION IN PLAT NO. 17, QUAIL RIDGE, RECORDED IN PLAT BOOK 5, PAGES 117 AND 118 PUBLIC RECORDS OF PALM BEACH COUNTY, FLORIDA.
4. RESERVATIONS, RESERVATIONS AND RESTRICTIVE COVENANTS FOR THIS PLAT ARE PROVIDED TO THE APPLICABLE QUAIL RIDGE CONDOMINIUM ASSOCIATION DOCUMENTS.
5. PLANNED UNIT DEVELOPMENT PLAT NO. 17, QUAIL RIDGE, IS SUBJECT TO THE RESTRICTIONS AND COVENANTS OF PLAT NO. 8, RECORDED IN PLAT BOOK 5, PAGE 73, PUBLIC RECORDS OF PALM BEACH COUNTY, FLORIDA.

TOTAL AREA	22.99 ACRES
NET AREA	17.25 ACRES
TOTAL DEVELOPABLE AREA	14.01 ACRES
NET DEVELOPABLE AREA	11.00 ACRES
NET DEVELOPABLE AREA	11.00 ACRES

1000-070

49