

38-53

A PLANNED UNIT DEVELOPMENT IN COUNTRY CLUB TRAIL

PLAT OF BENT TREE

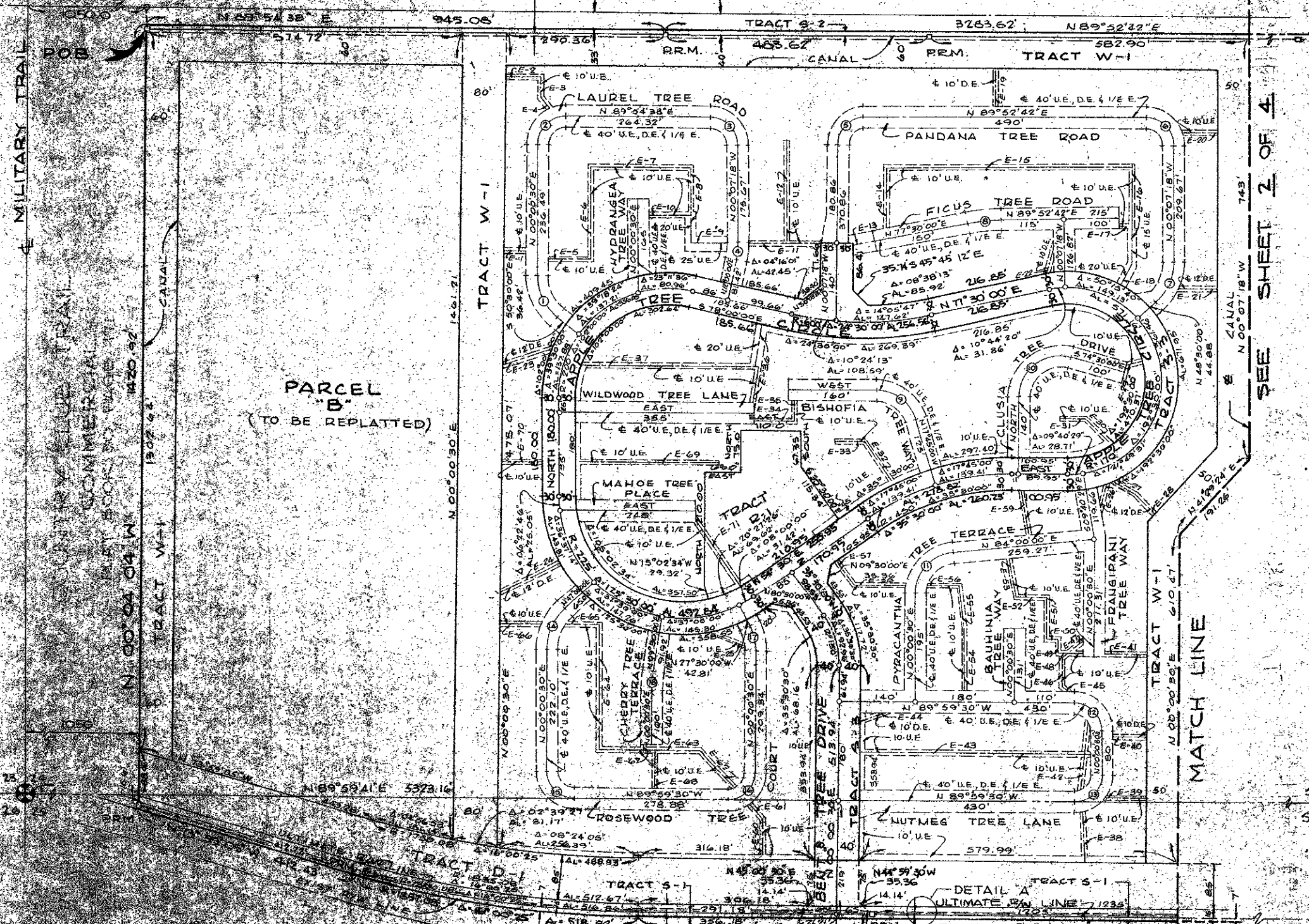
FOUR SHEETS, SHEET NO. THREE

CYPRESS CREEK GOLF CLUB

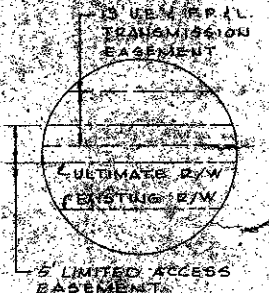
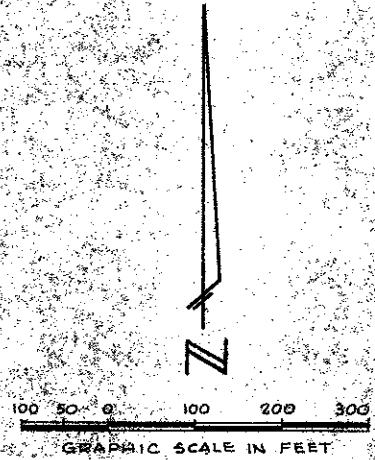
PLAT BOOK 35 PAGE 106

5' LIMITED ACCESS EASEMENT & FRIL TRANSMISSION EASEMENT

53



Flood Zone B



DETAIL 'A'

38-53
226
0206-305

NOTE
 U.E. DENOTES UNIT EASEMENT
 D.E. DENOTES DEDICATED EASEMENT
 T.E. DENOTES TRAIL EASEMENT

SIRENTREE VILLAGES
 PLAT BOOK 35, PAGES 76, 77, 78

LIMETREE COURT
 PLAT BOOK 30, PAGES 52, 53, 54

| | |
|----------------------|--|
| Field Book No. _____ | ROBERT E. OWEN & ASSOCIATES, INC. |
| Design C. DAVIS | ENGINEERS - PLANNERS - SURVEYORS |
| Drawn FERRY GARDNER | WEST PALM BEACH, FLORIDA |
| Checked G. DAVIS | Not to be used for construction until Approved |
| | Approved _____ |

PLAT OF BENT TREE

| |
|------------------|
| Job No. 78-1145 |
| Scale 1" = 100' |
| Date FEB. 1979 |
| Sheet 3 |
| of 4 |
| File No. BF-2290 |