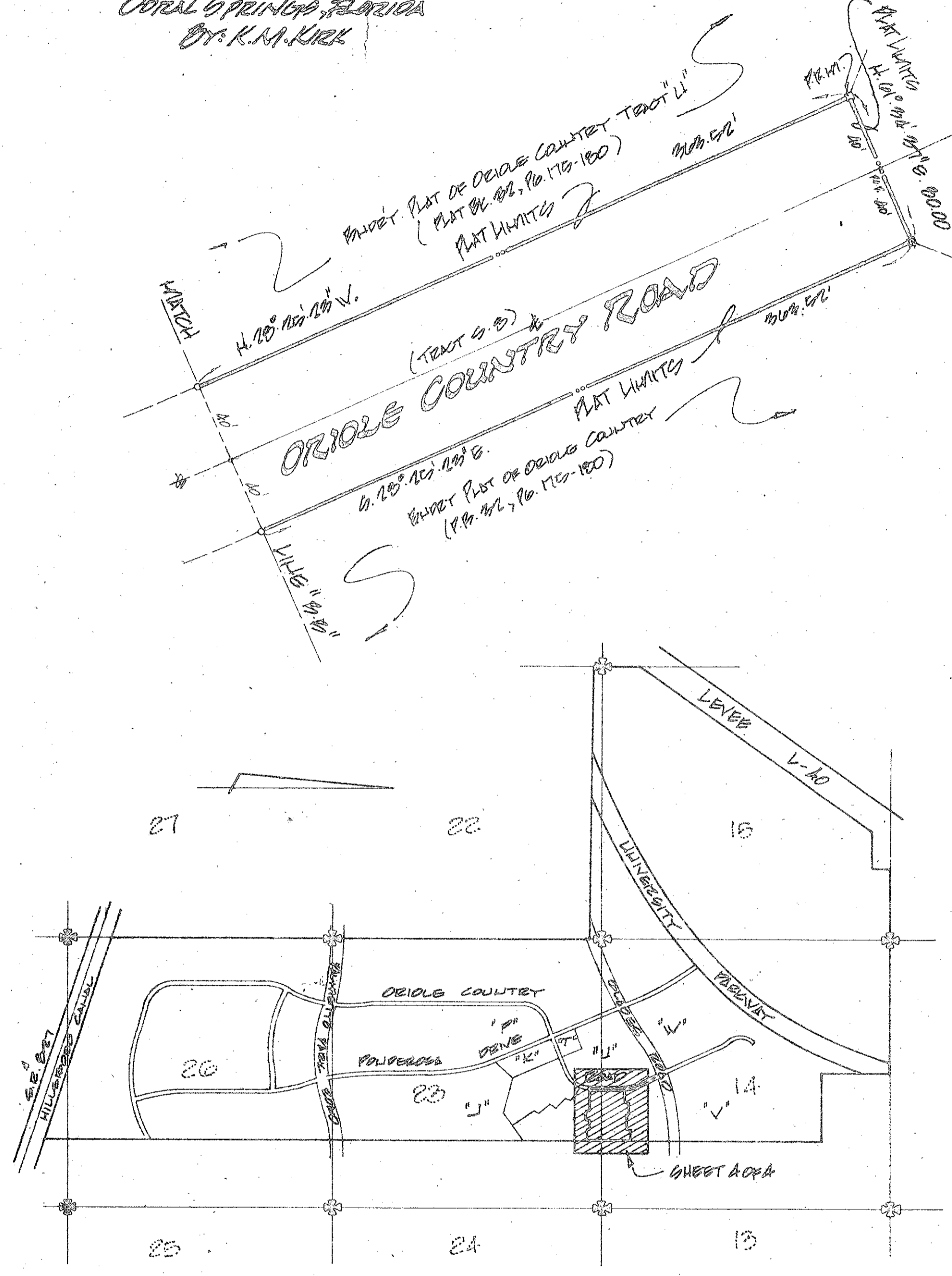
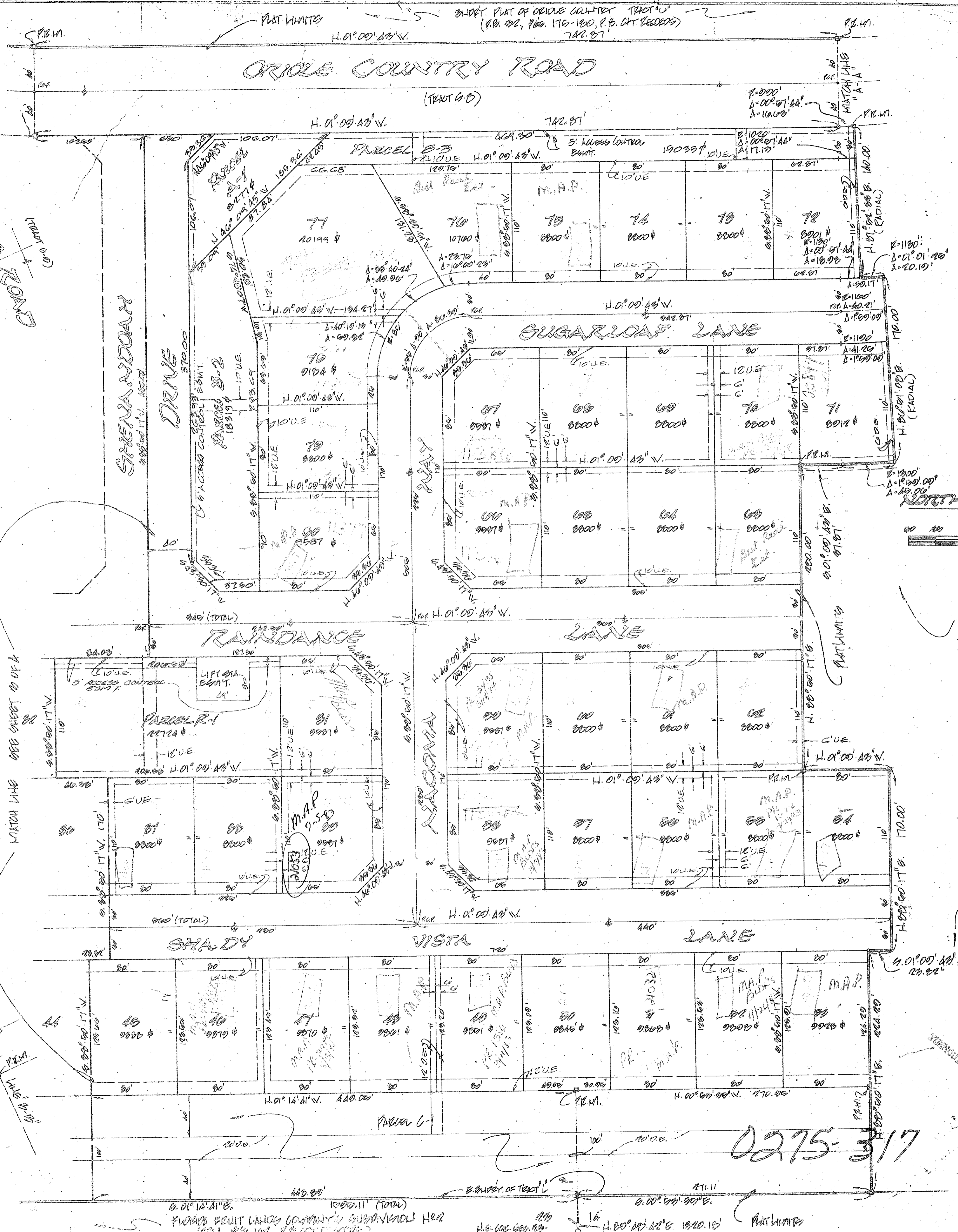
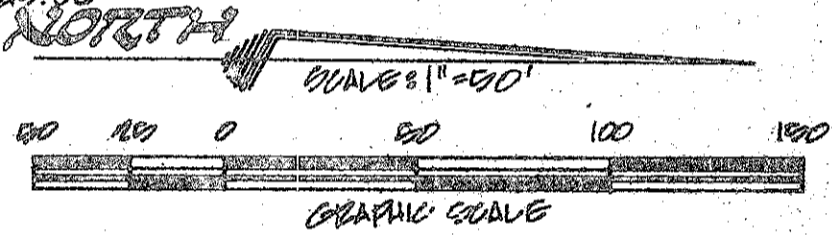
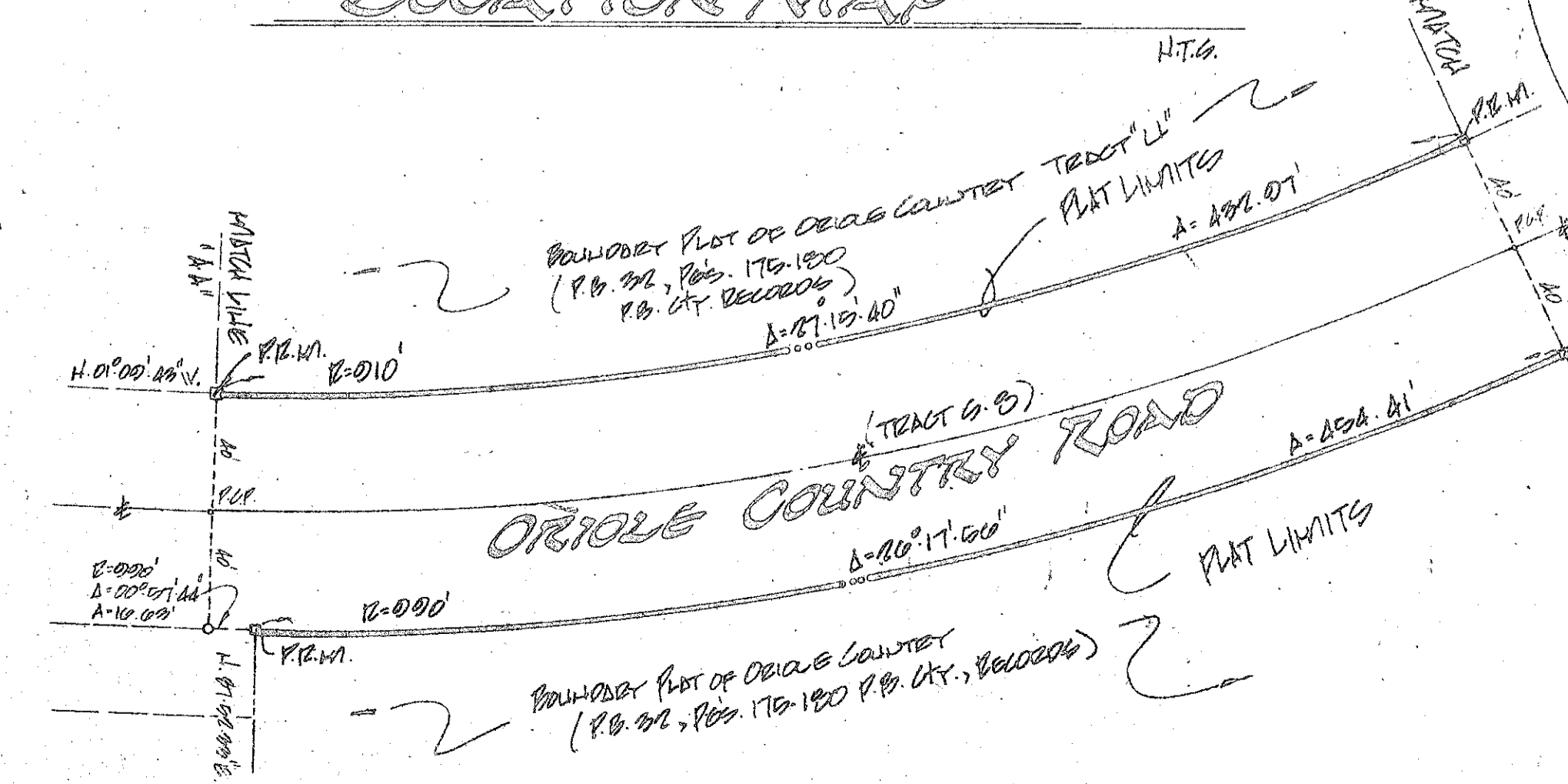


PART OF A PLANNED UNIT DEVELOPMENT  
**"INDIAN HEAD SECTION ONE"**  
 BEING THE SUBDIVISION OF A PORTION OF TRACTS L & S  
 BOUNDARY PART OF ORIOLE COUNTRY  
 PLAT BOOK 32, PAGES 175-180  
 SECTION 14, T.20N, R.10E, RANGE EAST  
 PALM BEACH COUNTY, FLORIDA

This Instrument Prepared By:  
**DRACONE & ASSOCIATES, INC.**  
 ENGINEERS, PLANNERS, SURVEYORS  
 CORAL GABLES, FLORIDA  
 BY: K.M. KIRK



**"LOCATION MAP"**



BOUND. PART OF ORIOLE COUNTRY TRACT L  
 (P.B. 32, Pgs. 175-180 PLAT L.)

38  
97

0275-317