

LINE NO.	BEARING	DISTANCE	AREA	PERIMETER
1	N 88° 16' 32" E	55.09		
2	N 89° 05' 03" E	465.30		
3	S 88° 30' 20" W	311.31		
4	S 89° 05' 03" E	465.30		
5	N 88° 16' 32" E	55.09		
6	N 89° 05' 03" E	465.30		
7	S 88° 30' 20" W	311.31		
8	S 89° 05' 03" E	465.30		
9	N 88° 16' 32" E	55.09		
10	N 89° 05' 03" E	465.30		
11	S 88° 30' 20" W	311.31		
12	S 89° 05' 03" E	465.30		
13	N 88° 16' 32" E	55.09		
14	N 89° 05' 03" E	465.30		
15	S 88° 30' 20" W	311.31		
16	S 89° 05' 03" E	465.30		
17	N 88° 16' 32" E	55.09		
18	N 89° 05' 03" E	465.30		
19	S 88° 30' 20" W	311.31		
20	S 89° 05' 03" E	465.30		
21	N 88° 16' 32" E	55.09		
22	N 89° 05' 03" E	465.30		
23	S 88° 30' 20" W	311.31		
24	S 89° 05' 03" E	465.30		
25	N 88° 16' 32" E	55.09		
26	N 89° 05' 03" E	465.30		
27	S 88° 30' 20" W	311.31		
28	S 89° 05' 03" E	465.30		
29	N 88° 16' 32" E	55.09		
30	N 89° 05' 03" E	465.30		
31	S 88° 30' 20" W	311.31		
32	S 89° 05' 03" E	465.30		
33	N 88° 16' 32" E	55.09		
34	N 89° 05' 03" E	465.30		
35	S 88° 30' 20" W	311.31		
36	S 89° 05' 03" E	465.30		
37	N 88° 16' 32" E	55.09		
38	N 89° 05' 03" E	465.30		
39	S 88° 30' 20" W	311.31		
40	S 89° 05' 03" E	465.30		
41	N 88° 16' 32" E	55.09		
42	N 89° 05' 03" E	465.30		
43	S 88° 30' 20" W	311.31		
44	S 89° 05' 03" E	465.30		
45	N 88° 16' 32" E	55.09		
46	N 89° 05' 03" E	465.30		
47	S 88° 30' 20" W	311.31		
48	S 89° 05' 03" E	465.30		
49	N 88° 16' 32" E	55.09		
50	N 89° 05' 03" E	465.30		
51	S 88° 30' 20" W	311.31		
52	S 89° 05' 03" E	465.30		
53	N 88° 16' 32" E	55.09		
54	N 89° 05' 03" E	465.30		
55	S 88° 30' 20" W	311.31		
56	S 89° 05' 03" E	465.30		
57	N 88° 16' 32" E	55.09		
58	N 89° 05' 03" E	465.30		
59	S 88° 30' 20" W	311.31		
60	S 89° 05' 03" E	465.30		
61	N 88° 16' 32" E	55.09		
62	N 89° 05' 03" E	465.30		
63	S 88° 30' 20" W	311.31		
64	S 89° 05' 03" E	465.30		
65	N 88° 16' 32" E	55.09		
66	N 89° 05' 03" E	465.30		
67	S 88° 30' 20" W	311.31		
68	S 89° 05' 03" E	465.30		
69	N 88° 16' 32" E	55.09		
70	N 89° 05' 03" E	465.30		
71	S 88° 30' 20" W	311.31		
72	S 89° 05' 03" E	465.30		
73	N 88° 16' 32" E	55.09		
74	N 89° 05' 03" E	465.30		
75	S 88° 30' 20" W	311.31		
76	S 89° 05' 03" E	465.30		
77	N 88° 16' 32" E	55.09		
78	N 89° 05' 03" E	465.30		
79	S 88° 30' 20" W	311.31		
80	S 89° 05' 03" E	465.30		
81	N 88° 16' 32" E	55.09		
82	N 89° 05' 03" E	465.30		
83	S 88° 30' 20" W	311.31		
84	S 89° 05' 03" E	465.30		
85	N 88° 16' 32" E	55.09		
86	N 89° 05' 03" E	465.30		
87	S 88° 30' 20" W	311.31		
88	S 89° 05' 03" E	465.30		
89	N 88° 16' 32" E	55.09		
90	N 89° 05' 03" E	465.30		
91	S 88° 30' 20" W	311.31		
92	S 89° 05' 03" E	465.30		
93	N 88° 16' 32" E	55.09		
94	N 89° 05' 03" E	465.30		
95	S 88° 30' 20" W	311.31		
96	S 89° 05' 03" E	465.30		
97	N 88° 16' 32" E	55.09		
98	N 89° 05' 03" E	465.30		
99	S 88° 30' 20" W	311.31		
100	S 89° 05' 03" E	465.30		

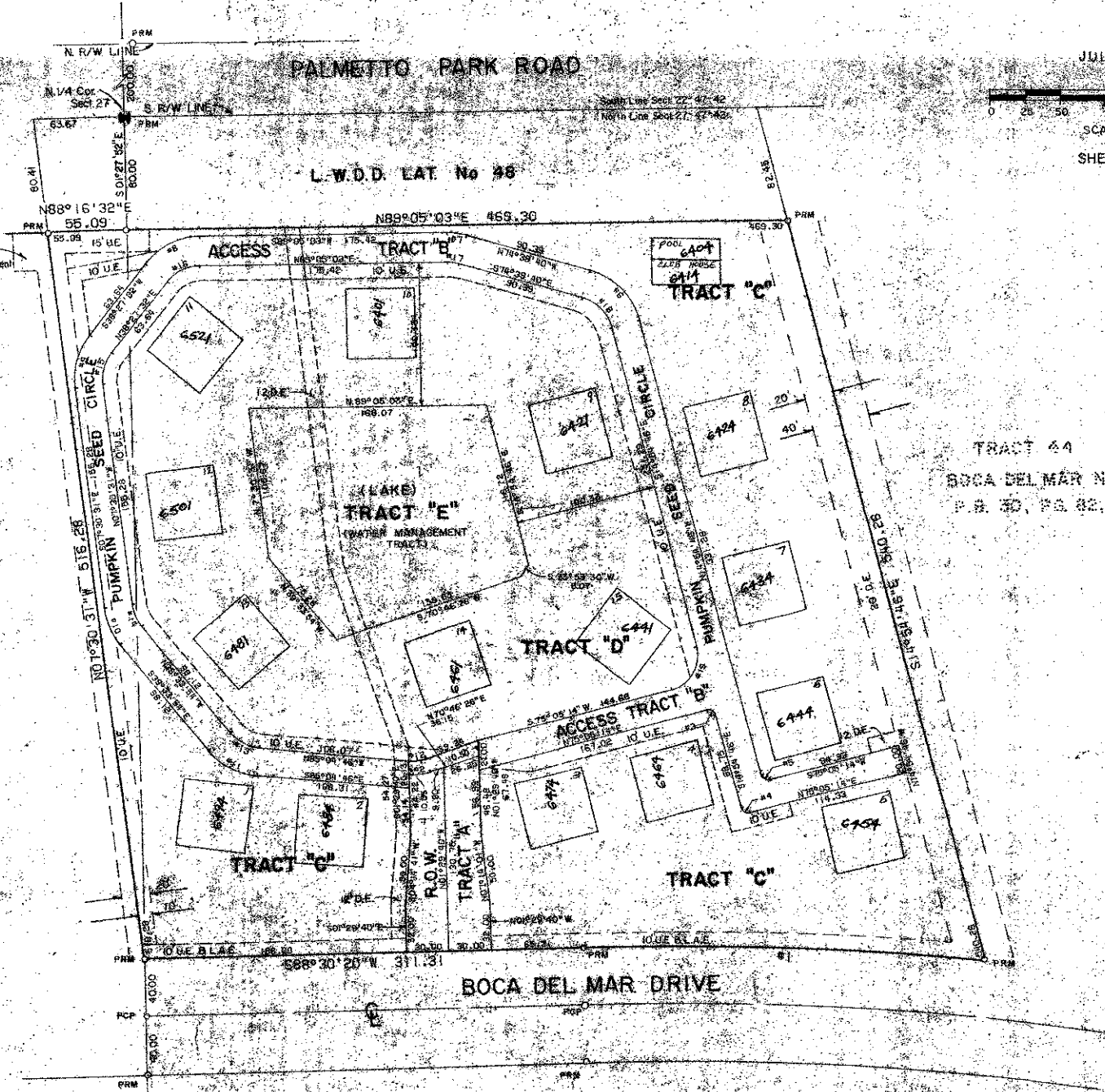
P.U.D.  
**WOODHAVEN EAST INC.**  
 A PLAT OF A PORTION OF SECT. 27, TWP. 47S, RGE. 42 E.  
 AND ALSO BEING A REPLAT OF TRACT 43, A PORTION OF BOCA DEL MAR No. 3, AS RECORDED  
 IN PLAT BOOK 30, PAGE 82 - 84 OF THE PUBLIC RECORDS OF PALM BEACH COUNTY, FLORIDA  
 PALM BEACH COUNTY, FLORIDA  
 JOHN A. GRANT JR., INC. CONSULTING ENGINEERS & LAND SURVEYORS BOCA RATON, FLORIDA

99

JULY 1979  
 SCALE 1" = 50'  
 SHEET 2 OF 2

REPLAT OF TRACT 42  
 BOCA DEL MAR NO 3  
 P.B. 30, PG. 82, 83, 84

AREA OF LOTS (TRACTS "C" & "D")	5.150 ACRES
AREA OF LAKE (TRACT "E")	0.567 ACRES
AREA OF PUBLIC ROAD (TRACT "A")	0.175 ACRES
AREA OF PRIVATE ACCESS ROAD (TRACT "B")	0.691 ACRES
TOTAL AREA THIS PLAT	6.583 ACRES
AREA OF L.W.D. IN TRACT 43	0.953 ACRES
TOTAL AREA TRACT 43 (INCL. L.W.D. R/W)	7.536 ACRES
TOTAL NO. UNITS PROPOSED	60 UNITS
DENSITY PROPOSED (TRACT 43)	7.96 UNITS/AC.
LAND USE	GARDEN APARTMENTS



TRACT 45  
 BOCA DEL MAR NO 3  
 P.B. 30, PG. 82, 83, 84

38/99

0205-343

WOODHAVEN EAST