

OPEN DOOR ESTATES SOUTH OF VIA VERDE - P.U.D.

IN PART OF SECTIONS 22 & 23, TWP. 47 S., RGE. 42 E.

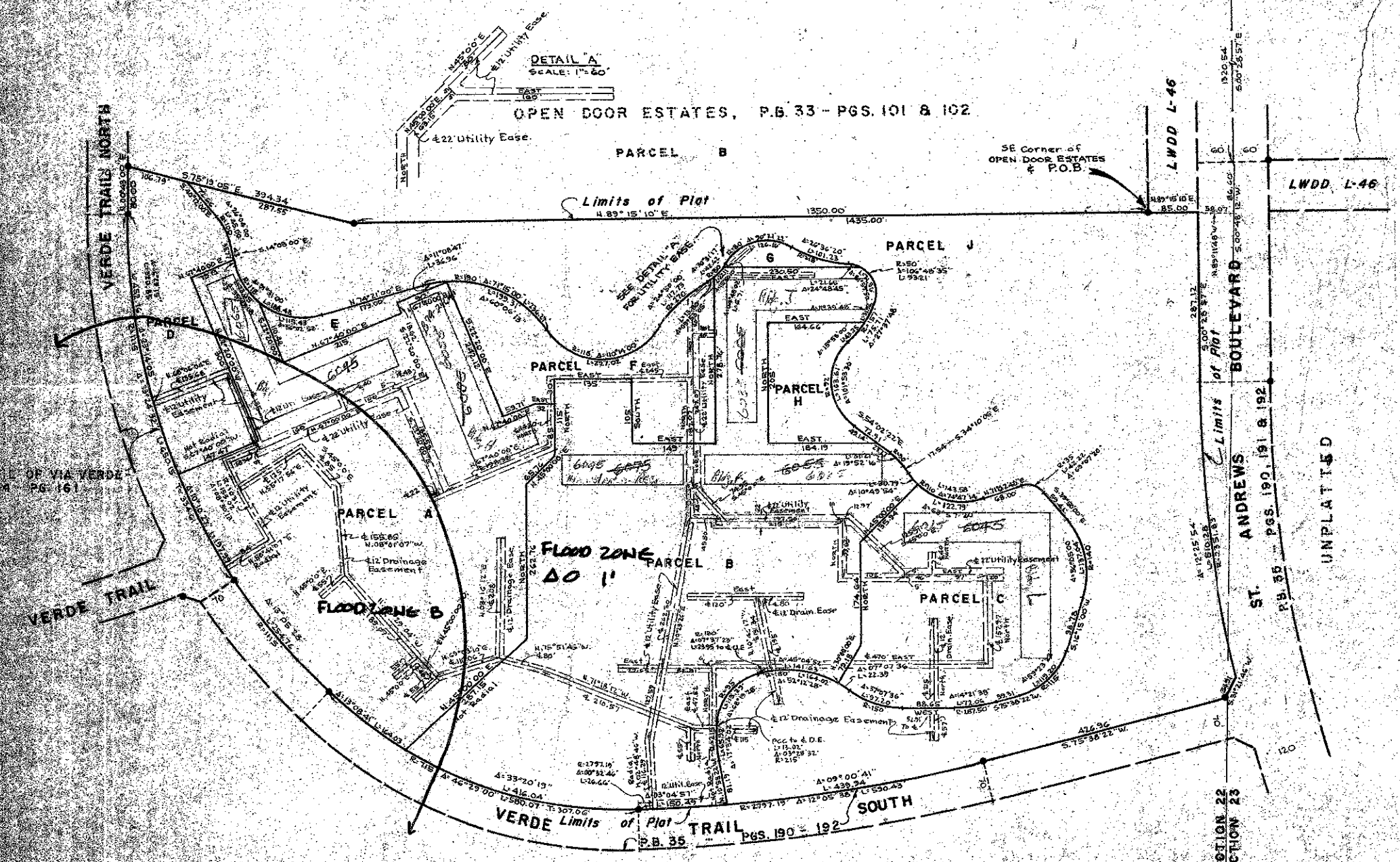
PALM BEACH COUNTY, FLORIDA
IN 2 SHEETS SHEET NO. 2

GEE & JENSON
ENGINEERS-ARCHITECTS-PLANNERS, INC.
WEST PALM BEACH, FLORIDA
MARCH 1979

SCALE IN FEET SCALE: 1"=100'

106

STATE OF FLORIDA
COUNTY OF PALM BEACH
This plat was filed for record
this 20th day of
and was recorded in Plat Book
of page
JOHN R. DUNN, Clerk of the
County Court



NOTES

- All bearings shown hereon are relative to an assumed meridian used throughout Boca West and Via Verde.
- Building Setback Lines shall be as required by Palm Beach County Zoning Regulations.
- There shall be no buildings or other structures placed on Utility Easements.
- There shall be no buildings or any kind of construction or trees or shrubs placed on Drainage Easements.
- denotes Permanent Reference Monument
- Where Utility Easements and Drainage Easements cross, Drainage Easements shall take precedence.
- denotes Corner Lot

UNPLATTED

0323-310

38/106

OPEN Door Estates So. Via Verde P.U.D.