

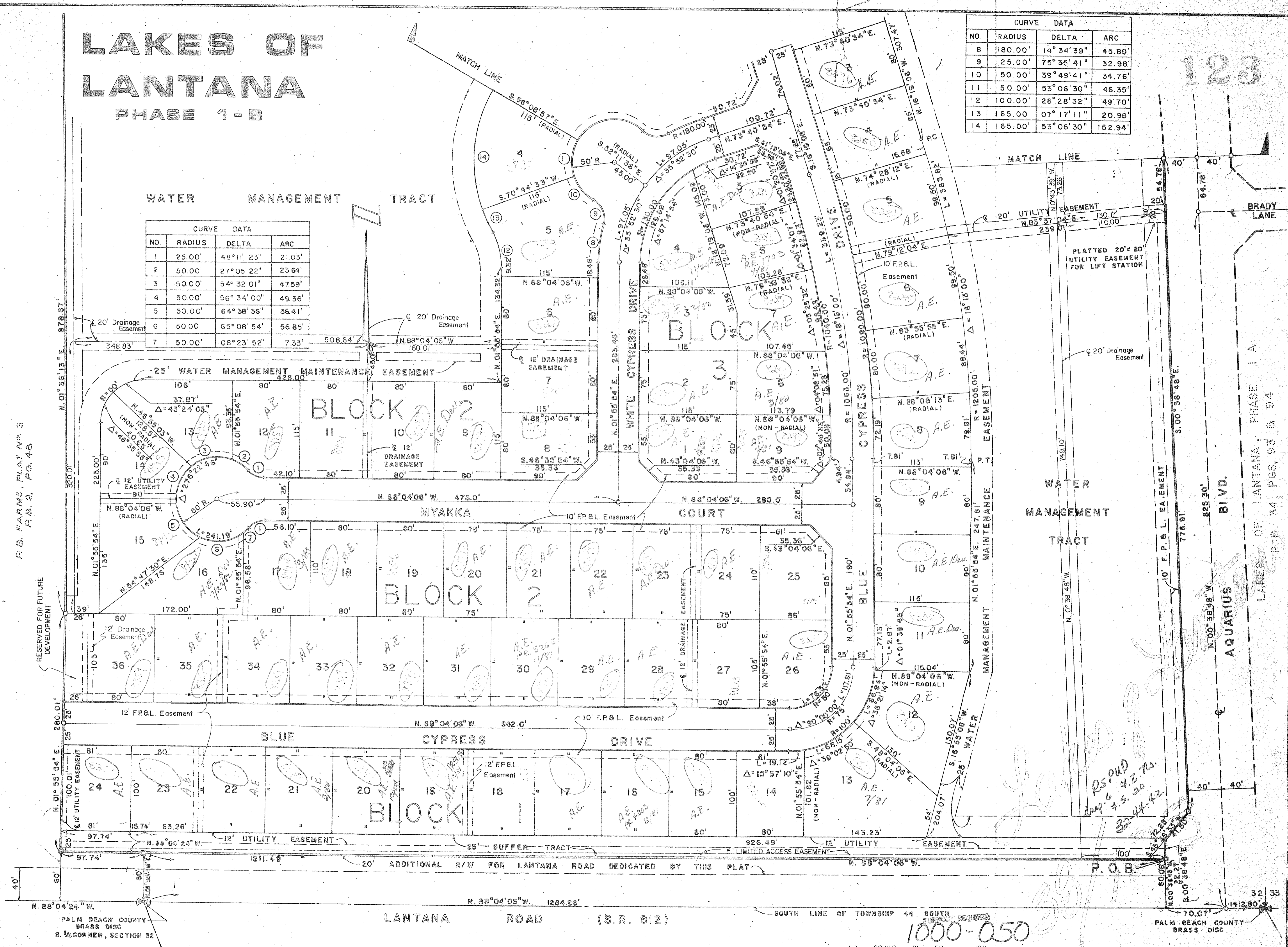
LAKES OF LANTANA

PHASE 1-B

123

CURVE DATA			
NO.	RADIUS	DELTA	ARC
8	180.00'	14° 34' 39"	45.80'
9	25.00'	75° 35' 41"	32.98'
10	50.00'	39° 49' 41"	34.76'
11	50.00'	53° 06' 30"	46.35'
12	100.00'	28° 28' 32"	49.70'
13	165.00'	07° 17' 11"	20.98'
14	165.00'	53° 06' 30"	152.94'

CURVE DATA			
NO.	RADIUS	DELTA	ARC
1	25.00'	48° 11' 23"	21.03'
2	50.00'	27° 05' 22"	23.64'
3	50.00'	54° 32' 01"	47.59'
4	50.00'	56° 34' 00"	49.36'
5	50.00'	64° 38' 36"	56.41'
6	50.00'	65° 08' 54"	56.85'
7	50.00'	08° 23' 52"	7.33'

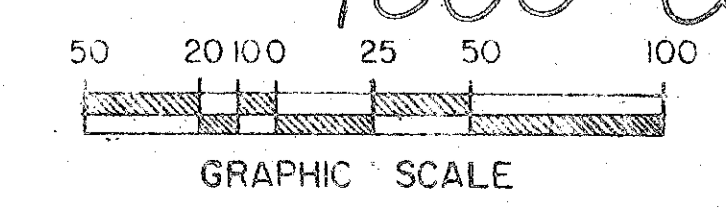


RESERVED FOR FUTURE DEVELOPMENT

PALM BEACH COUNTY
BRASS DISC
S. 1/4 CORNER, SECTION 32

LANTANA ROAD (S.R. 812)

HIATUS TRACT 41



ADAIR & BRADY, INC.
CONSULTING ENGINEERS &
LAND SURVEYORS

FP 1055

SHEET 2 OF 3

JOB NO. 6-3595 E DR. G.M.W. CHRD.

1000-050

RS PUD
Map 6
7.5.20
32-44-42