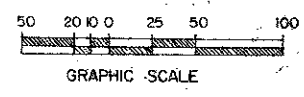


# LAKES OF LANTANA PHASE 1-B

124

**ACREAGE**  
P. B. FARMS, PLAT N<sup>o</sup> 3  
P. B. 2, PG. 43.

SUB DATA	
TOTAL AREA OF PHASE 1B	43.638 Ac.
LESS "RESERVED FOR FUTURE DEVELOPMENT"	0.092 Ac.
NET TOTAL AREA OF PHASE 1B	43.546 Ac.
TOTAL LOT AREA	14.378 Ac.
TOTAL ROAD R/W AREA	4.435 Ac.
TRACT 4	2.252 Ac.
BUFFER AREA	0.751 Ac.
EAST WATER MANAGEMENT TRACT AREA	8.457 Ac.
NORTH WATER MANAGEMENT TRACT AREA	13.301 Ac.
TOTAL WATER MANAGEMENT TRACT AREA	21.759 Ac.
RESIDENTIAL OPEN SPACE (65% OF LOT AREA)	9.345 Ac.
TOTAL BUFFER & WATER MANAGEMENT TRACT AREA	22.510 Ac.
TOTAL OPEN SPACE AREA	31.855 Ac. (EQUAL 73% OF NET AREA)
TOTAL NUMBER OF LOTS	69
DENSITY	1.58 UNITS/ACRE



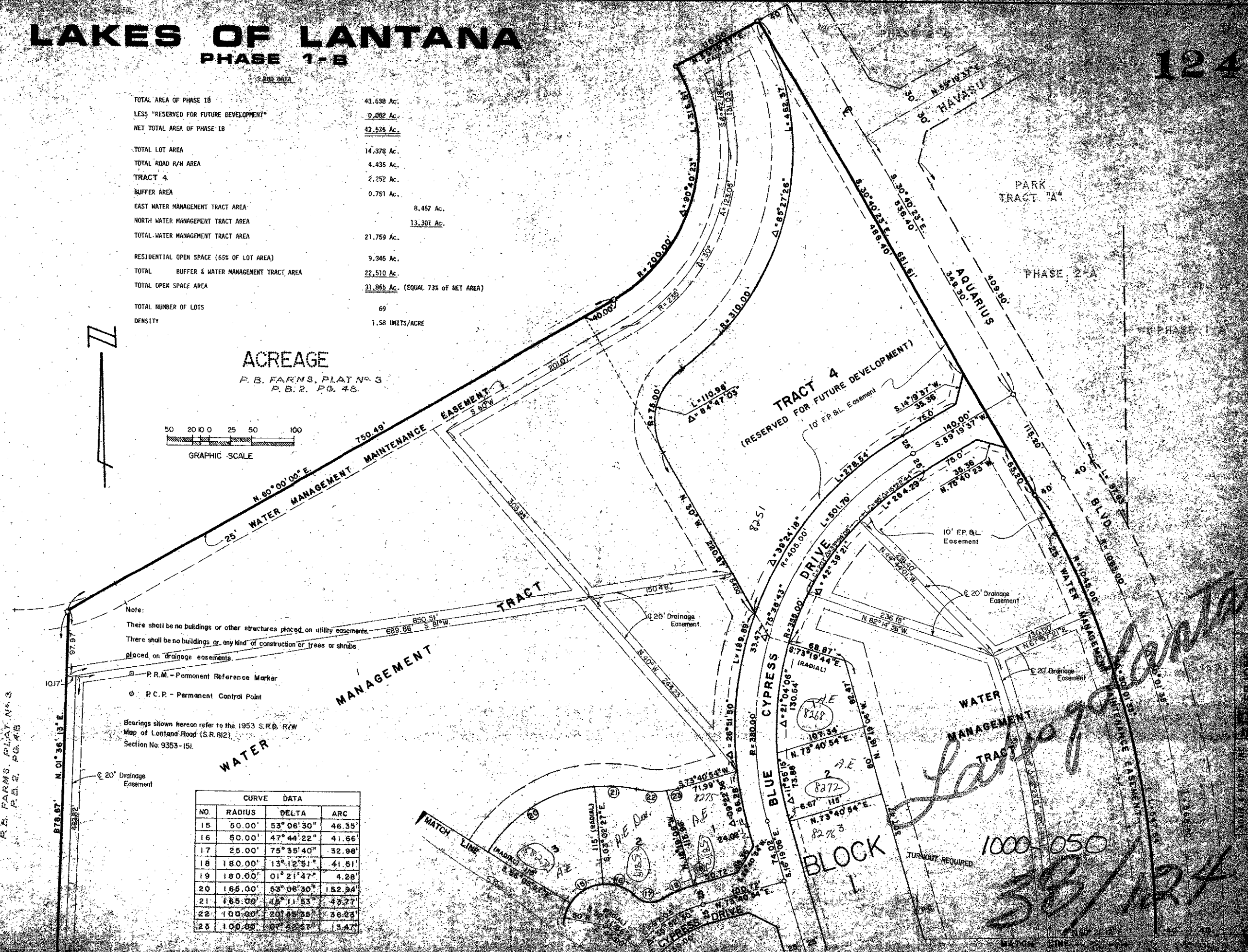
Note:  
There shall be no buildings or other structures placed on utility easements.  
There shall be no buildings or any kind of construction or trees or shrubs placed on drainage easements.

□ P.R.M. - Permanent Reference Marker  
○ P.C.P. - Permanent Control Point

Bearings shown hereon refer to the 1953 S.R.D. R/W Map of Lantana Road (S.R. 812) Section No. 9353-151.

**CURVE DATA**

NO.	RADIUS	DELTA	ARC
15	50.00'	53° 06' 30"	46.35'
16	50.00'	47° 44' 22"	41.66'
17	25.00'	75° 35' 40"	32.98'
18	180.00'	13° 12' 51"	41.51'
19	180.00'	01° 21' 47"	4.28'
20	165.00'	53° 06' 30"	152.94'
21	185.00'	45° 11' 53"	45.77'
22	100.00'	20° 45' 25"	36.23'
23	100.00'	07° 42' 57"	13.47'



P. B. FARMS, PLAT N<sup>o</sup> 3  
P. B. 2, PG. 43